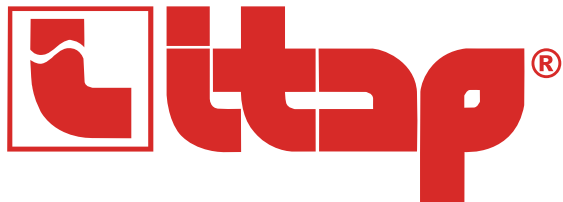


12 Valves

Itap® Brass Ball Valves, Cimberio Valves, Vale® Brass Valves, Norgren and Omal Process Valves, Sirai Solenoid Valves, MHA Zentgraf High Pressure Valves, Ham-Let HP Valves, Wade and Nabic Safety Valves







Brass Ball Valves

EU Approved for Gas to EN 331 (MOP 5)

London® Series Standard Flow

 **Working Temperature**
-20°C to +60°C
(Class T2 under EN 331)

 **Working Pressure:**
72.5 psi
(5 bar)

London® Tee Handle

Standard Flow Ball Valve
Female x Female



- EU approved for gas to EN 331
- Nickel plated forged brass body with aluminium tee handle
- Female Threads: ISO 7/1 Rp parallel (equivalent to DIN EN 10226-1 and BS 21)

PGC: 117	BSPP	Price
BV068-1/4	1/4	£4.69
BV068-3/8	3/8	£4.95
BV068-1/2	1/2	£7.11
BV068-3/4	3/4	£9.86
BV068-1	1	£15.18

London® Tee Handle

Standard Flow Ball Valve
Male x Female



- EU approved for gas to EN 331
- Nickel plated forged brass body with aluminium tee handle
- Female Threads: ISO 7/1 Rp parallel (equivalent to DIN EN 10226-1 and BS 21)
- Male Threads: ISO 7/1 R taper (equivalent to DIN EN 10226-1 and BS 21)

PGC: 117	BSP	Price
BV069-1/4	1/4	£4.97
BV069-3/8	3/8	£5.41
BV069-1/2	1/2	£7.50
BV069-3/4	3/4	£10.34
BV069-1	1	£15.97

London® Lever Handle

Standard Flow Ball Valve
Female x Female



- EU approved for gas to EN 331
- Nickel plated forged brass body with steel lever handle
- Female Threads to ISO 228 (equivalent to DIN 259 and BS 2779)

PGC: 117	BSPP	Price
BV066-1/4	1/4	£4.72
BV066-3/8	3/8	£5.00
BV066-1/2	1/2	£7.13
BV066-3/4	3/4	£9.99
BV066-1	1	£15.30
BV066-11/4	1 1/4	£26.71
BV066-11/2	1 1/2	£41.00
BV066-2	2	£58.22

London® Lever Handle

Standard Flow Ball Valve
Male x Female

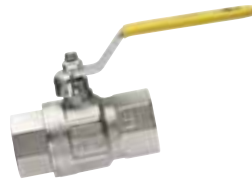


- EU approved for gas to EN 331
- Nickel plated forged brass body with steel lever handle
- Female Threads: ISO 7/1 Rp parallel (equivalent to DIN EN 10226-1 and BS 21)
- Male Threads: ISO 7/1 R taper (equivalent to DIN EN 10226-1 and BS 21)

PGC: 117	BSP	Price
BV067-1/4	1/4	£5.02
BV067-3/8	3/8	£5.48
BV067-1/2	1/2	£7.51
BV067-3/4	3/4	£10.48
BV067-1	1	£16.11
BV067-11/4	1 1/4	£28.12
BV067-11/2	1 1/2	£42.22
BV067-2	2	£59.52

London® Flat Handle

Standard Flow Ball Valve
Female x Female



- EU approved for gas to EN 331
- Nickel plated forged brass body with flat lever handle in lined steel
- Female Threads: ISO 7/1 Rp parallel (equivalent to DIN EN 10226-1 and BS 21)

PGC: 117	BSPP	Price
BV266-1/4	1/4	£5.37
BV266-3/8	3/8	£5.63
BV266-1/2	1/2	£7.69
BV266-3/4	3/4	£10.40
BV266-1	1	£15.98
BV266-11/4	1 1/4	£27.99
BV266-11/2	1 1/2	£42.91
BV266-2	2	£60.79

London® Flat Handle

Standard Flow Ball Valve
Male x Female



- EU approved for gas to EN 331
- Nickel plated forged brass body with flat lever handle in lined steel
- Female Threads: ISO 7/1 Rp parallel (equivalent to DIN EN 10226-1 and BS 21)
- Male Threads: ISO 7/1 R taper (equivalent to DIN EN 10226-1 and BS 21)

PGC: 117	BSP	Price
BV267-1/4	1/4	£5.73
BV267-3/8	3/8	£6.07
BV267-1/2	1/2	£8.08
BV267-3/4	3/4	£10.89
BV267-1	1	£16.81
BV267-11/4	1 1/4	£29.49
BV267-11/2	1 1/2	£44.20
BV267-2	2	£62.17



Approved Full Bore & Angle Brass Ball Valves

Berlin® Series Full Flow

Working Temperature
-20°C to +60°C
(Class T2 under EN 331)

Working Pressure:
72.5 psi
(5 bar)

Berlin® Lever Handle

Full Flow Ball Valve
Female x Female



British Gas

- British Gas approved
- Nickel plated forged brass body with zinc plated steel lever handle
- Manufactured according to EN 331 (Class T2)
- Female Threads to ISO 7/1 Rp parallel (equivalent to DIN EN 10226-1 and BS EN 10226-1 (formerly BS 21))

PGC: 117	BSPP	Price
BV070-1/2	1/2	£8.94
BV070-3/4	3/4	£14.21
BV070-1	1	£20.64
BV070-11/4	1 1/4	£32.56
BV070-11/2	1 1/2	£46.03
BV070-2	2	£68.28

Berlin® Lever Handle

Full Flow Ball Valve
Male x Female



British Gas

- British Gas approved
- Nickel plated forged brass body with zinc plated steel lever handle
- Manufactured according to EN 331 (Class T2)
- Male Threads to ISO 7/1 Rp parallel (equivalent to DIN EN 10226-1 and BS EN 10226-1 (formerly BS 21))
- Female Threads to ISO 7/1 Rp parallel (equivalent to DIN EN 10226-1 and BS EN 10226-1 (formerly BS 21))

PGC: 117	BSP	Price
BV071-1/2	1/2	£8.61
BV071-3/4	3/4	£13.14
BV071-1	1	£18.96
BV071-11/4	1 1/4	£29.51
BV071-11/2	1 1/2	£42.31
BV071-2	2	£59.99

Berlin® Tee Handle

Full Flow Ball Valve
Female x Female



British Gas

- British Gas approved
- Nickel plated forged brass body with zinc plated steel lever handle
- Manufactured according to EN 331 (Class T2)
- Female Threads: Rp parallel to ISO 7/1 (equivalent to DIN EN 10226-1 and BS EN 10226-1 (formerly BS 21))

PGC: 117	BSPP	Price
BV072-1/2	1/2	£8.93
BV072-3/4	3/4	£14.09
BV072-1	1	£20.44

Berlin® Tee Handle

Full Flow Ball Valve
Male x Female



British Gas

- British Gas approved
- Nickel plated forged brass body with zinc plated steel lever handle
- Manufactured according to EN 331 (Class T2)
- Male Threads to ISO 7/1 Rp parallel (equivalent to DIN EN 10226-1 and BS EN 10226-1 (formerly BS 21))
- Female Threads to ISO 7/1 Rp parallel (equivalent to DIN EN 10226-1 and BS EN 10226-1 (formerly BS 21))

PGC: 117	BSP	Price
BV073-1/2	1/2	£8.56
BV073-3/4	3/4	£12.91
BV073-1	1	£18.71

Gas Angle

Angle Valve

Male x Female



British Gas

- British Gas approved
- Nickel plated forged brass body with aluminium tee handle
- Manufactured according to EN 331 (Class T2)
- Male BSPT threads to ISO 7/1 R Taper (equivalent to DIN EN 10226-1 and BS EN 10226-1 (formerly BS 21))

PGC: 117	BSP	Price
BV060-1/2	1/2	£8.76

Angle Valve

Male x Female
Revolving Nut




British Gas

- British Gas approved
- Nickel plated forged brass body with aluminium tee handle
- Revolving female nut
- Manufactured according to EN 331 (Class T2)
- Male Thread to ISO 7/1 R Taper (equivalent to DIN EN 10226-1 and BS EN 10226-1 (formerly BS 21))
- Female Thread to ISO 228 (equivalent to DIN 259 and e BS 2779)

PGC: 117	BSP	Price
BV062-1/2	1/2	£10.48

Brass Ball Valves

Vienna® Series Standard Flow

 **Working Temperature**
-20°C to +150°C
in the absence of steam

Vienna® Tee Handle

Standard Flow Ball Valve
Female x Female



- Suitable for domestic water services, heating and air-conditioning plants and compressed air systems
- Nickel-plated forged brass body with aluminium tee handle
- Female threads to ISO 228 (equivalent to DIN 259 and BS 2779)

PGC: 117	BSPP	Working Pressure (bar)	Price
BV118-1/4	1/4	50	£4.64
BV118-3/8	3/8	50	£4.72
BV118-1/2	1/2	30	£5.12
BV118-3/4	3/4	30	£7.77
BV118-1	1	30	£11.38

Vienna® Tee Handle

Standard Flow Ball Valve
Male x Female



- Suitable for domestic water services, heating and air-conditioning plants and compressed air systems
- Nickel-plated forged brass body with aluminium tee handle
- Male and female threads to ISO 228 (equivalent to DIN 259 and BS 2779)

PGC: 117	BSP	Working Pressure (bar)	Price
BV119-1/4	1/4	50	£5.12
BV119-3/8	3/8	50	£5.34
BV119-1/2	1/2	30	£5.92
BV119-3/4	3/4	30	£8.72
BV119-1	1	30	£12.96

Vienna® Lever Handle

Standard Flow Ball Valve
Female x Female



- Suitable for domestic water services, heating and air-conditioning plants and compressed air systems
- Nickel-plated forged brass body with steel lever handle
- Female threads to ISO 228 (equivalent to DIN 259 and BS 2779)

PGC: 117	BSPP	Working Pressure (bar)	Price
BV116-1/4	1/4	50	£4.75
BV116-3/8	3/8	50	£4.80
BV116-1/2	1/2	30	£5.17
BV116-3/4	3/4	30	£7.91
BV116-1	1	30	£11.51
BV116-11/4	1 1/4	25	£19.50
BV116-11/2	1 1/2	25	£27.45
BV116-2	2	25	£45.58

Vienna® Lever Handle

Standard Flow Ball Valve
Male x Female



- Suitable for domestic water services, heating and air-conditioning plants and compressed air systems
- Nickel-plated forged brass body with steel lever handle
- Male/female threads to ISO 228 (equivalent to DIN 259 and BS 2779)

PGC: 117	BSP	Working Pressure (bar)	Price
BV117-1/4	1/4	50	£5.89
BV117-3/8	3/8	50	£5.43
BV117-1/2	1/2	30	£5.98
BV117-3/4	3/4	30	£8.89
BV117-1	1	30	£13.09
BV117-11/4	1 1/4	25	£22.00
BV117-11/2	1 1/2	25	£30.52
BV117-2	2	25	£50.52

Vienna® Flat Handle

Standard Flow Ball Valve
Female x Female



- Suitable for domestic water services, heating and air-conditioning plants and compressed air systems
- Nickel-plated forged brass body with steel flat handle
- Female threads to ISO 228 (equivalent to DIN 259 and BS 2779)

PGC: 117	BSPP	Working Pressure (bar)	Price
BV216-1/4	1/4	50	£5.06
BV216-3/8	3/8	50	£5.13
BV216-1/2	1/2	30	£5.48
BV216-3/4	3/4	30	£8.01
BV216-1	1	30	£11.55
BV216-11/4	1 1/4	25	£19.72
BV216-11/2	1 1/2	25	£27.69
BV216-2	2	25	£45.83

Vienna® Flat Handle

Standard Flow Ball Valve
Male x Female



- Suitable for domestic water services, heating and air-conditioning plants and compressed air systems
- Nickel-plated forged brass body with steel flat handle
- Male and female threads to ISO 228 (equivalent to DIN 259 and BS 2779)

PGC: 117	BSP	Working Pressure (bar)	Price
BV217-1/4	1/4	50	£5.52
BV217-3/8	3/8	50	£5.74
BV217-1/2	1/2	30	£6.21
BV217-3/4	3/4	30	£8.94
BV217-1	1	30	£12.81
BV217-11/4	1 1/4	25	£21.86
BV217-11/2	1 1/2	25	£30.46
BV217-2	2	25	£49.45



Standard Series Full Flow

Lever Handle

Full Flow Ball Valve
Male x Male



Working Temperature
-20°C to +110°C
in the absence of steam



- Suitable for domestic water services, heating and air-conditioning plants and compressed air systems
- Nickel-plated forged brass body with aluminium lever handle
- Female threads to ISO 228 (equivalent to DIN 228 and BS 228)

PGC: 117	BSPT	Working Pressure (bar)	Price
BV099-3/8	3/8	20	£6.38
BV099-1/2	1/2	20	£6.92
BV099-3/4	3/4	20	£9.04
BV099-1	1	20	£13.77
BV099-1 1/4	1 1/4	16	£21.41
BV099-1 1/2	1 1/2	16	£35.18
BV099-2	2	16	£52.49



Ideal® Series Full Flow

Ideal® Lever Handle

Full Flow Ball Valve
Female x Female



Working Temperature
-20°C to +150°C
in the absence of steam



- Suitable for domestic water services, heating and air-conditioning plants and compressed air systems
- Nickel-plated forged brass body with steel lever handle
- Female threads to ISO 228 (equivalent to DIN 259 and BS 2779)

PGC: 117	BSPP	Working Pressure (bar)	Price
BV090-1/4	1/4	50	£4.75
BV090-3/8	3/8	50	£4.80
BV090-1/2	1/2	50	£6.05
BV090-3/4	3/4	50	£8.95
BV090-1	1	40	£13.84
BV090-1 1/4	1 1/4	30	£22.23
BV090-1 1/2	1 1/2	30	£32.73
BV090-2	2	25	£51.47
BV090-2 1/2	2 1/2	18	£118.10
BV090-3	3	16	£184.96
BV090-4	4	14	£296.49



ISO 228 3-Way Ball Valves



Working Temperature
-20°C to +150°C
in the absence of steam



Working Pressure:
25 bar (362 psi)

3-Way L-Port Ball Valve

Female



- Suitable for domestic water services, heating and air-conditioning plants and compressed air systems
- Nickel-plated forged brass body with steel lever handle
- L-Port
- 3 x female threads to ISO 228 (equivalent to DIN EN ISO 228 and BS EN ISO 288)

PGC: 117	BSPP	Price
BV128-1/4L	1/4	£34.49
BV128-3/8L	3/8	£34.49
BV128-1/2L	1/2	£34.49
BV128-3/4L	3/4	£52.74
BV128-1L	1	£77.07
BV128-1 1/4L	1 1/4	£117.61
BV128-1 1/2L	1 1/2	£166.28
BV128-2L	2	£247.39

3-Way T-Port Ball Valve

Female



- Suitable for domestic water services, heating and air-conditioning plants and compressed air systems
- Nickel-plated forged brass body with steel lever handle
- T-Port
- 3 x female threads to ISO 228 (equivalent to DIN EN ISO 228 and BS EN ISO 288)

PGC: 117	BSPP	Price
BV128-1/4T	1/4	£34.49
BV128-3/8T	3/8	£34.49
BV128-1/2T	1/2	£34.49
BV128-3/4T	3/4	£52.74
BV128-1T	1	£77.07
BV128-1 1/4T	1 1/4	£117.61
BV128-1 1/2T	1 1/2	£166.28
BV128-2T	2	£247.39



Spare Handles for ITAP Ball Valves

Please Contact our Sales Team for More Information

Ecological Ball Valves

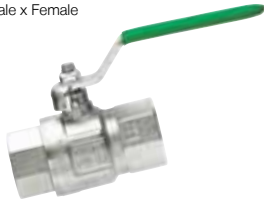
Ecological ball valves in compliance with the new European regulations for drinkable water (Council Directive 98/83/EC). Approved in accordance with standard EN 13828:2003 and Code of Practice DVGW W 570 for the distribution of water for human consumption. Equipped with a ball designed to avoid the stagnation of water and the eventual proliferation of bacteria inside the valve.



Working Temperature:
-20°C to +150°C
in the absence of steam

Green® Flat Handle

Full Flow Ball Valve
Female x Female



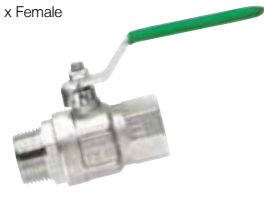
DRINKABLE WATER, ANTI-LEGIONNAIRE'S DISEASE

- EU approved for potable water to EN 13828
- Chrome-plated brass body with lined steel handle
- Female threads to ISO 7/1 Rp parallel (equivalent to DIN EN 10226-1 and BS EN 10226-1 (formerly BS 21))

PGC: 117	BSPP	Working Pressure (bar)	Price
BV376-1/4	1/4	50	£5.85
BV376-3/8	3/8	50	£6.05
BV376-1/2	1/2	30	£7.97
BV376-3/4	3/4	30	£10.47
BV376-1	1	30	£15.94
BV376-11/4	1 1/4	25	£28.04
BV376-11/2	1 1/2	25	£43.22
BV376-2	2	25	£60.26

Green® Flat Handle

Full Flow Ball Valve
Male x Female



DRINKABLE WATER, ANTI-LEGIONNAIRE'S DISEASE

- EU approved for potable water to EN 13828
- Chrome-plated brass body with lined steel handle
- Male threads to ISO 7/1 Rp parallel (equivalent to DIN EN 10226-1 and BS EN 10226-1 (formerly BS 21))
- Female threads to ISO 7/1 Rp parallel (equivalent to DIN EN 10226-1 and BS EN 10226-1 (formerly BS 21))

PGC: 117	BSP	Working Pressure (bar)	Price
BV377-1/4	1/4	50	£6.37
BV377-3/8	3/8	50	£6.71
BV377-1/2	1/2	30	£8.43
BV377-3/4	3/4	30	£11.12
BV377-1	1	30	£16.77
BV377-11/4	1 1/4	25	£29.49
BV377-11/2	1 1/2	25	£45.11
BV377-2	2	25	£62.40

Green® Tee Handle

Full Flow Ball Valve
Female x Female



DRINKABLE WATER, ANTI-LEGIONNAIRE'S DISEASE

- EU approved for potable water to EN 13828
- Chrome-plated brass body with aluminium tee handle
- Female threads to ISO 7/1 Rp parallel (equivalent to DIN EN 10226-1 and BS EN 10226-1 (formerly BS 21))

PGC: 117	BSPP	Price
BV378-1/4	1/4	£5.60
BV378-3/8	3/8	£5.88
BV378-1/2	1/2	£7.81
BV378-3/4	3/4	£10.11
BV378-1	1	£15.60

Green® Tee Handle

Full Flow Ball Valve
Male x Female



DRINKABLE WATER, ANTI-LEGIONNAIRE'S DISEASE

- EU approved for potable water to EN 13828
- Chrome-plated brass body with aluminium tee handle
- Male threads to ISO 7/1 Rp parallel (equivalent to DIN EN 10226-1 and BS EN 10226-1 (formerly BS 21))
- Female threads to ISO 7/1 Rp parallel (equivalent to DIN EN 10226-1 and BS EN 10226-1 (formerly BS 21))

PGC: 117	BSP	Price
BV379-1/4	1/4	£6.14
BV379-3/8	3/8	£6.46
BV379-1/2	1/2	£8.26
BV379-3/4	3/4	£10.79
BV379-1	1	£16.44

Gate Valves

Brass Gate Valve PN10 / PN16

Female x Female



Working Temperature:
0°C to +120°C
in the absence of steam



Working Pressure:
1/4" - 2" 10 bar (145 psi);
2 1/2" - 4" 16 bar (232 psi)



- Suitable for domestic water services and heating plants
- Brass body with steel handle
- Female threads to ISO 228 (equivalent to DIN 259 and BS 2779)

PGC: 117	BSPP	Price
GV155-1/4	1/4	£6.98
GV155-3/8	3/8	£6.98
GV155-1/2	1/4	£6.50
GV155-3/4	3/4	£7.55
GV155-1	1	£10.64
GV155-11/4	1 1/4	£16.64
GV155-11/2	1 1/2	£22.13
GV155-2	2	£31.89
GV155-21/2	2 1/2	£65.35
GV155-3	3	£80.99
GV155-4	4	£146.51

Brass Gate Valve PN20

Female x Female



Working Temperature:
-20°C to +150°C
in the absence of steam



Working Pressure:
20 bar (290 psi)



- Suitable for domestic water services and heating plants
- Brass body with steel handle
- Female threads to ISO 228 (equivalent to DIN 259 and BS 2779)

PGC: 117	BSPP	Price
GV157-1/2	1/2	£8.12
GV157-3/4	3/4	£11.63
GV157-1	1	£16.31
GV157-11/4	1 1/4	£23.06
GV157-11/2	1 1/2	£30.71
GV157-2	2	£44.00
GV157-21/2	2 1/2	£72.65
GV157-3	3	£92.53
GV157-4	4	£167.50

Europa® Non Return Valve

Female x Female



Working Temperature:
-20°C to +100°C



- Check valve suitable for domestic water services, heating and air-conditioning plants, compressed air systems
- Brass body and pin
- Stainless steel plate and spring
- Seal: NBR
- Can be installed in any position: vertical, horizontal, oblique
- Female threads to ISO 228 (equivalent to DIN 259 and BS 2779)

PGC: 117	BSPP	Working Pressure (bar)	Price
NRV6B-EUROPA	3/8	25	£7.32
NRV8B-EUROPA	1/2	25	£7.50
NRV12B-EUROPA	3/4	25	£10.26
NRV16B-EUROPA	1	25	£14.23
NRV20B-EUROPA	1 1/4	18	£22.61
NRV24B-EUROPA	1 1/2	18	£30.44
NRV32B-EUROPA	2	18	£47.21
NRV40B-EUROPA	2 1/2	12	£107.34
NRV48B-EUROPA	3	12	£161.62
NRV64B-EUROPA	4	12	£266.69

York® Non Return Valve

Female x Female



Working Temperature:
-20°C to +100°C



- Check valve suitable for domestic water services, heating and air-conditioning plants, compressed air systems
- Brass body
- Stainless steel plate and spring
- Seal: NBR
- Can be installed in any position: vertical, horizontal, oblique
- Female threads to ISO 228 (equivalent to DIN 259 and BS 2779)

PGC: 117	BSPP	Working Pressure (bar)	Price
NRV6B-YORK	3/8	12	£5.34
NRV8B-YORK	1/2	12	£5.36
NRV12B-YORK	3/4	12	£7.53
NRV16B-YORK	1	12	£9.79
NRV20B-YORK	1 1/4	10	£14.20
NRV24B-YORK	1 1/2	10	£21.10
NRV32B-YORK	2	10	£29.92
NRV40B-YORK	2 1/2	8	£56.63
NRV48B-YORK	3	8	£80.42
NRV64B-YORK	4	8	£139.84

Strainer



- Strainer for Europa®, Roma® and York® non return valves
- Stainless steel strainer
- Threaded end in nylon
- Degree of Filtration: 3/8" to 2" : 1200 µm, 2" to 4" : 2000 µm
- Female thread to ISO 228 (equivalent to DIN 259 and BS 2779)

PGC: 117	BSPP	Price
NRV6FIL	3/8	£1.38
NRV8FIL	1/2	£1.45
NRV12FIL	3/4	£1.66
NRV16FIL	1	£1.86
NRV20FIL	1 1/4	£2.40
NRV24FIL	1 1/2	£3.14
NRV32FIL	2	£4.00
NRV40FIL	2 1/2	£8.01
NRV48FIL	3	£9.80
NRV64FIL	4	£13.52

Roma® Non Return Valve

Female x Female



Working Temperature:
-20°C to +100°C with water
-20°C to +150°C with fluid hydrocarbons or compressed air



- Check valve suitable for domestic water services, heating and air-conditioning plants, compressed air systems
- Suitable for use with gasoline and fuels in general
- Brass body and pin
- Brass outlet plugs with 1/4" thread
- Stainless steel plate and spring
- Seal: Viton®
- Can be installed in any position: vertical, horizontal, oblique
- Female threads to ISO 228 (according to DIN 259 and BS 2779)

PGC: 117	BSPP	Working Pressure (bar)	Price
NRV6B-ROMA	3/8	25	£10.96
NRV8B-ROMA	1/2	25	£11.56
NRV12B-ROMA	3/4	25	£14.49
NRV16B-ROMA	1	25	£19.87
NRV20B-ROMA	1 1/4	18	£27.18
NRV24B-ROMA	1 1/2	18	£38.04
NRV32B-ROMA	2	18	£56.26

Swing Check Valve

Female x Female



Working Temperature:
0°C to +90°C



- Brass body and brass plate swing check valve
- NBR seal and washer
- Female threads to ISO 228 (equivalent to DIN 259 and BS 2779)

PGC: 117	BSPP	Working Pressure (bar)	Price
NRV130-3/8	3/8	12	£7.70
NRV130-1/2	1/2	12	£7.16
NRV130-3/4	3/4	12	£9.95
NRV130-1	1	12	£15.23
NRV130-1 1/4	1 1/4	10	£22.25
NRV130-1 1/2	1 1/2	10	£28.71
NRV130-2	2	10	£40.83

Y-Strainer

Female x Female



Working Temperature:
-20°C to +110°C
in the absence of steam



- Suitable for domestic water services, heating and air-conditioning plants, compressed air systems
- Brass body
- Degree of Filtration: 1/4" to 2" : 500 µm, 2 1/2", 3", 4" : 800 µm
- Female threads to ISO 228 (equivalent to DIN 259 and BS 2779)

PGC: 117	BSPP	Working Pressure (bar)	Price
YS192-1/4	1/4	20	£5.24
YS192-3/8	3/8	20	£5.28
YS192-1/2	1/2	20	£5.35
YS192-3/4	3/4	20	£8.66
YS192-1	1	20	£13.80
YS192-1 1/4	1 1/4	20	£20.58
YS192-1 1/2	1 1/2	20	£27.48
YS192-2	2	20	£45.55
YS192-2 1/2	2 1/2	16	£81.68
YS192-3	3	16	£117.97
YS192-4	4	16	£232.35

valve cimberio

Valves

Globe and Gate Valves

- Manufactured in accordance with BS 5154/B and EN ISO 9002
- Cimberio globe and gate valves can be used in a wide range of plants, in any industrial and agricultural application where fine regulation is required:
 - heating plants, steam and waterworks
 - plumbing services, sanitary systems
 - gasoline networks, petroleum and other hydrocarbons

CIM 75 Globe Valve PN 20

Metal to Metal Seating
Female x Female



Working Pressure:
20 bar (290 psi)
at 0°C to +100°C;
9 bar (130 psi)
at +100°C to +180°C



- Cast bronze body with aluminum wheel
- Optional soft (PTFE) seat

PGC: 255	BSPP	Price
GLV8-BR20	1/2	£25.04
GLV12-BR20	3/4	£32.29
GLV16-BR20	1	£51.00
GLV20-BR20	1 1/4	£64.48
GLV24-BR20	1 1/2	£91.93
GLV32-BR20	2	£161.28

CIM 58 Gate Valve Standard Type PN 16 Full Port



Working Pressure:
20 bar (290 psi)
at +10°C to +100°C;
Saturated Steam:
9 bar (130 psi) at +100°C



- Hot-forged brass body with aluminum wheel
- Screwed-in bonnet, non-rising stem and solid wedge disc design

PGC: 255	BSPP	Price
GV8B-CIM	1/2	£7.59
GV12B-CIM	3/4	£10.61
GV16B-CIM	1	£13.13
GV32B-CIM	2	£43.18

Type 16 Lever Handles

- Steel lever handle
- Manufactured to ISO 9000 / EN 29000
- Pressure Rating: dependant on temperature
- For use with:
 - Domestic and commercial plumbing
 - Heating/sanitary systems and waterworks
 - Saturated steam and hot water services
 - Condensate lines
 - Industrial and agricultural applications
 - Pneumatic systems and compressed air
 - Oil pipelines, oil and gasoline networks
 - Petrol and other hydrocarbon services
 - Generally all non-aggressive fluids

CIM 10 Lever Handle Type 16 PN 40

Full Bore Ball Valve
Female x Female



PGC: 254	BSPP	Price
CIM10-1/4	1/4	£7.83
CIM10-3/8	3/8	£11.55
CIM10-1/2	1/2	£16.63
CIM10-3/4	3/4	£24.55
CIM10-1	1	£32.00
CIM10-11/4	1 1/4	£52.32
CIM10-11/2	1 1/2	£68.62
CIM10-2	2	£108.64
CIM10-21/2	2 1/2	£275.85
CIM10-3	3	£433.93
CIM10-4	4	£433.93

CIM 17 Lever Handle Type 16 PN 32

Full Bore Ball Valve
Female x Female



PGC: 254	BSPP	Price
CIM17-1/4	1/4	£4.76
CIM17-3/8	3/8	£4.76
CIM17-1/2	1/2	£4.93
CIM17-3/4	3/4	£6.84
CIM17-1	1	£10.59
CIM17-11/4	1 1/4	£16.56
CIM17-11/2	1 1/2	£23.21
CIM17-2	2	£34.70
CIM17-21/2	2 1/2	£92.98
CIM17-3	3	£146.58
CIM17-4	4	£257.29

Types T10 and T16 Gas Lever Handles

- Manufactured to EN 29000 - ISO 9000
- For gas at low pressure for the distribution of:
 - Natural gas: obtained from petroleum (methane) and propane/air mixtures
 - Town gas: produced according to different process (cracking, coking, etc.)
 - Liquid gas: propane and mixtures of propane/butane

CIM 10G Lever Handle Type T10

Full Bore Ball Valve for Gas
Female x Female



Temperature Range:
-20°C to +60°C



Pressure Rating:
20 bar (290 psi)

- Aluminium lever handle
- Certified by BG Technology in accordance with the European standard EN 331:1998
- Approved in accordance with the European standard for gas appliances (90/396/EEC)

PGC: 254	BSPP	Price
CIM10G-1/4	1/4	£8.10
CIM10G-3/8	3/8	£8.06
CIM10G-1/2	1/2	£11.98
CIM10G-3/4	3/4	£18.03
CIM10G-1	1	£24.72
CIM10G-11/4	1 1/4	£38.81
CIM10G-11/2	1 1/2	£50.44
CIM10G-2	2	£83.39
CIM10G-21/2	2 1/2	£204.42
CIM10G-3	3	£309.95
CIM10G-4	4	£506.07

CIM 17G Lever Handle Type T16

Full Bore Ball Valve for Gas
Female x Female



Temperature Range:
-20°C to +150°C;
Gas:
-20°C to +60°C



Pressure Rating:
Fluids:
32 bar (464 psi);
Saturated Steam:
9 bar (130 psi);
Compressed Air, Gas
(Families 1, 2 & 3):
20 bar (290 psi)

- Iron P02 lever handle
- DIN DVGW in accordance with EN 331: 1998
- Pascal Institute according to PED 97/23/CE

PGC: 254	BSPP	Price
CIM17G-1/4	1/4	£4.76
CIM17G-3/8	3/8	£4.76
CIM17G-1/2	1/2	£4.93
CIM17G-3/4	3/4	£6.84
CIM17G-1	1	£17.46
CIM17G-11/4	1 1/4	£16.56
CIM17G-11/2	1 1/2	£23.21
CIM17G-2	2	£34.70
CIM17G-21/2	2 1/2	£92.98
CIM17G-3	3	£146.58
CIM17G-4	4	£257.29

Type T10 Butterfly Handles

CIM 310G -Butterfly Handle

Type T10 PN 40

Full Bore Ball Valve for Gas
Female x Female



Temperature Range:
-20°C to +180°C



- Aluminium butterfly handle
- Certified by BG Technology in accordance with the European standard EN 331:1998
- Approved in accordance with the European standard for gas appliances (90/396/EEC)
- Manufactured to ISO 9000 / EN 29000
- Pressure Rating: dependant on temperature
- Suitable for gas at low pressure for the distribution of:
 - Natural Gas: obtained from petroleum (methane) and propane/air mixtures
 - Town Gas: produced according to different process (cracking, coking, etc.)
 - Liquid Gas: propane and mixtures of propane/butane

PGC: 254	BSPP	Price
CIM310G-1/4	1/4	£8.25
CIM310G-3/8	3/8	£11.55
CIM310G-1/2	1/2	£16.63
CIM310G-3/4	3/4	£24.55
CIM310G-1	1	£32.00
CIM310G-1 1/4	1 1/4	£52.32
CIM310G-1 1/2	1 1/2	£68.62
CIM310G-2	2	£108.64

CIM 310 Butterfly Handle

Type T10 PN 40

Full Bore Ball Valve
Female x Female



Temperature Range:
-20°C to +180°C



- Aluminium butterfly handle
- Manufactured to ISO 9000 / EN 29000
- Pressure Rating: dependant on temperature
- Can be used for:
 - Domestic and commercial plumbing
 - Heating/sanitary systems and water-works
 - Hot water services and saturated steam
 - Industrial and agricultural applications
 - Pneumatic systems
 - Oil pipelines, oil and gasoline networks
 - Condensate lines
 - Petrol and other hydrocarbon services
 - Generally all non-aggressive fluids

PGC: 254	BSPP	Price
CIM310-1/4	1/4	£11.46
CIM310-3/8	3/8	£11.55
CIM310-1/2	1/2	£16.63
CIM310-3/4	3/4	£24.55
CIM310-1	1	£32.00
CIM310-1 1/4	1 1/4	£52.32
CIM310-1 1/2	1 1/2	£68.62
CIM310-2	2	£108.64

Filtrasfera Integral Strainers

CIM 620 "Filtrasfera"

Full Bore Ball Valve
with In-Built Strainer



Temperature Range:
-20°C to +150°C



Pressure Rating:
50 bar (725 psi)



PATENT N° 0341345

- In-built 316 stainless steel strainer
- Aluminium alloy (al-si 12) handle
- Lockable and/or sealable in open and closed positions to prevent tampering
- Manufactured in accordance with ISO 9000 / EN 29000
- Can be used for:
 - Heating/sanitary systems and water works
 - Industrial and agricultural applications
 - Saturated steam
 - Pneumatic systems
 - Oil pipelines, oil and gasoline networks
 - Protecting and expediting installation for the filtration of fluid, collecting impurities, sand, rust, metal shavings, assuring total protection of the system

PGC: 254	Price
CIM620-1/2	£17.70

Type Red 5 Lever Handles

CIM Red 5 Lever Handle PN 20

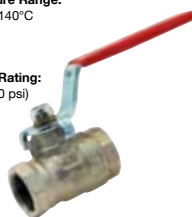
Full Bore Ball Valve
Female x Female



Temperature Range:
-20°C to +140°C



Pressure Rating:
40 bar (580 psi)



- Steel lever handle
- Manufactured to ISO 9000 / EN 29000
- Can be used for:
 - Heating/sanitary systems and water-works
 - Hot water services
 - Industrial and agricultural applications
 - Saturated steam
 - Pneumatic systems
 - Oil pipelines, oil and gasoline networks
 - Condensate lines
 - Petrol and other hydrocarbon services
 - Generally all non-aggressive fluids

PGC: 254	BSPP	Price
RED5-1/2	1/2	£5.75
RED5-3/4	3/4	£8.88
RED5-1	1	£11.93
RED5-1 1/4	1 1/4	£17.80
RED5-1 1/2	1 1/2	£30.48
RED5-2	2	£46.56

Type T14 Lever Handles

CIM 300 Type T14

Drain Ball Valve



- Aluminium lever handle
- Manufactured to ISO 9000 / EN 29000
- For use with:
 - Domestic and commercial plumbing
 - Heating/sanitary systems and water-works
 - Industrial and agricultural applications
 - Pneumatic systems
 - Oil pipelines and oil
 - Generally all non-aggressive fluids

PGC: 254	BSP	Price
CIM300-2	2	£72.63

Furbo Expansion Joints

CIM 341 "Furbo" Expansion Joint

Female x Male



- Telescopic expansion union manufactured in accordance with ISO 9000 / EN 29000
- Designed for hydraulic, heating, sanitary and pneumatic systems
- Easily screwed into pipework
- Recommended for repair or replacement of details, installation of pumps and where pipe systems are thermally stressed
- Simultaneous fitting and expansion union

PGC: 254	BSP	Price
CIM341-1/2	1/2	£13.40
CIM341-3/4	3/4	£13.40
CIM341-1	1	£22.02
CIM341-1 1/2	1 1/2	£33.14

Rubistar Ball Bib Cocks

CIM 34 "Rubistar"

Ball Bib Cock

With Hose Union



- Nickel-plated with aluminium lever handle
- Manufactured to ISO 9000 / EN 29000
- For use with:
 - Domestic plumbing
 - Industrial and agricultural applications
 - Generally all non-aggressive fluids
- Exceptional wear resistance — superior to the traditional bib cock
- Completely leak-proof under normal conditions
- Angle through design offers little resistance to flow and reduces pressure drop to a minimum

PGC: 254	BSP	Price
CIM34-3/4	3/4	£12.18



Brass Ball Valves & Non-Return Valves

Gas Approved Ball Valves



Working Temperature
-20°C to +150°C
(Class T2 under EN 331)



Working Pressure:
40 bar (580 psi)

Ball Valve Gas Approved

Female x Female
BSPT



- Manufactured according to EN 12165
- BSP taper threads

PGC: 116	BSPT	Price
BV4TBG	1/4	£6.90
BV6TBG	3/8	£6.90
BV8TBG	1/2	£8.23
BV12TBG	3/4	£12.08
BV16TBG	1	£17.12
BV20TBG	1 1/4	£29.45
BV24TBG	1 1/2	£44.48
BV32TBG	2	£67.67
BV40TBG	2 1/2	£155.35
BV48TBG	3	£200.29
BV64TBG	4	£345.50

Ball Valve Gas Approved

Female x Female
BSPP



- Manufactured according to EN 12165
- Female parallel threads to ISO 228

PGC: 116	BSPP	Price
BV4B-2BG	1/4	£8.53
BV6B-2BG	3/8	£9.03
BV8B-2BG	1/2	£11.33
BV12B-2BG	3/4	£17.04
BV16B-2BG	1	£24.94

Ball Valve Gas Approved

Female x Female
BSPP



- Manufactured according to EN 12165
- Female parallel threads to ISO 228

PGC: 116	BSPP	Price
BV4BG	1/4	£5.55
BV6BG	3/8	£5.55
BV8BG	1/2	£6.22
BV12BG	3/4	£8.67
BV16BG	1	£12.89
BV20BG	1 1/4	£21.52
BV24BG	1 1/2	£27.17
BV32BG	2	£41.45
BV40BG	2 1/2	£119.91
BV48BG	3	£164.77
BV64BG	4	£257.90

Ball Valve Gas Approved

Male x Female
BSPP



- Manufactured according to EN 12165
- Female parallel threads to ISO 228

PGC: 116	BSPP	Price
BV4MFBG	1/4	£5.34
BV6MFBG	3/8	£5.34
BV8MFBG	1/2	£6.01
BV12MFBG	3/4	£8.20
BV16MFBG	1	£12.42
BV20MFBG	1 1/4	£20.18
BV24MFBG	1 1/2	£26.60
BV32MFBG	2	£39.34

WRAS Approved Ball Valves

Ball Valve WRAS Approved

Female x Female BSPP



Working Temperature
-10°C to +100°C



Working Pressure:
25 bar (362 psi)



- Female parallel threads to ISO 228

PGC: 116	BSPP	Price
BV8B-1	1/2	£5.55
BV12B-1	3/4	£7.78
BV16B-1	1	£11.75
BV20B-1	1 1/4	£19.30
BV24B-1	1 1/2	£24.14
BV32B-1	2	£37.03

Ball Valve WRAS Approved

Female x Female BSPP



Working Temperature
-20°C to +150°C



Working Pressure:
40 bar (580 psi)



- Manufactured according to EN 12165
- Female parallel threads to ISO 228

PGC: 116	BSPP	Price
BV4WRC	1/4	£8.10
BV6WRC	3/8	£6.10
BV8WRC	1/2	£9.21
BV12WRC	3/4	£12.73
BV16WRC	1	£19.28
BV20WRC	1 1/4	£30.08
BV24WRC	1 1/2	£45.42
BV32WRC	2	£69.29
BV40WRC	2 1/2	£119.91
BV48WRC	3	£164.77
BV64WRC	4	£257.90

Ball Valve WRAS Approved

Female x Female
BSPP



Working Temperature:
-20°C to +150°C



Working Pressure:
40 bar (580 psi)



WRAS
APPROVED
PRODUCT

- Manufactured according to EN 12165
- Female parallel threads to ISO 228

PGC: 116	BSPP	Price
BV4B-2WRC	1/4	£8.53
BV6B-2WRC	3/8	£9.03
BV8B-2WRC	1/2	£11.33
BV12B-2WRC	3/4	£17.04
BV16B-2WRC	1	£24.94

Ball Valve

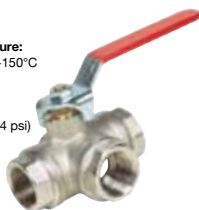
3-Way T-Port



Working Temperature:
-20°C to +150°C



Working Pressure:
32 bar (464 psi)



PGC: 116	BSPP	Price
BV4B-3T	1/4	£58.82
BV6B-3T	3/8	£58.82
BV8B-3T	1/2	£60.97
BV12B-3T	3/4	£99.63
BV16B-3T	1	£145.81
BV20B-3T	1 1/4	£196.33
BV24B-3T	1 1/2	£321.40
BV32B-3T	2	£490.08

Y Strainers & Mesh Filters

Y Strainer



Working Temperature:
-20°C to +120°C



Working Pressure:
20 bar (290 psi)



- Stainless steel screen

PGC: 251	BSPP	Price
YS4B	1/4	£7.40
YS6B	3/8	£7.40
YS8B	1/2	£8.29
YS12B	3/4	£11.07
YS16B	1	£15.37
YS20B	1 1/4	£26.41
YS24B	1 1/2	£31.72
YS32B	2	£48.61

Ball Valve WRAS Approved

Male x Female



Working Temperature:
-20°C to +150°C



Working Pressure:
40 bar (580 psi)



WRAS
APPROVED
PRODUCT

- Manufactured according to EN 12165
- Male threads BSPT
- Female parallel threads to ISO 228

PGC: 116	BSP	Price
BV4MFWR	1/4	£5.34
BV6MFWR	3/8	£5.34
BV8MFWR	1/2	£6.01
BV12MFWR	3/4	£8.20
BV16MFWR	1	£12.42
BV20MFWR	1 1/4	£20.18
BV24MFWR	1 1/2	£26.60
BV32MFWR	2	£39.34

Non-Return Valves

Spring Check Non-Return Valve



Working Pressure:
3/8 - 1": 16 bar (232 psi);
1 1/4 - 2": 10 bar (145 psi)



- Brass body
- NBR seat
- Stainless steel AISI 302 spring

PGC: 259	BSPP	Price
NRV6B	3/8	£8.00
NRV8B	1/2	£8.88
NRV12B	3/4	£11.54
NRV16B	1	£16.43
NRV20B	1 1/4	£24.15
NRV24B	1 1/2	£33.68
NRV32B	2	£51.60
NRV40B	2 1/2	£110.53
NRV48B	3	£149.79
NRV64B	4	£235.19

Mesh Filter



Working Temperature:
0°C to +110°C



- Stainless steel mesh

PGC: 117	BSP	Length (mm)	Working Pressure (bar)	Price
NRV6FIL	3/8	47	16	£1.38
NRV8FIL	1/2	54	16	£1.45
NRV12FIL	3/4	60	16	£1.66
NRV16FIL	1	64	16	£1.86
NRV20FIL	1 1/4	72	10	£2.40
NRV24FIL	1 1/2	82	10	£3.14
NRV32FIL	2	95	10	£4.00
NRV40FIL	2 1/2	96	8	£8.01
NRV48FIL	3	112	8	£9.80
NRV64FIL	4	127	8	£13.52

12

3-Way Ball Valves

Ball Valve

3-Way L-Port



Working Temperature:
-20°C to +150°C



Working Pressure:
32 bar (464 psi)



PGC: 116	BSPP	Price
BV4B-3L	1/4	£58.82
BV6B-3L	3/8	£58.82
BV8B-3L	1/2	£60.97
BV12B-3L	3/4	£99.63
BV16B-3L	1	£145.81
BV20B-3L	1 1/4	£196.33
BV24B-3L	1 1/2	£321.40
BV32B-3L	2	£459.76

Swing Check Non-Return Valve



Working Temperature:
-20°C to +90°C



Working Pressure:
16 bar (232 psi)



- Brass body
- Metal seat

PGC: 259	BSPP	Price
NRV6-SC	3/8	£7.94
NRV8-SC	1/2	£9.93
NRV12-SC	3/4	£12.11
NRV16-SC	1	£16.77
NRV20-SC	1 1/4	£21.24
NRV24-SC	1 1/2	£27.50
NRV32-SC	2	£39.63

Gate Valves

Brass Gate Valve



Working Pressure:
20 bar (290 psi) at -10°C to +100°C;
Saturated Steam: 9 bar (130 psi) at +100°C

- Manufactured to BS 5154

PGC: 256	BSPP	Price
GV8B	1/2	£5.78
GV12B	3/4	£7.68
GV16B	1	£10.71
GV20B	1 1/4	£15.24
GV24B	1 1/2	£20.65
GV32B	2	£28.63
GV40B	2 1/2	£46.07
GV48B	3	£63.91
GV64B	4	£116.13

Mini Ball Valves

General Use

Mini Ball Valve PN16

Reduced Bore
Male x Female



Working Temperature:
-10°C to +90°C



Working Pressure:
15 bar
(220 psi)



- Brass body, polished chrome-plated finish
- Lever handle

PGC: 260	BSP	Price
BV2MF-MINI	1/8	£3.75
BV4MF-MINI	1/4	£3.94
BV6MF-MINI	3/8	£4.08
BV8MF-MINI	1/2	£4.71
BV12MF-MINI	3/4	£8.56

Mini Ball Valve PN16

Reduced Bore
Female x Female



Working Temperature:
-10°C to +90°C



Working Pressure:
15 bar
(220 psi)



- Brass body, polished chrome-plated finish
- Lever handle

PGC: 260	BSPP	Price
BV2-MINI	1/8	£3.75
BV4-MINI	1/4	£4.03
BV6-MINI	3/8	£3.86
BV8-MINI	1/2	£4.87
BV12-MINI	3/4	£8.56

Mini Ball Valve PN16 Screwdriver Slot

Reduced Bore
Male x Female



Working Temperature:
-20°C to +150°C



Working Pressure:
15 bar
(220 psi)



- Brass body, polished chrome-plated finish

PGC: 260	BSP	Price
BV4MF-MINI-SD	1/4	£3.37

Mini Ball Valve PN16

Reduced Bore
Male x Female



Working Temperature:
-10°C to +90°C



Working Pressure:
15 bar
(220 psi)



- 316 stainless steel
- Lever handle

PGC: 260	BSP	Price
BV4MF-MINI-SS	1/4	£41.58
BV6MF-MINI-SS	3/8	£41.58
BV8MF-MINI-SS	1/2	£47.48

Mini Ball Valve PN16

Reduced Bore
Female x Female



Working Temperature:
-10°C to +90°C



Working Pressure:
15 bar
(220 psi)



- 316 stainless steel
- Lever handle

PGC: 260	BSPP	Price
BV4-MINI-SS	1/4	£41.58
BV6-MINI-SS	3/8	£41.58
BV8-MINI-SS	1/2	£47.48

Gas Approved

Mini Compression Ball Valve



Working Temperature:
-10°C to +120°C



- Brass body, polished chrome-plated finish
- Lever handle
- Tested and certified to EN 331: 1997

PGC: 260	OD (mm)	Price
BV1414-3/8	3/8	£4.51
BV1414-8	8 mm	£4.37
BV1414-10	10 mm	£4.63
BV1414-12	12 mm	£5.70
BV1414-15	15 mm	£4.64

Mini Reducing Compression Ball Valve



Working Temperature:
-10°C to +120°C



- Brass body, polished chrome-plated finish
- Lever handle
- Tested and certified to EN 331: 1997

PGC: 260	OD 1 (mm)	OD 2 (mm)	Price
BV1415-10-8	10	8	£4.34
BV1415-12-10	12	10	£5.06
BV1415-15-8	15	8	£6.55
BV1415-15-10	15	10	£6.85
BV1415-15-12	15	12	£6.79

Mini Angle Compression Ball Valve



Working Temperature:
-10°C to +120°C



- Brass body, polished chrome-plated finish
- Lever handle
- Tested and certified to EN 331: 1997

PGC: 260	OD (mm)	Price
BV1417-8	8	£4.63
BV1417-10	10	£6.52
BV1417-15	15	£9.53

Mini Angle Reducing Compression Ball Valve



Working Temperature:
-10°C to +120°C



- Brass body, polished chrome-plated finish
- Lever handle
- Tested and certified to EN 331: 1997

PGC: 260	OD 1 (mm)	OD 2 (mm)	Price
BV1418-10-8	10	8	£7.79
BV1418-15-8	15	8	£7.06
BV1418-15-10	15	10	£7.58

Mini Compression Ball Valve

Foot Mounted



Working Temperature:
-10°C to +120°C

British Gas

- Brass body, polished chrome-plated finish
- Lever handle
- Tested and certified to EN 331: 1997

PGC: 260	OD	Price
BV1419-3/8	3/8	£6.67
BV1419-8	8 mm	£6.33
BV1419-10	10 mm	£7.95

Mini Ball Valve

Male x Compression



Working Temperature:
-10°C to +120°C

British Gas

- Brass body, polished chrome-plated finish
- Lever handle
- Tested and certified to EN 331: 1997

PGC: 260	OD (mm)	BSPT	Price
BV1416-8-1/4	8	1/4	£5.16
BV1416-10-1/4	10	1/4	£5.70
BV1416-10-3/8	10	3/8	£6.01
BV1416-12-3/8	12	3/8	£6.69

Mini Ball Valve

Female x Female



Working Temperature:
-10°C to +120°C

British Gas

- Brass body, polished chrome-plated finish
- Lever handle
- Tested and certified to EN 331: 1997

PGC: 260	OD (mm)	BSPT	Price
BV1416-8-1/4	8	1/4	£5.16
BV1416-10-1/4	10	1/4	£5.70
BV1416-10-3/8	10	3/8	£6.01
BV1416-12-3/8	12	3/8	£6.69

Mini Ball Valve

Male x Female



Working Temperature:
-10°C to +120°C

British Gas

- Brass body, polished chrome-plated finish
- Lever handle
- Tested and certified to EN 331: 1997

PGC: 260	OD (mm)	Price
BV1413-1/4	1/8	£5.45
BV1413-3/8	1/4	£6.49

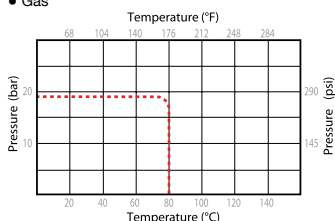


AIGNEP

Ghilux
Series

Gas Approved Mini Ball Valves

- Industrial, pneumatic, domestic and hydraulic installations
- Compressed air
- Water
- Oils
- Gas



Mini Ball Valve

Female



Working Temperature:
-20°C to +80°C



Working Pressure:
19 bar
(285 psi)

British Gas

- Brass body, polished chrome-plated finish
- Lever handle
- Tested and certified by to EN 331: 1997

PGC: 670	BSPP	Price
6300-18	1/8	£13.16
6300-14	1/4	£11.53
6300-38	3/8	£14.19
6300-12	1/2	£17.99

Mini Ball Valve

Male x Female



Working Temperature:
-20°C to +80°C



Working Pressure:
19 bar
(285 psi)

British Gas

- Brass body, polished chrome-plated finish
- Lever handle
- Tested and certified by to EN 331: 1997

PGC: 670	BSPT	BSPP	Price
6310-18-18	1/8	1/8	£13.14
6310-14-18	1/4	1/8	£13.62
6310-14-14	1/4	1/4	£13.62
6310-38-38	3/8	3/8	£14.34
6310-12-12	1/2	1/2	£18.09
6310-34-34	3/4	3/4	£23.69

Mini Ball Valve

BSPP to BSPP



Working Temperature:

-20°C to +80°C



Working Pressure:
19 bar
(285 psi)

British Gas

- Brass body, polished chrome-plated finish
- Lever handle
- Tested and certified by to EN 331: 1997

PGC: 670	Male	Female	Price
6320-18-18	1/8	1/8	£10.44
6320-14-18	1/4	1/8	£9.74
6320-14-14	1/4	1/4	£13.72
6320-38-38	3/8	3/8	£14.06
6320-12-12	1/2	1/2	£18.02

Mini Ball Valve

Male x Male



Working Temperature:

-20°C to +80°C



Working Pressure:
19 bar
(285 psi)

British Gas

- Brass body, polished chrome-plated finish
- Lever handle
- Tested and certified by to EN 331: 1997

PGC: 670	BSPT	BSPP	Price
6330-18-18	1/8	1/8	£10.38
6330-18-14	1/8	1/4	£10.38
6330-14-14	1/4	1/4	£10.72
6330-12-12	1/2	1/2	£18.02

Mini Ball Valve

Male x Male



Working Temperature:

-20°C to +80°C



Working Pressure:
19 bar
(285 psi)

British Gas

- Brass body, polished chrome-plated finish
- Lever handle
- Tested and certified by to EN 331: 1997

PGC: 670	BSPP 1	BSPP 2	Price
6420-18-18	1/8	1/8	£10.38
6420-18-14	1/4	1/8	£9.74
6420-14-14	1/4	1/4	£13.72
6420-38-34	3/8	1/4	£13.11
6420-38-38	3/8	3/8	£13.39
6420-12-12	1/2	1/2	£16.90

12

Compression Mini Ball Valves

Compression Mini Ball Valve

Female



Working Temperature:
-20°C to +80°C



Working Pressure:
19 bar
(285 psi)



British Gas

- Brass body, polished chrome-plated finish
- Lever handle
- Tested and certified to EN 331: 1997

PGC: 670	OD (mm)	BSPP	Price
6340-6-18	6	1/8	£10.72
6340-8-18	8	1/8	£10.28
6340-8-14	8	1/4	£10.66
6340-10-38	10	3/8	£11.32
6340-15-12	15	1/2	£16.14

Compression Mini Ball Valve

Male



Working Temperature:
-20°C to +80°C



Working Pressure:
19 bar
(285 psi)



- Brass body, polished chrome-plated finish
- Lever handle
- Tested and certified to EN 331: 1997

PGC: 670	OD (mm)	BSPP	Price
6440-1/8-6	6	1/8	£10.11
6440-1/4-6	6	1/4	£10.01
6440-1/8-8	8	1/8	£10.25
6440-1/4-8	8	1/4	£10.78
6440-3/8-8	8	3/8	£9.76
6440-1/4-10	10	1/4	£10.50
6440-3/8-10	10	3/8	£10.71
6440-1/2-12	12	1/2	£11.14
6440-3/8-15	15	3/8	£11.86
6440-1/2-15	15	1/2	£18.90
6440-3/4-15	15	3/4	£15.50

Push-Fit Mini Ball Valve

Male



Working Temperature:
-20°C to +80°C



Working Pressure:
19 bar
(285 psi)



- Brass body, polished chrome-plated finish

PGC: 670	OD (mm)	BSPT	Price
6570-1/8-4	4	1/8	£15.00
6570-1/8-6	6	1/8	£15.48
6570-1/4-6	6	1/4	£16.94
6570-1/8-8	8	1/8	£12.76
6570-1/4-8	8	1/4	£13.71

3-Way Valve L Port

Female



Working Temperature:
-10°C to +120°C



Working Pressure:
19 bar
(285 psi)



- Brass body, polished chrome-plated finish
- Lever handle

PGC: 670	OD (mm)	Price
6700-1/8	1/8	£28.24
6700-1/4	1/4	£28.94
6700-3/8	3/8	£31.52

3-Way Valve T Port

Female



Working Temperature:
-10°C to +120°C



Working Pressure:
19 bar
(285 psi)



- Brass body, polished chrome-plated finish
- Lever handle

PGC: 670	BSPP	Price
6710-1/8	1/8	£21.11
6710-1/4	1/4	£28.80
6710-3/8	3/8	£23.46

Angle Valve

Female



Working Temperature:
-10°C to +120°C



Working Pressure:
19 bar
(285 psi)



- Brass body, polished chrome-plated finish
- Lever handle

PGC: 670	BSPP	Price
6720-1/8	1/8	£25.48
6720-1/4	1/4	£26.05
6720-3/8	3/8	£28.72

Compression Mini Ball Valve

Male



Working Temperature:
-20°C to +80°C



Working Pressure:
19 bar
(285 psi)



British Gas

- Brass body, polished chrome-plated finish
- Lever handle
- Tested and certified to EN 331: 1997

PGC: 670	OD (mm)	BSPT	Price
6350-18-6	6	1/8	£39.13
6350-14-6	6	1/4	£13.64
6350-18-8	8	1/8	£10.52
6350-14-8	8	1/4	£14.12
6350-38-10	10	3/8	£11.10
6350-38-12	12	3/8	£11.15
6350-12-15	15	1/2	£20.09

Foot Mounted Mini Ball Valve



Working Temperature:
-10°C to +120°C



Working Pressure:
19 bar
(285 psi)



- Brass body, polished chrome-plated finish
- Lever handle
- Tested and certified to EN 331: 1997

PGC: 670	OD (mm)	Price
6500-8	8	£22.05

Mini Ball Valves

Push-Fit Mini Ball Valve



Working Temperature:
-10°C to +120°C



Working Pressure:
19 bar
(285 psi)



- Brass body, polished chrome-plated finish
- Lever handle

PGC: 670	OD (mm)	Price
6560-4	4	£13.46
6560-6	6	£19.04

Spare Mini Valve Handles

Spare Handle for Mini Valve Range



Working Temperature:
-10°C to +120°C



- Spare handles for the mini ball valve range
- For 1/4", 3/8" and 1/2" valves use 35 mm long handle
- For 1/2" and 3/4" valves use 50 mm handle
- Handle not supplied with insert

PGC: 670	BSPP	Price
6910-A	35	£1.73
6910-B	50	£1.87

Coloured Handle Inserts

1/8" to 3/8"



PGC: 670	Colour	Price
6920-A-B	Blue	£0.83
6920-A-G	Green	£0.61
6920-A-R	Red	£0.61
6920-A-W	White	£0.61
6920-A-Y	Yellow	£0.83

Coloured Handle Inserts

1/2" to 3/4"



PGC: 670	Colour	Price
6920-B-B	Blue	£0.83
6920-B-G	Green	£0.61
6920-A-B	Red	£0.61
6920-B-Y	Yellow	£0.61
6920-B-W	White	£0.61

Compact Non Return Valves

Compact Non Return Valve

Female



Working Temperature:
-18°C to +70°C



PGC: 670	Thread	Price
6062-18	1/8	£10.02
6062-14	1/4	£14.48
6062-38	3/8	£26.41
6062-12	1/2	£27.25
6062-M5	M5	£10.49

Compact Non Return Valve

Male x Female



Working Temperature:
-18°C to +70°C



PGC: 670	BSPP	Price
6063-18	1/8	£10.64
6063-14	1/4	£12.96
6063-38	3/8	£28.23
6063-12	1/2	£29.24

Push-Fit Non Return Valve



Working Temperature:
-18°C to +70°C



Working Pressure:
15 bar
(218 psi)



PGC: 670	BSPP	Price
6064-4	4	£11.52
6064-6	6	£15.23
6064-8	8	£16.29

Quick Exhaust Valves

Quick Exhaust Valve



Working Temperature:
-18°C to +70°C



- Brass body

PGC: 670	Thread	Price
6050-18	1/8	£12.92
6050-14	1/4	£15.31
6050-38	3/8	£18.80
6050-12	1/2	£25.88
6050-34	3/4	£34.57
6050-M5	M5	£8.20



- Nickel-plated brass body, nylon lever handle
- Threads: ISO 228 (equivalent to DIN 259 and BS 2779)
- Suitable for:
 - Domestic water services
 - Heating and air-conditioning plants
 - Compressed air systems



Working Temperature:
0°C to +90°C



Working Pressure:
15 bar
(220 psi)

Mini Ball Valve

Black Handle
Female x Female



PGC: 117	BSPP	Price
BV125-1/4BK	1/4	£3.72
BV125-3/8BK	3/8	£3.57
BV125-1/2BK	1/2	£4.48
BV125-3/4BK	3/4	£6.58

Mini Ball Valve

Red Handle
Female x Female



PGC: 117	BSPP	Price
BV125-1/4R	1/4	£3.72
BV125-3/8R	3/8	£3.57
BV125-1/2R	1/2	£4.48
BV125-3/4R	3/4	£6.72

Mini Ball Valve

Black Handle
Male x Female



PGC: 117	BSP	Price
BV126-1/4BK	1/4	£3.64
BV126-3/8BK	3/8	£3.47
BV126-1/2BK	1/2	£4.34
BV126-3/4BK	3/4	£6.53

Mini Ball Valve

Red Handle
Male x Female



PGC: 117	BSP	Price
BV126-1/4R	1/4	£3.64
BV126-3/8R	3/8	£3.47
BV126-1/2R	1/2	£4.34
BV126-3/4R	3/4	£6.53

12



Stainless Steel Valves

Ball Valves

1-Piece Reduced Bore Ball Valve



Temperature Range:
-29°C to +204°C



Working Pressure:
69 bar (1000 psi)



- Female BSPP
- Body: ASTM 351-CF8M
- Seat: PTFE

PGC: 250	BSPP	Length (mm)	Price
BV4SS-RB	1/4	39	£18.98
BV6SS-RB	3/8	44	£19.34
BV8SS-RB	1/2	55	£21.49
BV12SS-RB	3/4	59	£30.06
BV16SS-RB	1	69	£38.73
BV20SS-RB	1 1/4	77	£56.10
BV24SS-RB	1 1/2	81	£64.85
BV32SS-RB	2	97	£88.55

3-Piece Reduced Bore Ball Valve



Temperature Range:
-29°C to +204°C



Working Pressure:
69 bar (1000 psi)



- Female BSPP
- Body: ASTM 351-CF8M
- Seat: PTFE

PGC: 250	BSPP	Length (mm)	Price
BV4SS-3P	1/4	65	£36.01
BV6SS-3P	3/8	65	£36.01
BV8SS-3P	1/2	65	£39.99
BV12SS-3P	3/4	75	£52.33
BV16SS-3P	1	85	£69.63
BV20SS-3P	1 1/4	101	£84.75
BV24SS-3P	1 1/2	112	£135.36
BV32SS-3P	2	130	£180.00

12

2-Piece Full Bore Ball Valve



Temperature Range:
-29°C to +204°C



Working Pressure:
69 bar (1000 psi)



- Female BSPP
- Body: ASTM 351-CF8M
- Seat: PTFE

PGC: 250	BSPP	Length (mm)	Price
BV4SS-FB	1/4	51	£30.60
BV6SS-FB	3/8	51	£30.60
BV8SS-FB	1/2	58	£31.59
BV12SS-FB	3/4	65	£41.46
BV16SS-FB	1	79	£56.25
BV20SS-FB	1 1/4	90	£83.53
BV24SS-FB	1 1/2	105	£105.41
BV32SS-FB	2	124	£152.57

3-Way Reduced Bore L-Port



Temperature Range:
-29°C to +204°C



Working Pressure:
69 bar (1000 psi)



- Female BSPP
- Body: ASTM 351-CF8M
- Seat: PTFE

PGC: 250	BSPP	Length (mm)	Price
BV4SS-3L	1/4	76	£112.13
BV6SS-3L	3/8	76	£112.13
BV8SS-3L	1/2	76	£117.09
BV12SS-3L	3/4	86	£143.97
BV16SS-3L	1	100	£194.47
BV20SS-3L	1 1/4	117	£238.90
BV24SS-3L	1 1/2	124	£339.59
BV32SS-3L	2	148	£474.61

3-Way Reduced Bore T-Port



Working Temperature:
-29°C to +204°C



Working Pressure:
69 bar (1000 psi)



- Female BSPT
- Body: ASTM 351-CF8M
- Seat: PTFE

PGC: 250	BSPT	Length (mm)	Price
BV4SS-3T	1/4	70	£112.13
BV6SS-3T	3/8	70	£112.13
BV8SS-3T	1/2	75	£117.09
BV12SS-3T	3/4	86	£143.97
BV16SS-3T	1	101	£194.47
BV20SS-3T	1 1/4	115	£238.90
BV24SS-3T	1 1/2	125	£339.59
BV32SS-3T	2	149	£474.61

Check Valves

Spring Check Valve

Stainless Steel



Working Temperature:
-20°C to +100°C



Working Pressure:
5 bar (72 psi)
(5 psi cracking pressure)



PGC: 263	BSPP	Price
NRV4SS	1/4	£57.56
NRV6SS	3/8	£53.65
NRV8SS	1/2	£64.54
NRV12SS	3/4	£95.83
NRV16SS	1	£144.13
NRV20SS	1 1/4	£134.53
NRV24SS	1 1/2	£143.60
NRV32SS	2	£285.61

Swing Check Valve

Stainless Steel



Working Temperature:
-40°C to +260°C



Working Pressure:
32 bar (464 psi)



PGC: 261	BSPP	Price
NRV4SC-SS	1/4	£74.31
NRV6SC-SS	3/8	£63.52
NRV8SC-SS	1/2	£62.41
NRV12SC-SS	3/4	£75.17
NRV16SC-SS	1	£95.58
NRV20SC-SS	1 1/4	£138.66
NRV24SC-SS	1 1/2	£171.85
NRV32SC-SS	2	£211.22

Y Strainer

Y Strainer



Working Temperature:
-32°C to +240°C



Working Pressure:
40 bar (580 psi)



- Female BSPP
- Body: ASTM 351-CF8M

PGC: 252	BSPP	Price
YS4SS	1/4	£29.92
YS6SS	3/8	£29.92
YS8SS	1/2	£29.92
YS12SS	3/4	£40.55
YS16SS	1	£55.37
YS20SS	1 1/4	£86.54
YS24SS	1 1/2	£109.74
YS32SS	2	£169.25

Gate Valves

Gate Valve

Stainless Steel



Working Temperature:
-40°C to +260°C



Working Pressure:
32 bar (464 psi)



PGC: 257	BSPP	Length (mm)	Price
GV8SS	1/2	54	£75.33
GV12SS	3/4	58	£90.94
GV16SS	1	65	£108.05
GV20SS	1 1/4	74	£141.03
GV24SS	1 1/2	78	£188.80
GV32SS	2	87	£241.27

Globe Valves

Globe Valve

Stainless Steel



Working Temperature:
-40°C to +260°C



Working Pressure:
32 bar (464 psi)



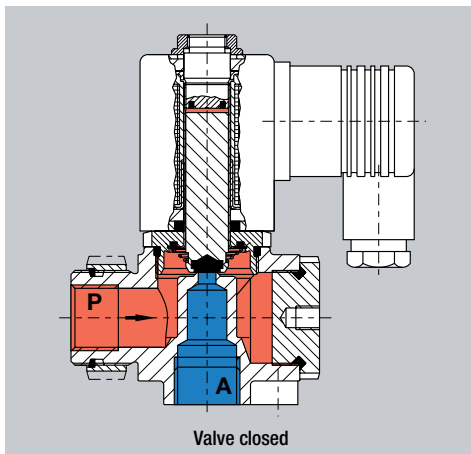
PGC: 268	BSPP	Length (mm)	Price
GLV4SS	1/4	65	£70.66
GLV6SS	3/8	65	£68.97
GLV8SS	1/2	65	£67.69
GLV12SS	3/4	80	£85.35
GLV16SS	1	90	£111.50
GLV20SS	1 1/4	105	£142.24
GLV24SS	1 1/2	120	£190.55
GLV32SS	2	140	£278.77



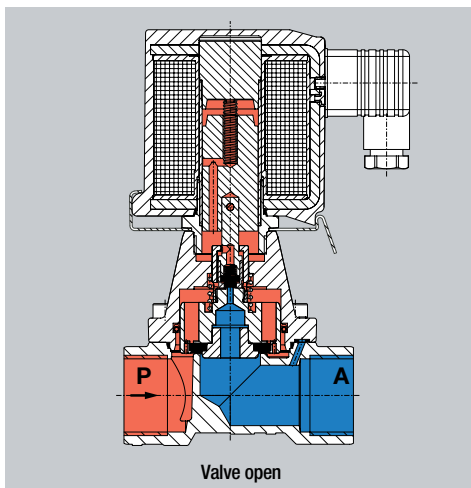
NORGREN

Process Valves

Direct Acting Solenoid Valves



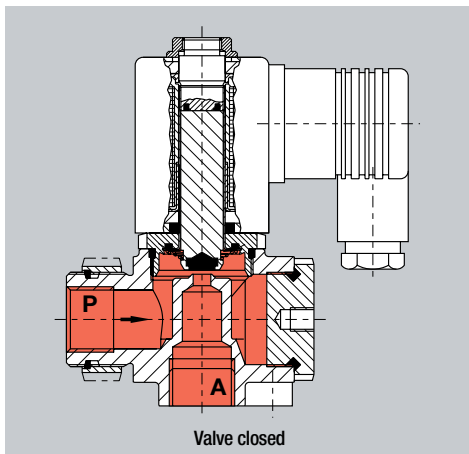
This type of valve is actuated entirely by the solenoid force. The plunger with a seal acting as the main closure device is forced directly onto the valve seat by the fluid pressure and closing spring. The valve is opened directly by the solenoid force only.



Solenoid Valves without Differential Pressure

Pressure

(direct acting or indirect acting with forced lifting)

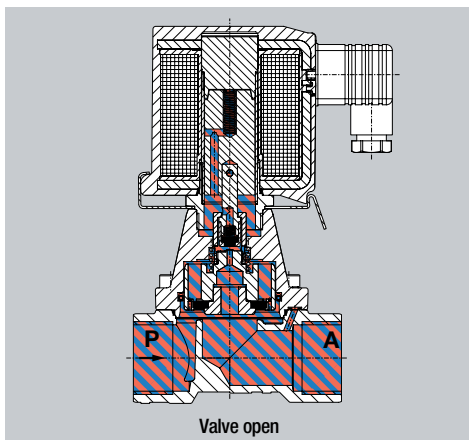


The force produced by the solenoid plunger, which is mechanically coupled to the main closure device, opens this type of valve.

The sequence starts with the solenoid opening the pilot seat. This relieves the pressure on the main closure device, bringing it into balance so the solenoid force can lift it into the open position.

When the pilot seat is closed, bleed orifices allow a force to build up on the closure device that pushes it down into the closed position on the valve seat.

These valves are preferred for use where the differential pressure is very low or zero.

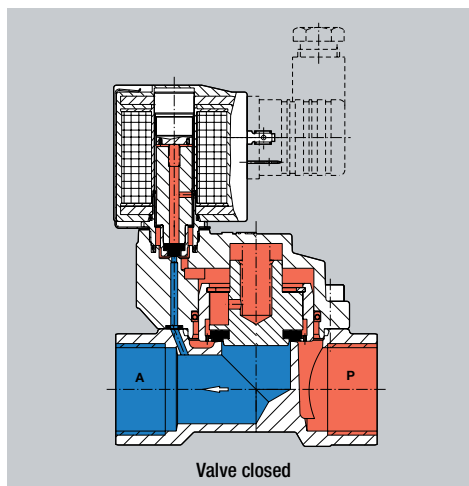


Valve Basics

Solenoid Valves with Differential Pressure

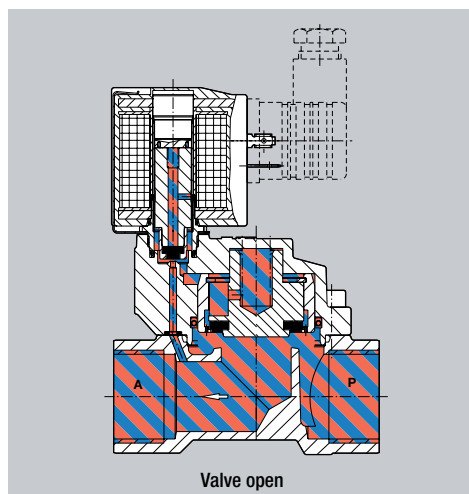
Pressure

(servo assisted, pilot operated or indirect acting)



These valves operate on the servo assistance principle, which requires a specified differential pressure for opening and closing. The solenoid opens the pilot seat. This relieves the pressure on the main closure device, which is raised into the open position by the increasing effective force on its underside.

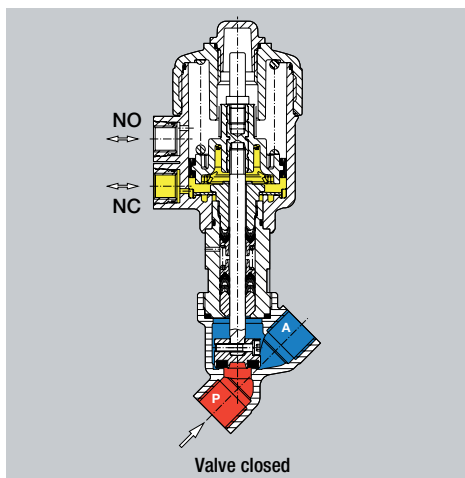
Closure of the pilot seat builds up a closing force on the main closure device via bleed orifices. Provided the inlet pressure is at least the required differential higher than the outlet pressure, the valve remains securely closed.



Pressure Actuated Valves –

Principle of Operation

(pneumatically actuated isolating valves)

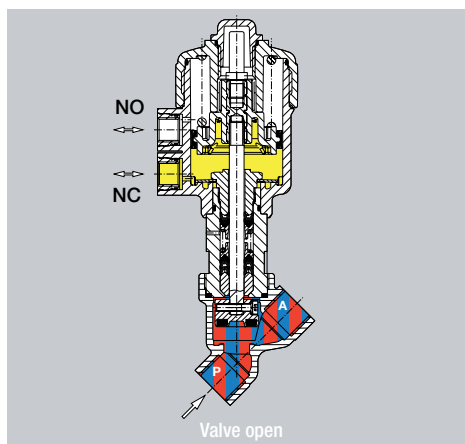


This type of valve is controlled by a pilot fluid supplied to the actuator by means of a pilot valve.

A stem connects the closure device to the control element of the actuator. The spring acting on the control element forces the closure device down into the closed position on the valve seat.

The pilot supply overcomes the spring force to lift the control element into the open position.

These valves are mainly suitable for contaminated or extremely viscous process fluids.





NORGREN

Process Valves



Buschjost



Click-On® Diaphragm Valve

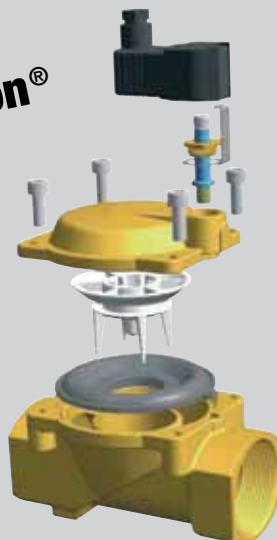
- Optimised flow range
- Compact
- New design
- Reliable switching function
- Solenoid mounted without tools
- Solenoid secured with stainless steel spring clip
- Any mounting position
- Excellent flow capacities
- Conforms to international safety requirements
- Ideal match of materials
- Damped operation
- Minimal number of components
- Solenoid plastic encapsulated
- Optional NPT thread
- Dry solenoid system
- Low power consumption
- CE mark
- Optionally for fluids up to +200°C



Click-On® Piston Valve

Click-On®
Diaphragm Valve

Click-on®



Click-On®
Piston Valve

Click-on®





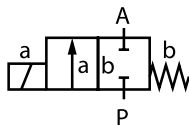
2/2-Way Valves

82510 Series 2/2-Way Valve DN 2.5

BSPP Thread (ISO G)



Click-on®
Solenoid interchangeable without tools



- For neutral gases and liquids*
- Direct solenoid actuated
- Seat valves
- Internal thread G 1/8 to G 3/8

Specifications (Standard Valve)

Switching Function: Normally closed

Flow Direction: Determined

Maximum Fluid Pressure: 10 bar

Fluid Temperature: -10°C up to max. +90°C

Ambient Temperature: -10°C up to max. +50°C

Mounting Position: As required, preferably with solenoid vertical on top

82510 Series Materials

Body: Brass

Seat Seal: NBR

Internal Parts: Stainless steel, brass

Features

- Suitable for vacuum
- High flow rate
- Functional compact design
- Mounting thread M5
- Solenoid interchangeable without tools (Click-on®)
- Valve operates without pressure differential

PGC: 170	Port Size	Voltage	Orifice / DN (mm)	Price
8251820.9101.02400	G1/8	24 V DC	2.5	£42.32
8251120.9101.02402	G3/8	24 V DC	2.5	£55.22
8251820.9101.11050	G1/8	110 V AC	2.5	£42.32
8251020.9101.11050	G1/4	110 V AC	2.5	£48.77
8251120.9101.11050	G3/8	110 V AC	2.5	£55.22
8251820.9101.23050	G1/8	230 V AC	2.5	£42.32
8251020.9101.23050	G1/4	230 V AC	2.5	£48.77
8251120.9101.23050	G3/8	230 V AC	2.5	£55.22

* For contaminated fluids the use of a strainer upstream of the valve is recommended.

82400 Series 2/2-Way Valve DN 8 to DN 50

BSPP Thread (ISO G)



Click-on®
Solenoid interchangeable without tools



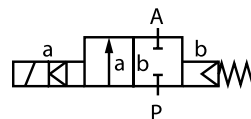
EC type examination up to ND 25

acc. to DIN EN 60730-2-8

Solenoid Valves

Test laboratory

TÜV Rheinland / Brandenburg



- For neutral gases and liquids*
- Indirect solenoid actuated
- Diaphragm valves
- Internal thread G 1/8 to G 3/8

Specifications

Switching Function: Normally closed

Flow Direction: Determined

Differential Pressure: 0.1 bar required

Operating Pressure: 0.1 bar to 10 bar

Fluid Temperature: -10°C up to max. +90°C

Ambient Temperature: -10°C up to max. +50°C

Mounting Position: As required, preferably with solenoid vertical on top

Fluid Viscosity: Up to 25mm²/s

82400 Series Materials

Body: Brass

Seat Seal: NBR

Internal Parts: Stainless steel, PVDF

Features

- High flow rate with damped operation
- Functional compact design
- Solenoid interchangeable without tools (Click-on®)
- Particularly suitable as water valve according to DIN EN 60730-2-8

PGC: 170	Port Size	Voltage	Orifice / DN (mm)	Price
8240000.9101.02400	G1/4	24 V DC	8	£48.48
8240100.9101.02400	G3/8	24 V DC	10	£48.48
8240200.9101.02400	G1/2	24 V DC	12	£61.98
8240300.9101.02400	G3/4	24 V DC	20	£81.46
8240400.9101.02400	G1	24 V DC	25	£129.37
8240500.9101.02400	G1 1/4	24 V DC	32	£232.32
8240600.9101.02400	G1 1/2	24 V DC	40	£250.60
8240700.9101.02400	G2	24 V DC	50	£289.01
8240000.9101.11050	G1/4	110 V AC	8	£48.48
8240100.9101.11050	G3/8	110 V AC	10	£48.48
8240200.9101.11050	G1/2	110 V AC	12	£61.98
8240300.9101.11050	G3/4	110 V AC	20	£81.46
8240400.9101.11050	G1	110 V AC	25	£129.37
8240500.9101.11050	G1 1/4	110 V AC	32	£232.32
8240600.9101.11050	G1 1/2	110 V AC	40	£250.60
8240700.9101.11050	G2	110 V AC	50	£289.01
8240000.9101.23050	G1/4	230 V AC	8	£48.48
8240100.9101.23050	G3/8	230 V AC	10	£48.48
8240200.9101.23050	G1/2	230 V AC	12	£61.98
8240300.9101.23050	G3/4	230 V AC	20	£81.46
8240400.9101.23050	G1	230 V AC	25	£129.37
8240500.9101.23050	G1 1/4	230 V AC	32	£232.32
8240600.9101.23050	G1 1/2	230 V AC	40	£250.60
8240700.9101.23050	G2	230 V AC	50	£289.01

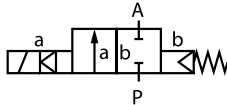
82470 Series 2/2-Way Valve DN 8 to DN 25 BSPP Thread (ISO G)



Click-on®
Solenoid interchangeable without tools



EC type examination up to ND 25
acc. to DIN EN 60730-2-8
Solenoid Valves
Test Laboratory
TÜV Rheinland / Brandenburg



- For hot water and steam
- Indirect solenoid actuated
- Diaphragm valves
- Internal thread G 1/4 to G 1

Specifications (Standard Valve)

Switching Function: Normally closed
Flow Direction: Determined
Differential Pressure: 0.1 bar required
Operating Pressure: 0.1 bar to 10 bar
Fluid Temperature: -10°C up to max. +150°C
Ambient Temperature: -10°C up to max. +60°C
Mounting Position: As required, preferably with solenoid vertical on top
Fluid Viscosity: Up to 25 mm²/s

82470 Series Materials

Body: Brass
Seat Seal: HNBR
Internal Parts: Stainless steel, brass

For contaminated fluids the use of a strainer upstream of the valve is recommended.

Features

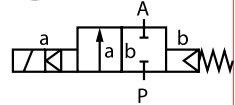
- High flow rate
- Damped operation
- Functional compact design
- Solenoid interchangeable without tools (Click-on®)
- Particularly suitable as water valve according to DIN EN 60730-2-8

PGC: 170	Port Size	Voltage	Orifice / DN (mm)	Price
8247000.9101.02400	G1/4	24 V DC	8	£63.54
8247100.9101.02400	G3/8	24 V DC	10	£63.54
8247200.9101.02400	G1/2	24 V DC	12	£63.54
8247300.9101.02400	G3/4	24 V DC	20	£91.35
8247400.9101.02400	G1	24 V DC	25	£139.09
8247000.9101.11050	G1/4	110 V AC	8	£63.54
8247100.9101.11050	G3/8	110 V AC	10	£71.13
8247200.9101.11050	G1/2	110 V AC	12	£63.54
8247300.9101.11050	G3/4	110 V AC	20	£91.35
8247400.9101.11050	G1	110 V AC	25	£139.09
8247000.9101.23050	G1/4	230 V AC	8	£63.54
8247100.9101.23050	G3/8	230 V AC	10	£63.54
8247200.9101.23050	G1/2	230 V AC	12	£63.54
8247300.9101.23050	G3/4	230 V AC	20	£91.35
8247400.9101.23050	G1	230 V AC	25	£139.09

82540 Series 2/2-Way Valve DN 8 to DN 25 BSPP Thread (ISO G)



Click-on®
Solenoid interchangeable without tools



- For neutral gases and liquids
- Solenoid actuated, with forced lifting
- Diaphragm valves
- Internal thread G 1/4 to G 1

Specifications (Standard Valve)

Switching Function: Normally closed
Flow Direction: Determined
Operating Pressure: 0 bar to 10 bar
Fluid Temperature: -10°C up to max. +90°C
Ambient Temperature: -10°C up to max. +50°C
Mounting Position: As required, preferably with solenoid vertical on top
Fluid Viscosity: Up to 25 mm²/s

82540 Series Materials

Body: Brass
Seat Seal: NBR
Internal Parts: Stainless steel, PVDF, brass

For contaminated fluids the use of a strainer upstream of the valve is recommended.

Features

- High flow rate
- For robust industry applications
- Damped operation
- Suitable for vacuum
- For systems with low or fluctuating pressure
- Valve operates without differential pressure (Zero Delta P)
- Solenoid interchangeable without tools (Click-on®)

PGC: 170	Port Size	Voltage	Orifice / DN (mm)	Price
8254000.9151.02400	G1/4	24 V DC	8	£71.82
8254100.9151.02400	G3/8	24 V DC	10	£71.82
8254200.9151.02400	G1/2	24 V DC	12	£72.99
8254300.9151.02400	G3/4	24 V DC	20	£105.94
8254400.9151.02400	G1	24 V DC	25	£111.83
8254000.9154.11049	G1/4	110 V AC	8	£88.30
8254100.9154.11049	G3/8	110 V AC	10	£88.30
8254200.9154.11049	G1/2	110 V AC	12	£89.44
8254300.9154.11049	G3/4	110 V AC	20	£122.43
8254400.9154.11049	G1	110 V AC	25	£128.31
8254000.9154.23049	G1/4	230 V AC	8	£88.30
8254100.9154.23049	G3/8	230 V AC	10	£88.30
8254200.9154.23049	G1/2	230 V AC	12	£89.44
8254300.9154.23049	G3/4	230 V AC	20	£122.43
8254400.9154.23049	G1	230 V AC	25	£128.31

84500 Series 2/2-Way Valve DN 15 to DN 50

BSPP Thread (ISO G)

- For neutral gases and liquids
- Pressure actuated by external fluid
- Seat valves
- Internal thread G 1/2 to G 2

Specifications (Standard Valve)

Switching Function: Normally closed

Flow Direction: Determined

Mounting Position: As required

Process Fluid Characteristics / Valve Material

Fluid Temperature: -10°C up to max. +180°C

Ambient Temperature: -10°C up to max. +60°C

Fluid Viscosity: Up to 600 mm²/s

Body: Gun metal

Seat Seal: PTFE

Spindle Sealing: PTFE / FPM, self-adjusting

Internal Parts: Brass, stainless steel

Pilot Fluid Characteristics / Actuator Material

Pilot Connection: Only G 1/4 available

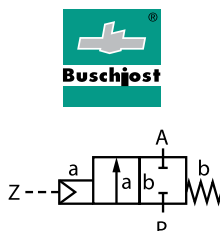
Pilot Fluid: Neutral gases

Fluid Temperature: Max. +60°C

Body: Polymid 66 with 30% fibre glass

Seat Seal: NBR

Internal Parts: Brass, stainless steel



Features

- Easy conversion into "normally open" or "double-acting" without tools
- Optical position indicator is standard
- Damped closing (valve closes against flow direction)
- Suitable for contaminated process fluids
- Suitable for vacuum up to max. 90%
- Reversed flow direction optional
- High flow rate
- Optional pressure actuation with liquid pilot fluids

PGC: 170	Port Size	Orifice / DN (mm)	kv- Value (m ³ /h)	Operating Pressure (bar)	Price
8450200.0000.00000	G1/2	15	4.8	0-16	£123.75
8450300.0000.00000	G3/4	20	10.0	0-10	£135.22
8450400.0000.00000	G1	25	14.0	0-10	£147.88
8450500.0000.00000	G1 1/4	32	23.0	0-7	£243.21
8450600.0000.00000	G1 1/2	40	30.0	0-4.5	£257.73
8450700.0000.00000	2	50	37.0	0-3	£331.37

84520 Series 2/2-Way Valve DN 15 to DN 50

BSPP Thread (ISO G)

- For aggressive gases and liquids
- Pressure actuated by external fluid
- Seat valves
- Internal thread G 1/2 to G 2

Specifications (Standard Valve)

Switching Function: Normally closed

Flow Direction: Determined

Mounting Position: As required

Process Fluid Characteristics / Valve Material

Fluid Temperature: -10°C up to max. +180°C

Ambient Temperature: -10°C up to max. +60°C

Fluid Viscosity: Up to 600 mm²/s

Body: Stainless steel

Seat Seal: PTFE

Spindle Sealing: PTFE / FPM, self-adjusting

Internal Parts: Stainless steel

Pilot Fluid Characteristics / Actuator Material

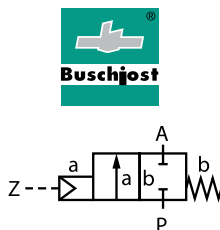
Pilot Fluid: Neutral gases

Fluid Temperature: Max. +60°C

Body: Polymid 66 with 30% fibre glass

Seat Seal: NBR

Internal Parts: Brass, stainless steel



Features

- Easy conversion into "normally open" or "double-acting" without tools
- Optical position indicator is standard
- Damped closing (valve closes against flow direction)
- Suitable for contaminated process fluids
- Suitable for vacuum up to max. 90%
- Reversed flow direction optional
- High flow rate
- Optional pressure actuation with liquid pilot fluids

PGC: 170	Port Size	Orifice / DN (mm)	kv- Value (m ³ /h)	Operating Pressure (bar)	Price
8452200.0000.00000	G1/2	15	4.8	0-16	£220.52
8452300.0000.00000	G3/4	20	10.0	0-10	£234.59
8452400.0000.00000	G1	25	14.0	0-10	£264.27
8452500.0000.00000	G1 1/4	32	23.0	0-7	£321.77
8452600.0000.00000	G1 1/2	40	30.0	0-4.5	£407.94
8452700.0000.00000	2	50	37.0	0-3	£516.18

12

95000 Series 2/2-Way Valve DN 2 to DN 3

BSPP Thread (ISO G)

- For neutral gases and liquids
- Direct operated poppet valves
- Solenoid actuated
- Connection G 1/4

Specifications (Standard Valve)

Operating Pressure: 0 bar to 35 bar

Fluid Temperature: -25°C to +80°C

Ambient Temperature: -25°C to +80°C, depending on solenoid system

Mounting Position: As required, preferably with solenoid on top

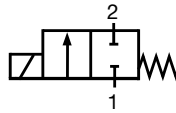
Materials

Body: Brass

Seat Seal: NBR

Internal Parts: Steel 1.4104 (AISI 430F), brass

With contaminated fluids, upstream installation of a dirt trap is recommended.



Symbol 1: 2/2 NC



Features

- No differential pressure required, works from 0 bar
- Short switching times
- For AC solenoid systems with integrated rectifier (40 to 60 Hz)

PGC: 170	Port Size	Voltage	Orifice / DN (mm)	Maximum Fluid Pressure (bar)	Price
9500300.0200.02400	G1/4	24 V DC	3	10	£81.94
9500300.3204.11050	G1/4	110 V AC	3	10	£96.86
9500300.3204.23050	G1/4	230 V AC	3	10	£96.86
9500200.0246.02400	G1/4	24 V DC	2	35	£89.93
9500200.3206.11050	G1/4	110 V AC	2	35	£97.23
9500200.3206.23050	G1/4	230 V AC	2	35	£97.23

3/2-5/2-Way & 5/2-Way Valves

97100 NAMUR Series 3/2-5/2-Way Valve

BSPP Thread (ISO G)

- NAMUR Interface for filtered, non-lubricated and dry compressed air
- Indirectly controlled soft seal spool valves
- Solenoid actuated
- Port size G 1/4

Specifications (Standard Valve)

Operating Pressure: 2 bar to 8 bar

Temperature: -25°C to +50°C

Mounting Position: As required

Flow Direction: Fixed

Nominal Size: 6 mm

Connection 1: G 1/4

Connection 3 and 5: G 1/8

Materials

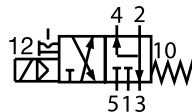
Body: Aluminium anodized

Pilot Flange: PBT

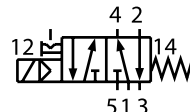
Seals: NBR

Features

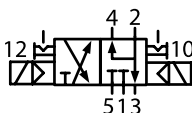
- For single and double operated actuators
- Crossover-free switching, switch-over function guaranteed even with small cross section air supply
- Lockable manual override
- Compact design
- Simple design of soft seal spool system
- Easily interchangeable solenoid



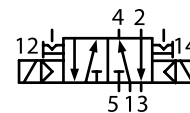
3/2



5/2



3/2



5/2

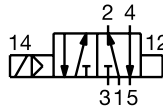


PGC: 170	Port Size	Voltage	Valve Function	Price
9710000.3036.02400	G1/4	24 V DC	3/2, 5/2 Sol / Spr	£85.51
9710000.3036.11050	G1/4	110 V AC	3/2, 5/2 Sol / Spr	£85.51
9710000.3036.23050	G1/4	230 V AC	3/2, 5/2 Sol / Spr	£85.51



Herion 26230 NAMUR Series 6mm orifice (ND) 5/2, G1/4

BSPP Thread (ISO G)



- For single and double operated actuators

Specifications (Standard Valve)

Operating Pressure: 2 bar to 8 bar

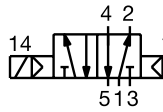
Ambient Temperature:* -10°C to +50°C

Mounting Position: Optional, preferably with solenoid on top

Medium: Compressed air, filtered, lubricated and non-lubricated

Flow Direction: Fixed

Electrical Connection: Connector interface to DIN 43650 Form A



Features

- Standard manual override with detent
- Compact design
- High flow rate
- Simple design of soft spool seal system
- Maintenance-free
- Easily interchangeable solenoid system
- Exhaust air recirculation



Materials

Housing: Aluminium

Pilot Flange: Plastic

Seat Seal: NBR (Perbunan®)

PGC: 170	Port Size	Voltage	Valve Function	Price
2623077.3050.02400	G1/4	24 V DC	5/2 Sol / Spr	£125.88
2623077.3050.11050	G1/4	110 V AC	5/2 Sol / Spr	£125.88
2623077.3050.23050	G1/4	230 V AC	5/2 Sol / Spr	£174.36
2623177.3050.02400	G1/4	24 V DC	5/2 Sol / Sol	£182.09
2623177.3050.11050	G1/4	110 V AC	5/2 Sol / Sol	£182.09
2623177.3050.23050	G1/4	230 V AC	5/2 Sol / Sol	£182.09

ATEX Approved NAMUR Valve with 3m Cable

BSPP Thread (ISO G)



II 2 G EX m II T5

- For EX applications
- ATEX approval in Protection Class II 2 G EX m II T5

PGC: 170	Port Size	Voltage	Valve Function	Price
2623077.3062.02400	G1/4	24 V DC	5/2 Sol / Spr	£125.88

* For temperatures below 0°C use conditioned dry air. If installed outdoors protect all connections against the penetration of moisture. Consult our Sales Team for use below +2°C.

Pressure Switches, Regulators & I/P Convertors

ATEX Approved 18 D Series Mechanical Pressure Switches

Metric Connection

- For EX applications according to ATEX 100:
- Microswitch with gold-plated contacts
- Vibration resistant to 15 g
- Intrinsically safe operation
- Direct interface to Exelon® air line units

Specifications (Standard Valve)

Medium: Pneumatic: for neutral, gaseous, and liquid fluids

Operating Pressure: 0 bar to 35 bar

Fluid Temperature: 0°C to +80°C

Ambient Temperature: 0°C to +80°C

(Consult our Sales Team for use below +2°C)

Mounting Position: Optional

Repeatability: ± 4% of the final value of range

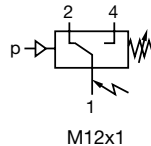
Electrical Connection: IEC 947-5-2 (M12 x 1)

Degree of Protection: IP67 (M12 x 1)

Certification: TÜV EC cert. no. E 8 03 01 11122 007

Zone 2: E II 3 G EX NA / C IIC T6

Zone 22: E II 3 D IP 65 T 80°C



M12x1



Zone 2: E II 3 G EX NA / C IIC T6

Zone 22: E II 3 D IP 65 T 80°C



PERMITTED VOLTAGE: MAXIMUM 30 V



Direct Interface to

NORGREN

Exelon®

Modular Air Preparation Units

Materials

Housing: Aluminium

Sealing: FKM

PGC: 170	Pressure Range (bar)*	Hysteresis (bar)	Maximum Over Pressure (bar)	Maximum Switching Rate (cyc/min)	Sensor Material	Weight (kg)	Price
0880181000000000N	1 - 16	0.15 - 0.18	80	100	FKM/MS	0.2	POA
0880381000000000N	0.5 - 8	0.25 - 0.65	80	100	FKM/MS	0.2	POA
0880481000000000N	1 - 16	0.3 - 0.9	80	100	FKM/MS	0.2	POA

*Switching points should ideally be in the middle of the switching pressure range

33 L Series Electronic Pressure Switch

BSPP Thread (ISO G)

- Fluid Connection G 1/4
- Electrical Connection M12 x 1

Specifications

Medium: Gaseous, liquid, aggressive and neutral, non-combustible
Operating Pressure: 0 bar to 35 bar
Fluid Temperature: -25°C to +80°C. Consult our Sales Team for use below +2°C
Ambient Temperature: -20°C to +80°C
Mounting: Optional
Temperature Sensitivity (Zero Point): 0.4% of final value/10 K
Temperature Sensitivity (Range): 0.4% of final value/10 K
Switching Point: Adjustable between 0 to 100% of FS
Reset Point: Adjustable between 0 to 100% of FS
Accuracy: 1.5% FS (Linearity, hysteresis, repeatability)
Degree of Protection to DIN 40 050: IP65 (< 10 bar) / IP67 (> 10 bar) with plug mounted
Shock Protection: 30 g, xyz, DIN EN 60068-2-27
Vibration Protection: 10 g, 5 Hz to 500 Hz, xyz, DIN EN 60068-2-6
Weight: 0.06 kg

Materials

Housing: Aluminium, stainless steel, polyester
Wetted Parts: -1 bar to 16 bar: aluminium, ceramics, FKM (Viton®)

Mode of output 2 is programmable; Diagnostic acc. to DESINA or switching.
 Switching logic of output 1 and 2 is programmable; NO or NC



Features

- Diagnostic function according to DESINA® (Decentralised and Standardised Installation)
- Display of system pressure
- Easy programming of switchpoints
- Economic solution for industrial applications
- Switching status indicated by 3-colour LED display
- Free of lacquer impairing substances

PGC: 170	Pressure Range (bar)	Hysteresis (bar)	Maximum Over Pressure (bar)	Output Signal	Display Step Size (bar)	Price
0860110000000000	-1 - 1	Adjustable	6	2 x PNP	0.01	POA
0860120000000000	0 - 10	Adjustable	25	2 x PNP	0.05	POA

Watson Smith VP10 Proportional Pressure Control Valve

BSPP Thread (ISO G)

Specifications

Medium: Compressed air filtered to 5 µm, oil-free, dry
Flow Direction: Determined
Mounting: Preferred vertical mounting
Operating Pressure: At least 0.7 bar above maximum required output pressure range
Fluid Temperature: -10°C up to maximum +180°C
Ambient Temperature: -40°C to +85°C. Consult our Sales Team for use below +2°C
Response Time: < 2 bar: less than 0.5 seconds > 2 bar: 2 seconds for 10 to 90% step change
Total Error: ± 0.5% of span
 (typical, independent error includes the combined effect of non-linearity, hysteresis, deadzone and repeatability)

Output Signal: 0.2 bar to 1.0 bar, 0.2 bar to 2.0 bar, 0.2 bar to 4.0 bar (2 wire version), 0.2 bar to 6 bar, 0.2 bar to 8 bar (3 wire version)

Air Consumption: < 4 bar: 0.85 l/min typical at 50% signal > 4 bar: 1.75 l/min typical at 50% signal
Temperature Effect: Average 0.1% of span/°C for span and zero over operating range
Supply Sensitivity: < 0.075% span output change per % supply pressure change
Failure Mode: Signal falls to bleed pressure when electrical supply fails

Materials

Body: Passivated zinc die-casting, epoxy painted
Diaphragms: Nitrile
Internal: Beryllium copper/brass
Flapper Nozzle and Supply Valve: Stainless steel / nylon

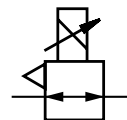
Electrical Information

Electromagnetic Compatibility: This is a passive electromagnetic instrument and is unaffected by interfering high frequency signals

Electrical Signal: Two wire version 4 mA to 20 mA or 0 V to 10 V
 Three wire version requires 12 V DC to 24 V DC supply

Connections: 30 mm square connector DIN 43650 provided, mountable in four directions (alternative connections available)

WatsonSmith



Features

- Robust proportional I/P and E/P converters
- Suitable for a wide range of applications
- High accuracy
- High flow versions available
- IP 65 protection in normal operation

PGC: 170	Control Signal	Output Pressure (bar)	Flow (l/min)	Weight (kg)	Price
VP1001BJ100A00	0 - 10 V	0.2 - 1	300	0.823	£606.79
VP1001BJ400A00	4 - 20 mA	0.2 - 1	300	0.823	£451.50
VP1002BJ100A00	0 - 10 V	0.2 - 2	300	0.823	£505.62
VP1002BJ400A00	4 - 20 mA	0.2 - 2	300	0.823	£505.62
VP1004BJ100A00	0 - 10 V	0.2 - 4	300	0.823	£606.79
VP1004BJ400A00	4 - 20 mA	0.2 - 4	300	0.823	£606.79
VP1006BJ101A00	0 - 10 V	0.2 - 6	300	0.823	£549.35
VP1006BJ401A00	4 - 20 mA	0.2 - 6	300	0.823	£505.62
VP1008BJ101A00	0 - 10 V	0.2 - 8	300	0.823	£596.09
VP1008BJ401A00	4 - 20 mA	0.2 - 8	300	0.823	£606.79

Watson Smith 140 Failsafe Series Current to Pressure Electronic Converter

1/4" NPT Thread

Specifications

Medium: Compressed air min. filtered to 50 µm, oil-free, dry (internal inbuilt air filter)
Output Signal: 0.2 bar to 1 bar
Flow: Up to 300 NI/min
Air Consumption: < 2.5 NI/min at 50% signal
Instrument Accuracy: Mean < 0.1%
Mounting: Integral bracket allows for surface or 50 mm pipe mounting in any orientation
Ambient Temperature: -40°C to +85°C. Consult our Sales Team for use below +2°C
Linearity: Mean < 0.05% of span
Hysteresis: Mean < 0.05% of span
Temperature Effect: Typically less than 0.035% span/°C between -40°C to +85°C
Supply Sensitivity: Less than 0.1% of span over full supply pressure range
Calibration: Independent control of 0% and 100% set points
 Adjustable by potentiometers up to 20% of output range
 Unit is factory calibrated to within 1% of span
Fail-safe: Signal falls to below 15 mbar in < 2 s, when input signal fails.
Tight Shut-off Control: Potentiometer sets input signal failure at 3.5 mA
Degree of Protection: IP66, NEMA 4X
Vibration Immunity: < 3% for vibration amplitude 4 mm 5 Hz to 15 Hz, 2g 15 Hz to 150 Hz

Materials

Body: Aluminium and zinc die-casting
Diaphragms: Nitrile
 Black epoxy powder coating standard

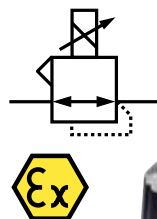
Electrical Information

Electromagnetic Compatibility: Compliant with EC requirements EN 50081-2:1994 (Emissions) and EN 50082-2:1995 (Immunity)
Electrical Signal: 4 mA to 20mA (two wire)
 Terminal voltage < 6.5 V @ 20 mA
Minimum Operating Current: > 3.5 mA
Overload Protection: 100 mA maximum overload current
Insulation Resistance: > 100 MΩ at 850 V DC, electrical terminals to case
Electrical Connections: 1/2" NPT or M20 via adaptor; internal block with capacity up to 2.5 mm² cable

Features

- Advanced electronic control
- ATEX certified
- Explosion proof and intrinsically safe
- Complete electronics modularity for ease of maintenance
- Jack socket for on-site monitoring
- Fail-safe (unit pressure falls to zero on signal failure)
- Field replaceable filter

WatsonSmith



PGC: 170	Description	Output Pressure (bar)	Flow (NI/min)	Weight (kg)	Price
EX140-01BJ4LE2	CENELEC (M20 via Adaptor)	0.2 - 1	300	2.07	POA
EX140-01BJ4EE1	Triple Certification / Triple Agency	0.2 - 1	300	2.07	POA

Watson Smith 422 Failfreeze Series Current to Pressure Electronic Converter

1/4" NPT Thread

Specifications

Medium: Compressed air, filtered to 5 µm, oil-free, dry
Output Signal: 0.2 bar to 1 bar minimum outlet pressure less than 140 mbar
Flow: Up to 300 NI/min
Air Consumption: 0.2 l/min typical
Operating Pressure: At least 0.7 bar above maximum output pressure
Mounting: Operation in any attitude is possible without recalibration; integral surface mounting bracket provided for vertical mounting
Ambient Temperature: -20°C to +70°C. Consult our Sales Team for use below +2°C
Response Time: 6 seconds
Total Error: Max. error ± 0.5% of span (low pressure), 0.5% (high pressure) (typical, independent error includes combined effect of non-linearity, hysteresis, deadzone and repeatability)
Temperature Effect: Typically better than 1% span between -10°C and +60°C
Supply Sensitivity: Negligible effect
Degree of Protection: IP65
Vibration Immunity: The unit possesses a high degree of immunity

Materials

Body: Aluminium and zinc diecasting
Diaphragms: Nitrile
 Black epoxy powder coating standard

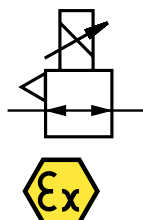
Electrical Information

Electromagnetic Compatibility: Compliant and CE marked in accordance with the EC E.M.C. directive. Tested to standards: BS EN50082-2: 1995 & BS EN50081-2: 1994
Electrical Signal: 4 mA to 20mA (two wire); load presents 6 V (± 0.5 V) constant voltage drop to the current source
Failure Mode: Signal held at previous value when input signal falls below 2 mA ± 0.5 mA; drift rate 0.02% in 30 seconds (mid-range)
Electrical Connections: 30 mm square connector DIN 43650 provided, mountable in four directions

Features

- Advanced electronic control
- Failfreeze operation (output pressure retained on power failure)
- Vibration immune
- IP65 environment protection
- ATEX approved

WatsonSmith



CE

PGC: 170	Output Pressure (bar)	Flow (NI/min)	Weight (kg)	Price
53AC2100	0.2 - 1	300	0.8	POA
53AC2400	0.2 - 1	300	0.8	POA

12

Watson Smith R27 Series Precision Pressure Regulators

1/4" NPT Thread

- High-precision manual pressure regulator which regulates pressure by use of a control chamber instead of a spring, so increasing its sensitivity to any variations and eliminating any spring hysteresis.
- Perfect for dead-end applications
- Excellent long term stability

Specifications

Medium: Dry, oil free air filtered to 5 µm

Maximum Inlet Pressure: 10 bar

Ports: 1/4" NPT

Ambient Temperature: -20°C to +70°C. Consult our Sales Team for use below +2°C

Flow Capacity: Up to 5 dm³/s

Hysteresis & Repeatability: Less than 0.005% setting at midrange

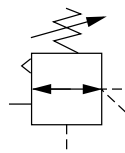
Materials

Body: Passivated zinc die-casting

Internal springs: Mild steel

Elastomers: Reinforced nylon

Port & Base Screws: Nickel plated brass



WatsonSmith



PGC: 170	Description	Operation	Air Consumption (l/min)	Weight (kg)	Price
R27-200-RNCG	Standard Regulator	Handwheel 2.5 - 3 turns	0.3	0.72	£129.73
R27-200-RNFG	Standard Regulator	Handwheel 2.5 - 3 turns	0.6	0.72	£129.73
R27-200-RNLG	Standard Regulator	Handwheel 2.5 - 3 turns	1.2	0.72	£129.73



NORGREN

Valve Accessories

Pilot Valve Operators

3/2 Angle Seat Pilot Valve Operator

For Buschjost 84500 & 84520 Series

BSPF Thread (ISO G)



PGC: 170	Port Size	Voltage	Maximum Fluid Pressure (bar)	Orifice / DN (mm)	Price
8466000.1901.02400	G1/4	24 V DC	10	1.6	£47.29



Electrical Connectors

Electrical Connector

For Herion 95000 Series



- Basic plug Form A

PGC: 170	Price
570275	£1.59

Silencers

Bronze Silencer

For Herion 26230 NAMUR Series



PGC: 170	Price
T40C2800	£5.21

Electrical Connector

For Herion 97100 & 26230 NAMUR Series



- Basic plug Form B
- Not required for Herion 26230 NAMUR Series ATEX valve

PGC: 170	Price
0680003 0000 00000	£4.18

Metric Connectors for Pressure Switches

Connector M12 x 1

90° 4m Cable, 4-Core
For Norgren 18 D & 33 L Series



- For use with both mechanical and electrical Norgren pressure switches

PGC: 170	Price
523053	£20.59



- Inherently fail-safe
- Dynamic self-monitoring
- No residual pressure
- Large exhaust capacity
- World-wide Safety Approvals



**NORGREN
HERION**

Valves for Safety Applications

12





Butterfly Valves

Pro-Butty — Wafer

PN10/16

EPDM Liner



Temperature Range:
-10°C to +110°C



- Wafer pattern butterfly valve
- Ductile iron body
- Stainless steel shaft
- 316 stainless steel disc

PGC: 258	Size (")	Price
BFV32-W-EPDM	2	£128.48
BFV40-W-EPDM	2 1/2	£157.29
BFV48-W-EPDM	3	£177.54
BFV64-W-EPDM	4	£286.45
BFV80-W-EPDM	5	£394.58
BFV96-W-EPDM	6	£477.73
BFV128-W-EPDM	8	£816.91
BFV160-W-EPDM	10	£1307.39
BFV192-W-EPDM	12	£2026.93
BFV224-W-EPDM	14	£2416.69

Pro-Butty — Lugged & Tapped

PN10/16

EPDM Liner



Temperature Range:
-10°C to +110°C



- Lugged and tapped butterfly valve
- Ductile iron body
- Stainless steel shaft
- 316 stainless steel disc

PGC: 258	Size (")	Price
BFV32-LT-EPDM	2	£139.56
BFV40-LT-EPDM	2 1/2	£163.82
BFV48-LT-EPDM	3	£189.57
BFV64-LT-EPDM	4	£320.04
BFV80-LT-EPDM	5	£430.91
BFV96-LT-EPDM	6	£524.67
BFV128-LT-EPDM	8	£874.19
BFV160-LT-EPDM	10	£1404.98
BFV192-LT-EPDM	12	£2101.08
BFV224-LT-EPDM	14	£2548.21

Pro-Butty — Wafer

PN10/16

BUNA Liner



Temperature Range:
-10°C to +82°C



- Wafer pattern butterfly valve
- Ductile iron body
- Stainless steel shaft
- 316 stainless steel disc

PGC: 258	Size (")	Price
BFV32-W-BUNA	2	£128.48
BFV40-W-BUNA	2 1/2	£157.29
BFV48-W-BUNA	3	£177.54
BFV64-W-BUNA	4	£286.45
BFV80-W-BUNA	5	£394.58
BFV96-W-BUNA	6	£477.73
BFV128-W-BUNA	8	£816.91
BFV160-W-BUNA	10	£1307.39
BFV192-W-BUNA	12	£2026.93
BFV224-W-BUNA	14	£2416.69

Pro-Butty — Lugged & Tapped

PN10/16

BUNA Liner



Temperature Range:
-10°C to +82°C



- Lugged and tapped butterfly valve
- Ductile iron body
- Stainless steel shaft
- 316 stainless steel disc

PGC: 258	Size (")	Price
BFV32-LT-BUNA	2	£139.56
BFV40-LT-BUNA	2 1/2	£163.82
BFV48-LT-BUNA	3	£189.57
BFV64-LT-BUNA	4	£320.04
BFV80-LT-BUNA	5	£430.91
BFV96-LT-BUNA	6	£524.67
BFV128-LT-BUNA	8	£874.19
BFV160-LT-BUNA	10	£1404.98
BFV192-LT-BUNA	12	£2101.08
BFV224-LT-BUNA	14	£2548.21



Process Valves

VIP Co-Axial Valve



Temperature Range:
-20°C to +80°C



Working Pressure:
4.2 bar to 8 bar
(61 psi to 116 psi)



- Normally closed
- Namur interface
- Full bore but not full flow
- Low air consumption
- No external moving parts
- Very long working life
- Double acting and normally open valves available on request
- Can be used as an alternative to an actuated ball valve

PGC: 267	BSP	Price
VNC10003	3/8	£99.36
VNC10004	1/2	£110.28
VNC10005	3/4	£124.88
VNC10006	1	£144.93
VNC10007	1 1/4	£169.52
VNC10008	1 1/2	£208.70
VNC10009	2	£249.31

Angle Seat Valve

Stainless Steel



Temperature Range:
-10°C to +180°C



Working Pressure:
0 bar to 16 bar
(0 psi to 232 psi);
Steam: from +180°C
from 0 bar to 10 bar
(0 psi to 145 psi)



- Normally closed bidirectional
- Flow from below the hole to avoid water hammer
- Namur interface
- Female threads to ISO 228/1 and ISO 7/1
- Operating media: air, water, alcohol, oil, petrol and steam

PGC: 267	BSP	Price
ASV-J4SPG1603	3/8	£242.23
ASV-J4SPG1604	1/2	£242.23
ASV-J4SPG1605	3/4	£254.13
ASV-J4SPG1806	1	£318.98
ASV-J4SPG2107	1 1/4	£499.06
ASV-J4SPG2108	1 1/2	£590.45
ASV-J4SPG2309	2	£820.77

Angle Seat Valve

Bronze



Temperature Range:
-10°C to +180°C



Working Pressure:
0 bar to 16 bar
(0 psi to 232 psi);
Steam: from +180°C
from 0 bar to 10 bar
(0 psi to 145 psi)



- Normally closed bidirectional
- Flow from below the hole to avoid water hammer
- Namur interface
- Female Threads to ISO 228/1 and ISO 7/1
- Operating media: air, water, alcohol, oil, petrol and steam

PGC: 267	BSP	Price
ASV-J9SPG1603	3/8	£161.78
ASV-J9SPG1604	1/2	£242.23
ASV-J9SPG1605	3/4	£170.04
ASV-J9SPG1806	1	£204.75
ASV-J9SPG2107	1 1/4	£333.64
ASV-J9SPG2108	1 1/2	£377.50
ASV-J9SPG2309	2	£820.77

Actuated Ball Valve

Single Acting Spring Return



Temperature Range:
-20°C to +150°C



Working Pressure:
16 bar (232 psi)
up to +40°C



Valve Features

- Brass nickel plated body
- Full Bore

Actuator Features

- 90° rotation angle
- Temperature from 0°C to +80°C
- Air Supply: 5.6 bar (80 psi)
- Maximum Working Supply: 8.4 bar (120 psi)
- Operating Media: dry, filtered compressed air not necessarily lubricated, but must be compatible with NBR seals

PGC: 266	BSP	Price
S100H003	3/8	£129.76
S100H004	1/2	£131.04
S100H005	3/4	£150.97
S100H006	1	£169.62
S100H007	1 1/4	£230.48
S100H008	1 1/2	£260.15
S100H009	2	£275.82

Actuated Ball Valve

Double Acting



Temperature Range:
-20°C to +150°C



Working Pressure:
16 bar (232 psi)
up to +40°C



Valve Features

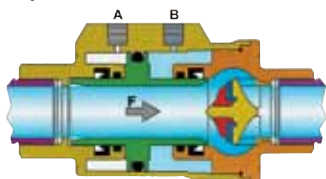
- Brass nickel plated body
- Full Bore

Actuator Features

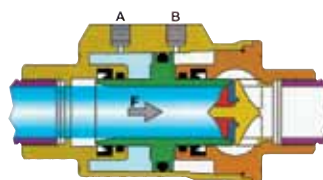
- 90° rotation angle
- Temperature from 0°C to +80°C
- Air Supply: 5.6 bar (80 psi)
- Maximum Working Supply: 8.4 bar (120 psi)
- Operating Media: dry, filtered compressed air not necessarily lubricated, but must be compatible with NBR seals

PGC: 266	BSP	Price
D100H003	3/8	£115.86
D100H004	1/2	£123.73
D100H005	3/4	£130.47
D100H006	1	£146.93
D100H007	1 1/4	£163.44
D100H008	1 1/2	£178.76
D100H009	2	£191.64

Open Valve



Closed Valve



Supplying air through hole B will open the valve, when the supply is shut off the spring in the chamber A (not shown) will close the valve.



Solenoid Valves

L182 General Purpose Solenoid Valve 2/2 N/C

Pilot Operated



Temperature Range:
-10°C to +140°C



Operating Pressure:
3/8 to 1": 0.35 bar to 12 bar;
1 1/4 to 2": 0.5 bar to 10 bar



- 2/2 normally closed
- For general purpose use
- WRAS approved
- DIN Plug sold separately



PGC: 265	BSPP	Coil Voltage	Pressure Rating (bar)	Orifice (mm)	Replacement Coil	Price
L182D01-3/8-2450	3/8	24/50	0.35 - 16	13.5	ZB10A- 2450	£89.20
L182D01-3/8-110	3/8	110/50	0.35 - 16	13.5	ZB10A- 110	£89.20
L182D01-3/8-230	3/8	230/50	0.35 - 16	13.5	ZB10A-230	£89.20
L182D01-3/8-24	3/8	24v DC	0.35 - 16	13.5	ZB10A-24	£89.20
L182D01-1/2-2450	1/2	24/50	0.35 - 16	13.5	ZB10A- 2450	£93.48
L182D01-1/2-230	1/2	110/50	0.35 - 16	13.5	ZB10A- 110	£93.48
L182D01-1/2-110	1/2	230/50	0.35 - 16	13.5	ZB10A-230	£93.48
L182D01-1/2-24	1/2	24v DC	0.35 - 16	13.5	ZB10A-24	£93.48
L182D01-3/4-2450	3/4	24/50	0.35 - 12	18	ZB10A- 2450	£118.33
L182D01-3/4-230	3/4	110/50	0.35 - 12	18	ZB10A- 110	£118.33
L182D01-3/4-110	3/4	230/50	0.35 - 12	18	ZB10A-230	£118.33
L182D01-3/4-24	3/4	24v DC	0.35 - 12	18	ZB10A-24	£118.33
L182D01-1-2450	1"	24/50	0.35 - 12	24	ZB10A- 2450	£180.54
L182D01-1-230	1"	110/50	0.35 - 12	24	ZB10A- 110	£180.54
L182D01-1-110	1"	230/50	0.35 - 12	24	ZB10A-230	£180.54
L182D01-1-24	1"	24v DC	0.35 - 12	24	ZB10A-24	£180.54

L180 General Purpose Solenoid Valve 2/2 N/C

Pilot Operated



Temperature Range:
-10°C to +140°C



Operating Pressure:
3/8 to 1": 0.35 bar to 12 bar;
1 1/4 to 2": 0.5 bar to 10 bar



- 2/2 normally closed
- For general purpose use
- WRAS approved
- DIN Plug sold separately



PGC: 265	BSPP	Coil Voltage	Pressure Rating (bar)	Orifice (mm)	Replacement Coil	Price
L180B48-11/2-2450	1 1/2	24/50	0.5 - 10	45	ZA30A-241C	£363.09
L180B48-11/2-110	1 1/2	110/50	0.5 - 10	45	ZA30A-100	£363.09
L180B48-11/2-230	1 1/2	230/50	0.5 - 10	45	ZA30A-230	£363.09
L180B48-11/2-24	1 1/2	24v DC	0.5 - 10	45	ZA30A-24	£363.09
L180B48-2-2450	2"	24/50	0.5 - 10	45	ZA30A-241C	£423.34
L180B48-2-110	2"	110/50	0.5 - 10	45	ZA30A-100	£423.34
L180B48-2-230	2"	230/50	0.5 - 10	45	ZA30A-230	£423.34
L180B48-2-24	2"	24v DC	0.5 - 10	45	ZA30A-24	£423.34

L282 General Purpose Solenoid Valve 2/2 N/C

Pilot Operated



Temperature Range:
-10°C to +140°C

Operating Pressure:
3/8 to 1": 0.35 bar to 12 bar;
1 1/4 to 2": 0.5 bar to 10 bar

WRAS
APPROVED
PRODUCT



**DIN Plug
sold
separately**



- 2/2 normally closed
- For general purpose use
- WRAS approved
- DIN Plug sold separately

PGC: 265	BSPP	Coil Voltage	Pressure Rating (bar)	Orifice (mm)	Replacement Coil	Price
L282B01-3/8-2450	3/8	24/50	0.35 - 12	13.5	ZB10A-2450	£111.88
L282B01-3/8-110	3/8	110/50	0.35 - 12	13.5	ZB10A-110	£111.88
L282B01-3/8-230	3/8	230/50	0.35 - 12	13.5	ZB10A-230	£111.88
L282B01-3/8-24	3/8	24v DC	0.35 - 12	13.5	ZB10A-24	£111.88
L282B01-1/2-2450	1/2	24/50	0.35 - 12	13.5	ZB10A-2450	£113.55
L282B01-1/2-110	1/2	110/50	0.35 - 12	13.5	ZB10A-110	£113.55
L282B01-1/2-230	1/2	230/50	0.35 - 12	13.5	ZB10A-230	£113.55
L282B01-1/2-24	1/2	24v DC	0.35 - 12	13.5	ZB10A-24	£113.55
L282B01-3/4-2450	3/4	24/50	0.35 - 12	18	ZB10A-2450	£142.98
L282B01-3/4-110	3/4	110/50	0.35 - 12	18	ZB10A-110	£142.98
L282B01-3/4-230	3/4	230/50	0.35 - 12	18	ZB10A-230	£142.98
L282B01-3/4-24	3/4	24v DC	0.35 - 12	18	ZB10A-24	£142.98
L282B01-1-2450	1"	24/50	0.35 - 12	24	ZB10A-2450	£197.23
L282B01-1-110	1"	110/50	0.35 - 12	24	ZB10A-110	£197.23
L282B01-1-230	1"	230/50	0.35 - 12	24	ZB10A-230	£197.23
L282B01-1-24	1"	24v DC	0.35 - 12	24	ZB10A-24	£197.23

L280 General Purpose Solenoid Valve 2/2 N/C

Pilot Operated



Temperature Range:
-10°C to +140°C

Operating Pressure:
3/8 to 1": 0.35 bar to 12 bar;
1 1/4 to 2": 0.5 bar to 10 bar

WRAS
APPROVED
PRODUCT



**DIN Plug
sold
separately**



- 2/2 normally closed
- For general purpose use
- WRAS approved
- DIN Plug sold separately

PGC: 265	BSPP	Coil Voltage	Pressure Rating (bar)	Orifice (mm)	Replacement Coil	Price
L280B48-11/2-2450	1 1/2	24/50	0.5 - 10	45	ZA30A-24AC	£402.21
L280B48-11/2-110	1 1/2	110/50	0.5 - 10	45	ZA30A-110	£402.21
L280B48-11/2-230	1 1/2	230/50	0.5 - 10	45	ZA30A-230	£402.21
L280B48-11/2-24	1 1/2	24v DC	0.5 - 10	45	ZA30A-24	£402.21
L280B48-2-2450	2"	24/50	0.5 - 10	45	ZA30A-24AC	£454.19
L280B48-2-110	2"	110/50	0.5 - 10	45	ZA30A-110	£454.19
L280B48-2-230	2"	230/50	0.5 - 10	45	ZA30A-230	£454.19
L280B48-2-24	2"	24v DC	0.5 - 10	45	ZA30A-24	£454.19

12

L321 General Purpose Solenoid Valve 3/2 N/C

Direct Acting



Temperature Range:
-10°C +90°C (NBR)
0°C +130°C (FFPM)

Operating Pressure:
0 - 10 bar
0 - 145psi



**DIN Plug
sold
separately**



- 3/2 Direct Acting Solenoid Valve
- Normally Closed
- DIN Plug sold separately
- 1/4 BSPP Port Connections

PGC: 265	BSPP	Coil Voltage	Pressure Rating (bar)	Orifice (mm)	Replacement Coil	Price
L321B02-1/4-2450	24/50		0 - 10	1.6	ZA30A-2450	£75.90
L321B02-1/4-110	110/50		0 - 10	1.6	ZA30A-110	£68.92
L321B02-1/4-230	230/50		0 - 10	1.6	ZA30A-230	£68.92
L321B02-1/4-24	24v DC		0 - 10	1.6	ZA30A-24	£68.92



L372 General Purpose Solenoid Valve 3/2 N/C

Direct Acting



Temperature Range:
0°C +130°C



Operating Pressure:
0 - 10 bar
0 - 145psi

- 3/2 Direct Acting Solenoid Valve
- Normally Closed
- DIN Plug sold separately
- 1/8 BSPP Port Connections



**DIN Plug
sold
separately**



PGC: 265	BSPP	Coil Voltage	Pressure Rating (bar)	Orifice (mm)	Replacement Coil	Price
L372V03-1/8-2450	1/8	24/50	0 - 10	1.6	ZB10A-2450	£58.72
L372V03-1/8-110	1/8	110/50	0 - 10	1.6	ZB10A-110	£58.72
L372V03-1/8-230	1/8	230/50	0 - 10	1.6	ZB10A-230	£58.72
L372V03-1/8-24	1/8	24v DC	0 - 10	1.6	ZB10A-24	£58.72

L172 General Purpose Solenoid Valve 2/2 N/C

Stainless Steel Direct Acting



Temperature Range:
0°C to +130°C



Operating Pressure:
0 - 15 bar
0 - 210 psi

- 2/2 Direct Acting Solenoid Valve
- Normally Closed
- DIN Plug sold separately
- 1/8 BSPP Port Connections



**DIN Plug
sold
separately**



PGC: 265	BSPP	Coil Voltage	Pressure Rating (bar)	Orifice (mm)	Replacement Coil	Price
L172V07-1/8-2450	1/8	24/50	0 - 20	1.6	ZB12A-2450	£81.81
L172V07-1/8-11050	1/8	110/50	0 - 20	1.6	ZB12A-110	£81.81
L172V07-1/8-23050	1/8	230/50	0 - 20	1.6	ZB12A-230	£81.81
L172V07-1/8-24	1/8	24v DC	0 - 12	1.6	ZB12A-24	£81.81

L176 General Purpose Solenoid Valve 2/2 N/C

Stainless Steel Direct Acting



Temperature Range:
0°C to +130°C



Operating Pressure:
0 - 15 bar
0 - 210 psi

- 2/2 Direct Acting Solenoid Valve
- Normally Closed
- Stainless Steel
- DIN Plug sold separately



**DIN Plug
sold
separately**



PGC: 265	BSPP	Coil Voltage	Pressure Rating (bar)	Orifice (mm)	Replacement Coil	Price
L176V07-1/4-2450	1/4	24/50	2 - 15	2.4	ZC12A-2450	£112.13
L176V07-1/4-11050	1/4	110/50	2 - 15	2.4	ZC12A-110	£112.13
L176V07-1/4-23050	1/4	230/50	2 - 15	2.4	ZC12A-230	£112.13
L176V07-1/4-24	1/4	24v DC	2 - 15	2.4	ZC12A-24	£112.13

L172 General Purpose Solenoid Valve 2/2 N/C

Direct Acting



Temperature Range:
0°C to +130°C



Operating Pressure:
0 - 15 bar
0 - 210 psi

- 2/2 Direct Acting Solenoid Valve
- Normally Closed
- DIN Plug sold separately
- 1/8 BSPP Port Connections



**DIN Plug
sold
separately**



PGC: 265	BSPP	Coil Voltage	Pressure Rating (bar)	Orifice (mm)	Replacement Coil	Price
L172V03-1/8-2450	1/8	24/50	0 - 15	2	ZB10A-2450	£50.51
L172V03-1/8-110	1/8	110/50	0 - 15	2	ZB10A-110	£50.51
L172V03-1/8-230	1/8	230/50	0 - 15	2	ZB10A-230	£50.51
L172V03-1/8-24	1/8	24v DC	0 - 6	2	ZB10A-24	£50.51

L133 General Purpose Solenoid Valve 2/2 N/C

Direct Acting



Temperature Range:
-10°C +90°C (NBR)
0°C +130°C (FPM)



Operating Pressure:
0 - 15 bar
0 - 210 psi



**DIN Plug
sold
separately**



- 2/2 Direct Acting Solenoid Valve
- Normally Closed
- DIN Plug sold separately
- 1/4 BSPP Port Connections

PGC: 265	BSPP	Coil Voltage	Pressure Rating (bar)	Orifice (mm)	Replacement Coil	Price
L133B01-3/8-2450	3/8	24/50	0 - 10	24	Z923E-2450	£79.65
L133B01-3/8-110	3/8	110/50	0 - 10	24	Z923E-110	£79.65
L133B01-3/8-230	3/8	230/50	0 - 10	24	Z923E-230	£84.66
L133B01-3/8-24	3/8	24v DC	0 - 10	24	Z923E-24	£84.66

L133 General Purpose Solenoid Valve 2/2 N/C

Direct Acting



Temperature Range:
-10°C +90°C (NBR)
0°C +130°C (FPM)



Operating Pressure:
0 - 15 bar
0 - 210psi
0 - 3 bar
0 - 43psi



**DIN Plug
sold
separately**



- 2/2 Direct Acting Solenoid Valve
- Normally Closed
- DIN Plug sold separately
- 1/4 BSPP Port Connections

PGC: 265	BSPP	Coil Voltage	Pressure Rating (bar)	Orifice (mm)	Replacement Coil	Price
L133B07-1/2-2450	1/2	24/50	0 - 10	12.5	Z130A-2450	£111.69
L133B07-1/2-110	1/2	110/50	0 - 10	12.5	Z130A-110	£111.69
L133B07-1/2-230	1/2	230/50	0 - 10	12.5	Z130A-50	£111.69
L133B07-1/2-24	1/2	24v DC	0-3	12.5	Z130A-24	£111.69
L133B07-3/4-2450	3/4	24/50	0 - 10	17	Z130A-2450	£106.18
L133B07-3/4-110	3/4	110/50	0 - 10	17	Z130A-110	£106.18
L133B07-3/4-230	3/4	230/50	0 - 10	17	Z130A-50	£143.34
L133B07-3/4-24	3/4	24v DC	0 - 3	17	Z130A-24	£143.34

L133 General Purpose Solenoid Valve 2/2 N/C

Direct Acting



Temperature Range:
-10°C +90°C (NBR)
0°C +130°C (FPM)



Operating Pressure:
0 - 15 bar
0 - 210psi
0 - 3 bar
0 - 43psi



**DIN Plug
sold
separately**



- 2/2 Direct Acting Solenoid Valve
- Normally Closed
- DIN Plug sold separately
- 1/4 BSPP Port Connections

PGC: 265	BSPP	Coil Voltage	Pressure Rating (bar)	Orifice (mm)	Replacement Coil	Price
L133B06-1-2450	1"	24/50	0 - 10	24	Z923E-2450	£157.90
L133B06-1-110	1"	110/50	0 - 10	24	Z923E-110	£227.35
L133B06-1-230	1"	230/50	0 - 10	24	Z923E-230	£126.90
L133B06-1-24	1"	24v DC	0-3	24	Z923E-24	£227.35



L182 General Purpose Solenoid Valve 2/2 N/C

Stainless Steel
Direct Acting



Temperature Range:
-10°C +90°C (NBR)
0°C +130°C (FPM)
-10°C +140°C (EPDM)



Operating Pressure:
0 - 35 bar
0 - 500 psi



- 2/2 Direct Acting Solenoid Valve
- Normally Closed
- Stainless Steel
- DIN Plug sold separately

PGC: 265	BSPP	Coil Voltage	Pressure Rating (bar)	Orifice (mm)	Replacement Coil	Price
L182V09-3/8-2450	3/8	24/50	0.35 - 16	13.5	ZB12A-2450	£308.31
L182V09-3/8-11050	3/8	110/50	0.35 - 16	13.5	ZB12A-110	£323.96
L182V09-3/8-23050	3/8	230/50	0.35 - 16	13.5	ZB12A-230	£323.96
L182V09-3/8-24	3/8	24v DC	0.35 - 16	13.5	ZB12A-24	£308.31
L182V09-1/2-2450	1/2	24/50	0.35 - 16	13.5	ZB12A-2450	£323.96
L182V09-1/2-11050	1/2	110/50	0.35 - 16	13.5	ZB12A-110	£323.96
L182V09-1/2-23050	1/2	230/50	0.35 - 16	13.5	ZB12A-230	£398.57
L182V09-1/2-24	1/2	24v DC	0.35 - 16	13.5	ZB12A-24	£323.96
L182V09-3/4-2450	3/4	24/50	0.35 - 16	18	ZB12A-2450	£323.96
L182V09-3/4-11050	3/4	110/50	0.35 - 16	18	ZB12A-110	£398.57
L182V09-3/4-23050	3/4	230/50	0.35 - 16	18	ZB12A-230	£398.57
L182V09-3/4-24	3/4	24v DC	0.35 - 16	18	ZB12A-24	£323.96
L182V09-1-2450	1"	24/50	0.35 - 16	24	ZB12A-2450	£480.72
L182V09-1-11050	1"	110/50	0.35 - 16	24	ZB12A-110	£363.34
L182V09-1-23050	1"	230/50	0.35 - 16	24	ZB12A-230	£363.34
L182V09-1-24	1"	24v DC	0.35 - 16	24	ZB12A-24	£480.72

L282 General Purpose Solenoid Valve 2/2 N/C

Stainless Steel
Direct Acting



Temperature Range:
-10°C +90°C (NBR)
0°C +130°C (FPM)



Operating Pressure:
0.35 - 16 bar
5 - 232 psi



- 2/2 Direct Acting Solenoid Valve
- Normally Closed
- Stainless Steel
- DIN Plug sold separately

PGC: 265	BSPP	Coil Voltage	Pressure Rating (bar)	Orifice (mm)	Replacement Coil	Price
L282V09-3/8-2450	3/8	24/50	0.35 - 16	13.5	ZB12A-2450	£363.34
L282V09-3/8-11050	3/8	110/50	0.35 - 16	13.5	ZB12A-110	£363.34
L282V09-3/8-23050	3/8	230/50	0.35 - 16	13.5	ZB12A-230	£363.34
L282V09-3/8-24	3/8	24v DC	0.35 - 16	13.5	ZB12A-24	£363.34
L282V09-1/2-2450	1/2	24/50	0.35 - 16	13.5	ZB12A-2450	£392.72
L282V09-1/2-11050	1/2	110/50	0.35 - 16	13.5	ZB12A-110	£392.72
L282V09-1/2-23050	1/2	230/50	0.35 - 16	13.5	ZB12A-230	£392.72
L282V09-1/2-24	1/2	24v DC	0.35 - 16	13.5	ZB12A-24	£392.72
L282V09-3/4-2450	3/4	24/50	0.35 - 16	18	ZB12A-2450	£476.69
L282V09-3/4-11050	3/4	110/50	0.35 - 16	18	ZB12A-110	£476.69
L282V09-3/4-23050	3/4	230/50	0.35 - 16	18	ZB12A-230	£476.69
L282V09-3/4-24	3/4	24v DC	0.35 - 16	18	ZB12A-24	£476.69
L282V09-1-2450	1"	24/50	0.35 - 16	24	ZB12A-2450	£569.11
L282V09-1-11050	1"	110/50	0.35 - 16	24	ZB12A-110	£569.11
L282V09-1-23050	1"	230/50	0.35 - 16	24	ZB12A-230	£569.11
L282V09-1-24	1"	24v DC	0.35 - 16	24	ZB12A-24	£569.11

L153 Steam & Hot Water Solenoid Valve 2/2 N/C

Direct Acting



Temperature Range:
-10°C +150°C)



Operating Pressure:
0.3 - 4.5 bar
4.3 - 65 psi



- 2/2 Direct Acting Solenoid Valve
- Normally Closed
- DIN Plug sold separately
- For Steam and Hot Water Applications

PGC: 265	BSPP	Coil Voltage	Pressure Rating (bar)	Orifice (mm)	Replacement Coil	Price
L153D07-1/2-110	1/2	110/50	0.3 - 4.5	11.5	Z914A-110	£139.79
L153D07-1/2-230	1/2	230/50	0.3 - 4.5	11.5	Z914A-230	£188.71
L153D07-1/2-24	1/2	24v DC	0.3 - 4.5	11.5	Z914A-24	£139.79
L153D07-3/4-110	1"	110/50	0.3 - 4.5	11.5	Z914A-110	£163.32
L153D07-3/4-230	1"	230/50	0.3 - 4.5	11.5	Z914A-230	£220.51
L153D07-3/4-24	1"	24v DC	0.3 - 4.5	11.5	Z914A-24	£163.32
L153D5-1-110	3/4	110/50	0.3 - 4.5	11.5	Z134A-110	£236.25
L153D5-1-230	3/4	230/50	0.3 - 4.5	11.5	Z134A-230	£163.32
L153D5-1-24	3/4	24v DC	0.3 - 4.5	11.5	Z134A-24	£236.25

L145 Steam & Hot Water Solenoid Valve 2/2 N/C

Pilot Operated



Temperature Range:
0°C +130°C



Operating Pressure:
0.4 - 6 bar
5 - 86 psi



- 2/2 Direct Acting Solenoid Valve
- Normally Closed
- DIN Plug sold separately
- For Steam and Hot Water Applications

PGC: 265	BSPP	Coil Voltage	Pressure Rating (bar)	Orifice (mm)	Replacement Coil	Price
L145R2-1/2-110	1/2	110/50	0.4 - 8	10	Z614A-110	£119.37
L145R2-1/2-230	1/2	230/50	0.4 - 8	10	Z614A-230	£126.90
L145R2-1/2-24	1/2	24v DC	0.4 - 8	10	Z614A-24	£119.37
L145R2-1-110	1"	110/50	0.4 - 6	18.5	Z534A-110	£230.50
L145R2-1-230	1"	230/50	0.4 - 6	18.5	Z534A-230	£216.13
L145R2-1-24	1"	24v DC	0.4 - 6	18.5	Z534A-24	£230.50
L145R4-3/4-110	3/4	110/50	0.4 - 6	16	Z534A-110	£144.71
L145R4-3/4-230	3/4	230/50	0.4 - 6	16	Z534A-230	£154.36
L145R4-3/4-24	3/4	24v DC	0.4 - 6	16	Z534A-24	£154.36



Replacement Plugs & Coils

DIN Plug

For Solenoid Valves



PGC: 265	Price
PLUG-122	£2.03
PLUG-182	£2.14

ZA30A Replacement Coil



Working Temperature:
-10°C to +50°C

- Replacement Coil for Sirai® Solenoid Valves
- The DIN plug to suit this coil is part number: PLUG-182

PGC: 265	Price
ZA30A-24AC	£35.09
ZA30A-110	£35.09
ZA30A-230	£35.09
ZA30A-24	£35.09

ZA10A Replacement Coil



Working Temperature:
-10°C to +60°C

- Replacement Coil for Sirai® Solenoid Valves
- The DIN plug to suit this coil is part number: PLUG-182

PGC: 265	Price
ZB10A-110	£32.10
ZB10A-230	£32.10
ZB10A-24	£32.10

Z530A Replacement Coil



Working Temperature:
-10°C to +60°C

- Replacement Coil for Sirai® Solenoid Valves
- The DIN plug for this coil is: PLUG-182

PGC: 265	Price
Z530A-110	£44.78
Z530A-230	£59.18
Z530A-24	£44.78

Z130A Replacement Coil



Working Temperature:
-10°C to +60°C

- Replacement Coil for Sirai® Solenoid Valves
- The DIN plug for this coil is: PLUG-182

PGC: 265	Price
Z130A-110	£59.18
Z130A-230	£59.18
Z130A-24	£59.18

Z923E Replacement Coil



Working Temperature:
-10°C to +60°C

- Replacement Coil for Sirai® Solenoid Valves
- The DIN plug for this coil is: PLUG-182

PGC: 265	Price
Z923E-110	£87.02
Z923E-230	£87.02
Z923A-24	£87.02

Z614A Replacement Coil



Working Temperature:
-10°C to +80°C

- Replacement Coil for Sirai® Solenoid Valves
- The DIN plug for this coil is: PLUG-122

PGC: 265	Price
Z614A-110	£41.03
Z614A-230	£41.03
Z614A-24	£41.03

Z534A Replacement Coil



Working Temperature:
-10°C to +80°C

- Replacement Coil for Sirai® Solenoid Valves
- The DIN plug for this coil is: PLUG-122

PGC: 265	Price
Z534A-110	£57.60
Z534A-230	£57.60
Z534A-24	£57.60

Z134E Replacement Coil



Working Temperature:
-10°C to +80°C

- Replacement Coil for Sirai® Solenoid Valves
- The DIN plug for this coil is: PLUG-182

PGC: 265	Price
Z134A-110	£70.76
Z134A-230	£70.76
Z134A-24	£87.02

Z610A Replacement Coil



Working Temperature:
-10°C to +60°C

- Replacement Coil for Sirai® Solenoid Valves
- The DIN plug for this coil is: PLUG-122

PGC: 265	Price
Z610A-110	£35.09
Z610A-230	£35.09
Z610A-24	£35.09

Z914A Replacement Coil



Working Temperature:
-10°C to +80°C

- Replacement Coil for Sirai® Solenoid Valves
- The DIN plug for this coil is: PLUG-122

PGC: 265	Price
Z914A-110	£101.98
Z914A-230	£101.98
Z914A-24	£101.98

FESTO



PROCESS RANGE

12

NOW AVAILABLE



MHA ZENTGRAF
FlowControl Technology

High Pressure Valves

MHA Zentgraf is one of Europe's leading manufacturers of ball and flow control valves for use with high pressure hydraulic applications. The MHA range of valves has a proven track record for ultra-high pressure applications up to 800 bar (11,600 psi). Ball valve performance to the highest standards has been achieved and is maintained by using superior quality MHA specified materials.

In order to provide the many advantages of ball valves in high temperature applications, MHA has developed the MKHT series of ball valves. These valves are designed with a gland packing of special material. This sealing allows applications with high pressure and simultaneously high temperatures. MHA shut-off valves are designed to function safely in extreme conditions providing:

- Stainless steel and carbon steel construction
- Secure operation
- Reliable sealing in shut-off position and to the outside



MHA Zentgraf is certified according to the Pressure Equipment Directive (CE) and DIN EN ISO 9001 : 2000. MHA-Protect is a galvanic Chromium-VI free surface plating.



Temperature Range:
-20°C to +100°C



Working Pressure:
6-18mm OD
500 bar (7250 psi)
22-42mm OD
350 bar (5075 psi)

2-Way Ball Valves

2-Way Ball Valve

BKH Series
DIN 2353 Light



- Carbon steel
- Brass ball
- NBR seal
- POM seat ball

PGC: 253	OD (mm)	Price
BV6LHPS	6	£25.26
BV8LHPS	8	£24.62
BV10LHPS	10	£25.43
BV12LHPS	12	£25.93
BV15LHPS	15	£29.06
BV18LHPS	18	£29.89
BV22LHPS	22	£59.43
BV28LHPS	28	£78.58
BV35LHPS	35	£78.58
BV42LHPS	42	£174.47

2-Way Ball Valve

Body Only
BKH Series
DIN 2353 Light



- Carbon steel
- Brass ball
- NBR seal
- POM seat ball

PGC: 253	OD (mm)	Price
XBV6LHPS	6	£23.63
XBV8LHPS	8	£22.95
XBV10LHPS	10	£23.54
XBV12LHPS	12	£23.56
XBV15LHPS	15	£26.06
XBV18LHPS	18	£24.92
XBV22LHPS	22	£52.64
XBV28LHPS	28	£67.26
XBV35LHPS	35	£63.57
XBV42LHPS	42	£151.74

2-Way Ball Valve

BKH Series
DIN 2353 Heavy



- Carbon steel
- Brass ball
- NBR seal
- POM Seat ball

PGC: 253	OD (mm)	Price
BV8SHPS	8	£27.57
BV10SHPS	10	£26.75
BV12SHPS	12	£24.62
BV14SHPS	14	£29.89
BV16SHPS	16	£29.06
BV20SHPS	20	£39.46
BV25SHPS	25	£58.11
BV30SHPS	30	£76.60
BV38SHPS	38	£92.77

2-Way Ball Valve

Body Only
BKH Series
DIN 2353 Heavy



- Carbon steel
- Brass ball
- NBR seal
- POM seat ball

PGC: 253	OD (mm)	Price
XBV8SHPS	8	£25.64
XBV10SHPS	10	£24.43
XBV12SHPS	12	£21.92
XBV14SHPS	14	£25.53
XBV16SHPS	16	£23.78
XBV20SHPS	20	£31.97
XBV25SHPS	25	£45.22
XBV30SHPS	30	£60.61
XBV38SHPS	38	£69.66

Multiway Ball Valves

2-Way Ball Valve

BKH Series
Female Thread BSPP



- Stainless steel
- Steel ball
- NBR seal
- POM seat ball

PGC: 253	BSPP	Working Pressure (bar)	Price
BV2HPS-SS	1/8	500	£242.82
BV4HPS-SS	1/4	500	£165.79
BV6HPS-SS	3/8	500	£176.06
BV8HPS-SS	1/2	500	£193.49
BV12HPS-SS	3/4	315	£374.86
BV16HPS-SS	1	315	£407.33
BV20HPS-SS	1 1/4	315	£511.29
BV24HPS-SS	1 1/2	315	£809.67

2-Way Ball Valve

BKH Series
Female Thread NPT



- Carbon steel
- Brass ball
- NBR seal
- POM seat ball

PGC: 253	NPT	Working Pressure (bar)	Price
BV4HPS-NPT	1/4	500	£23.39
BV6HPS-NPT	3/8	500	£24.90
BV8HPS-NPT	1/2	500	£27.88
BV12HPS-NPT	3/4	400	£58.17
BV16HPS-NPT	1	350	£72.86
BV20HPS-NPT	1 1/4	315	£88.29
BV24HPS-NPT	1 1/2	315	£105.23

3-Way Ball Valve

3KH Series L Port
Female Thread BSPP



- Carbon steel
- Steel ball
- NBR seal
- POM seat ball



PGC: 253	BSPP	Working Pressure (bar)	Price
BV2HPS-3KH-L	1/8	500	£253.82
BV4HPS-3KH-L	1/4	500	£253.82
BV6HPS-3KH-L	3/8	500	£296.55
BV8HPS-3KH-L	1/2	400	£399.61
BV12HPS-3KH-L	3/4	315	£685.89
BV16HPS-3KH-L	1	315	£789.86
BV20HPS-3KH-L	1 1/4	315	£956.57
BV24HPS-3KH-L	1 1/2	250	£1045.87

2-Way Ball Valve

BKH Series
Female Thread BSPP



- Carbon steel
- Brass ball
- NBR seal
- POM seat ball
- 1 1/4" & 1 1/2" BSPP are DN25 reduced bore

PGC: 253	BSPP	Working Pressure (bar)	Price
BV2HPS	1/8	500	£28.24
BV4HPS	1/4	500	£19.00
BV6HPS	3/8	500	£21.80
BV8HPS	1/2	500	£23.78
BV12HPS	3/4	315	£44.41
BV16HPS	1	315	£59.43
BV20HPS	1 1/4	315	£75.93
BV24HPS	1 1/2	315	£84.19

2-Way Ball Valve

MKH Series
Female Thread BSPP



- Carbon steel
- Steel ball
- NBR seal
- POM seat ball

PGC: 253	BSPP	Working Pressure (bar)	Price
BV20FB-HPS	1 1/4	420	£185.20
BV24FB-HPS	1 1/2	420	£288.03
BV32FB-HPS	2	420	£336.23

3-Way Ball Valve

3KH Series T Port
Female Thread BSPP



- Carbon steel
- Steel ball
- NBR seal
- POM seat ball



PGC: 253	BSPP	Working Pressure (bar)	Price
BV2HPS-3KH-T	1/8	500	£282.81
BV4HPS-3KH-T	1/4	500	£282.81
BV6HPS-3KH-T	3/8	500	£326.25
BV8HPS-3KH-T	1/2	400	£439.41
BV12HPS-3KH-T	3/4	315	£754.47
BV16HPS-3KH-T	1	315	£868.90
BV20HPS-3KH-T	1 1/4	315	£1052.29
BV24HPS-3KH-T	1 1/2	250	£1150.40

4-Way Ball Valve

4KH Series T Port
Female Thread BSPP



T Bore

- Carbon steel
- Steel ball
- NBR seal
- POM seat ball



PGC: 253	BSPP	Working Pressure (bar)	Price
BV2HPS-4KH-T	1/8	500	£282.81
BV4HPS-4KH-T	1/4	500	£326.25
BV6HPS-4KH-T	3/8	500	£326.25
BV8HPS-4KH-T	1/2	400	£439.41
BV12HPS-4KH-T	3/4	315	£754.47
BV16HPS-4KH-T	1	315	£868.90
BV20HPS-4KH-T	1 1/4	315	£1052.29
BV24HPS-4KH-T	1 1/2	250	£1150.40

4-Way Ball Valve

4KH Series X Port
Female Thread BSPP



X Bore

- Carbon steel
- Steel ball
- NBR seal
- POM seat ball



PGC: 253	BSPP	Working Pressure (bar)	Price
BV2HPS-4KH-X	1/8	500	£253.82
BV4HPS-4KH-X	1/4	500	£253.82
BV6HPS-4KH-X	3/8	500	£296.55
BV8HPS-4KH-X	1/2	400	£399.61
BV12HPS-4KH-X	3/4	315	£685.89
BV16HPS-4KH-X	1	315	£789.86
BV20HPS-4KH-X	1 1/4	315	£956.57
BV24HPS-4KH-X	1 1/2	250	£1045.87

3-Way Diverters

3-Way Diverter

BK3 Series T Port
Female Thread BSPP



- Pressure inlet only from middle port
- Carbon steel
- Steel ball
- NBR seal
- POM seat ball

PGC: 253	BSPP	Working Pressure (bar)	Price
BV4HPS-3T	1/4	500	£77.63
BV6HPS-3T	3/8	500	£101.03
BV8HPS-3T	1/2	500	£106.89
BV12HPS-3T	3/4	315	£228.52
BV16HPS-3T	1	315	£282.01

3-Way Diverter

BK3 Series L Port
Female Thread BSPP



- Pressure inlet only from middle port
- Carbon steel
- Steel ball
- NBR seal
- POM seat ball

PGC: 253	BSPP	Working Pressure (bar)	Price
BV4HPS-3L	1/4	500	£46.72
BV6HPS-3L	3/8	500	£46.72
BV8HPS-3L	1/2	500	£54.48
BV12HPS-3L	3/4	315	£97.23
BV16HPS-3L	1	315	£120.50
BV20HPS-3L	1 1/4	315	£396.96
BV24HPS-3L	1 1/2	250	£698.01
BV32HPS-3L	2	250	£930.72

Applications in hydraulics for:

- Construction industry
- Agricultural machinery,
- Construction industry
- Water engineering,
- Mining industry and
- Paint industry.



Temperature Range:
-20°C to +120°C



Working Pressure:
315 bar (4500 psi) to
500 bar (7252 psi)
according to BSPP/
NPT
(listed in below)

Hydraulic Ball Valves

Hydraulic Ball Valve

Female Thread BSPP



- Carbon steel body
- Carbon steel ball
- NBR seal
- POM seat ball

PGC: 253	BSPP	Working Pressure (bar)	Price
HBV1/4	1/4	500	£14.10
HBV3/8	3/8	500	£17.45
HBV1/2	1/2	500	£20.00
HBV3/4	3/4	315	£34.55
HBV1	1	315	£47.90
HBV1 1/4	1 1/4	315	£87.00
HBV1 1/2	1 1/2	315	£124.55

Hydraulic Ball Valve

Female Thread NPT



- Carbon steel body
- Carbon steel ball
- NBR seal
- POM seat ball

PGC: 253	NPT	Working Pressure (bar)	Price
HBV1/4N	1/4	500	£14.10
HBV3/8N	3/8	500	£17.45
HBV1/2N	1/2	500	£20.00
HBV3/4N	3/4	315	£34.55
HBV1N	1	315	£47.90
HBV1 1/4N	1 1/4	315	£87.00
HBV1 1/2N	1 1/2	315	£124.55



MHA ZENTGRAF
FlowControl Technology

Flow Control Valves

Needle Valves

NDRV Series

- Single acting
- Flow control with free reverse flow

NDV Series

- Double acting
- Flow control and shut-off



Temperature Range:
-20°C to +100°C



Working Pressure:
350 bar (5076 psi)



Needle Valve NDRV Series

NBR Seal
Female Thread BSPP



- Single acting
- Flow control with free reverse flow
- Stainless steel with nylon control knob

PGC: 253	BSPP	Max. Flow (lpm)	Max. Rev. Flow (lpm)	Price
FCV2-NDVR-SS	1/8	10	15	£265.76
FCV4-NDVR-SS	1/4	50	70	£193.22
FCV6-NDVR-SS	3/8	75	100	£242.07
FCV8-NDVR-SS	1/2	140	150	£285.33
FCV12-NDVR-SS	3/4	175	200	£411.70
FCV16-NDVR-SS	1	350	275	£798.09
FCV20-NDVR-SS	1 1/4	350	400	£616.05
FCV24-NDVR-SS	1 1/2	350	520	£698.84
FCV32-NDVR-SS	2	350	600	£764.50

Needle Valve NDV Series

NBR Seal
Female Thread BSPP



- Double acting
- Flow control and shut-off valve
- Stainless steel with nylon control knob

PGC: 253	BSPP	Max. Flow (lpm)	Price
FCV2-NDV-SS	1/8	10	£193.62
FCV4-NDV-SS	1/4	50	£185.14
FCV6-NDV-SS	3/8	75	£192.70
FCV8-NDV-SS	1/2	140	£197.29
FCV12-NDV-SS	3/4	175	£286.15
FCV16-NDV-SS	1	350	£571.46
FCV20-NDV-SS	1 1/4	350	£981.63
FCV24-NDV-SS	1 1/2	350	£1071.55

12

Needle Valve NDRV Series

NBR Seal
Female Thread BSPP



- Single acting
- Flow control with free reverse flow
- Carbon steel with nylon control knob

PGC: 253	BSPP	Max. Flow (lpm)	Max. Rev. Flow (lpm)	Price
FCV2-NDVR	1/8	10	15	£111.26
FCV4-NDVR	1/4	50	70	£45.96
FCV6-NDVR	3/8	75	100	£51.33
FCV8-NDVR	1/2	140	150	£68.73
FCV12-NDVR	3/4	175	200	£121.86
FCV16-NDVR	1	350	275	£293.23
FCV20-NDVR	1 1/4	350	400	£346.74
FCV24-NDVR	1 1/2	350	520	£455.80
FCV32-NDVR	2	350	600	£612.60

Needle Valve NDV Series

NBR Seal
Female Thread BSPP



- Double acting
- Flow control and shut-off valve
- Carbon steel with nylon control knob

PGC: 253	BSPP	Max. Flow (lpm)	Price
FCV2-NDV	1/8	10	£101.43
FCV4-NDV	1/4	50	£36.36
FCV6-NDV	3/8	75	£36.91
FCV8-NDV	1/2	140	£43.75
FCV12-NDV	3/4	175	£102.67
FCV16-NDV	1	350	£220.74
FCV20-NDV	1 1/4	350	£309.99
FCV24-NDV	1 1/2	350	£342.57

H-99 Screwed Bonnet Needle Valves

*Quality
you can trust.*



12

H-99 Series Needle Valve

Female Thread NPT



Temperature Range:
-51°C to +232°C

Working Pressure:
Max. 680 bar
(10,000 psi)

- General service H-99 Series NPT needle valve
- All valves have a regulating stem
- Different stems available on request

PGC: 240	NPT	Working Pressure (psi)	Price
H-99-SS-N-R-1/4-V-SS	1/4	10000	£65.82
H-99-SS-N-R-3/8-V-SS	3/8	8000	£68.04
H-99-SS-N-R-1/2-V-SS	1/2	6000	£70.82

FEATURES

- Blow-out Proof Stem
- MAWP up to 10,000 psi (690 bar)
- MAWT up to 600°C (1112°F)
- Size range: 1/4" to 1" or 6 mm to 25 mm

GENERAL

The H-99 & H-99HP Series offers a general-service valve of rugged design and construction. It is available in stainless steel to suit a wide range of services.

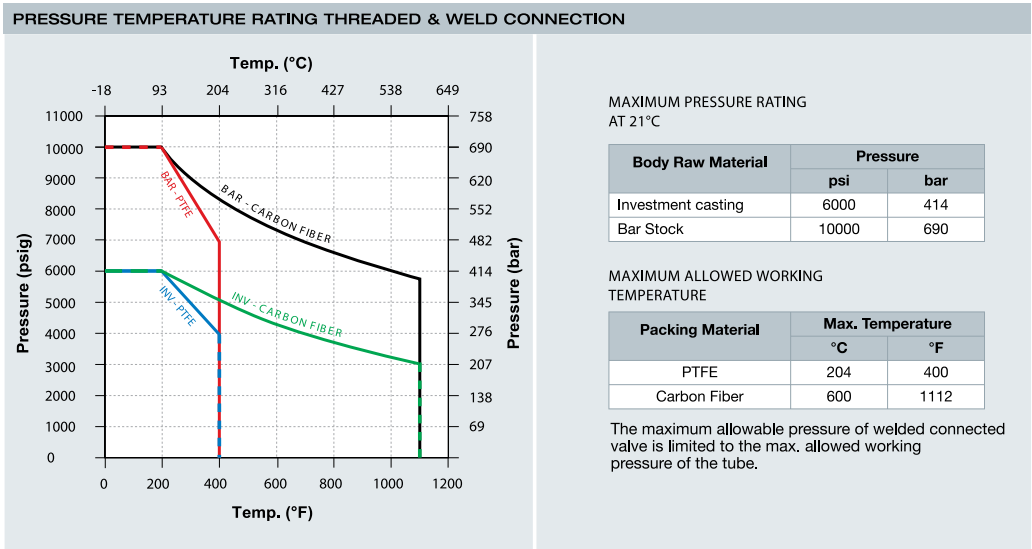
Capable of withstanding high pressures (10,000 psi maximum) and high temperature. This valve is typically used in a severe environment, high pressure sampling systems, high pressure shut-down systems and test stands.

TREATING & PACKAGING

HAM-LET H-99 & H-99HP Needle Valves are treated with HAM-LET Passivation Cleaning and Packaging (Procedure 8075).

Special Cleaning for Oxygen service is available upon request.

PRESSURE TEMPERATURE RATING



TREATING & PACKAGING

The H-99 & H-99HP Series Needle Valve designs have been tested for Proof and Burst. Every H-99 & H-99HP Needle Valve is factory tested with Nitrogen at 1000 psi (69 bar). The maximum allowable leakage across seat is 0.1 std cc/min.

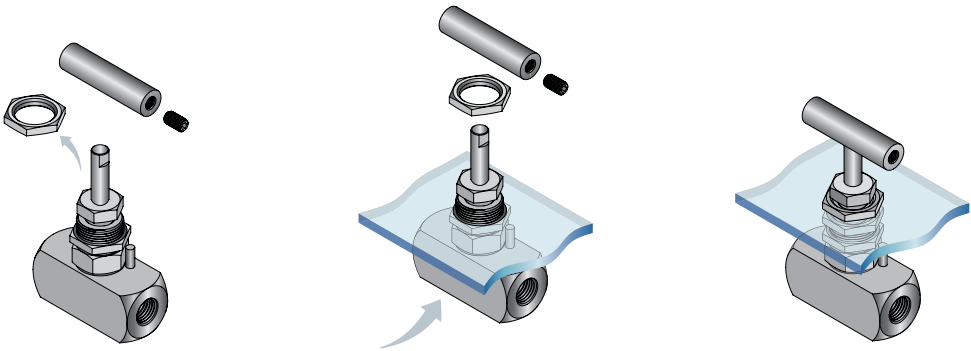
PACKING ADJUSTMENT

Designed to suit a wide range of services, the H99 Series is capable of withstanding high pressures of 10,000 psi (680 bar) maximum.

Applications include:

- Corrosive service
- High-pressure sampling systems
- High-pressure shut-down systems

EASY MOUNTING PROCEDURE



1. Disassemble the handle, using an appropriate hex key. Take off the upper panel nut. Set the lower panel nut into the desired place to determine mounting height.
2. Insert the valve into the panel hole and reassemble the upper panel nut. Firmly tighten the upper nut.
3. Reassemble the handle. Firmly tighten the hex screw.

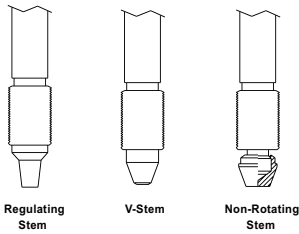
ALTERNATIVE STEMS

HAM-LET Needle Valves are available with a choice of stem-tip options to allow greater flexibility.

Regulating: Used where some degree of flow control is required.

V-Stem: A standard stem tip used for general-purpose liquids and gases.

Non-Rotating: Typically used in high-cycle applications to extend valve life. It is designed to prevent galling between the seat and stem.



H-300U Integral Bonnet Needle Valves

*Quality
you can trust.*



H-300U SERIES

The H-300U Series is an advanced high pressure instrumentation needle valve for shut-off service, its packing bolt design for easy mounting being the best solution for instrumentation panels. This compact valve enables relatively high level of flow regulation and long-life service.

Special stem surface treatment, based on low temperature carbon diffusion, enables higher surface hardness with improved wear resistance, resistance to system contaminations and optimal operational torque.

H-300U Series Needle Valve

Straight LET-LOK®



Temperature Range:
-46°C to +230°C

Working Pressure:
Max. 340 bar
(5000 psi)

- LET-LOK® ended
- 316 stainless steel
- All valves have a regulating stem and PTFE packing
- Different stems and packing available on request
- Round plastic handle

PGC: 240	OD (")	Price
H-300-SS-L-R-1/4-RS	1/4	£50.51
H-300-SS-L-R-3/8-RS	3/8	£69.98
H-300-SS-L-R-1/2-RS	1/2	£72.41

H-300U Series Needle Valve

Straight LET-LOK®



Temperature Range:
-46°C to +230°C

Working Pressure:
Max. 340 bar
(5000 psi)

- LET-LOK® ended
- 316 stainless steel
- All valves have a regulating stem and PTFE packing
- Different stems and packing available on request
- Metal handle

PGC: 240	OD	Price
H-300-SS-L-R-1/4-M	1/4"	£58.07
H-300-SS-L-R-3/8-M	3/8"	£80.46
H-300-SS-L-R-1/2-M	1/2"	£83.26
H-300-SS-L-R-6-M	6 mm	£58.07
H-300-SS-L-R-10-M	10 mm	£80.46
H-300-SS-L-R-12-M	12 mm	£83.26

H-300U SERIES FEATURES

- Straight and angle pattern
- Stainless steel and brass construction
- MAWP 5000 psi (345 bar), MAWT 230°C (446°F)
- Flow coefficient (Cv) 0.09 to 1.8
- Sizes: 1/8" to 3/4" (3 mm - 12 mm)
- Round plastic, round aluminum, and metal bar handles
- Variety of stem types
- Packing bolt for easy panel mounting, no packing disassembling is required
- Chevron stem packing provides lowest operation torques Belleville washers to compensate packing wear
- Special synthetic, anti-seize stem lubricant for best resistance to hot media

CLEANING & PACKAGING

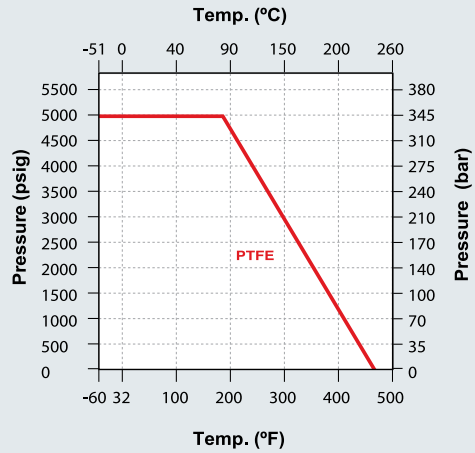
HAM-LET H-300U Needle Valve is treated with Passivation Cleaning and Packaging (Procedure 8075). Oxygen Cleaning and Packaging (Procedure 8055) is available as an option.

TESTING

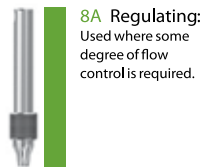
The H-300U Series Needle Valve design has been tested for Proof and Burst. Every H-300U Needle Valve is factory tested with nitrogen at 1000 psi (69 bar). The maximum allowable leakage across seat is 0.1 std cc/min.

PRESSURE TEMPERATURE RATING

H-300U PRESSURE TEMPERATURE RATING



Spare Round-Handle Kits are available for each valve



8A Regulating:
Used where some degree of flow control is required.



8B V-Stem:
Standard stem tip used for on/off operation in general-purpose liquids and gas service.

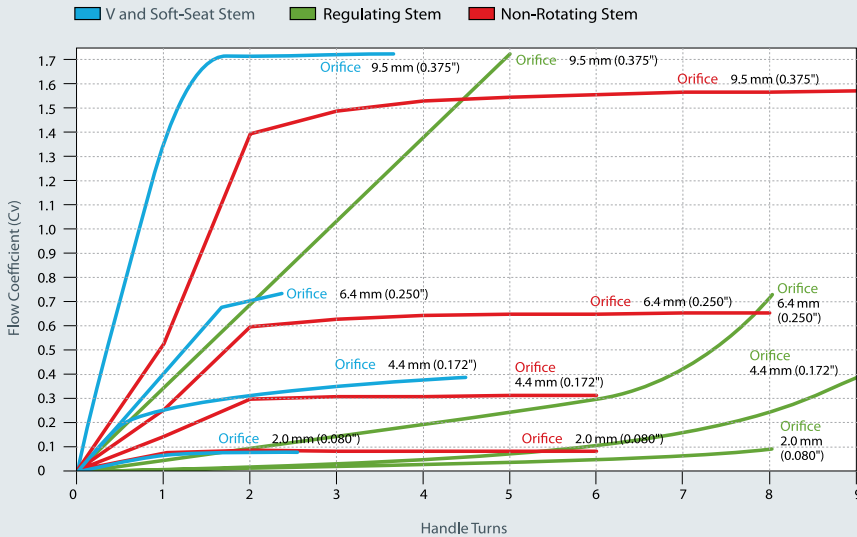


8C Non-Rotating Stem:
Typically used in high-cycle applications to extend valve life and prevent stem rotation inside the body tip, a suitable selection for gaseous high pressure applications.

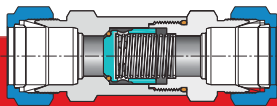


8D Soft Seat:
A soft seat tip requires lower seating torque than a metal stem tip; the best choice for clean gaseous high pressure applications; MAWT is 93°C (200°F).

FLOW DATA: FLOW COEFFICIENT VS. HANDLE TURNS



H-400 Check Valves



*Quality
you can trust.*



GENERAL

The H-400 Series is a compact design for instrumentation panels and systems, which provides an accurate operating point. H-400 valves are normally closed. When differential pressure between inlet and outlet is higher than the set pressure of the spring, the loaded poppet will move backwards and will enable a free passage of flow through the valve.

FEATURES

- 316 Stainless Steel and Brass construction
- Moderate Pressure Characteristics (up to 3000 psi)
- Compact Design
- Variable fixed cracking-pressure springs
- HAM-LET LET-LOK®, Male & Female NPT, and HTC® Face-Seal Bead Ends.

CLEANING & PACKAGING

HAM-LET H-400 valves are treated with HAM-LET Passivation, Cleaning and Packaging (Procedure 8075). HAM-LET H-400 Valves with face seal end connections are treated with HAM-LET Oxygen Cleaning and Packaging (Procedure 8055). Oxygen cleaning and packaging for other end connections are available as an option.

TESTING

The H-400 valve designs have been tested for Proof and Burst. Every H-400 valve is factory tested for proper assembly, by leakage detection at 1000 psig (68 bar) for 10 seconds.

Every H-400 valve is factory tested for functionality at the relevant cracking pressure, 5 cycles each.

H-400 Series Check Valve

Straight LET-LOK®



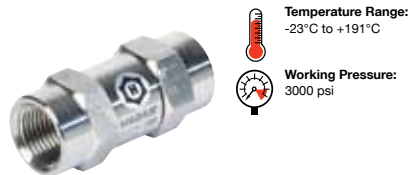
- LET-LOK® ended
- 1/3 psi cracking pressure
- Other cracking pressures available on request

PGC: 240	OD	Price
H-400-SS-L-1/4-1/3	1/4"	£39.08
H-400-SS-L-3/8-1/3	3/8"	£76.07
H-400-SS-L-1/2-1/3	1/2"	£82.63
H-400-SS-L-6-1/3	6 mm	£38.53
H-400-SS-L-10-1/3	10 mm	£76.07
H-400-SS-L-12-1/3	12 mm	£82.63

H-410 Series Check Valve

Female Thread NPT

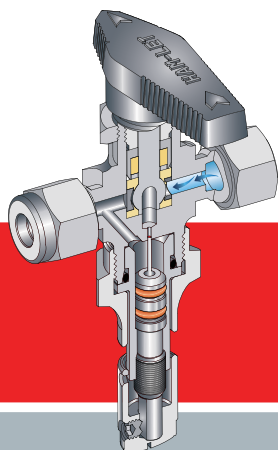
3000 psi



- 1/3 psi cracking pressure
- Other cracking pressures available on request

PGC: 240	NPT	Price
H-410-SS-N-1/4-1/3	1/4"	£38.53
H-410-SS-N-3/8-1/3	3/8"	£80.04
H-410-SS-N-1/2-1/3	1/2"	£82.63

Fine Metering & Shut-Off Control Units



METERING BALL VALVE MBV

*Quality
you can trust.*

**Best
Process Control**
Less potential leak points
Less Installation Time
& Labour



Pat. Pending No. 61/376,682

MBV SERIES

The Shut-Off Metering Ball Valve Series delivers industry's highest degree of accurate metering flow for moderate pressure applications.

The MBV series features an innovative and unique shut off capability which allows full control of the process from extra fine regulation to a complete valve shut off. The choice of three precision stem tapers enables metering at flow capacities as low as $C_v=0.0001$ with up to 11 handle turns, the MBV series meets the high demand of precise flow control.

With the option of five O-ring materials the MBV series provides the best temperature and chemical coverage, making it ideal for the Oil & Gas analysing industries.

MBV FEATURES

- On/Off and Metering control
- PFA Encapsulated Ball Stem designed for leak tight shut off service
- Panel Mounting as standard
- Maximum Allowable Working Pressure: 2000 psi (138 bar) for all MBV types
- Maximum Allowable Working Temperature: 150°C (300°F)
- End Connection type options: Let-Lok, One-Lok, threaded and Male Face Seal
- Stem Taper: 1°, 3° and 5° for different flow control regulations
- Five different O-ring materials are available as options
- Actuated On/Off operation is available
- Three optional handle types:
 - Round Aluminum handle
 - Metal slotted handle
 - Vernier handle

MBV Metering Ball Valve



Maximum Temperature:
+150°C

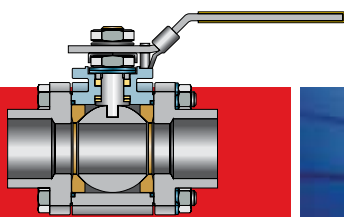


Maximum Working Pressure:
2000 psi (138 bar)



PGC: 240	OD (")	Price
MBV-H-00-SS-L-1/4	1/4	£121.36

H-500 Series 3-Piece Stainless Steel Ball Valves



*Quality
you can trust.*



Maximum Working Temperature:
+232°C



Maximum Working Pressure:
204 bar (3000 psi)

H-500 SERIES

The H-500 Series is a moderate-pressure instrumentation ball valve for general service and instrumentation panels. The valves offer large ports for high flow, tight shutoff, long-life service and low operating torque.

The H-500 Series can be used for bi-directional flow, is rated to a maximum 204 bar (3000 psi) and performs on/off service.

12

H-500 FEATURES

3-piece heavy-duty ball valves with:

- Precision investment cast body in CF8M stainless steel
- Precision investment cast end caps in CF3M stainless steel
- Blow-out proof stem with Belleville washer design for long life stem sealing
- Manual operation with integral locking device
- Flow coefficient (Cv) from 1.2 to 24.0

H-500S is available with TFM1600 seat material as standard. Please contact the Sales Team for further details.

H-500 Series

Moderate Pressure
Ball Valve



- LET-LOK® ended
- PTFE seat
- Three-piece compact ball valve

PGC: 240	OD (")	Price
H-500-SS-L-1/4	1/4	£85.07
H-500-SS-L-3/8	3/8	£93.93
H-500-SS-L-1/2	1/2	£94.52
H-500-SS-L-3/4	3/4	£119.73
H-500-SS-L-1	1	£178.96

H-510 Series

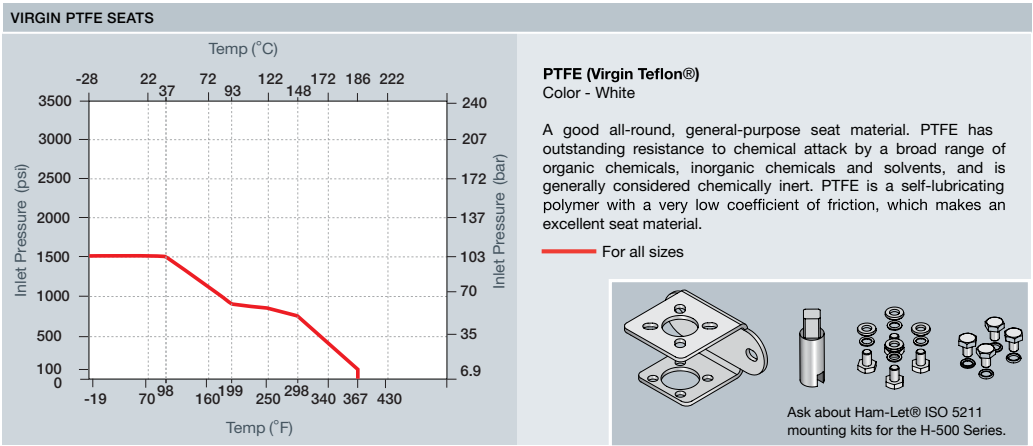
Moderate Pressure
Ball Valve



- PTFE seat
- Three-piece compact ball valve

PGC: 240	NPT	Price
H-510-SS-N-1/4	1/4	£76.58
H-510-SS-N-3/8	3/8	£84.55
H-510-SS-N-1/2	1/2	£85.07
H-510-SS-N-3/4	3/4	£107.76
H-510-SS-N-1	1	£161.07

PRESSURE TEMPERATURE RATING



ADDITIONAL CONFIGURATIONS

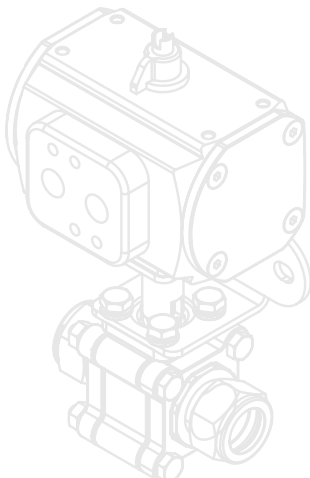


HAM-LET PNEUMATIC ACTUATORS



Small yet
Powerful.

12



ACTUATED H-500 FEATURES

- 90° actuation for 2-way valves
- Actuators comply with industry standards for interface with ISO 5211, NAMUR and VDI/VDE 3845
- Actuated valves are available factory assembled or separately, actuator and mounting kits
- Limit switches, proximity sensors, position indicators, pilot valves and other accessories are available upon request

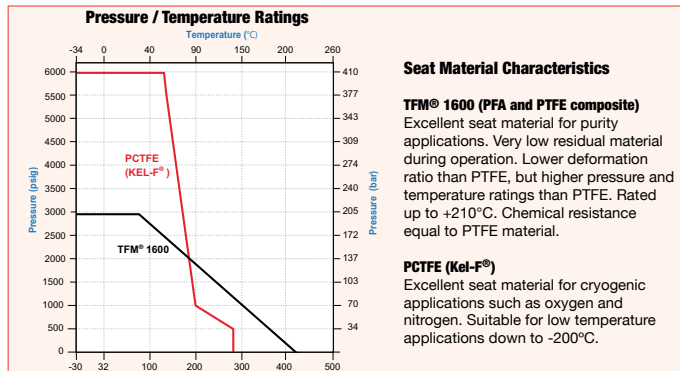
Standard Temperature Range:
-32°C to +90°C

Optional: High temperature, low temperature

High Performance Instrumentation Ball Valves

H-6800 SERIES

- Bi-directional flow
- Straight through flow path with minimal pressure drop
- Encapsulated seats for long life
- Low operating torque
- Handle indicates On / Off position
- Adjustable packing
- Double acting and spring return actuated



Straight Port Ball Valves

Straight Port Ball Valve

LET-LOK® ended
3000 psi



PGC: 240	OD	Price
H-6800-SS-L-1/4-PSS	1/4"	£65.48
H-6800-SS-L-3/8-PSS	3/8"	£97.51
H-6800-SS-L-1/2-PSS	1/2"	£142.41
H-6800-SS-L-6-PSS	6 mm	£65.48
H-6800-SS-L-10-PSS	10 mm	£97.51
H-6800-SS-L-12-PSS	12 mm	£142.41

Straight Port Ball Valve

LET-LOK® ended
6000 psi



PGC: 240	OD	Price
H-6800-SS-L-1/4-CSS	1/4"	£90.35
H-6800-SS-L-3/8-CSS	3/8"	£116.51
H-6800-SS-L-1/2-CSS	1/2"	£196.52
H-6800-SS-L-6-CSS	6 mm	£90.35
H-6800-SS-L-10-CSS	10 mm	£128.17
H-6800-SS-L-12-CSS	12 mm	£196.52

Temperature Range:
-26°C to +204°C



Working Pressure:
206 bar (3000 psi);
413 bar (6000 psi)



Straight Port Ball Valve

Female Thread NPT
3000 psi



PGC: 240	NPT	Price
H-6810-SS-N-1/4-PSS	1/4	£62.33
H-6810-SS-N-3/8-PSS	3/8	£105.95
H-6810-SS-N-1/2-PSS	1/2	£144.90

Straight Port Ball Valve

Female Thread NPT
6000 psi



PGC: 240	NPT	Price
H-6810-SS-N-1/4-CSS	1/4	£86.01
H-6810-SS-N-3/8-CSS	3/8	£121.84
H-6810-SS-N-1/2-CSS	1/2	£199.95

Straight Port Ball Valve

Male Thread NPT
6000 psi



PGC: 240	NPT	Price
H-6880-SS-N-1/4-CSS	1/4	£86.01
H-6880-SS-N-3/8-CSS	3/8	£146.19
H-6880-SS-N-1/2-CSS	1/2	£203.06

Angle Port Ball Valves

Angle Port Ball Valve

LET-LOK® ended
3000 psi



PGC: 240	OD	Price
H-6800-SS-L-1/4-PSA	1/4"	£75.62
H-6800-SS-L-3/8-PSA	3/8"	£107.89
H-6800-SS-L-1/2-PSA	1/2"	£161.12
H-6800-SS-L-6-PSA	6 mm	£75.62
H-6800-SS-L-10-PSA	10 mm	£110.63
H-6800-SS-L-12-PSA	12 mm	£164.48

Angle Port Ball Valve

LET-LOK® ended
6000 psi



PGC: 240	OD	Price
H-6800-SS-L-1/4-CSA	1/4"	£104.35
H-6800-SS-L-3/8-CSA	3/8"	£171.32
H-6800-SS-L-1/2-CSA	1/2"	£222.35
H-6800-SS-L-6-CSA	6 mm	£104.35
H-6800-SS-L-10-CSA	10 mm	£127.21
H-6800-SS-L-12-CSA	12 mm	£245.77

Angle Port Ball Valve

Female Thread NPT
6000 psi



PGC: 240	NPT	Price
H-6810-SS-N-1/4-CSA	1/4	£110.82
H-6810-SS-N-3/8-CSA	3/8	£168.11
H-6810-SS-N-1/2-CSA	1/2	£230.62

Angle Port Ball Valve

Male Thread NPT
3000 psi



PGC: 240	NPT	Price
H-6880-SS-N-1/4-PSA	1/4	£79.24
H-6880-SS-N-3/8-PSA	3/8	£121.82
H-6880-SS-N-1/2-PSA	1/2	POA

3 Port Ball Valve

Female Thread NPT
3000 psi



PGC: 240	NPT	Price
H-6810-SS-N-1/4-PST	1/4	£80.32
H-6810-SS-N-3/8-PST	3/8	£132.43
H-6810-SS-N-1/2-PST	1/2	£152.53

Angle Port Ball Valve

Male Thread NPT
6000 psi



PGC: 240	NPT	Price
H-6880-SS-N-1/4-CSA	1/4	£109.32
H-6880-SS-N-3/8-CSA	3/8	£168.11
H-6880-SS-N-1/2-CSA	1/2	POA

3 Port Ball Valve

Female Thread NPT
6000 psi



PGC: 240	NPT	Price
H-6810-SS-N-1/4-CST	1/4	£110.84
H-6810-SS-N-3/8-CST	3/8	£149.34
H-6810-SS-N-1/2-CST	1/2	£210.49

3 Port Ball Valves

3 Port Ball Valve

LET-LOK® ended
3000 psi



PGC: 240	OD	Price
H-6800-SS-L-1/4-PST	1/4"	£82.31
H-6800-SS-L-3/8-PST	3/8"	£116.09
H-6800-SS-L-1/2-PST	1/2"	£186.08
H-6800-SS-L-6-PST	6 mm	£82.31
H-6800-SS-L-10-PST	10 mm	£118.82
H-6800-SS-L-12-PST	12 mm	£186.08

3 Port Ball Valve

LET-LOK® ended
6000 psi



PGC: 240	OD	Price
H-6800-SS-L-1/4-CST	1/4"	£113.57
H-6800-SS-L-3/8-CST	3/8"	£149.78
H-6800-SS-L-1/2-CST	1/2"	£256.79
H-6800-SS-L-6-CST	6 mm	£113.57
H-6800-SS-L-10-CST	10 mm	£168.54
H-6800-SS-L-12-CST	12 mm	£256.78

3 Port Ball Valve

Male Thread NPT
6000 psi



PGC: 240	NPT	Price
H-6880-SS-N-1/4-CST	1/4	£107.50
H-6880-SS-N-3/8-CST	3/8	£182.74
H-6880-SS-N-1/2-CST	1/2	POA

H-6800 Handles & ISLT Locking Devices

H-6800 Series ball valves are available with a range of coloured handles for use in manual operation.



Black nylon handle with brass insert is standard.



PATENT PENDING
Integral Safety
LockOut-TagOut Device

ISLT - Locking Device AI6061 with anodised handle (stainless steel internal components).



The integral locking mechanism enables safe and easy-to-use solutions for valve position locking and tagging. The design prevents undesirable valve position changes, even if no locking equipment is used. Available for 2-way straight and angle pattern in locked-open and locked-closed positions. For 3-way pattern valves, the ISLT handle allows locking in left and right positions.

H-6800 Actuators

The H-6800 Series offers quarter-turn rack-and-pinion pneumatic actuators. The actuators are compact, lightweight, easy to mount, high cycle, and can be operated with standard, shop air pressure as Double Acting or Spring Return types. H-6800 actuators are compliant with the ISO 5211 Mounting Standard.

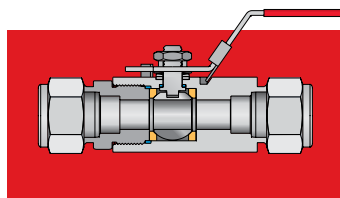


Single-Mounted Actuator



Dual-Mounted Actuator

H-700 Series 2-Piece Ball Valves



*Quality
you can trust.*



Maximum Working Temperature:
+204°C



Maximum Working Pressure:
135 bar (2000 psi)

H-700 SERIES

The H-700 Series is a moderate-pressure ball valve for general service. These valves are compact in size and structure. They have relatively large ports for high flow, tight shutoff, long-life service, and low operating torque.

The H-700 Series can be used for bi-directional flow in fully open or fully closed position only. The series is rated to a maximum 2000 psi (135 bar) and performs on/off service.

12

H-700 FEATURES

2-piece general duty ball valves with:

- Blow-out proof stem
- Stainless steel construction
- Locking handle in on and off positions
- Compliance with OSHA LOTO Standard 29 CFR Part 1910.147- Control of Hazardous Energy
- Flow coefficient (Cv) 1.25 to 17.35
- Size range: 1/4" to 1" or 6 mm to 25 mm

Lubricant: silicon-based grease for oxygen applications, according to HAM-LET Procedure 8055. Please contact the Sales Team for further details.

H-700 Series Ball Valve

With Locking Device



- LET-LOK® ended
- TFM® 1600 seat
- Padlock not included

PGC: 240	OD	Price
H-700-SS-L-1/4-T-LD	1/4"	£39.23
H-700-SS-L-3/8-T-LD	3/8"	£51.58
H-700-SS-L-1/2-T-LD	1/2"	£49.42
H-700-SS-L-6-T-LD	6 mm	£41.61
H-700-SS-L-10-T-LD	10 mm	£49.01
H-700-SS-L-12-T-LD	12 mm	£51.88

H-710 Series Ball Valve

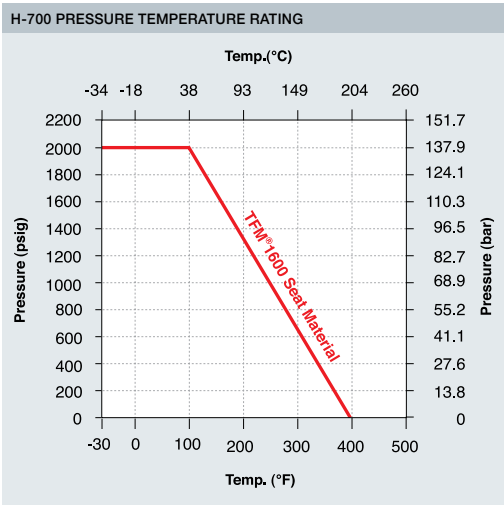
Female Thread NPT



- LET-LOK® ended
- Locking device

PGC: 240	NPT	Price
H-710-SS-N-1/4-R-LD	1/4	£25.10
H-710-SS-N-3/8-R-LD	3/8	£34.73
H-710-SS-N-1/2-R-LD	1/2	£30.67

PRESSURE TEMPERATURE RATING



CLEANING & PACKAGING

H-700 ball valve is treated with Ham-Let® Passivation Cleaning and Packaging (Procedure 8075). Ham-Let® H-700 ball valves with face seal end connections are treated with Oxygen Cleaning and Packaging (Procedure 8055).

TESTING

The H-700 Series ball valve designs have been tested for proof and burst. Every H-700 ball valve is factory tested with nitrogen at 1000 psi (69 bar). Maximum allowable leakage across seat is 0.1 std cc/min.

SEAT MATERIAL CHARACTERISTICS

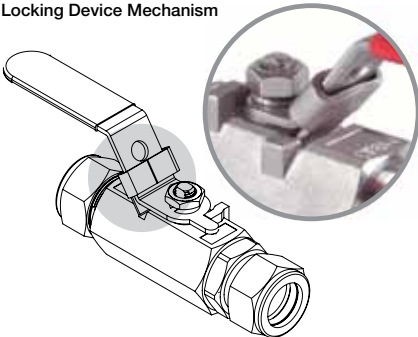
TFM®1600 - (PFA and PTFE composite) - Color: Bright White.

Excellent seat material for purity applications, very low residual material during operation. It has lower deformation ratio than PTFE, but higher pressure and temperature rating. Chemical resistance is equal to PTFE material.

PACKING ADJUSTMENT

Due to the varied service applications of the valve, packing adjustment may be occasionally necessary. Packing is factory adjusted to 1000 psi service. Initial packing adjustment is recommended after installation and prior to start-up. Please find more information on H-700 under installation instructions. Ham-Let® ball valves are designed to be operated in the fully closed or fully open position.

Locking Device Mechanism



HAM-LET® ADVANCED CONTROL TECHNOLOGY METERING VALVES



MBV SERIES see page 29

QCLOK®

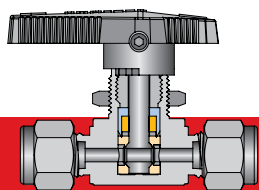
INSTRUMENTATION QUICK CONNECTORS



HAM-LET®
ADVANCED CONTROL TECHNOLOGY

see page 43

H-800 Series 1-Piece Ball Valves



*Quality
you can trust.*



Maximum Working Temperature:
+149°C



Maximum Working Pressure:
206 bar (3000 psi)

H-800 SERIES

The H-800 one-piece compact ball valve series is designed for general service and instrumentation panels. Valve design enables low and high working pressure and accommodates a wide temperature range with high life cycle. One-piece body design reduces possibility of shell leakage. The valves offer tight shutoff, long-life service and low operating torque.

H-800 ball valves are designed for fully open or fully closed operation only. After a period of non-operation, the braking torque of the valve may rise.

H-800 FEATURES

1-piece compact ball valves with:

- One-piece construction and single unit ball stem
- On/off service
- No dead volume at flow path
- Panel mount design and colour-coded handles
- Manual and pneumatic actuation

H-800 Series Ball Valve



- LET-LOK® ended
- One-piece compact ball valve

PGC: 240	OD	Price
H-800-SS-L-6	6 mm	£64.50
H-800-SS-L-1/8	1/8"	£62.29
H-800-SS-L-1/4	1/4"	£64.50

H-810 Series Ball Valve

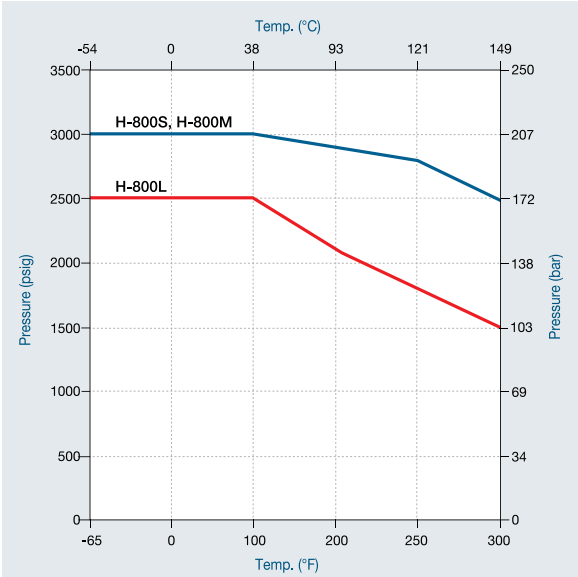


- NPT ended
- One-piece compact ball valve

PGC: 240	NPT	Price
H-810-SS-N-1/4	1/4	£75.27

PRESSURE TEMPERATURE RATING

H-800 PRESSURE TEMPERATURE RATING



H-800 COLORED AND METAL HANDLES



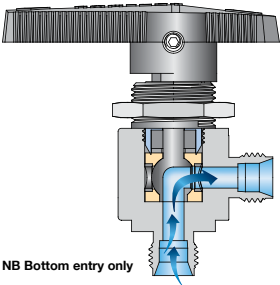
MANUAL OPERATION

- S - Black Handle*
- B - Blue Handle
- R - Red Handle
- G - Green Handle
- Y - Yellow Handle
- M - Metal Handle

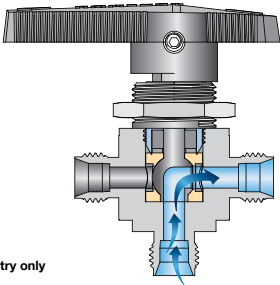
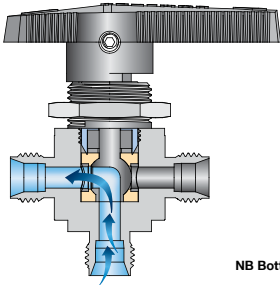
* Black Nylon handle is standard

FLOW DIRECTION

H-800 Angle-Type



H-800 T-Type



HAM-LET PNEUMATIC ACTUATORS



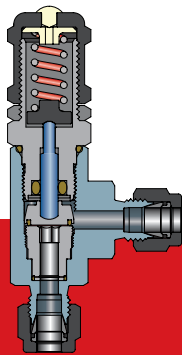
ACTUATED H-800 FEATURES

- 90° actuation for 2-way valves (straight and angle)
- 180° actuation for T-type valves
- Actuators comply with industry standards for interface with ISO 5211, NAMUR and VDI/VDE 3845
- Actuated valves are available factory assembled or separately, actuator and mounting kits
- Limit switches, proximity sensors, position indicators, pilot valves and other accessories are available upon request

Standard Temperature Range:
-32°C to +90°C

Optional: High temperature, low temperature

H-900 Relief Valves



*Quality
you can trust.*



12

GENERAL

- H-900 is available as CE/PED products
- 316 steel construction
- Service 10-225 psi
- One spring for all set pressure range
- Available in all pipe threads and LET-LOK® connectors
- Sizes: 1/4" or 6 mm

FEATURES

The H-900 series is a relief valve for low pressure service. The valve is normally closed. It will open when system pressure reaches the set level. It will re-close when the system pressure falls below the set level.

APPLICATIONS

H-900 relief valves gradually open when pressure increases. As such, they are not certified to ASME due to not having capacity rating at a given pressure rise (accumulation).

H-900 Series Relief Valve



Temperature Range:
-18°C to +121°C



Working Pressure:
1500 psi to 2250 psi

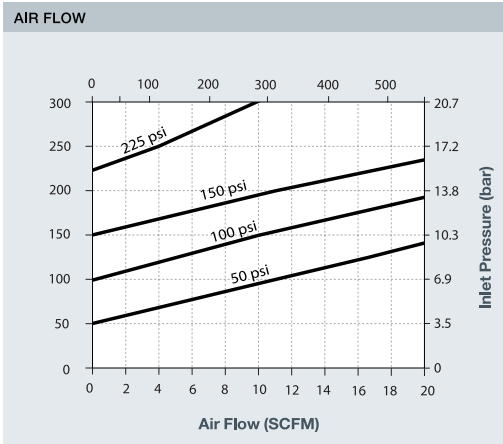
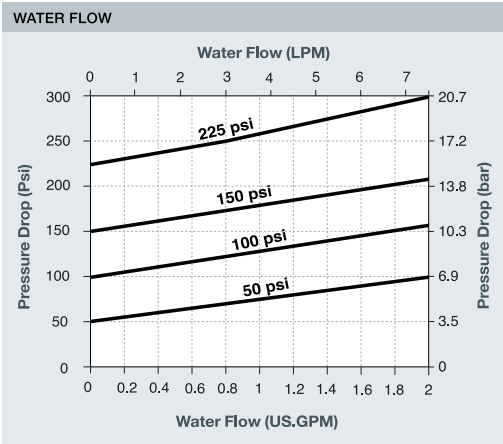


- LET-LOK® and NPT ended

PGC: 240	Inlet	Outlet	Price
H-900-HP-SS-L-1/4D	1/4" OD	1/4" OD	£103.86
H-900-HP-SS-L-6D	6 mm OD	6 mm OD	£103.86
H-995-HP-SS-NL-1/4D	1/4 NPT Male	1/4" OD	£138.34
H-985-HP-SS-N-1/4D	1/4 NPT Male	1/4 NPT Female	£123.47

FLOW DATA AT 20°C

Orifice in fully open mode is 4.8 mm.
Spring 10 - 225 psig



OPERATION

H-900 relief valves open when system pressure gets to the set pressure and close when system pressure drops below the set pressure.

Warnings In Valves that were not actuated for some time may contain pressure higher than the set pressure.

System designer and users shall determine what system applications require using relief valves to meet specific safety codes and which valves conform to such codes.

SETTING AND RESEALING PRESSURE

- Upstream set pressure is the first indicator of flow process. Every pressure relief after the first indication is repeatable within a deviation of 5% at room temperature
- Blocked upstream set pressure is the first indicator of a stopped flow process and is always lower than the set pressure
- Calculation of set pressure valve design demands back pressure consideration as the system back pressure increases the set pressure

To balance the system the back pressure must be multiplied by 0.8 and the result shall be subtracted from the required set pressure.

TESTING

The HAM-LET H-900 Relief Valve designs have been tested for Proof and Burst. Every H-900 Relief Valve is factory tested for proper set and resealing performance.

Spring Kits



Working Pressure Range:
50 psi up to 6000 psi
(see table below)



- For H-900 HP Series relief valves
- Includes spring and label

PGC: 240	Working Pressure (psi)	Colour	Letter	Price
Z-900-HP-SPK-1/4-A	50 - 350	White	A	£10.92
Z-900-HP-SPK-1/4-B	350 - 750	Blue	B	£10.92
Z-900-HP-SPK-1/4-C	750 - 1500	Gold	C	£10.92
Z-900-HP-SPK-1/4-D	1500 - 2250	Turquoise	D	£10.92
Z-900-HP-SPK-1/4-E	2250 - 3000	Green	E	£10.92
Z-900-HP-SPK-1/4-F	3000 - 4000	Red	F	£10.92
Z-900-HP-SPK-1/4-G	4000 - 5000	Silver	G	£10.92
Z-900-HP-SPK-1/4-H	5000 - 6000	Black	H	£10.92

Wade

Safety Relief Valves

High lift safety relief valves with atmospheric discharge (Series 6000, 6100) or side outlet discharge (Series 6200, 6300, 6500) suitable for air and inert gas applications.

The flow is de-rated and measured in accordance with BS EN ISO 4126-1 2004: 1984. The valve re-seats by minus 10% of set pressure. Compliant with the Pressure Equipment Directive (PED) (97/23/EC) and CE marked.

Series 6000 Safety Relief Valve



- Series 6000 high lift safety relief valve
- Atmospheric discharge with pull ring
- For use with compressed air cylinders and pressure vessels
- Suitable for dental or hospital sterilising equipment if fitted with a silicone rubber seat

PGC: 120	BSPT	Set Pressure (bar)	Price
6000/06/D/2.0	1/4	2	£25.01
6000/06/E/3.0	1/4	3	£25.01
6000/06/G/5.0	1/4	5	£25.01
6000/06/G/5.3	1/4	5.3	£25.01
6000/06/G/6.0	1/4	6	£25.01
6000/06/H/8.0	1/4	8	£25.01
6000/06/J/10.0	1/4	10	£25.01
6000/06/J/11.5	1/4	11.5	£25.01
6000/06/K/14.0	1/4	14	£33.59
6000/06/M/19.0	1/4	19	£33.59
6000/06/M/20.0	1/4	20	£33.59
6000/06/P/27.6	1/4	27.6	£33.59

Series 6100 Safety Relief Valve



- Series 6100 high lift safety relief valve
- Atmospheric discharge with easing lever
- For use on compressed air supply systems and pressure vessels

PGC: 120	BSPT	Set Pressure (bar)	Price
6100/06/G/5.5	1/4	5.5	£49.96
6100/06/J/11.0	1/4	11.0	£49.96
6100/10/J/11.0	3/8	11.0	£51.94
6100/15/G/5.5	1/2	5.5	£52.94
6100/15/H/9.0	1/2	9.0	£49.96
6100/15/J/11.0	1/2	11.0	£52.94
6100/20/J/11.0	3/4	11.0	£57.83
6100/25/J/11.0	1	11.0	£69.10

- Soft valve washer for 'bubble tight' seal
- High performance
- Atmospheric discharge
- Valve washers to suit air and inert gases
- Brass construction with stainless steel springs

Temperature Range:
 6000, 6100: -15°C to +140°C
 6200, 6300, 6500: -15°C to +180°C

Set Pressure Range:
 10.5 bar (152 psi) to 27.6 bar (400 psi)

Series 6200 Safety Relief Valve



- Series 6200 high lift safety relief valve
- Side outlet discharge with easing lever
- For use on compressed air supply systems and pressure vessels

PGC: 120	BSPT	Set Pressure (bar)	Price
6200/15/G/5.5	1/2	5.5	£61.73
6200/15/H/9.0	1/2	9.0	£61.73
6200/20/G/5.5	3/4	5.5	£66.65
6200/25/G/5.5	1	5.5	£118.48

Series 6300 Safety Relief Valve



Oxygen Cleaned

- Series 6300 high lift safety relief valve
- Side outlet discharge with easing lever
- Oxygen cleaned

PGC: 120	BSP	Set Pressure (bar)	Price
6300/15/G/5.5	1/2	5.5	£74.46
6300/20/G/5.5	3/4	5.5	£87.19
6300/25/G/5.5	1	5.5	£132.58

Series 6500 Safety Relief Valve



- Series 6500 high lift safety relief valve
- Side outlet discharge
- Sealed top for use with medical gas lines

PGC: 120	BSP	Set Pressure (bar)	Price
6500/15/G/5.5	1/2	5.5	£72.66
6500/20/G/5.5	3/4	5.5	£72.66
6500/25/G/5.5	1	5.5	£72.66

Needle Valves

Fulham Nozzle Needle Valve



Maximum Pressure:
6.8 bar (100 psi)



- To suit 3/8" ID hose
- Foot mounted with brass spindle

PGC: 100	OD (")	Price
WVA4/B/16/F1	1/4	£71.05

Needle Valve



Maximum Pressure:
6.8 bar (100 psi)



- Foot mounted with brass spindle

PGC: 100	OD (")	Price
WVA4/B/16	1/4	£53.49
WVA4/B/20	5/16	£42.98

Angle Needle Valve



Maximum Pressure:
 Pneumatic: 67 bar (970 psi);
 Hydraulic: 200 bar (2900 psi)



- Panel mounted with brass spindle

PGC: 100	OD (")	Price
WVA3/B/16	1/4	£52.64
WVA3/B/20	5/16	£75.53

NABIC® Safety Valves

FIG 500

Fig 500 High Lift Safety Valve

Female Threads BSPP

The Fig 500 High Lift Safety Valve has been designed primarily for use on unvented hot water heating systems, where a high capacity, emergency steam relief capability is required.

High capacity and resilient PTFE seating, also make the Fig 500 ideal for steam, air and inert gas applications. A PTFE to Viton® seating design is also available where greater seal tightness is required. All wetted parts are manufactured from dezincification resistant materials, approved by the Water Research Centre for use on potable water.



- Body material: gunmetal
- Resilient PTFE seating design
- High degree of seat tightness
- For hot water, steam and air
- High discharge capacity
- Diaphragm protected working parts
- Safe manual testing
- Easy inspection and cleaning
- Pressure setting locked & sealed
- BS EN ISO 4126-1: 2004 (BS 6759)
- Capacities certified by AOTC
- WRAS approved
- UKWFS listed
- Padlock available



Maximum Set Temperature:
+190°C



Maximum Set Pressure:
12.5 bar (180 psi)

3/8" BSPP x 1/2" BSPP

PGC: 119	Set at (bar)	Price
N-500-010-1	1	£111.65
N-500-010-1.5	1.5	£111.65
N-500-010-2	2	£111.65
N-500-010-2.5	2.5	£111.65
N-500-010-3	3	£111.65
N-500-010-3.5	3.5	£111.65
N-500-010-4	4	£111.65
N-500-010-4.5	4.5	£111.65
N-500-010-5	5	£111.65
N-500-010-5.5	5.5	£111.65
N-500-010-6	6	£111.65
N-500-010-6.5	6.5	£111.65
N-500-010-7	7	£111.65
N-500-010-7.5	7.5	£111.65
N-500-010-8	8	£111.65
N-500-010-8.5	8.5	£111.65
N-500-010-9	9	£111.65
N-500-010-9.5	9.5	£111.65
N-500-010-10	10	£111.65
N-500-010-10.5	10.5	£111.65
N-500-010-11	11	£111.65
N-500-010-11.5	11.5	£111.65
N-500-010-12	12	£111.65
N-500-010-12.5	12.5	£111.65

3/4" BSPP x 1" BSPP

PGC: 119	Set at (bar)	Price
N-500-020-1	1	£175.00
N-500-020-1.5	1.5	£175.00
N-500-020-2	2	£175.00
N-500-020-2.5	2.5	£175.00
N-500-020-3	3	£175.00
N-500-020-3.5	3.5	£175.00
N-500-020-4	4	£175.00
N-500-020-4.5	4.5	£175.00
N-500-020-5	5	£175.00
N-500-020-5.5	5.5	£175.00
N-500-020-6	6	£175.00
N-500-020-6.5	6.5	£175.00
N-500-020-7	7	£175.00
N-500-020-7.5	7.5	£175.00
N-500-020-8	8	£175.00
N-500-020-8.5	8.5	£175.00
N-500-020-9	9	£175.00
N-500-020-9.5	9.5	£175.00
N-500-020-10	10	£175.00
N-500-020-10.5	10.5	£175.00
N-500-020-11	11	£175.00
N-500-020-11.5	11.5	£175.00
N-500-020-12	12	£175.00
N-500-020-12.5	12.5	£175.00

1 1/4" BSPP x 1 1/2" BSPP

PGC: 119	Set at (bar)	Price
N-500-032-1	1	£347.74
N-500-032-1.5	1.5	£347.74
N-500-032-2	2	£347.74
N-500-032-2.5	2.5	£347.74
N-500-032-3	3	£347.74
N-500-032-3.5	3.5	£347.74
N-500-032-4	4	£347.74
N-500-032-4.5	4.5	£347.74
N-500-032-5	5	£347.74
N-500-032-5.5	5.5	£347.74
N-500-032-6	6	£347.74
N-500-032-6.5	6.5	£347.74
N-500-032-7	7	£347.74
N-500-032-7.5	7.5	£347.74
N-500-032-8	8	£347.74
N-500-032-8.5	8.5	£347.74
N-500-032-9	9	£347.74
N-500-032-9.5	9.5	£347.74
N-500-032-10	10	£347.74
N-500-032-10.5	10.5	£347.74
N-500-032-11	11	£347.74
N-500-032-11.5	11.5	£347.74
N-500-032-12	12	£347.74
N-500-032-12.5	12.5	£347.74

2" BSPP x 2 1/2" BSPP

PGC: 119	Set at (bar)	Price
N-500-050-1	1	£658.82
N-500-050-1.5	1.5	£658.82
N-500-050-2	2	£658.82
N-500-050-2.5	2.5	£658.82
N-500-050-3	3	£658.82
N-500-050-3.5	3.5	£658.82
N-500-050-4	4	£658.82
N-500-050-4.5	4.5	£658.82
N-500-050-5	5	£658.82
N-500-050-5.5	5.5	£658.82
N-500-050-6	6	£658.82
N-500-050-6.5	6.5	£658.82
N-500-050-7	7	£658.82
N-500-050-7.5	7.5	£658.82
N-500-050-8	8	£658.82
N-500-050-8.5	8.5	£658.82
N-500-050-9	9	£658.82
N-500-050-9.5	9.5	£658.82
N-500-050-10	10	£658.82
N-500-050-10.5	10.5	£658.82
N-500-050-11	11	£658.82
N-500-050-11.5	11.5	£658.82
N-500-050-12	12	£658.82
N-500-050-12.5	12.5	£658.82

1/2" BSPP x 3/4" BSPP

PGC: 119	Set at (bar)	Price
N-500-015-1	1	£136.48
N-500-015-1.5	1.5	£136.48
N-500-015-2	2	£136.48
N-500-015-2.5	2.5	£136.48
N-500-015-3	3	£136.48
N-500-015-3.5	3.5	£136.48
N-500-015-4	4	£136.48
N-500-015-4.5	4.5	£136.48
N-500-015-5	5	£136.48
N-500-015-5.5	5.5	£136.48
N-500-015-6	6	£136.48
N-500-015-6.5	6.5	£136.48
N-500-015-7	7	£136.48
N-500-015-7.5	7.5	£136.48
N-500-015-8	8	£136.48
N-500-015-8.5	8.5	£136.48
N-500-015-9	9	£136.48
N-500-015-9.5	9.5	£136.48
N-500-015-10	10	£136.48
N-500-015-10.5	10.5	£136.48
N-500-015-11	11	£136.48
N-500-015-11.5	11.5	£136.48
N-500-015-12	12	£136.48
N-500-015-12.5	12.5	£136.48

1" BSPP x 1 1/4" BSPP

PGC: 119	Set at (bar)	Price
N-500-025-1	1	£247.25
N-500-025-1.5	1.5	£247.25
N-500-025-2	2	£247.25
N-500-025-2.5	2.5	£247.25
N-500-025-3	3	£247.25
N-500-025-3.5	3.5	£247.25
N-500-025-4	4	£247.25
N-500-025-4.5	4.5	£247.25
N-500-025-5	5	£247.25
N-500-025-5.5	5.5	£247.25
N-500-025-6	6	£247.25
N-500-025-6.5	6.5	£247.25
N-500-025-7	7	£247.25
N-500-025-7.5	7.5	£247.25
N-500-025-8	8	£247.25
N-500-025-8.5	8.5	£247.25
N-500-025-9	9	£247.25
N-500-025-9.5	9.5	£247.25
N-500-025-10	10	£247.25
N-500-025-10.5	10.5	£247.25
N-500-025-11	11	£247.25
N-500-025-11.5	11.5	£247.25
N-500-025-12	12	£247.25
N-500-025-12.5	12.5	£247.25

1 1/2" BSPP x 2" BSPP

PGC: 119	Set at (bar)	Price
N-500-40-1	1	£455.94
N-500-40-1.5	1.5	£455.94
N-500-40-2	2	£455.94
N-500-40-2.5	2.5	£455.94
N-500-40-3	3	£455.94
N-500-40-3.5	3.5	£455.94
N-500-40-4	4	£455.94
N-500-40-4.5	4.5	£455.94
N-500-40-5	5	£455.94
N-500-40-5.5	5.5	£455.94
N-500-40-6	6	£455.94
N-500-40-6.5	6.5	£455.94
N-500-40-7	7	£455.94
N-500-40-7.5	7.5	£455.94
N-500-40-8	8	£455.94
N-500-40-8.5	8.5	£455.94
N-500-40-9	9	£455.94
N-500-40-9.5	9.5	£455.94
N-500-40-10	10	£455.94
N-500-40-10.5	10.5	£455.94
N-500-40-11	11	£455.94
N-500-40-11.5	11.5	£455.94
N-500-40-12	12	£455.94
N-500-40-12.5	12.5	£455.94

2 1/2" BSPP x 3" BSPP

PGC: 119	Set at (bar)	Price
N-500-065-1	1	£915.23
N-500-065-1.5	1.5	£915.23
N-500-065-2	2	£915.23
N-500-065-2.5	2.5	£915.23
N-500-065-3	3	£915.23
N-500-065-3.5	3.5	£915.23
N-500-065-4	4	£915.23
N-500-065-4.5	4.5	£915.23
N-500-065-5	5	£915.23
N-500-065-5.5	5.5	£915.23
N-500-065-6	6	£915.23
N-500-065-6.5	6.5	£915.23
N-500-065-7	7	£915.23
N-500-065-7.5	7.5	£915.23
N-500-065-8	8	£915.23
N-500-065-8.5	8.5	£915.23
N-500-065-9	9	£915.23
N-500-065-9.5	9.5	£915.23
N-500-065-10	10	£915.23
N-500-065-10.5	10.5	£915.23
N-500-065-11	11	£915.23
N-500-065-11.5	11.5	£915.23
N-500-065-12	12	£915.23
N-500-065-12.5	12.5	£915.23

12

FIG 542

Fig 542 Service Relief Valve

Female Threads BSPP

The Fig 542 Safety Valve is an extremely versatile valve, suitable for use on hot water, steam or air.

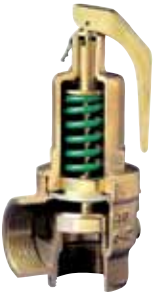
Although designed primarily for the protection of hot water boilers, its wide range of applications make it an ideal valve for stocking as a general purpose safety valve.

The Fig 542 is of gunmetal construction, with diaphragm protected working parts and PTFE to metal seating.

All wetted parts are manufactured from dezincification resistant materials, approved by the Water Research Centre for use on potable water. Inlet and outlet connections are of equal size, with female threads to BS 21.

Sizes from DN32 upwards are also available with flanged inlet connections.

For other specific technical requirements please contact our Sales Team.



- Body material: gunmetal
- Resilient PTFE seating design
- High degree of seat tightness
- For hot water, steam and air
- High discharge capacity
- Diaphragm protected working parts
- Safe manual testing
- Easy inspection and cleaning
- Pressure setting locked & sealed
- BS EN ISO 4126-1: 2004 (BS 6759)
- Capacities certified by AOTC
- WRAS approved
- UKWFSB listed
- Padlock available



Maximum Set Temperature:
+190°C



Maximum Set Pressure:
12.5 bar (180 psi)



1/2" BSPP x 1/2" BSPP

PGC: 119	Set to (bar)	Price
N-542-015-1	1	£108.90
N-542-015-1.5	1.5	£108.90
N-542-015-2	2	£108.90
N-542-015-2.5	2.5	£108.90
N-542-015-3	3	£108.90
N-542-015-3.5	3.5	£108.90
N-542-015-4	4	£108.90
N-542-015-4.5	4.5	£108.90
N-542-015-5	5	£108.90
N-542-015-5.5	5.5	£108.90
N-542-015-6	6	£108.90
N-542-015-6.5	6.5	£108.90
N-542-015-7	7	£108.90
N-542-015-7.5	7.5	£108.90
N-542-015-8	8	£108.90
N-542-015-8.5	8.5	£108.90
N-542-015-9	9	£108.90
N-542-015-9.5	9.5	£108.90
N-542-015-10	10	£108.90
N-542-015-10.5	10.5	£108.90

1" BSPP x 1" BSPP

PGC: 119	Set to (bar)	Price
N-542-025-1	1	£165.23
N-542-025-1.5	1.5	£165.23
N-542-025-2	2	£165.23
N-542-025-2.5	2.5	£165.23
N-542-025-3	3	£165.23
N-542-025-3.5	3.5	£165.23
N-542-025-4	4	£165.23
N-542-025-4.5	4.5	£165.23
N-542-025-5	5	£165.23
N-542-025-5.5	5.5	£165.23
N-542-025-6	6	£165.23
N-542-025-6.5	6.5	£165.23
N-542-025-7	7	£165.23
N-542-025-7.5	7.5	£165.23
N-542-025-8	8	£165.23
N-542-025-8.5	8.5	£165.23
N-542-025-9	9	£165.23
N-542-025-9.5	9.5	£165.23
N-542-025-10	10	£165.23
N-542-025-10.5	10.5	£165.23

1 1/2" BSPP x 1 1/2" BSPP

PGC: 119	Set to (bar)	Price
N-542-040-1	1	£308.01
N-542-040-1.5	1.5	£308.01
N-542-040-2	2	£308.01
N-542-040-2.5	2.5	£308.01
N-542-040-3	3	£308.01
N-542-040-3.5	3.5	£308.01
N-542-040-4	4	£308.01
N-542-040-4.5	4.5	£308.01
N-542-040-5	5	£308.01
N-542-040-5.5	5.5	£308.01
N-542-040-6	6	£308.01
N-542-040-6.5	6.5	£308.01
N-542-040-7	7	£308.01
N-542-040-7.5	7.5	£308.01
N-542-040-8	8	£308.01
N-542-040-8.5	8.5	£308.01
N-542-040-9	9	£308.01
N-542-040-9.5	9.5	£308.01
N-542-040-10	10	£308.01
N-542-040-10.5	10.5	£308.01

2 1/2" BSPP x 2 1/2" BSPP

PGC: 119	Set to (bar)	Price
N-542-065-1	1	£545.83
N-542-065-1.5	1.5	£545.83
N-542-065-2	2	£545.83
N-542-065-2.5	2.5	£545.83
N-542-065-3	3	£545.83
N-542-065-3.5	3.5	£545.83
N-542-065-4	4	£545.83
N-542-065-4.5	4.5	£545.83
N-542-065-5	5	£545.83
N-542-065-5.5	5.5	£545.83
N-542-065-6	6	£545.83
N-542-065-6.5	6.5	£545.83
N-542-065-7	7	£545.83
N-542-065-7.5	7.5	£545.83
N-542-065-8	8	£545.83
N-542-065-8.5	8.5	£545.83
N-542-065-9	9	£545.83
N-542-065-9.5	9.5	£545.83
N-542-065-10	10	£545.83
N-542-065-10.5	10.5	£545.83

3/4" BSPP x 3/4" BSPP

PGC: 119	Set to (bar)	Price
N-542-020-1	1	£125.01
N-542-020-1.5	1.5	£125.01
N-542-020-2	2	£125.01
N-542-020-2.5	2.5	£125.01
N-542-020-3	3	£125.01
N-542-020-3.5	3.5	£125.01
N-542-020-4	4	£125.01
N-542-020-4.5	4.5	£125.01
N-542-020-5	5	£125.01
N-542-020-5.5	5.5	£125.01
N-542-020-6	6	£125.01
N-542-020-6.5	6.5	£125.01
N-542-020-7	7	£125.01
N-542-020-7.5	7.5	£125.01
N-542-020-8	8	£125.01
N-542-020-8.5	8.5	£125.01
N-542-020-9	9	£125.01
N-542-020-9.5	9.5	£125.01
N-542-020-10	10	£125.01
N-542-020-10.5	10.5	£125.01

1 1/4" BSPP x 1 1/4" BSPP

PGC: 119	Set to (bar)	Price
N-542-032-1	1	£229.93
N-542-032-1.5	1.5	£229.93
N-542-032-2	2	£229.93
N-542-032-2.5	2.5	£229.93
N-542-032-3	3	£229.93
N-542-032-3.5	3.5	£229.93
N-542-032-4	4	£229.93
N-542-032-4.5	4.5	£229.93
N-542-032-5	5	£229.93
N-542-032-5.5	5.5	£229.93
N-542-032-6	6	£229.93
N-542-032-6.5	6.5	£229.93
N-542-032-7	7	£229.93
N-542-032-7.5	7.5	£229.93
N-542-032-8	8	£229.93
N-542-032-8.5	8.5	£229.93
N-542-032-9	9	£229.93
N-542-032-9.5	9.5	£229.93
N-542-032-10	10	£229.93
N-542-032-10.5	10.5	£229.93

2" BSPP x 2" BSPP

PGC: 119	Set to (bar)	Price
N-542-050-1	1	£388.66
N-542-050-1.5	1.5	£388.66
N-542-050-2	2	£388.66
N-542-050-2.5	2.5	£388.66
N-542-050-3	3	£388.66
N-542-050-3.5	3.5	£388.66
N-542-050-4	4	£388.66
N-542-050-4.5	4.5	£388.66
N-542-050-5	5	£388.66
N-542-050-5.5	5.5	£388.66
N-542-050-6	6	£388.66
N-542-050-6.5	6.5	£388.66
N-542-050-7	7	£388.66
N-542-050-7.5	7.5	£388.66
N-542-050-8	8	£388.66
N-542-050-8.5	8.5	£388.66
N-542-050-9	9	£388.66
N-542-050-9.5	9.5	£388.66
N-542-050-10	10	£388.66
N-542-050-10.5	10.5	£388.66

3" BSPP x 3" BSPP

PGC: 119	Set to (bar)	Price
N-542-080-1	1	£781.41
N-542-080-1.5	1.5	£781.41
N-542-080-2	2	£781.41
N-542-080-2.5	2.5	£781.41
N-542-080-3	3	£781.41
N-542-080-3.5	3.5	£781.41
N-542-080-4	4	£781.41
N-542-080-4.5	4.5	£781.41
N-542-080-5	5	£781.41
N-542-080-5.5	5.5	£781.41
N-542-080-6	6	£781.41
N-542-080-6.5	6.5	£781.41
N-542-080-7	7	£781.41
N-542-080-7.5	7.5	£781.41
N-542-080-8	8	£781.41
N-542-080-8.5	8.5	£781.41
N-542-080-9	9	£781.41
N-542-080-9.5	9.5	£781.41
N-542-080-10	10	£781.41
N-542-080-10.5	10.5	£781.41

FIG 542L

- Body material: gunmetal
- Resilient PTFE seating design
- High degree of seat tightness
- For liquids and gases
- Top guided working parts
- Pressure tight on discharge side
- BS EN ISO 4126-1: 2004 (BS 6759)
- Flanged inlets available
- WRAS approved
- Certified discharge tables

Fig 542L Pressure Relief Valve

Female Threads BSPP

Nabic Pressure Relief Valves are intended for use where pressure tightness is required on the discharge side of the valve. They are ideal for pump relief, bypass relief, outside installations, and inflammable fluids.

The valves are of gunmetal construction with top guided copper alloy parts, chrome vanadium spring and PTFE to metal seating. O-ring seals ensure pressure tightness at cover and cap joints.



Available options are: stainless steel springs, high pressure versions and Viton® seat design.

For further information please contact our Sales Team.



1/2" BSPP x 1/2" BSPP

PGC: 119	Set to (bar)	Price
N-542L-015-1	1	£109.92
N-542L-015-1.5	1.5	£109.92
N-542L-015-2	2	£109.92
N-542L-015-2.5	2.5	£109.92
N-542L-015-3	3	£109.92
N-542L-015-3.5	3.5	£109.92
N-542L-015-4	4	£109.92
N-542L-015-4.5	4.5	£109.92
N-542L-015-5	5	£109.92
N-542L-015-5.5	5.5	£109.92
N-542L-015-6	6	£109.92
N-542L-015-6.5	6.5	£109.92
N-542L-015-7	7	£109.92
N-542L-015-7.5	7.5	£109.92
N-542L-015-8	8	£109.92
N-542L-015-8.5	8.5	£109.92
N-542L-015-9	9	£109.92
N-542L-015-9.5	9.5	£109.92
N-542L-015-10	10	£109.92
N-542L-015-10.5	10.5	£109.92

1" BSPP x 1" BSPP

PGC: 119	Set to (bar)	Price
N-542L-025-1	1	£166.94
N-542L-025-1.5	1.5	£166.94
N-542L-025-2	2	£166.94
N-542L-025-2.5	2.5	£166.94
N-542L-025-3	3	£166.94
N-542L-025-3.5	3.5	£166.94
N-542L-025-4	4	£166.94
N-542L-025-4.5	4.5	£166.94
N-542L-025-5	5	£166.94
N-542L-025-5.5	5.5	£166.94
N-542L-025-6	6	£166.94
N-542L-025-6.5	6.5	£166.94
N-542L-025-7	7	£166.94
N-542L-025-7.5	7.5	£166.94
N-542L-025-8	8	£166.94
N-542L-025-8.5	8.5	£166.94
N-542L-025-9	9	£166.94
N-542L-025-9.5	9.5	£166.94
N-542L-025-10	10	£166.94
N-542L-025-10.5	10.5	£166.94

1 1/2" BSPP x 1 1/2" BSPP

PGC: 119	Set to (bar)	Price
N-542L-040-1	1	£308.01
N-542L-040-1.5	1.5	£308.01
N-542L-040-2	2	£308.01
N-542L-040-2.5	2.5	£308.01
N-542L-040-3	3	£308.01
N-542L-040-3.5	3.5	£308.01
N-542L-040-4	4	£308.01
N-542L-040-4.5	4.5	£308.01
N-542L-040-5	5	£308.01
N-542L-040-5.5	5.5	£308.01
N-542L-040-6	6	£308.01
N-542L-040-6.5	6.5	£308.01
N-542L-040-7	7	£308.01
N-542L-040-7.5	7.5	£308.01
N-542L-040-8	8	£308.01
N-542L-040-8.5	8.5	£308.01
N-542L-040-9	9	£308.01
N-542L-040-9.5	9.5	£308.01
N-542L-040-10	10	£308.01
N-542L-040-10.5	10.5	£308.01

2 1/2" BSPP x 2 1/2" BSPP

PGC: 119	Set to (bar)	Price
N-542L-065-1	1	£545.83
N-542L-065-1.5	1.5	£545.83
N-542L-065-2	2	£545.83
N-542L-065-2.5	2.5	£545.83
N-542L-065-3	3	£545.83
N-542L-065-3.5	3.5	£545.83
N-542L-065-4	4	£545.83
N-542L-065-4.5	4.5	£545.83
N-542L-065-5	5	£545.83
N-542L-065-5.5	5.5	£545.83
N-542L-065-6	6	£545.83
N-542L-065-6.5	6.5	£545.83
N-542L-065-7	7	£545.83
N-542L-065-7.5	7.5	£545.83
N-542L-065-8	8	£545.83
N-542L-065-8.5	8.5	£545.83
N-542L-065-9	9	£545.83
N-542L-065-9.5	9.5	£545.83
N-542L-065-10	10	£545.83
N-542L-065-10.5	10.5	£545.83

3/4" BSPP x 3/4" BSPP

PGC: 119	Set to (bar)	Price
N-542L-020-1	1	£126.20
N-542L-020-1.5	1.5	£126.20
N-542L-020-2	2	£126.20
N-542L-020-2.5	2.5	£126.20
N-542L-020-3	3	£126.20
N-542L-020-3.5	3.5	£126.20
N-542L-020-4	4	£126.20
N-542L-020-4.5	4.5	£126.20
N-542L-020-5	5	£126.20
N-542L-020-5.5	5.5	£126.20
N-542L-020-6	6	£126.20
N-542L-020-6.5	6.5	£126.20
N-542L-020-7	7	£126.20
N-542L-020-7.5	7.5	£126.20
N-542L-020-8	8	£126.20
N-542L-020-8.5	8.5	£126.20
N-542L-020-9	9	£126.20
N-542L-020-9.5	9.5	£126.20
N-542L-020-10	10	£126.20
N-542L-020-10.5	10.5	£126.20

1 1/4" BSPP x 1 1/4" BSPP

PGC: 119	Set to (bar)	Price
N-542L-032-1	1	£229.93
N-542L-032-1.5	1.5	£229.93
N-542L-032-2	2	£229.93
N-542L-032-2.5	2.5	£229.93
N-542L-032-3	3	£229.93
N-542L-032-3.5	3.5	£229.93
N-542L-032-4	4	£229.93
N-542L-032-4.5	4.5	£229.93
N-542L-032-5	5	£229.93
N-542L-032-5.5	5.5	£229.93
N-542L-032-6	6	£229.93
N-542L-032-6.5	6.5	£229.93
N-542L-032-7	7	£229.93
N-542L-032-7.5	7.5	£229.93
N-542L-032-8	8	£229.93
N-542L-032-8.5	8.5	£229.93
N-542L-032-9	9	£229.93
N-542L-032-9.5	9.5	£229.93
N-542L-032-10	10	£229.93
N-542L-032-10.5	10.5	£229.93

2" BSPP x 2" BSPP

PGC: 119	Set to (bar)	Price
N-542L-050-1	1	£388.66
N-542L-050-1.5	1.5	£388.66
N-542L-050-2	2	£388.66
N-542L-050-2.5	2.5	£388.66
N-542L-050-3	3	£388.66
N-542L-050-3.5	3.5	£388.66
N-542L-050-4	4	£388.66
N-542L-050-4.5	4.5	£388.66
N-542L-050-5	5	£388.66
N-542L-050-5.5	5.5	£388.66
N-542L-050-6	6	£388.66
N-542L-050-6.5	6.5	£388.66
N-542L-050-7	7	£388.66
N-542L-050-7.5	7.5	£388.66
N-542L-050-8	8	£388.66
N-542L-050-8.5	8.5	£388.66
N-542L-050-9	9	£388.66
N-542L-050-9.5	9.5	£388.66
N-542L-050-10	10	£388.66
N-542L-050-10.5	10.5	£388.66

3" BSPP x 3" BSPP

PGC: 119	Set to (bar)	Price
N-542L-080-1	1	£781.41
N-542L-080-1.5	1.5	£781.41
N-542L-080-2	2	£781.41
N-542L-080-2.5	2.5	£781.41
N-542L-080-3	3	£781.41
N-542L-080-3.5	3.5	£781.41
N-542L-080-4	4	£781.41
N-542L-080-4.5	4.5	£781.41
N-542L-080-5	5	£781.41
N-542L-080-5.5	5.5	£781.41
N-542L-080-6	6	£781.41
N-542L-080-6.5	6.5	£781.41
N-542L-080-7	7	£781.41
N-542L-080-7.5	7.5	£781.41
N-542L-080-8	8	£781.41
N-542L-080-8.5	8.5	£781.41
N-542L-080-9	9	£781.41
N-542L-080-9.5	9.5	£781.41
N-542L-080-10	10	£781.41
N-542L-080-10.5	10.5	£781.41

RHODES

Sight Glasses & Flow Indicators

Rhodes are a market leader in the design and manufacture of sight flow indicator equipment, having produced indicators since 1951.

Rhodes products can be found in process and petrochemical plants all over the world. The Rhodes name is guarantee of the highest quality product design and manufacture, with quality systems conforming to ISO 9001.

Rhodes flow indicators and sight glasses are devices that enable a visual check if there is a flow of liquid through a pipeline. The pressure range available is from full vacuum up to 50 bar (725 psi) (higher available on request) with temperatures from -40°C up to +400°C possible.

CE All Rhodes products are PED compliant and CE marked where applicable.

Sight Glasses

Construction Materials

Body	ASTM A351 CF8M
Covers	ASTM A351 CF8M
Glass	Toughened Soda Lime or Borosilicate Glass
Gaskets	PTFE
Nuts and through Bolt	316 Stainless Steel
Flap (Fig 234 only)	316 Stainless Steel
Scaleplate (Fig 234 only)	316 Stainless Steel



Working Pressure:
Maximum 10 bar (145 psi) @ +200°C

Series 234 Sight Glass

Stainless Steel



• Flap and scale plate

PGC: 115	Size (")	Thread	Price
R-234-15-BSPP	1/2	BSPP	£250.04
R-234-20-BSPP	3/4	BSPP	£270.86
R-234-25-BSPP	1	BSPP	£303.61
R-234-32-BSPP	1 1/4	BSPP	£383.98
R-234-40-BSPP	1 1/2	BSPP	£398.88
R-234-50-BSPP	2	BSPP	£557.62
R-234-15-BSPT	1/2	BSPT	£250.04
R-234-20-BSPT	3/4	BSPT	£270.86
R-234-25-BSPT	1	BSPT	£303.61
R-234-32-BSPT	1 1/4	BSPT	£383.98
R-234-40-BSPT	1 1/2	BSPT	£398.88
R-234-50-BSPT	2	BSPT	£557.62
R-234-15-NPT	1/2	NPT	£250.04
R-234-20-NPT	3/4	NPT	£270.86
R-234-25-NPT	1	NPT	£303.61
R-234-32-NPT	1 1/4	NPT	£383.98
R-234-40-NPT	1 1/2	NPT	£398.88
R-234-50-NPT	2	NPT	£557.62

Series 200 Sight Glass

Stainless Steel



PGC: 115	Size (")	Thread	Price
R-233-15-BSPP	1/2	BSPP	£214.35
R-233-20-BSPP	3/4	BSPP	£223.27
R-233-25-BSPP	1	BSPP	£270.86
R-233-32-BSPP	1 1/4	BSPP	£336.37
R-233-40-BSPP	1 1/2	BSPP	£351.25
R-233-50-BSPP	2	BSPP	£487.41
R-233-15-BSPT	1/2	BSPT	£214.35
R-233-20-BSPT	3/4	BSPT	£223.27
R-233-25-BSPT	1	BSPT	£270.86
R-233-32-BSPT	1 1/4	BSPT	£336.37
R-233-40-BSPT	1 1/2	BSPT	£351.25
R-233-50-BSPT	2	BSPT	£487.41
R-233-15-NPT	1/2	NPT	£214.35
R-233-20-NPT	3/4	NPT	£223.27
R-233-25-NPT	1	NPT	£270.86
R-233-32-NPT	1 1/4	NPT	£336.37
R-233-40-NPT	1 1/2	NPT	£351.25
R-233-50-NPT	2	NPT	£487.41

Series 400 Flow Indicators

Construction Materials

Body (choice)	Gunmetal BS EN 1928 CB419K Stainless Steel ASTM A351 CF8M
Cover Rings	Nickel Plated Brass BS 2872 CZ122
Glass	Gunmetal Soda Lime Glass BS 3463 Toughened Borosilicate DIN 7080
Gaskets	Nitrile O Ring BS 128
Spinner Pin	316 Stainless Steel
Spinner	Nylon
Ball	PTFE



Working Pressure:
Maximum 7 bar (100 psi) @ +100°C

Series 400 Flow Indicator

Stainless Steel
with Spinner



PGC: 115	Size (")	Thread	Price
R-400-8-SS-ST-BSPP	1/4	BSPP	£138.41
R-400-10-SS-ST-BSPP	3/8	BSPP	£142.91
R-400-15-SS-ST-BSPP	1/2	BSPP	£147.36
R-400-20-SS-ST-BSPP	3/4	BSPP	£209.86
R-400-25-SS-ST-BSPP	1	BSPP	£263.43
R-400-8-SS-ST-BSPT	1/4	BSPT	£138.41
R-400-10-SS-ST-BSPT	3/8	BSPT	£142.91
R-400-15-SS-ST-BSPT	1/2	BSPT	£147.36
R-400-20-SS-ST-BSPT	3/4	BSPT	£209.86
R-400-25-SS-ST-BSPT	1	BSPT	£263.43
R-400-8-SS-ST-NPT	1/4	NPT	£138.41
R-400-10-SS-ST-NPT	3/8	NPT	£142.91
R-400-15-SS-ST-NPT	1/2	NPT	£147.36
R-400-20-SS-ST-NPT	3/4	NPT	£209.86
R-400-25-SS-ST-NPT	1	NPT	£263.43

Series 400 Flow Indicator

Gun Metal
with Spinner



PGC: 115	Size (")	Thread	Price
R-400-8-GM-ST-BSPP	1/4	BSPP	£97.57
R-400-10-GM-ST-BSPP	3/8	BSPP	£87.83
R-400-15-GM-ST-BSPP	1/2	BSPP	£100.61
R-400-20-GM-ST-BSPP	3/4	BSPP	£143.32
R-400-25-GM-ST-BSPP	1	BSPP	£179.90
R-400-8-GM-ST-BSPT	1/4	BSPT	£94.55
R-400-10-GM-ST-BSPT	3/8	BSPT	£97.57
R-400-15-GM-ST-BSPT	1/2	BSPT	£100.61
R-400-20-GM-ST-BSPT	3/4	BSPT	£143.32
R-400-25-GM-ST-BSPT	1	BSPT	£179.90
R-400-8-GM-ST-NPT	1/4	NPT	£94.55
R-400-10-GM-ST-NPT	3/8	NPT	£97.57
R-400-15-GM-ST-NPT	1/2	NPT	£100.61
R-400-20-GM-ST-NPT	3/4	NPT	£143.32
R-400-25-GM-ST-NPT	1	NPT	£179.90

Series 400 Flow Indicator

Gun Metal with Ball



PGC: 115	Size (")	Thread	Price
R-400-8-GM-BT-BSPP	1/4	BSPP	£76.34
R-400-10-GM-BT-BSPP	3/8	BSPP	£87.83
R-400-15-GM-BT-BSPP	1/2	BSPP	£90.55
R-400-20-GM-BT-BSPP	3/4	BSPP	£128.98
R-400-25-GM-BT-BSPP	1	BSPP	£161.94
R-400-8-GM-BT-BSPT	1/4	BSPT	£76.34
R-400-10-GM-BT-BSPT	3/8	BSPT	£87.83
R-400-15-GM-BT-BSPT	1/2	BSPT	£90.55
R-400-20-GM-BT-BSPT	3/4	BSPT	£128.98
R-400-25-GM-BT-BSPT	1	BSPT	£161.94
R-400-8-GM-BT-NPT	1/4	NPT	£76.34
R-400-10-GM-BT-NPT	3/8	NPT	£87.83
R-400-15-GM-BT-NPT	1/2	NPT	£90.55
R-400-20-GM-BT-NPT	3/4	NPT	£128.98
R-400-25-GM-BT-NPT	1	NPT	£161.94