

08

Adaptors & Fittings

Nylon Hose Fittings, Brass Adaptors, Cam and Groove Couplings, ABS and uPVC Pipe System Fittings, Brass and Steel Adaptors, Brass Rapid Push-Over Fittings, HNL Minifolds





Sistem P Nickel Plated Fittings

Designed for quick coupling and release of tube, Sistem P nickel-plated fittings are manufactured using the latest technology and are compatible with a variety of tube including nylon.

Utilising lightweight, high-strength materials, the fittings are nickel-plated to protect against corrosion, making them particularly suitable for food and chemical applications.

Special oil resistant, nitrile O-ring seals are used for prolonged life and create a bubble-tight seal which is particularly suitable for low-pressure circuits. Once the tube is inserted into the fitting it is automatically sealed and locked into position with a unique security grip

Technical Specifications

Media:	Air, Gas, Fluid
Maximum Pressure:	20 bar (290 psi)
Maximum Temperature:	+80°C
Tube Tolerances:	4 mm - 5 mm = +0.05, -0.07
	6 mm -14 mm = +0.05, -0.10
Sealing Options BSPP / Metric Threads:	Static O-ring
	Parallel washer
Sealing Options BSPT Threads:	PTFE coated

Female Reducing Socket

Female Thread BSPP



PGC: 108	BSPP 1	BSPP 2	Price
S17480	1/4	1/8	£1.13
S17380	3/8	1/8	£2.13
S17340	3/8	1/4	£2.28
S17240	1/2	1/4	£2.98
S17230	1/2	3/8	£3.30
S17210	3/4	1/2	£9.03
S17150	1	3/4	£12.91

Male Female Elbow

Male Thread BSPT
Female Thread BSPP



PGC: 108	BSP	Price
Z30880	1/8	£1.51
Z30440	1/4	£8.84
Z30330	3/8	£2.97
Z30220	1/2	£4.71
Z30110	3/4	£8.80
Z30550	1	£10.58

Male Elbow

Male Thread BSPT



PGC: 108	BSPT	Price
Z32880	1/8	£1.43
Z32440	1/4	£2.16
Z32330	3/8	£2.82
Z32220	1/2	£6.42
Z32110	3/4	£6.42
Z32550	1	£10.57

Female Elbow

Female Thread BSPP



PGC: 108	BSPP	Price
Z31880	1/8	£1.74
Z31440	1/4	£2.99
Z31330	3/8	£3.38
Z31220	1/2	£5.74
Z31110	3/4	£6.42
Z31550	1	£11.54

Male Tee

Male Thread BSPT



PGC: 108	BSPT	Price
Z35080	1/8	£1.97
Z35040	1/4	£3.08
Z35030	3/8	£3.70
Z35020	1/2	£6.46
Z35010	3/4	£8.30
Z35050	1	£13.95

Female Tee

Female Thread BSPP



PGC: 108	BSPP	Price
Z34080	1/8	£1.95
Z34040	1/4	£2.98
Z34030	3/8	£4.65
Z34020	1/2	£8.84
Z34010	3/4	£8.30
Z34050	1	£13.95

Male Branch Tee

Male Thread BSPT
Female Thread BSPP



PGC: 108	BSP	Price
Z33080	1/8	£1.95
Z33040	1/4	£2.98
Z33030	3/8	£4.65
Z33020	1/2	£8.82
Z33010	3/4	£8.30
Z33050	1	£13.95

Female Branch Tee

Male Thread BSPT
Female Thread BSPP



PGC: 108	BSP	Price
Z37080	1/8	£2.04
Z37040	1/4	£3.08
Z37030	3/8	£4.11
Z37020	1/2	£6.70



Female Socket

Female Thread BSPP



PGC: 108	BSPP	Price
S16080	1/8	£0.89
S16040	1/4	£1.14
S16030	3/8	£1.61
S16020	1/2	£2.83
S16010	3/4	£5.49

Reducing Bush

Male Thread BSPP
Female Thread BSPP



PGC: 108	BSPP	BSPP	Price
S15480	1/4	1/8	£0.85
S15380	3/8	1/8	£1.13
S15340	3/8	1/4	£1.11
S15240	1/2	1/4	£1.95
S15230	1/2	3/8	£2.01
S15140	3/4	1/4	£3.00
S15130	3/4	3/8	£3.49
S15120	3/4	1/2	£2.94
S15530	1	3/8	£5.12
S15520	1	1/2	£5.12

Conical Extension Nipple Tapered

Male Thread BSPT
Female Thread BSPP



PGC: 108	BSPT	BSPP	Price
S12880	1/8	1/8	£0.80
S12840	1/8	1/4	£1.06
S12480	1/4	1/8	£1.11
S12440	1/4	1/4	£1.12
S12430	1/4	3/8	£1.97
S12340	3/8	1/4	£1.97
S12330	3/8	3/8	£1.99
S12320	3/8	1/2	£3.06
S12310	3/8	3/4	£3.77
S12230	1/2	3/8	£3.06
S12220	1/2	1/2	£3.26
S12210	1/2	3/4	£5.06
S12250	1/2	1	£5.64
S12110	3/4	3/4	£4.02
S12150	3/4	1	£5.79
S12550	1	1	£5.95

Male Run Tee

Male Thread BSPT
Female Thread BSPP



PGC: 108	BSP	Price
Z36080	1/8	£1.95
Z36040	1/4	£3.34
Z36030	3/8	£4.89
Z36020	1/2	£6.25
Z36010	3/4	£8.30
Z36050	1	£13.95

Reducing Bush

Male Thread BSPT
Female Thread BSPP



PGC: 108	BSPT	BSPP	Price
S14480	1/4	1/8	£0.66
S14380	3/8	1/8	£0.95
S14340	3/8	1/4	£0.94
S14240	1/2	1/4	£1.61
S14230	1/2	3/8	£1.61
S14140	3/4	1/4	£3.96
S14130	3/4	3/8	£3.77
S14120	3/4	1/2	£3.50
S14530	1	3/8	£5.12
S14520	1	1/2	£5.12
S14510	1	3/4	£5.58

Conical Extension Nipple Parallel

Male Thread BSPP
Female Thread BSPP



PGC: 108	BSPP 1	BSPP 2	Price
S13880	1/8	1/8	£0.78
S13840	1/8	1/4	£1.02
S13480	1/4	1/8	£1.01
S13440	1/4	1/4	£1.14
S13430	1/4	3/8	£1.57
S13340	3/8	1/4	£1.14
S13320	3/8	1/2	£3.06
S13330	3/8	3/8	£2.13
S13230	1/2	3/8	£3.06
S13220	1/2	1/2	£3.40
S13310	3/8	3/4	£4.20
S13210	1/2	3/4	£3.92
S13110	3/4	3/4	£4.40
S13250	1/2	1	£5.64
S13150	3/4	1	£5.81
S13550	1	1	£5.81

Hexagon Nipple

Male Thread BSPT



PGC: 108	BSPT 1	BSPT 2	Price
S10880	1/8	1/8	£0.65
S10840	1/8	1/4	£0.89
S10830	1/8	3/8	£1.19
S10820	1/8	1/2	£2.67
S10440	1/4	1/4	£0.89
S10430	1/4	3/8	£1.14
S10420	1/4	1/2	£2.00
S10330	3/8	3/8	£1.17
S10320	3/8	1/2	£2.01
S10220	1/2	1/2	£1.97
S10210	1/2	3/4	£4.74
S10520	1/2	1	£15.97
S10110	3/4	3/4	£4.30
S10150	3/4	1	£6.80
S10550	1	1	£7.21

Hexagon Nipple

Male Thread BSPP



PGC: 108	BSPP 1	BSPP 2	Price
S11880	1/8	1/8	£0.74
S11840	1/4	1/8	£0.95
S11440	1/4	1/4	£0.99
S11830	3/8	1/8	£1.31
S11430	3/8	1/4	£1.18
S11330	3/8	3/8	£1.51
S11420	1/2	1/4	£2.37
S11320	1/2	3/8	£2.35
S11220	1/2	1/2	£2.42
S11110	3/4	3/4	£4.88
S11550	1	1	£8.48

Cylindrical Extension Nipple

Male Thread BSPP



PGC: 108	BSPP	Length (mm)	Price
S18816	1/8	16	£1.06
S18836	1/8	36	£2.06
S18427	1/4	27	£2.00
S18443	1/4	43	£2.00



Y Connector

Male Thread BSPT
Female Thread BSPP



PGC: 108	BSP	Price
Z39880	1/8	£2.32
Z39440	1/4	£3.38
Z39330	3/8	£3.74
Z39220	1/2	£6.37

Blanking Cap

Female Thread BSPP



PGC: 108	BSPP	Price
S20080	1/8	£0.65
S20040	1/4	£1.02
S20030	3/8	£1.40
S20020	1/2	£2.44

L Fitting

Male Thread BSPT
Female Thread BSPP



PGC: 108	BSP	Price
S23880	1/8	£2.35
S23440	1/4	£3.41

Female Y Connector

Female Thread BSPP



PGC: 108	BSP	Price
Z40880	1/8	£2.32
Z40440	1/4	£2.76
Z40330	3/8	£3.64
Z40220	1/2	£5.61

Plug

Male Thread BSPP



PGC: 108	BSPP	Price
S19080	1/8	£0.84
S19040	1/4	£0.86
S19030	3/8	£1.02
S19020	1/2	£1.54

T Fitting

Male Thread BSPT
Female Thread BSPP



PGC: 108	BSP	Price
S24880	1/8	£2.98
S24440	1/4	£3.85

Cross

Male Thread BSPT
Female Thread BSPP



PGC: 108	BSP	Price
Z38080	1/8	£3.48
Z38040	1/4	£5.55
Z38030	3/8	£8.13

Plug O-Ring Seal

Male Thread BSPP



PGC: 108	BSPP	Price
S19088	1/8	£0.62
S19048	1/4	£0.84
S19038	3/8	£1.13
S19028	1/2	£2.20

4-Way Manifold

Female Thread BSPP



PGC: 108	BSP	Price
S22080	1/8	£3.40
S22040	1/4	£6.61
S22030	3/8	£9.32

Female Bulkhead

Female Thread BSPP



PGC: 108	BSPP	Price
FS83180	1/8	£2.10
FS83140	1/4	£3.56
FS83380	3/8	£5.64
FS83120	1/2	£6.55

See page 418

Flexible Nylon Tube



Brass Rapid Push-Over Fittings

Rapid push-over fittings designed for connecting nylon (PA 6, PA 11, PA 12), polyethylene, polyurethane and braided PVC tube. The range includes nuts, straight connectors, elbows, tees and crosses.

- Nickel-plated brass body, nut and base
- NBR O-ring seals

Threads

- BSPT to ISO7.1, BS 21, DIN 2999
- BSPP to ISO 228 Class A
- Metric to ISO R/262

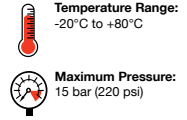
Media

- Compressed air
- Fluids and liquids at low pressure compatible with the connection

Temperatures and Pressures

Working pressures and temperatures are directly affected by the characteristics of the tube used.

For "swivel" type fittings the values are:



Equal Connectors

Straight Connector



PGC: 112	OD (mm)	ID (mm)	Price
MSC5P-RP	5	3	£3.12
MSC6P-RP	6	4	£2.89
MSC8P-RP	8	6	£3.18
MSC10P-RP	10	8	£4.22
MSC12P-RP	12	10	£5.22
MSC15P-RP	15	12.5	£9.02

Equal Crosses

Equal Cross



PGC: 112	OD (mm)	ID (mm)	Price
MX6P-RP	6	4	£6.45
MX8P-RP	8	6	£7.47

Bulkheads

Bulkhead



PGC: 112	OD (mm)	ID (mm)	Price
MBH5P-RP	5	3	£4.91
MBH6P-RP	6	4	£4.97
MBH8P-RP	8	6	£5.72
MBH10P-RP	10	8	£6.45
MBH12P-RP	12	10	£7.47

Equal Tees

Equal Tee



PGC: 112	OD (mm)	ID (mm)	Price
MT5P-RP	5	3	£4.09
MT6P-RP	6	4	£4.20
MT8P-RP	8	6	£4.63
MT10P-RP	10	8	£6.12
MT12P-RP	12	10	£7.97

Equal Elbows

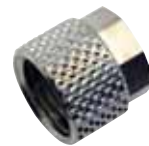
Equal Elbow



PGC: 112	OD (mm)	ID (mm)	Price
ME6P-RP	6	4	£3.36
ME8P-RP	8	6	£3.59
ME10P-RP	10	8	£4.51
ME12P-RP	12	10	£5.89

Locking Nuts

Locking Nut



PGC: 112	Thread	Price
LN5-7RP	M7 x 0.75	£0.61
LN6-8RP	M8 x 0.75	£0.61
LN6-10RP	M10 x 1	£0.61
LN8-12RP	M12 x 1	£0.80
LN10-14RP	M14 x 1	£1.01
LN15-20RP	M20 x 1	£1.61

Reducing Couplings

Reducing Coupling



PGC: 112	OD 1 (mm)	ID 1 (mm)	OD 2 (mm)	ID 2 (mm)	Price
MRC8-6P-RP	8	6	6	4	£3.07

Stud Couplings

Male Stud Coupling

Male Thread BSPT



PGC: 112	OD (mm)	ID (mm)	BSPT	Price
MMC5-2T-RP	5	3	1/8	£1.81
MMC6-4T-RP	6	4	1/4	£1.93
MMC6-6T-RP	6	4	3/8	£2.55
MMC8-2T-RP	8	6	1/8	£1.95
MMC8-4T-RP	8	6	1/4	£2.08
MMC8-6T-RP	8	6	3/8	£2.45
MMC10-2T-RP	10	8	1/8	£3.43
MMC10-4T-RP	10	8	1/4	£3.51
MMC10-6T-RP	10	8	3/8	£4.40
MMC10-8T-RP	10	8	1/2	£5.54
MMC12-6T-RP	12	10	3/8	£4.68
MMC12-8T-RP	12	10	1/2	£6.45
MMC15-8T-RP	15	12.5	1/2	£6.55

Male Stud Coupling

Male Thread Metric/BSPP



PGC: 112	OD (mm)	ID (mm)	BSPP/Metric	Price
MMC5-M5-RP	5	3	M5	£1.44
MMC5-M6-RP	5	3	M6	£1.44
MMC5-2P-RP	5	3	1/8	£1.92
MMC6-M5-RP	6	4	M5	£1.50
MMC6-M6-RP	6	4	M6	£1.64
MMC6-2P-RP	6	4	1/8	£1.73
MMC6-4P-RP	6	4	1/4	£2.13
MMC6-6P-RP	6	4	3/8	£2.41
MMC8-2P-RP	8	6	1/8	£1.91
MMC8-4P-RP	8	6	1/4	£2.32
MMC8-6P-RP	8	6	3/8	£2.76
MMC10-2P-RP	10	8	1/8	£2.29
MMC10-4P-RP	10	8	1/4	£2.78
MMC10-6P-RP	10	8	3/8	£3.01
MMC10-8P-RP	10	8	1/2	£4.08
MMC12-6P-RP	12	10	3/8	£3.67
MMC12-8P-RP	12	10	1/2	£4.91

Female Stud Coupling

Female Thread BSPP



PGC: 112	OD (mm)	ID (mm)	BSPP	Price
MFC6-2P-RP	6	4	1/8	£2.07
MFC6-4P-RP	6	4	1/4	£2.57
MFC6-6P-RP	6	4	3/8	£3.59
MFC8-2P-RP	8	6	1/8	£2.11
MFC8-4P-RP	8	6	1/4	£2.45
MFC8-6P-RP	8	6	3/8	£3.43
MFC10-4P-RP	10	8	1/4	£2.90
MFC10-6P-RP	10	8	3/8	£3.88
MFC10-8P-RP	10	8	1/2	£4.76

Stud Elbows

Male Stud Elbow

Male Thread BSPT



PGC: 112	OD (mm)	ID (mm)	BSPT	Price
MME5-2T-RP	5	3	1/8	£2.39
MME6-2T-RP	6	4	1/8	£2.45
MME6-4T-RP	6	4	1/4	£2.53
MME6-6T-RP	6	4	3/8	£2.86
MME8-2T-RP	8	6	1/8	£2.78
MME8-4T-RP	8	6	1/4	£2.92
MME8-6T-RP	8	6	3/8	£3.36
MME10-2T-RP	10	8	1/8	£3.43
MME10-4T-RP	10	8	1/4	£3.51
MME10-6T-RP	10	8	3/8	£4.40
MME10-8T-RP	10	8	1/2	£5.54
MME12-6T-RP	12	10	3/8	£4.68
MME12-8T-RP	12	10	1/2	£6.45
MME15-8T-RP	15	12.5	1/2	£6.55

Female Stud Elbow

Female Thread BSPP



PGC: 112	OD (mm)	ID (mm)	BSPP	Price
FSE5-2P-RP	5	3	1/8	£2.90
FSE6-2P-RP	6	4	1/8	£2.90
FSE6-4P-RP	6	4	1/4	£3.20
FSE8-2P-RP	8	6	1/8	£3.08
FSE8-4P-RP	8	6	1/4	£3.44
FSE10-4P-RP	10	8	1/4	£3.89

Swivel Elbows

Male Swivel Elbow

Male Thread BSPT



PGC: 112	OD (mm)	ID (mm)	BSPT	Price
MSE6-2T-RP	6	4	1/8	£4.12
MSE6-4T-RP	6	4	1/4	£4.66
MSE8-2T-RP	8	6	1/8	£4.46
MSE8-4T-RP	8	6	1/4	£4.85
MSE10-4T-RP	10	8	1/4	£5.53

Male Swivel Elbow

Male Thread BSPP



PGC: 112	OD (mm)	ID (mm)	BSPP	Price
MSE6-2P-RP	6	4	1/8	£4.12
MSE6-4P-RP	6	4	1/4	£4.66
MSE8-2P-RP	8	6	1/8	£4.46
MSE8-4P-RP	8	6	1/4	£4.85
MSE10-4P-RP	10	8	1/4	£5.53

Banjo Couplings

Male Banjo Elbow

Male Thread Metric/BSPP



PGC: 112	OD (mm)	ID (mm)	BSPP/Metric	Price
MBE5-M5-RP	5	3	M5	£2.11
MBE6-M5-RP	6	4	M5	£2.17
MBE6-2P-RP	6	4	1/8	£3.21
MBE6-4P-RP	6	4	1/4	£3.35
MBE8-2P-RP	8	6	1/8	£3.35
MBE8-4P-RP	8	6	1/4	£3.35
MBE10-4P-RP	10	8	1/4	£3.59

Male Banjo Tee

Male Thread BSPP



PGC: 112	OD (mm)	ID (mm)	BSPP	Price
MBT8-2P-RP	8	6	1/8	£7.71
MBT8-4P-RP	8	6	1/4	£7.71



Tees

Male Branch Tee

Male Thread BSPT



PGC: 112	OD (mm)	ID (mm)	BSPT	Price
MSBT6-2T-RP	6	4	1/8	£3.43
MSBT6-4T-RP	6	4	1/4	£3.59
MSBT8-2T-RP	8	6	1/8	£4.00
MSBT8-4T-RP	8	6	1/4	£4.16
MSBT10-4T-RP	10	8	1/4	£5.00
MSBT12-6T-RP	12	10	3/8	£6.95

Male Run Tee

Male Thread BSPT



PGC: 112	OD (mm)	ID (mm)	BSPT	Price
MRT6-2T-RP	6	4	1/8	£3.59
MRT6-4T-RP	6	4	1/4	£3.67
MRT8-2T-RP	8	6	1/8	£4.00
MRT8-4T-RP	8	6	1/4	£4.00
MRT10-4T-RP	10	8	1/4	£5.03

POLYETHYLENE TUBE (LDPE)



- Natural colour
- Silicone-free
- Chemical resistant
- Highly flexible

See Section 10
page 421

Bronze & Brass Silencers

Bronze/brass and plastic noise reduction fittings for general compressed air use.

Technical Specifications

Maximum Pressure:	
- Bronze/Brass	12 bar (174 psi)
- Plastic	6 bar (87 psi)
Maximum Temperature	0°C to +70°C

Sintered Bronze Silencer



PGC: 110	BSPP	Price
SC-1	1/8	£2.00
SC-2	1/4	£2.93
SC-3	3/8	£5.40
SC-4	1/2	£7.40
SC-5	3/4	£14.25
SC-6	1	£22.65

Sintered Bronze & Brass Silencer



PGC: 110	BSP	Price
SP-1	1/8	£1.91
SP-4	1/4	£6.11
SP-2	3/8	£2.19
SP-3	1/2	£4.39
SP-5	3/4	£10.45
SP-6	1	£17.91

Sintered Bronze & Brass Exhaust Silencer



PGC: 110	BSP	Price
SVE-1	1/8	£6.11
SVE-2	1/4	£6.73
SVE-3	3/8	£11.52
SVE-4	1/2	£12.16
SVE-5	3/4	£28.79
SVE-6	1	£40.14

Sintered Bronze & Brass Silencer
Male Thread BSPP/Metric



PGC: 110	Thread	Price
SE-1	1/8	£3.00
SE-2	1/4	£3.63
SE-3	3/8	£7.18
SE-4	1/2	£9.19
SE-5	3/4	£17.76
SE-6	1	£22.58
SE-7	M5	£3.00
SE-8	1/8 BSP Female	£3.77

Wire Mesh/Brass Compact Silencer

Male Thread BSPP/Metric



PGC: 110	Thread	Price
SFE-1	1/8	£2.27
SFE-2	1/4	£2.74
SFE-3	3/8	£5.25
SFE-4	1/2	£6.94
SFE-5	3/4	£11.52
SFE-6	1	£20.24
SFE-7	M5	£2.06

Plastic High Flow Silencer



PGC: 110	BSP	Price
SPL-1	1/8	£3.00
SPL-2	1/4	£3.77
SPL-3	3/8	£7.18
SPL-4	1/2	£7.18
SPL-5	3/4	£27.22
SPL-6	1	£27.22
SPL-7	1/8 Female	£3.77

08



Brass Adaptors

Hose Tail

Male Thread BSPT



PGC: 310	ID (")	BSPT	Price
HT2-2TB	1/8	1/8	£1.62
HT2-4TB	1/8	1/4	£1.80
HT3-2TB	3/16	1/8	£1.68
HT3-4TB	3/16	1/4	£1.68
HT4-2TB	1/4	1/8	£1.68
HT4-4TB	1/4	1/4	£1.48
HT4-6TB	1/4	3/8	£2.46
HT4-8TB	1/4	1/2	£4.33
HT5-2TB	5/16	1/8	£1.69
HT5-4TB	5/16	1/4	£1.48
HT5-6TB	5/16	3/8	£2.67
HT5-8TB	5/16	1/2	£4.01
HT6-2TB	3/8	1/8	£1.80
HT6-4TB	3/8	1/4	£1.48
HT6-6TB	3/8	3/8	£2.46
HT6-8TB	3/8	1/2	£3.83
HT6-12TB	3/8	3/4	£6.89
HT8-4TB	1/2	1/4	£1.65
HT8-6TB	1/2	3/8	£2.65
HT8-8TB	1/2	1/2	£3.27
HT8-12TB	1/2	3/4	£5.91
HT8-16TB	1/2	1	£11.70
HT10-6TB	5/8	3/8	£3.51
HT10-8TB	5/8	1/2	£7.10
HT10-12TB	5/8	3/4	£7.21
HT12-6TB	3/4	3/8	£7.09
HT12-8TB	3/4	1/2	£4.74
HT12-12TB	3/4	3/4	£6.09
HT12-16TB	3/4	1	£8.19
HT16-8TB	1	1/2	£8.69
HT16-12TB	1	3/4	£8.61
HT16-16TB	1	1	£9.18
HT16-20TB	1	1 1/4	£16.60
HT20-16TB	1 1/4	1	£14.10
HT20-20TB	1 1/4	1 1/4	£16.60
HT24-24TB	1 1/2	1 1/2	£29.48
HT32-32TB	2	2	£38.59
HT40-40TB	2 1/2	2 1/2	£105.27

Brass Hose Tail

Nickel Plated
Male Thread BSPT



PGC: 310	ID (")	BSPT	Price
HT2-2TB-NP	1/8	1/8	£2.02
HT2-4TB-NP	1/8	1/4	£2.24
HT3-2TB-NP	3/16	1/8	£2.10
HT3-4TB-NP	3/16	1/4	£2.10
HT4-2TB-NP	1/4	1/8	£2.10
HT4-4TB-NP	1/4	1/4	£2.08
HT4-6TB-NP	1/4	3/8	£3.09
HT4-8TB-NP	1/4	1/2	£5.41
HT5-2TB-NP	5/16	1/8	£2.11
HT5-4TB-NP	5/16	1/4	£3.22
HT5-6TB-NP	5/16	3/8	£3.33
HT5-8TB-NP	5/16	1/2	£5.01
HT6-2TB-NP	3/8	1/8	£2.24
HT6-4TB-NP	3/8	1/4	£3.22
HT6-6TB-NP	3/8	3/8	£3.09
HT6-8TB-NP	3/8	1/2	£4.79
HT6-12TB-NP	3/8	3/4	£8.63
HT8-4TB-NP	1/2	1/4	£2.06
HT8-6TB-NP	1/2	3/8	£3.32
HT8-8TB-NP	1/2	1/2	£4.09
HT8-12TB-NP	1/2	3/4	£7.38
HT8-16TB-NP	1/2	1*	£14.62
HT10-6TB-NP	5/8	3/8	£4.38
HT10-8TB-NP	5/8	1/2	£8.87
HT10-12TB-NP	5/8	3/4	£9.01
HT12-6TB-NP	3/4	3/8	£8.86
HT12-8TB-NP	3/4	1/2	£5.93
HT12-12TB-NP	3/4	3/4	£7.61
HT12-16TB-NP	3/4	1*	£10.23
HT16-8TB-NP	1*	1/2	£10.86
HT16-12TB-NP	1*	3/4	£10.76
HT16-16TB-NP	1*	1*	£11.47
HT16-20TB-NP	1*	1 1/4	£20.76
HT20-16TB-NP	1 1/4	1*	£17.62
HT20-20TB-NP	1 1/4	1 1/4	£20.76
HT24-24TB-NP	1 1/2	1 1/2	£36.85
HT32-32TB-NP	2*	2*	£42.16

Brass Swivel Nut and Tail

60° Cone Seat
BSPP



PGC: 311	ID (")	BSPP	Price
SNT2-2	1/8	1/8	£2.53
SNT3-2	3/16	1/8	£2.53
SNT3-4	3/16	1/4	£2.73
SNT4-2	1/4	1/8	£2.53
SNT4-4	1/4	1/4	£2.73
SNT4-6	1/4	3/8	£3.86
SNT5-4	5/16	1/4	£2.68
SNT5-6	5/16	3/8	£3.86
SNT5-8	5/16	1/2	£5.71
SNT6-4	3/8	1/4	£2.73
SNT6-6	3/8	3/8	£2.78
SNT6-8	3/8	1/2	£5.71
SNT8-6	1/2	3/8	£3.86
SNT8-8	1/2	1/2	£5.71
SNT8-12	1/2	3/4	£10.16
SNT12-12	3/4	3/4	£10.16
SNT12-16	3/4	1	£14.91
SNT16-16	1	1	£14.91
SNT20-20	1 1/4	1 1/4	£41.87
SNT24-24	1 1/2	1 1/2	£60.92
SNT32-32	2	2	£66.99

Hose Tail Elbow

Male Thread BSPT



PGC: 310	ID (")	BSPT	Price
HTE4-2TB	1/4	1/8	£6.40
HTE4-4TB	1/4	1/4	£6.78
HTE5-2TB	5/16	1/8	£5.91
HTE5-4TB	5/16	1/4	£6.77
HTE6-2TB	3/8	1/8	£6.52
HTE6-4TB	3/8	1/4	£6.24
HTE8-4TB	1/2	1/4	£9.30

Hose Tail Elbow

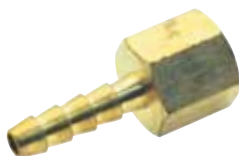
Female Thread BSPP



PGC: 310	ID (")	BSPP	Price
FHTE5-4PB	5/16	1/4	£8.81
FHTE6-4PB	3/8	1/4	£8.81
FHTE6-6PB	3/8	3/8	£11.45
FHTE8-6PB	1/2	3/8	£12.00

Female Hose Tail

Female Thread BSPP



PGC: 311	ID (")	BSPP	Price
FHT4-4FB	1/4	1/4	£3.32
FHT5-4FB	5/16	1/4	£3.32
FHT5-8FB	5/16	1/2	£7.71
FHT8-6FB	1/2	3/8	£4.18
FHT8-8FB	1/2	1/2	£17.62

Hose Repairer



PGC: 310	ID (")	Price
HR2B	1/8	£2.82
HR3B	3/16	£3.98
HR4B	1/4	£2.02
HR5B	5/16	£2.24
HR6B	3/8	£2.42
HR8B	1/2	£3.42
HR10B	5/8	£4.67
HR12B	3/4	£8.36
HR16B	1	£11.54
HR20B	1 1/4	£31.96
HR24B	1 1/2	£26.18

Hose Repairer Tee Piece



PGC: 310	ID (")	Price
HRT4B	1/4	£7.66
HRT5B	5/16	£6.24
HRT6B	3/8	£5.96
HRT8B	1/2	£9.80

Hose Repairer Y Piece



PGC: 310	ID (")	Price
HR4B	1/4	£5.90
HR5B	5/16	£5.90
HR6B	3/8	£7.93
HR8B	1/2	£11.41

Hose Repairer Cross



PGC: 310	ID (")	Price
HRX4B	1/4	£11.70
HRX5B	5/16	£12.93
HRX6B	3/8	£14.28
HRX8B	1/2	£18.71

Barrel Nipple

Male Thread BSPT



PGC: 122	BSPT	Price
BN2B	1/8	£1.41
BN4B	1/4	£1.53
BN6B	3/8	£1.85
BN8B	1/2	£2.81
BN12B	3/4	£3.21
BN16B	1	£4.96
BN20B	1 1/4	£8.20
BN24B	1 1/2	£8.72

Hexagon Nipple

Male Thread NPT



PGC: 122	NPT 1	NPT 2	Price
HN2-2NB	1/8	1/8	£1.90
HN4-2NB	1/4	1/8	£2.34
HN4-4NB	1/4	1/4	£2.36
HN6-2NB	3/8	1/8	£1.30
HN6-4NB	3/8	1/4	£1.37
HN6-6NB	3/8	3/8	£3.94
HN8-2NB	1/2	1/8	£2.03
HN8-4NB	1/2	1/4	£2.17
HN8-6NB	1/2	3/8	£2.17
HN8-8NB	1/2	1/2	£4.72
HN12-4NB	3/4	1/4	£5.10
HN12-6NB	3/4	3/8	£5.14
HN12-8NB	3/4	1/2	£5.49
HN12-12NB	3/4	3/4	£8.39
HN16-8NB	1	1/2	£7.67
HN16-12NB	1	3/4	£7.67
HN16-16NB	1	1	£24.72

Hexagon Nipple

Male Thread BSPT



PGC: 122	BSPT 1	BSPT 2	Price
HN2-2TB	1/8	1/8	£1.73
HN4-2TB	1/4	1/8	£2.65
HN4-4TB	1/4	1/4	£2.14
HN6-2TB	3/8	1/8	£6.22
HN6-4TB	3/8	1/4	£2.46
HN6-6TB	3/8	3/8	£3.58
HN8-2TB	1/2	1/8	£7.04
HN8-4TB	1/2	1/4	£4.21
HN8-6TB	1/2	3/8	£4.21
HN8-8TB	1/2	1/2	£4.28
HN12-4TB	3/4	1/4	£7.77
HN12-6TB	3/4	3/8	£7.77
HN12-8TB	3/4	1/2	£7.77
HN12-12TB	3/4	3/4	£7.63
HN16-6TB	1	3/8	£23.19
HN16-8TB	1	1/2	£23.19
HN16-12TB	1	3/4	£23.19
HN16-16TB	1	1	£22.48
HN20-12TB	1 1/4	3/4	£26.57
HN20-20TB	1 1/4	1 1/4	£25.86
HN24-24TB	1 1/2	1 1/2	£30.56
HN32-32TB	2	2	£37.47

Male Adaptor

60° Cone Seat
BSPP



PGC: 312	BSPP 1	BSPP 2	Price
MM2-2B	1/8	1/8	£2.70
MM4-2B	1/4	1/8	£3.22
MM4-4B	1/4	1/4	£3.22
MM6-2B	3/8	1/8	£3.97
MM6-4B	3/8	1/4	£3.97
MM6-6B	3/8	3/8	£3.97
MM8-4B	1/2	1/4	£5.35
MM8-6B	1/2	3/8	£5.35
MM8-8B	1/2	1/2	£5.35
MM12-6B	3/4	3/8	£10.34
MM12-8B	3/4	1/2	£10.34
MM12-12B	3/4	3/4	£10.34
MM16-12B	1	3/4	£15.32
MM16-16B	1	1	£15.32

Hex Head Plug

Male Thread BSPP



PGC: 122	BSPP	Price
HP2PB	1/8	£2.28
HP4PB	1/4	£2.33
HP6PB	3/8	£2.56
HP8PB	1/2	£2.95
HP12PB	3/4	£5.85
HP16PB	1	£7.85
HP20PB	1 1/4	£9.51
HP24PB	1 1/2	£13.14
HP32PB	2	£21.73

Reducing Bush

Male Thread BSPP
Female Thread BSPP



PGC: 122	BSPP 1	BSPP 2	Price
RB4-2PB	1/4	1/8	£1.55
RB6-2PB	3/8	1/8	£2.68
RB6-4PB	3/8	1/4	£2.86
RB8-2PB	1/2	1/8	£3.16
RB8-4PB	1/2	1/4	£3.01
RB8-6PB	1/2	3/8	£2.89
RB12-4PB	3/4	1/4	£7.89
RB12-6PB	3/4	3/8	£7.89
RB12-8PB	3/4	1/2	£7.89
RB16-8PB	1	1/2	£10.92
RB16-12PB	1	3/4	£10.92

08

Male Adaptor

60° Cone Seat
BSPP to BSPT



PGC: 122	BSPP	BSPT	Price
MM2PTB	1/8	1/8	£1.48
MM4PTB	1/4	1/4	£1.90
MM6PTB	3/8	3/8	£2.29
MM8PTB	1/2	1/2	£2.81
MM12PTB	3/4	3/4	£5.59
MM16PTB	1	1	£16.45

Hex Head Plug

Male Thread NPT



PGC: 122	NPT	Price
HP2NB	1/8	£1.52
HP4NB	1/4	£1.58
HP6NB	3/8	£3.57
HP8NB	1/2	£4.74
HP12NB	3/4	£5.70
HP16NB	1	£6.69

Reducing Bush

Male Thread BSPT
Female Thread BSPP



PGC: 122	BSPT	BSPP	Price
RB4-2TB	1/4	1/8	£1.39
RB6-2TB	3/8	1/8	£2.12
RB6-4TB	3/8	1/4	£2.14
RB8-2TB	1/2	1/8	£3.29
RB8-4TB	1/2	1/4	£2.55
RB8-6TB	1/2	3/8	£2.55
RB12-2TB	3/4	1/8	£3.73
RB12-4TB	3/4	1/4	£4.24
RB12-6TB	3/4	3/8	£4.24
RB12-8TB	3/4	1/2	£4.24
RB16-4TB	1	1/4	£8.67
RB16-6TB	1	3/8	£8.43
RB16-8TB	1	1/2	£6.46
RB16-12TB	1	3/4	£5.61
RB20-4TB	1 1/4	1/4	£11.50
RB20-6TB	1 1/4	3/8	£11.50
RB20-8TB	1 1/4	1/2	£11.50
RB20-12TB	1 1/4	3/4	£8.52
RB20-16TB	1 1/4	1	£8.31
RB24-4TB	1 1/2	1/4	£18.34
RB24-6TB	1 1/2	3/8	£18.34
RB24-8TB	1 1/2	1/2	£16.17
RB24-16TB	1 1/2	1	£13.16
RB24-20TB	1 1/2	1 1/4	£11.94
RB32-6TB	2	3/8	£26.16
RB32-8TB	2	1/2	£26.63
RB32-12TB	2	3/4	£26.63
RB32-16TB	2	1	£24.53
RB32-20TB	2	1 1/4	£19.60
RB32-24TB	2	1 1/2	£18.64

Hex Head Plug

Male Thread BSPT



PGC: 122	BSPT	Price
HP2TB	1/8	£0.89
HP4TB	1/4	£1.34
HP6TB	3/8	£2.59
HP8TB	1/2	£4.76
HP12TB	3/4	£5.70
HP16TB	1	£6.69

Male Bulkhead

Male Thread BSPP



PGC: 122	BSPP	Price
BH2-2B	1/8	£3.86
BH4-4B	1/4	£4.09
BH6-6B	3/8	£4.86
BH8-8B	1/2	£6.59
BH12-12B	3/4	£9.47
BH16-16B	1	£14.94
BH20-20B	1 1/4	£52.30
BH24-24B	1 1/2	£53.71
BH32-32B	2	£90.40

Wade

Brass Adaptors

Reducing Bush

Male Thread NPT
Female Thread NPT



PGC: 122	Male NPT	Female NPT	Price
RB4-2NB	1/4	1/8	£1.50
RB6-2NB	3/8	1/8	£2.04
RB6-4NB	3/8	1/4	£2.06
RB8-2NB	1/2	1/8	£3.20
RB8-4NB	1/2	1/4	£2.89
RB8-6NB	1/2	3/8	£2.63
RB12-4NB	3/4	1/4	£4.73
RB12-6NB	3/4	3/8	£4.30
RB12-8NB	3/4	1/2	£4.30
RB16-4NB	1	1/4	£8.55
RB16-6NB	1	3/8	£8.10
RB16-8NB	1	1/2	£7.00
RB16-12NB	1	3/4	£7.00

Locknut

Female Thread BSPP



PGC: 122	BSPP	Price
LN2B	1/8	£0.55
LN4B	1/4	£0.72
LN6B	3/8	£0.94
LN8B	1/2	£1.41
LN10B	5/8	£10.77
LN12B	3/4	£2.65
LN14B	7/8	£4.49
LN16B	1	£5.25
LN20B	1 1/4	£10.79
LN24B	1 1/2	£12.13
LN32B	2	£13.46

Female Socket



PGC: 100	BSPP 1	BSPP 2	Price
110HEX	1/8	1/8	£2.89
111HEX	1/4	1/8	£6.56
112HEX	1/4	1/4	£2.32
113HEX	3/8	1/8	£5.52
114HEX	3/8	1/4	£4.63
115HEX	3/8	3/8	£5.54
117HEX	1/2	1/4	£6.01
118HEX	1/2	3/8	£6.88
119HEX	1/2	1/2	£10.88

Male Female Adaptor



PGC: 100	Male BSPP	Female BSPP	Price
121HEX	1/8	1/4	£3.46
123HEX	1/4	1/4	£2.70
124HEX	1/4	3/8	£9.54
125HEX	1/4	1/2	£5.08
126HEX	3/8	3/8	£5.06
127HEX	1/2	1/2	£7.37

Female Swivel Hose Tail



PGC: 100	Male BSPP	Female BSPP	Price
HSW01/162	3/16	1/4	£4.20
HSW03/162	1/4	1/4	£3.01
HSW05/162	5/16	1/4	£3.38
HSW5/242	5/16	3/8	£4.49
HSW08/242	3/8	3/8	£4.41
HSW11/322	1/2	1/2	£6.97

Blanking Cap



PGC: 100	BSPP	Price
1001BL	1/8	£2.52
1003BL	1/4	£1.90
1008BL	3/8	£2.36
1011BL	1/2	£7.57
1016BL	1"	£12.78

Male Hose Tail



PGC: 100	Male BSPP	Female BSPP	Price
HT01/083	3/16	1/8	£6.99
HT01/163	3/16	1/4	£5.17
HT03/163	1/4	1/4	£2.52
HT03/243	1/4	3/8	£2.80
HT05/323	5/16	1/2	£7.78

Locknut

Female Thread Metric



PGC: 102	Thread	Price
ML10-10	M10 x 1	£0.62
ML12-10	M12 x 1	£0.62
ML16-15	M16 x 1.5	£0.90
ML18-15	M18 x 1.5	£1.42
ML20-15	M20 x 1.5	£2.23
ML22-15	M22 x 1.5	£2.26
ML30-15	M30 x 1.5	£2.26

08



Distribution Manifolds



08

Single Aluminium Manifold

1/8 BSP Inlet x M5 Outlet

PGC: 392	No. of Outlets	Price
AMS1/8-M5-2	2	£5.62
AMS1/8-M5-6	6	£9.51

1/4 BSP Inlet x 1/8 BSP Outlet

PGC: 392	No. of Outlets	Price
AMS1/4-1/8-2	2	£11.19
AMS1/4-1/8-3	3	£13.60
AMS1/4-1/8-4	4	£14.34
AMS1/4-1/8-5	5	£16.75
AMS1/4-1/8-6	6	£19.22

3/8 BSP Inlet x 1/8 BSP Outlet

PGC: 392	No. of Outlets	Price
AMS3/8-1/8-3	3	£11.61
AMS3/8-1/8-4	4	£15.70
AMS3/8-1/8-5	5	£13.65
AMS3/8-1/8-6	6	£15.70

3/8 BSP Inlet x 1/4 BSP Outlet

PGC: 392	No. of Outlets	Price
AMS3/8-1/4-2	2	£13.08
AMS3/8-1/4-3	3	£13.97
AMS3/8-1/4-4	4	£17.43
AMS3/8-1/4-5	5	£20.16
AMS3/8-1/4-6	6	£22.95

1/2 BSP Inlet x 1/4 BSP Outlet

PGC: 392	No. of Outlets	Price
AMS1/2-1/4-2	2	£13.44
AMS1/2-1/4-3	3	£22.95
AMS1/2-1/4-4	4	£29.14
AMS1/2-1/4-5	5	£33.34
AMS1/2-1/4-6	6	£38.59

Double Aluminium Manifold

1/2 BSP Inlet x 3/8 BSP Outlet

PGC: 392	No. of Outlets	Price
AMS1/2-3/8-2	2	£18.01
AMS1/2-3/8-3	3	£24.15
AMS1/2-3/8-4	4	£30.66
AMS1/2-3/8-5	5	£35.07
AMS1/2-3/8-6	6	£40.64

1/2 BSP Inlet x 1/2 BSP Outlet

PGC: 392	No. of Outlets	Price
AMS1/2-1/2-2	2	£18.90
AMS1/2-1/2-3	3	£25.26
AMS1/2-1/2-4	4	£32.24
AMS1/2-1/2-5	5	£36.70
AMS1/2-1/2-6	6	£42.69

1/8 BSP Inlet x M5 Outlet

PGC: 392	No. of Outlets	Price
AMD1/8-M5-2	2	£6.62

1/4 BSP Inlet x 1/8 BSP Outlet

PGC: 392	No. of Outlets	Price
AMD1/4-1/8-2	2	£12.24
AMD1/4-1/8-3	3	£14.34
AMD1/4-1/8-4	4	£14.13
AMD1/4-1/8-5	5	£16.44

3/8 BSP Inlet x 1/8 BSP Outlet

PGC: 392	No. of Outlets	Price
AMD3/8-1/8-3	3	£10.87
AMD3/8-1/8-4	4	£14.55
AMD3/8-1/8-5	5	£19.06

3/8 BSP Inlet x 1/4 BSP Outlet

PGC: 392	No. of Outlets	Price
AMD3/8-1/4-2	2	£12.60
AMD3/8-1/4-3	3	£17.12
AMD3/8-1/4-4	4	£21.84
AMD3/8-1/4-5	5	£20.64

1/2 BSP Inlet x 1/4 BSP Outlet

PGC: 392	No. of Outlets	Price
AMD1/2-1/4-2	2	£19.38
AMD1/2-1/4-3	3	£25.41
AMD1/2-1/4-4	4	£31.61
AMD1/2-1/4-5	5	£37.23



Minifolds®

- Originally developed for instrument air supplies within control panels, minifolds are now available for the distribution of gaseous and liquid media in petrochemical, marine and general industrial applications
- Minifold blocks have tapped inlet connections at both ends, connect to one and plug the other, or connect minifolds in series
- Their compact construction makes them ideal for use in panels and confined spaces

Aluminium & Stainless Steel Minifolds®

Series 940



PGC: 301	Number of Outlets	Connection Thread	Inlet (")	Outlet	Price
940-05-125	5	BSP	3/8	1/4" OD	£160.91
940-10-125	10	BSP	3/8	1/4" OD	£332.12
940-05-127	5	BSP	3/8	6 mm OD	£160.91
940-10-127	10	BSP	3/8	6 mm OD	£332.12

Aluminium Minifolds®

Series 971



PGC: 301	Number of Outlets	Connection Thread	Inlet (")	Outlet (")	Price
971-05-251	5	BSP	1/2	1/4	£124.56
971-10-251	10	BSP	1/2	1/4	£241.09
971-05-263	5	NPT	1/2	1/4	£124.60
971-10-263	10	NPT	1/2	1/4	£241.09

Stainless Steel Minifolds®

Series 950



PGC: 301	Number of Outlets	Connection Thread	Inlet (")	Outlet	Price
950-10-175	10	BSP	3/4	1/4" OD	£304.98
950-20-175	20	BSP	3/4	1/4" OD	£599.01
950-10-177	10	BSP	3/4	6 mm OD	£304.98
950-20-177	20	BSP	3/4	6 mm OD	£599.01

Series 975



PGC: 301	Number of Outlets	Connection Thread	Inlet (")	Outlet (")	Price
975-05-272	5	BSP	3/4	3/8	£187.05
975-10-272	10	BSP	3/4	3/8	£357.23
975-05-284	5	NPT	3/4	3/8	£187.05
975-10-284	10	NPT	3/4	3/8	£357.23





Nylon Hose Fittings

Tefen fittings are suitable for connecting plastic, rubber or soft PVC hoses in industrial and domestic applications.

- Manufactured from high quality Food Grade Nylon 66 (Food Approvals NSF/ANSI 61 Health Effects) they ensure high temperature and high pressure performance
- They are machined and welded to ensure excellent reliability and long life, even with prolonged UV exposure
- Nylon is chemically compatible with diesel fuel, hydraulic oils, methanol, petroleum and sodium hydroxide

08

 **Temperature Range:**
-20°C to +110°C
(subject to application)

 **Working Pressure:**
14 bar (200 psi) at +20°C



Blanking Plug

Male Thread BSPT



PGC: 343	BSPT	Price
BP2NF	1/8	£0.85
BP4NF	1/4	£0.90
BP6NF	3/8	£1.01
BP8NF	1/2	£1.01

Nylon 66 Adaptors

Hexagon Nipple

Male Thread BSPT



PGC: 343	BSPT	Price
HN2NF	1/8	£1.53
HN4NF	1/4	£1.58
HN6NF	3/8	£1.80
HN8NF	1/2	£1.80

Socket

Female Thread BSPT



PGC: 343	BSPT	Price
S2NF	1/8	£1.54
S4NF	1/4	£1.59
S6NF	3/8	£1.85
S8NF	1/2	£2.80

Blanking Cap

Female Thread BSPT



PGC: 343	BSPT	Price
C2NF	1/8	£1.11
C4NF	1/4	£1.20
C6NF	3/8	£1.48
C8NF	1/2	£1.52
C12NF	3/4	£1.79

Reducing Hexagon Nipple

Male Thread BSPT



PGC: 343	BSPT 1	BSPT 2	Price
HN4-2NF	1/4	1/8	£1.33
HN6-4NF	3/8	1/4	£1.64
HN8-4NF	1/2	1/4	£1.81
HN8-6NF	1/2	3/8	£1.86

Equal Tee

Male Thread BSPT



PGC: 343	BSPT	Price
T4NF	1/4	£2.50
T6NF	3/8	£2.92
T8NF	1/2	£4.19

Female Reducing Socket

Female Thread BSPT



PGC: 343	BSPT 1	BSPT 2	Price
S4-2NF	1/4	1/8	£1.63
S6-2NF	3/8	1/8	£1.80
S6-4NF	3/8	1/4	£1.80
S8-4NF	1/2	1/4	£2.73
S8-6NF	1/2	3/8	£2.79



Nylon Hose Fittings

Reducing Bush

Male Thread BSPT
Female Thread BSPT



PGC: 343	BSPT	BSPT	Price
RB4-2NF	1/4	1/8	£1.88
RB6-2NF	3/8	1/8	£1.79
RB6-4NF	3/8	1/4	£1.79
RB8-2NF	1/2	1/8	£2.72
RB8-4NF	1/2	1/4	£2.77
RB8-6NF	1/2	3/8	£2.87
RB12-4NF	3/4	1/4	£3.61
RB12-6NF	3/4	3/8	£3.75
RB12-8NF	3/4	1/2	£3.81

Equal Elbow

Male Thread BSPT



PGC: 343	BSPT	Price
E2NF	1/8	£1.42
E4NF	1/4	£1.57
E6NF	3/8	£1.79
E8NF	1/2	£2.14

Reducing Elbow

Male Thread BSPT



PGC: 343	BSPT 1	BSPT 2	Price
RE4-2NF	1/4	1/8	£1.59
RE6-4NF	3/4	1/4	£1.81

Reducing Run Tee

Male Thread BSPT



PGC: 343	BSPT 1	BSPT 2	Price
RRT6-4NF	3/8	1/4	£2.92

Reducing Branch Tee

Male Thread BSPT



PGC: 343	BSPT 1	BSPT 2	Price
RBT4-2NF	1/4	1/8	£2.45
RBT6-4NF	3/8	1/4	£2.92
RBT8-6NF	1/2	3/8	£3.97

Male Female Adaptor

Male Thread BSPT
Female Thread BSPT



PGC: 343	BSPT	BSPT	Price
MF2-4NF	1/8	1/4	£1.53
MF2-6NF	1/8	3/8	£1.79
MF4-4NF	1/4	1/4	£1.62
MF4-6NF	1/4	3/8	£1.79
MF4-8NF	1/4	1/2	£2.89
MF6-2NF	3/8	1/8	£1.79
MF6-4NF	3/8	1/4	£1.79
MF6-6NF	3/8	3/8	£1.84
MF6-8NF	3/8	1/2	£2.89
MF8-6NF	1/2	3/8	£2.10
MF8-8NF	1/2	1/2	£3.03

Nylon 66 Hosetail Adaptors

Swivel Nut & Tail

Female Thread BSPP



Maximum Temperature: +90°C



PGC: 343	ID (")	BSPP	Price
SNT2-2NF	1/8	1/8	£1.57
SNT2-4NF	1/8	1/4	£1.62
SNT3-2NF	3/16	1/8	£1.57
SNT3-4NF	3/16	1/4	£1.62
SNT3-6NF	3/16	3/8	£1.89
SNT4-4NF	1/4	1/4	£1.62
SNT4-6NF	1/4	3/8	£1.89
SNT4-8NF	1/4	1/2	£2.10
SNT5-4NF	5/16	1/4	£1.79
SNT5-6NF	5/16	3/8	£2.10
SNT5-8NF	5/16	1/2	£2.21
SNT6-6NF	3/8	3/8	£2.10
SNT6-8NF	3/8	1/2	£2.21
SNT8-8NF	1/2	1/2	£2.21
SNT6-12NF	3/8	3/4	£2.42
SNT8-12NF	1/2	3/4	£2.57
SNT10-12NF	5/8	3/4	£2.67
SNT12-12NF	3/4	3/4	£2.67

Hose Tail

Male Thread BSPT



PGC: 343	ID (")	BSPT	Price
HT2-2NF	1/8	1/8	£0.81
HT2-4NF	1/8	1/4	£0.86
HT3-2NF	3/16	1/8	£0.81
HT3-4NF	3/16	1/4	£0.86
HT4-2NF	1/4	1/8	£0.86
HT4-4NF	1/4	1/4	£0.90
HT4-6NF	1/4	3/8	£0.90
HT4-8NF	1/4	1/2	£0.95
HT5-2NF	5/16	1/8	£0.90
HT5-4NF	5/16	1/4	£0.95
HT5-6NF	5/16	3/8	£0.95
HT5-8NF	5/16	1/2	£1.01
HT6-4NF	3/8	1/4	£1.01
HT6-6NF	3/8	3/8	£1.12
HT6-8NF	3/8	1/2	£1.12
HT6-12NF	3/8	3/4	£1.23
HT8-4NF	1/2	1/4	£1.12
HT8-6NF	1/2	3/8	£1.12
HT8-8NF	1/2	1/2	£1.23
HT8-12NF	1/2	3/4	£1.23
HT10-8NF	5/8	1/2	£1.23
HT10-12NF	5/8	3/4	£1.33
HT12-8NF	3/4	1/2	£1.33
HT12-12NF	3/4	3/4	£1.43

Hose Tail Elbow

Male Thread BSPT



PGC: 343	ID (")	BSPT	Price
HTE2-2NF	1/8	1/8	£0.90
HTE2-4NF	1/8	1/4	£0.95
HTE3-2NF	3/16	1/8	£0.90
HTE3-4NF	3/16	1/4	£0.95
HTE4-2NF	1/4	1/8	£0.90
HTE4-4NF	1/4	1/4	£0.95
HTE4-6NF	1/4	3/8	£1.00
HTE4-8NF	1/4	1/2	£1.00
HTE5-2NF	5/16	1/8	£1.00
HTE5-4NF	5/16	1/4	£1.11
HTE5-6NF	5/16	3/8	£1.11
HTE5-8NF	5/16	1/2	£1.22
HTE6-4NF	3/8	1/4	£1.22
HTE6-6NF	3/8	3/8	£1.22
HTE6-8NF	3/8	1/2	£1.27
HTE6-12NF	3/8	3/4	£1.42
HTE8-4NF	1/2	1/4	£1.27
HTE8-6NF	1/2	3/8	£1.27
HTE8-8NF	1/2	1/2	£1.42
HTE8-12NF	1/2	3/4	£1.42
HTE10-8NF	5/8	1/2	£1.53
HTE10-12NF	5/8	3/4	£1.58
HTE12-8NF	3/4	1/2	£1.58
HTE12-12NF	3/4	3/4	£1.63

08



Male Branch Tee Hose Tail

Male Thread BSPT



PGC: 343	ID (")	BSPT	Price
HRMBT2-2NF	1/8	1/8	£0.86
HRMBT3-2NF	3/16	1/8	£0.86
HRMBT3-4NF	3/16	1/4	£0.91
HRMBT4-2NF	1/4	1/8	£0.91
HRMBT4-4NF	1/4	1/4	£0.97
HRMBT4-6NF	1/4	3/8	£1.12
HRMBT4-8NF	1/4	1/2	£1.12
HRMBT5-2NF	5/16	1/8	£1.12
HRMBT5-4NF	5/16	1/4	£1.23
HRMBT5-6NF	5/16	3/8	£1.28
HRMBT6-4NF	3/8	1/4	£1.28
HRMBT6-6NF	3/8	3/8	£1.33
HRMBT6-8NF	3/8	1/2	£1.33
HRMBT8-4NF	1/2	1/4	£1.28
HRMBT8-6NF	1/2	3/8	£1.33
HRMBT8-8NF	1/2	1/2	£1.33
HRMBT8-12NF	1/2	3/4	£1.44
HRMBT10-8NF	5/8	1/2	£1.60
HRMBT10-12NF	5/8	3/4	£1.64
HRMBT12-8NF	3/4	1/2	£1.64
HRMBT12-12NF	3/4	3/4	£1.81

Reducing Hose Repairer



PGC: 343	ID 1 (")	ID 2 (")	Price
HR3-2NF	3/16	1/8	£0.63
HR4-2NF	1/4	1/8	£0.80
HR4-3NF	1/4	3/16	£0.80
HR5-3NF	5/16	3/16	£0.85
HR5-4NF	5/16	1/4	£0.85
HR6-4NF	3/8	1/4	£0.85
HR6-5NF	3/8	5/16	£0.90
HR8-5NF	1/2	5/16	£0.90
HR8-6NF	1/2	3/8	£0.94
HR10-8NF	5/8	1/2	£1.00
HR12-10NF	3/4	5/8	£1.11

Y-Piece Hose Repairer



PGC: 343	ID (")	Price
HR2NF	1/8	£1.57
HR4NF	1/4	£1.79
HR5NF	5/16	£1.79

Hose Repairer Elbow



PGC: 343	ID (")	Price
HRE2NF	1/8	£0.68
HRE3NF	3/16	£0.85
HRE4NF	1/4	£0.90
HRE5NF	5/16	£1.22
HRE6NF	3/8	£1.11
HRE8NF	1/2	£1.22
HRE10NF	5/8	£1.32
HRE12NF	3/4	£1.48

Hose Repairer Tee



PGC: 343	ID (")	Price
HRT2NF	1/8	£0.85
HRT3NF	3/16	£0.90
HRT4NF	1/4	£0.95
HRT5NF	5/16	£1.11
HRT6NF	3/8	£1.22
HRT8NF	1/2	£1.27
HRT10NF	5/8	£1.58
HRT12NF	3/4	£1.63

Reducing Hose Repairer Elbow



PGC: 343	ID 1 (")	ID 2 (")	Price
HRE3-2NF	3/16	1/8	£0.85
HRE4-3NF	1/4	3/16	£0.90
HRE5-4NF	5/16	1/4	£1.22
HRE6-5NF	3/8	5/16	£1.00
HRE8-6NF	1/2	3/8	£1.11
HRE12-10NF	3/4	5/8	£1.32

Reducing Hose Repairer Tee



PGC: 343	ID 1 (")	ID 2 (")	Price
HRT3-2NF	3/16	1/8	£0.91
HRT4-3NF	1/4	3/16	£0.97
HRT5-4NF	5/16	1/4	£1.12
HRT6-5NF	3/8	5/16	£1.23
HRT8-6NF	1/2	3/8	£1.28
HRT12-10NF	3/4	5/8	£1.81

Nylon 66 Hose Repairers

Hose Repairer



PGC: 343	ID (")	Price
HR2NF	1/8	£0.80
HR3NF	3/16	£0.80
HR4NF	1/4	£0.80
HR5NF	5/16	£0.85
HR6NF	3/8	£0.85
HR8NF	1/2	£0.90
HR10NF	5/8	£0.94
HR12NF	3/4	£1.00



Cam & Groove Quick Couplings

Aluminium Couplings

Type A Plug

Female Thread BSPP



PGC: 472	BSPP	Price
A12-AU	1/2	£5.02
A34-AU	3/4	£5.02
A1-AU	1	£5.32
A114-AU	1 1/4	£6.35
A112-AU	1 1/2	£6.91
A2-AU	2	£7.34
A212-AU	2 1/2	£7.32
A3-AU	3	£7.32
A4-AU	4	£11.30
A6-AU	6	£13.19

Type B Lever Coupling

Male Thread BSPT



PGC: 472	BSPT	Price
B12-AU	1/2	£11.13
B34-AU	3/4	£11.13
B1-AU	1	£11.81
B114-AU	1 1/4	£14.08
B112-AU	1 1/2	£15.32
B2-AU	2	£17.01
B212-AU	2 1/2	£16.24
B3-AU	3	£25.09
B4-AU	4	£29.29
B6-AU	6	£89.67

Type C Hose Tail Lever Coupling



PGC: 472	Size (")	Price
C12-AU	1/2	£9.16
C34-AU	3/4	£9.16
C1-AU	1	£11.21
C114-AU	1 1/4	£13.87
C112-AU	1 1/2	£14.44
C2-AU	2	£18.10
C212-AU	2 1/2	£24.75
C3-AU	3	£28.55
C4-AU	4	£39.36
C6-AU	6	£92.56

Type D Lever Coupling

Female Thread BSPP



PGC: 472	BSPP	Price
D12-AU	1/2	£11.61
D34-AU	3/4	£11.61
D1-AU	1	£12.30
D114-AU	1 1/4	£15.39
D112-AU	1 1/2	£15.98
D2-AU	2	£16.90
D212-AU	2 1/2	£24.96
D3-AU	3	£27.25
D4-AU	4	£41.44
D6-AU	6	£91.06

Female Thread NPT

PGC: 472	NPT	Price
A12-AU-NPT	1/2	£5.43
A34-AU-NPT	3/4	£5.43
A1-AU-NPT	1	£5.74
A114-AU-NPT	1 1/4	£6.76
A112-AU-NPT	1 1/2	£7.33
A2-AU-NPT	2	£7.73
A212-AU-NPT	2 1/2	£7.73
A3-AU-NPT	3	£11.72
A4-AU-NPT	4	£13.61
A6-AU-NPT	6	£40.81

Male Thread NPT

PGC: 472	NPT	Price
B12-AU-NPT	1/2	£12.21
B34-AU-NPT	3/4	£12.21
B1-AU-NPT	1	£12.90
B114-AU-NPT	1 1/4	£16.96
B112-AU-NPT	1 1/2	£17.04
B2-AU-NPT	2	£19.03
B212-AU-NPT	2 1/2	£25.86
B3-AU-NPT	3	£30.32
B4-AU-NPT	4	£45.18
B6-AU-NPT	6	£103.26

**1/2" sizes of Lever Couplings
are only supplied
with one locking
arm.**



Female Thread NPT

PGC: 472	NPT	Price
D12-AU-NPT	1/2	£12.79
D34-AU-NPT	3/4	£12.79
D1-AU-NPT	1	£13.84
D114-AU-NPT	1 1/4	£17.24
D112-AU-NPT	1 1/2	£17.88
D2-AU-NPT	2	£18.81
D212-AU-NPT	2 1/2	£28.08
D3-AU-NPT	3	£30.51
D4-AU-NPT	4	£46.62
D6-AU-NPT	6	£102.30

Type E Hose Tail



PGC: 472	Size (")	Price
E12-AU	1/2	£4.45
E34-AU	3/4	£4.45
E1-AU	1	£5.87
E114-AU	1 1/4	£7.10
E112-AU	1 1/2	£6.71
E2-AU	2	£9.24
E212-AU	2 1/2	£16.80
E3-AU	3	£18.15
E4-AU	4	£34.95
E6-AU	6	£70.52

Type F Plug

Male Thread BSPT



PGC: 472	BSPT	Price
F12-AU	1/2	£5.75
F34-AU	3/4	£5.75
F1-AU	1	£6.04
F114-AU	1 1/4	£8.77
F112-AU	1 1/2	£7.51
F2-AU	2	£9.55
F212-AU	2 1/2	£17.68
F3-AU	3	£20.56
F4-AU	4	£27.38
F6-AU	6	£71.06

Dust Plug



PGC: 472	Size (")	Price
DP12-AU	1/2	£5.18
DP34-AU	3/4	£5.18
DP1-AU	1	£5.37
DP114-AU	1 1/4	£5.43
DP112-AU	1 1/2	£5.68
DP2-AU	2	£7.28
DP212-AU	2 1/2	£22.25
DP3-AU	3	£12.28
DP4-AU	4	£20.07
DP6-AU	6	£43.46

Lever Stop



PGC: 472	Size (")	Price
DC12-AU	1/2	£9.57
DC34-AU	3/4	£9.57
DC1-AU	1	£10.53
DC114-AU	1 1/4	£13.03
DC112-AU	1 1/2	£13.40
DC2-AU	2	£15.29
DC212-AU	2 1/2	£18.79
DC3-AU	3	£22.36
DC4-AU	4	£27.50
DC6-AU	6	£74.52

Male Thread NPT

Part No.	NPT	Price
F12-AU-NPT	1/2	£6.49
F34-AU-NPT	3/4	£6.49
F1-AU-NPT	1	£6.69
F114-AU-NPT	1 1/4	£9.84
F112-AU-NPT	1 1/2	£8.43
F2-AU-NPT	2	£9.94
F212-AU-NPT	2 1/2	£19.83
F3-AU-NPT	3	£23.00
F4-AU-NPT	4	£30.74
F6-AU-NPT	6	£79.87

Polypropylene Couplings

Type A Plug

Female Thread BSPP



PGC: 472	BSPP	Price
A12-PP	1/2	£2.42
A34-PP	3/4	£2.42
A1-PP	1	£2.59
A114-PP	1 1/4	£4.63
A112-PP	1 1/2	£4.63
A2-PP	2	£4.63
A3-PP	3	£11.61
A4-PP	4	£22.53

Type B Lever Coupling

Male Thread BSPT



PGC: 472	BSPT	Price
B12-PP	1/2	£8.10
B34-PP	3/4	£9.31
B1-PP	1	£10.59
B114-PP	1 1/4	£15.84
B112-PP	1 1/2	£15.81
B2-PP	2	£17.10
B3-PP	3	£27.36

Type C Hose Tail Lever Coupling



PGC: 472	Size (")	Price
C12-PP	1/2	£8.63
C34-PP	3/4	£9.85
C1-PP	1	£11.38
C114-PP	1 1/4	£17.21
C112-PP	1 1/2	£15.71
C2-PP	2	£18.60
C3-PP	3	£29.95
C4-PP	4	£55.75

Type D Lever Coupling

Female Thread BSPP



PGC: 472	BSPP	Price
D12-PP	1/2	£8.63
D34-PP	3/4	£8.63
D1-PP	1	£10.40
D114-PP	1 1/4	£17.22
D112-PP	1 1/2	£16.41
D2-PP	2	£19.53
D3-PP	3	£30.16
D4-PP	4	£52.61

Female Thread NPT

PGC: 472	NPT	Price
A12-PP-NPT	1/2	£2.58
A34-PP-NPT	3/4	£2.58
A1-PP-NPT	1	£2.69
A114-PP-NPT	1 1/4	£5.06
A112-PP-NPT	1 1/2	£5.06
A2-PP-NPT	2	£5.06
A3-PP-NPT	3	£12.32
A4-PP-NPT	4	£24.03

Male Thread NPT

PGC: 472	NPT	Price
B12-PP-NPT	1/2	£8.60
B34-PP-NPT	3/4	£8.60
B1-PP-NPT	1	£9.88
B114-PP-NPT	1 1/4	£14.96
B112-PP-NPT	1 1/2	£16.94
B2-PP-NPT	2	£18.28
B3-PP-NPT	3	£29.12
B4-PP-NPT	4	£52.83



1/2" sizes of Lever Couplings are only supplied with one locking arm.

Female Thread NPT

PGC: 472	NPT	Price
D12-PP-NPT	1/2	£9.14
D34-PP-NPT	3/4	£9.14
D1-PP-NPT	1	£11.09
D114-PP-NPT	1 1/4	£16.12
D112-PP-NPT	1 1/2	£17.58
D2-PP-NPT	2	£20.80
D3-PP-NPT	3	£32.24
D4-PP-NPT	4	£56.14

08

Type E Hose Tail



PGC: 472	Size (")	Price
E12-PP	1/2	£2.08
E34-PP	3/4	£2.08
E1-PP	1	£2.39
E114-PP	1 1/4	£4.32
E112-PP	1 1/2	£5.18
E2-PP	2	£9.28
E3-PP	3	£9.96
E4-PP	4	£19.55

Type F Plug

Male Thread BSPT



PGC: 472	BSPT	Price
F12-PP	1/2	£2.14
F34-PP	3/4	£2.14
F1-PP	1	£2.19
F114-PP	1 1/4	£4.16
F112-PP	1 1/2	£4.16
F2-PP	2	£5.61
F3-PP	3	£9.24
F4-PP	4	£20.78

Dust Plug



PGC: 472	Size (")	Price
DP34-PP	3/4	£2.28
DP1-PP	1	£2.54
DP114-PP	1 1/4	£4.44
DP112-PP	1 1/2	£4.44
DP2-PP	2	£5.66
DP3-PP	3	£7.99

Lever Stop



PGC: 472	Size (")	Price
DC34-PP	3/4	£9.31
DC1-PP	1	£10.61
DC114-PP	1 1/4	£16.10
DC112-PP	1 1/2	£14.73
DC2-PP	2	£16.71
DC3-PP	3	£26.35

Male Thread NPT

PGC: 472	NPT	Price
F12-PP-NPT	1/2	£2.18
F34-PP-NPT	3/4	£2.18
F1-PP-NPT	1	£2.37
F114-PP-NPT	1 1/4	£4.35
F112-PP-NPT	1 1/2	£4.35
F2-PP-NPT	2	£5.95
F3-PP-NPT	3	£9.84
F4-PP-NPT	4	£22.22

316 Stainless Steel Couplings

Type A Plug

Female Thread BSPP



PGC: 472	BSPP	Price
A12-SS	1/2	£12.34
A34-SS	3/4	£12.34
A1-SS	1	£14.77
A114-SS	1 1/4	£20.58
A112-SS	1 1/2	£23.08
A2-SS	2	£30.76
A212-SS	2 1/2	£47.94
A3-SS	3	£54.22
A4-SS	4	£84.35
A6-SS	6	£175.28

Type B Lever Coupling

Male Thread BSPT



PGC: 472	BSPT	Price
B12-SS	1/2	£22.96
B34-SS	3/4	£22.96
B1-SS	1	£27.63
B114-SS	1 1/4	£36.51
B112-SS	1 1/2	£38.98
B2-SS	2	£41.66
B212-SS	2 1/2	£69.72
B3-SS	3	£78.12
B4-SS	4	£110.38

Type C Hose Tail Lever Coupling



PGC: 472	BSPT	Price
C12-SS	1/2	£18.72
C34-SS	3/4	£18.72
C1-SS	1	£24.62
C114-SS	1 1/4	£37.75
C112-SS	1 1/2	£40.10
C2-SS	2	£48.65
C212-SS	2 1/2	£66.61
C3-SS	3	£87.65
C4-SS	4	£129.54

Type D Lever Coupling

Female Thread BSPP



PGC: 472	BSPP	Price
D12-SS	1/2	£21.04
D34-SS	3/4	£21.04
D1-SS	1	£25.48
D114-SS	1 1/4	£35.66
D112-SS	1 1/2	£42.93
D2-SS	2	£47.96
D212-SS	2 1/2	£65.19
D3-SS	3	£92.56
D4-SS	4	£116.35
D6-SS	6	£308.25

Female Thread NPT

PGC: 472	NPT	Price
A12-SS-NPT	1/2	£13.81
A34-SS-NPT	3/4	£13.81
A1-SS-NPT	1	£16.53
A114-SS-NPT	1 1/4	£21.50
A112-SS-NPT	1 1/2	£25.27
A2-SS-NPT	2	£32.72
A212-SS-NPT	2 1/2	£53.67
A3-SS-NPT	3	£61.12

Male Thread NPT

PGC: 472	NPT	Price
B12-SS-NPT	1/2	£21.30
B34-SS-NPT	3/4	£21.30
B1-SS-NPT	1	£26.41
B114-SS-NPT	1 1/4	£40.21
B112-SS-NPT	1 1/2	£41.26
B2-SS-NPT	2	£46.91
B212-SS-NPT	2 1/2	£76.96
B3-SS-NPT	3	£87.97
B4-SS-NPT	4	£124.37

⚠️ 1/2" sizes of Lever Couplings are only supplied with one locking arm.

Female Thread NPT

PGC: 472	NPT	Price
D12-SS-NPT	1/2	£23.28
D34-SS-NPT	3/4	£23.28
D1-SS-NPT	1	£28.68
D114-SS-NPT	1 1/4	£40.24
D112-SS-NPT	1 1/2	£46.11
D2-SS-NPT	2	£50.96
D212-SS-NPT	2 1/2	£73.40
D3-SS-NPT	3	£97.22
D4-SS-NPT	4	£131.15

08

Type E Hose Tail



PGC: 472	Size (")	Price
E12-SS	1/2	£11.84
E34-SS	3/4	£11.84
E1-SS	1	£16.44
E114-SS	1 1/4	£23.28
E112-SS	1 1/2	£28.89
E2-SS	2	£40.88
E212-SS	2 1/2	£54.08
E3-SS	3	£71.00
E4-SS	4	£115.00

Type F Plug

Male Thread BSPT



PGC: 472	Size (")	Price
F12-SS	1/2	£15.58
F34-SS	3/4	£15.58
F1-SS	1	£19.47
F114-SS	1 1/4	£27.88
F112-SS	1 1/2	£32.82
F2-SS	2	£41.55
F212-SS	2 1/2	£65.52
F3-SS	3	£76.96
F4-SS	4	£124.69

Dust Plug



PGC: 472	Size (")	Price
DP12-SS	1/2	£8.73
DP34-SS	3/4	£8.73
DP1-SS	1	£9.77
DP114-SS	1 1/4	£17.37
DP112-SS	1 1/2	£17.37
DP2-SS	2	£24.62
DP212-SS	2 1/2	£39.41
DP3-SS	3	£46.80

Lever Stop



PGC: 472	Size (")	Price
DC12-SS	1/2	£18.09
DC34-SS	3/4	£18.09
DC1-SS	1	£21.45
DC114-SS	1 1/4	£28.68
DC112-SS	1 1/2	£31.82
DC2-SS	2	£37.55
DC212-SS	2 1/2	£70.72
DC3-SS	3	£72.68
DC4-SS	4	£86.80
DC6-SS	6	£146.81

Male Thread NPT

PGC: 472	NPT	Price
F12-SS-NPT	1/2	£15.67
F34-SS-NPT	3/4	£15.67
F1-SS-NPT	1	£20.26
F114-SS-NPT	1 1/4	£28.91
F112-SS-NPT	1 1/2	£33.89
F2-SS-NPT	2	£44.72
F212-SS-NPT	2 1/2	£72.68
F3-SS-NPT	3	£86.80
F4-SS-NPT	4	£136.53

Brass Couplings

Type A Plug

Female Thread BSPP



PGC: 472	BSPP	Price
A12-BR	1/2	£8.77
A34-BR	3/4	£8.77
A1-BR	1	£10.08
A114-BR	1 1/4	£12.59
A112-BR	1 1/2	£15.13
A2-BR	2	£19.43
A212-BR	2 1/2	£29.38
A3-BR	3	£33.44
A4-BR	4	£62.24
A6-BR	6	£131.21

Type B Lever Coupling

Male Thread BSPT



PGC: 472	BSPT	Price
B12-BR	1/2	£17.25
B34-BR	3/4	£17.25
B1-BR	1	£20.96
B114-BR	1 1/4	£22.88
B112-BR	1 1/2	£24.84
B2-BR	2	£30.23
B212-BR	2 1/2	£41.47
B3-BR	3	£50.76
B4-BR	4	£72.20

Type C Hose Tail Lever Coupling



PGC: 472	Size (")	Price
C12-BR	1/2	£17.41
C34-BR	3/4	£17.41
C1-BR	1	£18.43
C114-BR	1 1/4	£22.88
C112-BR	1 1/2	£24.84
C2-BR	2	£30.16
C212-BR	2 1/2	£41.04
C3-BR	3	£55.44
C4-BR	4	£79.98

Type D Lever Coupling

Female Thread BSPP



PGC: 472	BSPP	Price
D12-BR	1/2	£18.10
D34-BR	3/4	£18.10
D1-BR	1	£19.64
D114-BR	1 1/4	£22.88
D112-BR	1 1/2	£24.84
D2-BR	2	£30.16
D212-BR	2 1/2	£41.60
D3-BR	3	£56.56
D4-BR	4	£81.28

Female Thread NPT

PGC: 472	NPT	Price
A12-BR-NPT	1/2	£9.09
A34-BR-NPT	3/4	£9.09
A1-BR-NPT	1	£10.64
A114-BR-NPT	1 1/4	£13.32
A112-BR-NPT	1 1/2	£15.79
A2-BR-NPT	2	£20.58
A212-BR-NPT	2 1/2	£31.10
A3-BR-NPT	3	£35.54
A4-BR-NPT	4	£65.81
A5-BR-NPT	5	£136.66
A6-BR-NPT	6	£146.96

Male Thread NPT

PGC: 472	NPT	Price
B12-BR-NPT	1/2	£18.18
B34-BR-NPT	3/4	£18.18
B1-BR-NPT	1	£22.24
B114-BR-NPT	1 1/4	£24.09
B112-BR-NPT	1 1/2	£26.21
B2-BR-NPT	2	£31.91
B212-BR-NPT	2 1/2	£40.55
B3-BR-NPT	3	£54.71
B4-BR-NPT	4	£76.48
B6-BR-NPT	6	£209.20



1/2" sizes of Lever Couplings are only supplied with one locking arm.

Female Thread NPT

PGC: 472	NPT	Price
D12-BR-NPT	1/2	£19.14
D34-BR-NPT	3/4	£19.14
D1-BR-NPT	1	£20.84
D114-BR-NPT	1 1/4	£24.09
D112-BR-NPT	1 1/2	£26.41
D2-BR-NPT	2	£31.91
D212-BR-NPT	2 1/2	£43.84
D3-BR-NPT	3	£59.76
D4-BR-NPT	4	£86.22
D5-BR-NPT	5	£219.96
D6-BR-NPT	6	£236.50

Type E Hose Tail



PGC: 472	Size (")	Price
E12-BR	1/2	£9.59
E34-BR	3/4	£9.59
E1-BR	1	£11.55
E114-BR	1 1/4	£13.72
E112-BR	1 1/2	£15.12
E2-BR	2	£24.94
E212-BR	2 1/2	£30.01
E3-BR	3	£49.40
E4-BR	4	£70.84

Type F Plug

Male Thread BSPT



PGC: 472	BSPT	Price
F12-BR	1/2	£9.96
F34-BR	3/4	£9.96
F1-BR	1	£12.48
F114-BR	1 1/4	£15.48
F112-BR	1 1/2	£15.51
F2-BR	2	£24.42
F212-BR	2 1/2	£37.63
F3-BR	3	£44.45
F4-BR	4	£70.82
F6-BR	6	£178.26

Dust Plug



PGC: 472	Size (")	Price
DP12-BR	1/2	£8.32
DP34-BR	3/4	£8.32
DP1-BR	1	£10.57
DP114-BR	1 1/4	£10.82
DP112-BR	1 1/2	£11.33
DP2-BR	2	£14.54
DP212-BR	2 1/2	£20.58
DP3-BR	3	£23.48
DP4-BR	4	£36.29
DP6-BR	6	£119.92

Lever Stop



PGC: 472	Size (")	Price
DC12-BR	1/2	£15.46
DC34-BR	3/4	£16.75
DC1-BR	1	£18.72
DC114-BR	1 1/4	£21.30
DC112-BR	1 1/2	£22.34
DC2-BR	2	£24.42
DC212-BR	2 1/2	£32.76
DC3-BR	3	£44.72
DC4-BR	4	£145.60
DC6-BR	6	£159.96

Male Thread NPT

PGC: 472	NPT	Price
F12-BR-NPT	1/2	£10.40
F34-BR-NPT	3/4	£10.40
F1-BR-NPT	1	£15.95
F114-BR-NPT	1 1/4	£16.31
F112-BR-NPT	1 1/2	£16.48
F2-BR-NPT	2	£25.86
F212-BR-NPT	2 1/2	£39.83
F3-BR-NPT	3	£46.87
F4-BR-NPT	4	£75.09
F6-BR-NPT	6	£199.58

08


uPVC and ABS pipe systems for use in pipework installations in food and beverage production.

uPVC Pipe Systems:

- Lightweight with excellent resistance to chemicals and abrasions
- Ideal for use with potable water systems and most food products
- Resistant to most solutions of acids, alkalis, salts and solvents and can be mixed with water
- Identified by their dark grey colour



Temperature Range:
0°C to +60°C



Maximum Pressure:
9 bar to 15 bar;
(130 psi to 120 psi)



ABS Pipe Systems

- Robust and resistant to impact and chemicals, non-toxic in accordance to the requirements of the British Plastic federation
- Ideal for use in food and beverage production, sewerage and water treatment
- Identified by their light grey colour

ABS Pipe Systems

uPVC Pipe Systems

Imperial Plain Fittings

Imperial Plain Fittings

Bends

Bends

ABS 90° S/R Bend



PGC: 471	ID (")	Price
ABS-BE33-1/2	1/2	£7.76
ABS-BE33-3/4	3/4	£8.20
ABS-BE33-1	1	£10.83
ABS-BE33-11/4	1 1/4	£15.53
ABS-BE33-11/2	1 1/2	£19.95
ABS-BE33-2	2	£26.22
ABS-BE33-21/2	2 1/2	£55.85
ABS-BE33-3	3	£71.60
ABS-BE33-4	4	£112.41

uPVC 90° S/R Bend



PGC: 470	ID (")	Price
PVC-BE33-1/2	1/2	£7.05
PVC-BE33-3/4	3/4	£7.56
PVC-BE33-1	1	£10.55
PVC-BE33-11/4	1 1/4	£14.96
PVC-BE33-11/2	1 1/2	£18.52
PVC-BE33-2	2	£24.36
PVC-BE33-21/2	2 1/2	£52.01
PVC-BE33-3	3	£65.40
PVC-BE33-4	4	£106.58

08

Elbows

Elbows

ABS 90° Elbow



PGC: 471	ID (")	Price
ABS-EL53-1/2	1/2	£1.79
ABS-EL53-3/4	3/4	£2.15
ABS-EL53-1	1	£2.99
ABS-EL53-11/4	1 1/4	£4.99
ABS-EL53-11/2	1 1/2	£6.56
ABS-EL53-2	2	£9.91
ABS-EL53-21/2	2 1/2	£19.02
ABS-EL53-3	3	£28.64
ABS-EL53-4	4	£42.61
ABS-EL53-5	5	£98.22
ABS-EL53-6	6	£171.24
ABS-EL53-8	8	£273.81

uPVC 90° Elbow



PGC: 470	ID (")	Price
PVC-EL53-1/2	1/2	£1.71
PVC-EL53-3/4	3/4	£2.06
PVC-EL53-1	1	£2.86
PVC-EL53-11/4	1 1/4	£4.91
PVC-EL53-11/2	1 1/2	£6.34
PVC-EL53-2	2	£9.48
PVC-EL53-21/2	2 1/2	£17.81
PVC-EL53-3	3	£27.22
PVC-EL53-4	4	£40.89
PVC-EL53-5	5	£93.32
PVC-EL53-6	6	£161.70
PVC-EL53-8	8	£266.13

ABS Pipe Systems

uPVC Pipe Systems

ABS 45° Elbow



PGC: 471	ID (")	Price
ABS-EY53-1/2	1/2	£3.43
ABS-EY53-3/4	3/4	£3.49
ABS-EY53-1	1	£4.35
ABS-EY53-1 1/4	1 1/4	£6.34
ABS-EY53-1 1/2	1 1/2	£7.91
ABS-EY53-2	2	£10.97
ABS-EY53-2 1/2	2 1/2	£17.24
ABS-EY53-3	3	£25.77
ABS-EY53-4	4	£53.43
ABS-EY53-5	5	£90.75
ABS-EY53-6	6	£110.85
ABS-EY53-8	8	£249.75

uPVC 45° Elbow



PGC: 470	ID (")	Price
PVC-EY53-1/2	1/2	£3.21
PVC-EY53-3/4	3/4	£3.43
PVC-EY53-1	1	£4.14
PVC-EY53-1 1/4	1 1/4	£5.98
PVC-EY53-1 1/2	1 1/2	£7.49
PVC-EY53-2	2	£10.55
PVC-EY53-2 1/2	2 1/2	£16.53
PVC-EY53-3	3	£24.80
PVC-EY53-4	4	£50.86
PVC-EY53-5	5	£86.06
PVC-EY53-6	6	£105.00
PVC-EY53-8	8	£240.20

Tees & Crosses

Tees & Crosses

08

ABS Equal Tee



PGC: 471	ID (")	Price
ABS-TE43-1/2	1/2	£2.06
ABS-TE43-3/4	3/4	£2.86
ABS-TE43-1	1	£3.93
ABS-TE43-1 1/4	1 1/4	£5.62
ABS-TE43-1 1/4	1 1/2	£8.27
ABS-TE43-2	2	£12.54
ABS-TE43-2 1/2	2 1/2	£21.73
ABS-TE43-3	3	£36.62
ABS-TE43-4	4	£53.86
ABS-TE43-5	5	£142.83
ABS-TE43-6	6	£187.77
ABS-TE43-8	8	£306.87

uPVC Equal Tee



PGC: 470	ID (")	Price
PVC-TE43-1/2	1/2	£2.00
PVC-TE43-3/4	3/4	£2.50
PVC-TE43-1	1	£3.70
PVC-TE43-1 1/4	1 1/4	£5.27
PVC-TE43-1 1/4	1 1/2	£7.63
PVC-TE43-2	2	£12.11
PVC-TE43-2 1/2	2 1/2	£20.66
PVC-TE43-3	3	£34.98
PVC-TE43-4	4	£51.29
PVC-TE43-5	5	£135.62
PVC-TE43-6	6	£178.36
PVC-TE43-8	8	£292.06

ABS 45° Tee



PGC: 471	ID (")	Price
ABS-TY43-1/2	1/2	£9.12
ABS-TY43-3/4	3/4	£9.54
ABS-TY43-1	1	£10.97
ABS-TY43-1 1/4	1 1/4	£13.25
ABS-TY43-1 1/2	1 1/2	£16.53
ABS-TY43-2	2	£25.51

uPVC 45° Tee



PGC: 470	ID (")	Price
PVC-TY43-1/2	1/2	£8.55
PVC-TY43-3/4	3/4	£9.12
PVC-TY43-1	1	£10.26
PVC-TY43-1 1/4	1 1/4	£12.54
PVC-TY43-1 1/2	1 1/2	£15.82
PVC-TY43-2	2	£24.50

ABS Pipe Systems

uPVC Pipe Systems

ABS Reducing Tee



PGC: 471	ID 1 (")	ID 2 (")	Price
ABS-TR43-3/4-1/2	3/4	1/2	£2.93
ABS-TR43-1-3/4	1	3/4	£4.14
ABS-TR43-1-1/2	1	1 1/2	£4.14
ABS-TR43-1 1/4-1/2	1 1/4	1/2	£5.62
ABS-TR43-1 1/4-1	1 1/4	1	£5.62
ABS-TR43-1 1/2-1/2	1 1/2	1/2	£8.41
ABS-TR43-1 1/2-3/4	1 1/2	3/4	£8.41
ABS-TR43-1 1/2-1	1 1/2	1	£8.41
ABS-TR43-1 1/2-1 1/4	1 1/2	1 1/4	£8.41
ABS-TR43-2-3/4	2	3/4	£12.68
ABS-TR43-2-1	2	1	£12.68
ABS-TR43-2-1 1/4	2	1 1/4	£22.08
ABS-TR43-2-1 1/2	2	1 1/2	£12.68
ABS-TR43-2 1/2-1	2 1/2	1	£22.08
ABS-TR43-2 1/2-1 1/4	2 1/2	1 1/4	£22.08
ABS-TR43-2 1/2-1 1/2	2 1/2	1 1/2	£38.91
ABS-TR43-2 1/2-2	2 1/2	2	£22.08
ABS-TR43-3-1 1/4	3	1 1/4	£38.91
ABS-TR43-3-1 1/2	3	1 1/2	£38.91
ABS-TR43-3-2	3	2	£38.91
ABS-TR43-3-2 1/2	3	2 1/2	£55.64
ABS-TR43-4-1 1/2	4	1 1/2	£55.64
ABS-TR43-4-2	4	2	£55.64
ABS-TR43-4-2 1/2	4	2 1/2	£55.64
ABS-TR43-4-3	4	3	£55.64

uPVC Reducing Tee



PGC: 470	ID 1 (")	ID 2 (")	Price
PVC-TR43-3/4-1/2	3/4	1/2	£2.72
PVC-TR43-1-1/2	1	1/2	£3.84
PVC-TR43-1-3/4	1	3/4	£3.84
PVC-TR43-1 1/4-1/2	1 1/4	1/2	£5.35
PVC-TR43-1 1/4-3/4	1 1/4	3/4	£5.35
PVC-TR43-1 1/4-1	1 1/4	1	£5.35
PVC-TR43-1 1/2-1/2	1 1/2	1/2	£7.76
PVC-TR43-1 1/2-3/4	1 1/2	3/4	£7.76
PVC-TR43-1 1/2-1	1 1/2	1	£7.76
PVC-TR43-1 1/2-1 1/4	1 1/2	1 1/4	£7.76
PVC-TR43-2-3/4	2	3/4	£12.26
PVC-TR43-2-1	2	1	£12.26
PVC-TR43-2-1 1/4	2	1 1/4	£12.26
PVC-TR43-2-1 1/2	2	1 1/2	£12.26
PVC-TR43-2 1/2-1	2 1/2	1	£21.10
PVC-TR43-2 1/2-1 1/4	2 1/2	1 1/4	£21.10
PVC-TR43-2 1/2-2 1/2	2 1/2	1 1/2	£21.10
PVC-TR43-2 1/2-2	2 1/2	2	£21.10
PVC-TR43-3-1 1/4	3	1 1/4	£35.70
PVC-TR43-3-1 1/2	3	1 1/2	£35.70
PVC-TR43-3-2	3	2	£35.70
PVC-TR43-3-2 1/2	3	2 1/2	£35.70
PVC-TR43-4-1 1/2	4	1 1/2	£53.22
PVC-TR43-4-2	4	2	£53.22
PVC-TR43-4-2 1/2	4	2 1/2	£53.22
PVC-TR43-4-3	4	3	£53.22

08

ABS Cross



PGC: 471	ID (")	Price
ABS-CR33-1/2	1/2	£7.70
ABS-CR33-3/4	3/4	£8.20
ABS-CR33-1	1	£9.91
ABS-CR33-1 1/4	1 1/4	£13.98
ABS-CR33-1 1/2	1 1/2	£17.38
ABS-CR33-2	2	£23.79

uPVC Cross



PGC: 470	ID (")	Price
PVC-CR33-1/2	1/2	£6.92
PVC-CR33-3/4	3/4	£7.49
PVC-CR33-1	1	£8.98
PVC-CR33-1 1/4	1 1/4	£12.68
PVC-CR33-1 1/2	1 1/2	£15.82
PVC-CR33-2	2	£21.65
PVC-CR33-2 1/2	2 1/2	£103.43

ABS Pipe Systems

Sockets

ABS Equal Socket



PGC: 471	ID (")	Price
ABS-SO13-1/2	1/2	£1.35
ABS-SO13-3/4	3/4	£1.51
ABS-SO13-1	1	£1.71
ABS-SO13-11/4	1 1/4	£2.99
ABS-SO13-11/2	1 1/2	£3.57
ABS-SO13-2	2	£5.14
ABS-SO13-21/2	2 1/2	£10.97
ABS-SO13-3	3	£20.17
ABS-SO13-4	4	£28.71
ABS-SO13-5	5	£55.99
ABS-SO13-6	6	£71.60
ABS-SO13-8	8	£149.59

uPVC Pipe Systems

Sockets

uPVC Equal Socket



PGC: 470	ID (")	Price
PVC-SO13-1/2	1/2	£1.70
PVC-SO13-3/4	3/4	£1.43
PVC-SO13-1	1	£1.65
PVC-SO13-11/4	1 1/4	£2.93
PVC-SO13-11/2	1 1/2	£3.49
PVC-SO13-2	2	£4.99
PVC-SO13-21/2	2 1/2	£10.41
PVC-SO13-3	3	£18.81
PVC-SO13-4	4	£27.35
PVC-SO13-5	5	£53.79
PVC-SO13-6	6	£88.52
PVC-SO13-8	8	£142.74

08

ABS Reducing Socket



PGC: 471	ID 1 (")	ID 2 (")	Price
ABS-RS13-3/4-1/2	3/4	1/2	£2.06
ABS-RS13-1-3/4	1	3/4	£2.72
ABS-RS13-11/4-1	1 1/4	1	£3.84
ABS-RS13-11/2-11/4	1 1/2	1 1/4	£4.20
ABS-RS13-2-11/2	2	1 1/2	£6.56
ABS-RS13-21/2-2	2 1/2	2	£18.31
ABS-RS13-3-21/2	3	2 1/2	£20.53
ABS-RS13-4-3	4	3	£30.20

uPVC Reducing Socket



PGC: 470	ID 1 (")	ID 2 (")	Price
PVC-RS13-3/4-1/2	3/4	1/2	£1.92
PVC-RS13-1-3/4	1	3/4	£2.57
PVC-RS13-11/4-1	1 1/4	1	£3.64
PVC-RS13-11/2-11/4	1 1/2	1 1/4	£4.06
PVC-RS13-2-11/2	2	1 1/2	£6.13
PVC-RS13-21/2-2	2 1/2	2	£16.67
PVC-RS13-3-21/2	3	2 1/2	£18.81
PVC-RS13-4-3	4	3	£27.43

ABS Pipe Systems

Reducing Bushes

ABS Reducing Bush



PGC: 471	ID 1 (")	ID 2 (")	Price
ABS-RB93-3/4-1/2	3/4	1/2	£1.35
ABS-RB93-1-1/2	1	1/2	£1.71
ABS-RB93-1-3/4	1	3/4	£1.71
ABS-RB93-11/4-1/2	1 1/4	1/2	£2.28
ABS-RB93-11/4-3/4	1 1/4	3/4	£2.28
ABS-RB93-11/4-1	1 1/4	1	£2.28
ABS-RB93-11/2-3/4	1 1/2	3/4	£2.99
ABS-RB93-11/2-1	1 1/2	1	£2.99
ABS-RB93-11/2-11/4	1 1/2	1 1/4	£2.99
ABS-RB93-2-1	2	1	£3.93
ABS-RB93-2-11/4	2	1 1/4	£3.93
ABS-RB93-2-11/2	2	1 1/2	£3.93
ABS-RB93-21/2-11/2	2 1/2	1 1/2	£6.99
ABS-RB93-21/2-2	2 1/2	2	£6.99
ABS-RB93-3-11/2	3	1 1/2	£10.97
ABS-RB93-3-2	3	2	£10.97
ABS-RB93-3-21/2	3	2 1/2	£11.97
ABS-RB93-4-2	4	2	£15.10
ABS-RB93-4-21/2	4	2 1/2	£15.10
ABS-RB93-4-3	4	3	£15.10
ABS-RB93-5-3	5	3	£43.59
ABS-RB93-5-4	5	4	£43.59
ABS-RB93-6-4	6	4	£46.59
ABS-RB93-8-6	8	6	£100.44

uPVC Pipe Systems

Reducing Bushes

uPVC Reducing Bush



PGC: 470	ID 1 (")	ID 2 (")	Price
PVC-RB93-3/4-1/2	3/4	1/2	£1.29
PVC-RB93-1-1/2	1	1/2	£1.65
PVC-RB93-1-3/4	1	3/4	£1.65
PVC-RB93-11/4-1/2	1 1/4	1/2	£2.22
PVC-RB93-11/4-3/4	1 1/4	3/4	£2.22
PVC-RB93-11/4-1	1 1/4	1	£2.22
PVC-RB93-11/2-3/4	1 1/2	3/4	£2.63
PVC-RB93-11/2-1	1 1/2	1	£2.63
PVC-RB93-11/2-11/4	1 1/2	1 1/4	£2.63
PVC-RB93-2-1	2	1	£3.78
PVC-RB93-2-11/4	2	1 1/4	£3.78
PVC-RB93-2-11/2	2	1 1/2	£3.78
PVC-RB93-21/2-11/2	2 1/2	1 1/2	£6.56
PVC-RB93-21/2-2	2 1/2	2	£6.56
PVC-RB93-3-11/2	3	1 1/2	£10.55
PVC-RB93-3-2	3	2	£10.55
PVC-RB93-3-21/2	3	2 1/2	£11.40
PVC-RB93-4-2	4	2	£14.39
PVC-RB93-4-21/2	4	2 1/2	£14.39
PVC-RB93-4-3	4	3	£14.39
PVC-RB93-5-3	5	3	£41.60
PVC-RB93-5-4	5	4	£41.60
PVC-RB93-6-4	6	4	£44.80
PVC-RB93-8-6	8	6	£95.89

08

Caps

ABS Cap



PGC: 471	ID (")	Price
ABS-CA73-1/2	1/2	£1.43
ABS-CA73-3/4	3/4	£1.57
ABS-CA73-1	1	£1.86
ABS-CA73-11/4	1 1/4	£2.86
ABS-CA73-11/2	1 1/2	£4.41
ABS-CA73-2	2	£5.56
ABS-CA73-21/2	2 1/2	£14.11
ABS-CA73-3	3	£16.80
ABS-CA73-4	4	£25.37
ABS-CA73-5	5	£46.88
ABS-CA73-6	6	£67.68
ABS-CA73-8	8	£138.77

Caps

uPVC Cap



PGC: 470	ID (")	Price
PVC-CA73-1/2	1/2	£1.29
PVC-CA73-3/4	3/4	£1.43
PVC-CA73-1	1	£1.71
PVC-CA73-11/4	1 1/4	£2.50
PVC-CA73-11/2	1 1/2	£4.20
PVC-CA73-2	2	£5.21
PVC-CA73-21/2	2 1/2	£12.40
PVC-CA73-3	3	£15.82
PVC-CA73-4	4	£24.23
PVC-CA73-5	5	£42.31
PVC-CA73-6	6	£58.77
PVC-CA73-8	8	£120.39

ABS Pipe Systems

Socket Unions

ABS Socket Union



PGC: 471	ID (")	Price
ABS-UN83-1/2	1/2	£7.13
ABS-UN83-3/4	3/4	£7.70
ABS-UN83-1	1	£10.33
ABS-UN83-11/4	1 1/4	£12.54
ABS-UN83-11/2	1 1/2	£17.38
ABS-UN83-2	2	£22.58
ABS-UN83-21/2	2 1/2	£56.28
ABS-UN83-3	3	£83.78
ABS-UN83-4	4	£112.69

uPVC Pipe Systems

Socket Unions

uPVC Socket Union



PGC: 470	ID (")	Price
PVC-UN83-1/2	1/2	£6.56
PVC-UN83-3/4	3/4	£7.49
PVC-UN83-1	1	£9.69
PVC-UN83-11/4	1 1/4	£12.04
PVC-UN83-11/2	1 1/2	£16.53
PVC-UN83-2	2	£21.37
PVC-UN83-21/2	2 1/2	£54.85
PVC-UN83-3	3	£79.64
PVC-UN83-4	4	£107.70

Flanges

ABS Stub Flange



PGC: 471	ID (")	Price
ABS-ST23-1/2	1/2	£1.86
ABS-ST23-3/4	3/4	£1.92
ABS-ST23-1	1	£2.06
ABS-ST23-11/4	1 1/4	£3.29
ABS-ST23-11/2	1 1/2	£5.42
ABS-ST23-2	2	£8.34
ABS-ST23-21/2	2 1/2	£13.11
ABS-ST23-3	3	£16.11
ABS-ST23-4	4	£20.94
ABS-ST23-5	5	£47.87
ABS-ST23-6	6	£54.14
ABS-ST23-8	8	£113.34

Flanges

uPVC Stub Flange



PGC: 470	ID (")	Price
PVC-ST23-1/2	1/2	£1.65
PVC-ST23-3/4	3/4	£1.86
PVC-ST23-1	1	£2.00
PVC-ST23-11/4	1 1/4	£3.13
PVC-ST23-11/2	1 1/2	£5.14
PVC-ST23-2	2	£7.70
PVC-ST23-21/2	2 1/2	£12.47
PVC-ST23-3	3	£15.40
PVC-ST23-4	4	£20.09
PVC-ST23-5	5	£45.60
PVC-ST23-6	6	£51.92
PVC-ST23-8	8	£107.85

ABS Full Faced Flange



PGC: 471	ID (")	Price
ABS-FF33-1/2	1/2	£7.84
ABS-FF33-3/4	3/4	£8.27
ABS-FF33-1	1	£10.83
ABS-FF33-11/4	1 1/4	£14.18
ABS-FF33-11/2	1 1/2	£16.53
ABS-FF33-2	2	£21.45
ABS-FF33-21/2	2 1/2	£27.08
ABS-FF33-3	3	£31.35
ABS-FF33-4	4	£40.69

uPVC Full Faced Flange



PGC: 470	ID (")	Price
PVC-FF33-1/2	1/2	£7.40
PVC-FF33-3/4	3/4	£7.56
PVC-FF33-1	1	£9.76
PVC-FF33-11/4	1 1/4	£12.83
PVC-FF33-11/2	1 1/2	£15.10
PVC-FF33-2	2	£19.46
PVC-FF33-21/2	2 1/2	£25.51
PVC-FF33-3	3	£28.50
PVC-FF33-4	4	£38.25

ABS Pipe Systems

uPVC Pipe Systems

ABS Full Faced Flange

Table E



PGC: 471	ID (")	Price
ABS-FF30-1/2	1/2	£7.84
ABS-FF30-3/4	3/4	£8.27
ABS-FF30-1	1	£10.83
ABS-FF30-11/4	1 1/4	£14.18
ABS-FF30-11/2	1 1/2	£16.53
ABS-FF30-2	2	£21.45
ABS-FF30-21/2	2 1/2	£27.08
ABS-FF30-3	3	£31.35
ABS-FF30-4	4	£40.69

uPVC Full Faced Flange

Table E



PGC: 470	ID (")	Price
PVC-FF30-1/2	1/2	£7.40
PVC-FF30-3/4	3/4	£7.56
PVC-FF30-1	1	£9.76
PVC-FF30-11/4	1 1/4	£12.83
PVC-FF30-11/2	1 1/2	£15.10
PVC-FF30-2	2	£19.46
PVC-FF30-21/2	2 1/2	£25.51
PVC-FF30-3	3	£28.50
PVC-FF30-4	4	£38.25

uPVC Blank Flange



PGC: 470	ID (")	Price
PVC-BF00-1/2	1/2	£15.45
PVC-BF00-3/4	3/4	£17.56
PVC-BF00-1	1	£18.12
PVC-BF00-11/4	1 1/4	£19.38
PVC-BF00-11/2	1 1/2	£21.07
PVC-BF00-2	2	£23.59
PVC-BF00-21/2	2 1/2	£31.04
PVC-BF00-3	3	£40.32
PVC-BF00-4	4	£53.86
PVC-BF00-6	6	£95.34

08

Hose Adaptors

Hose Adaptors

ABS Hose Adaptor



PGC: 471	ID (")	Price
ABS-HN63-1/2	1/2	£3.29
ABS-HN63-3/4	3/4	£3.84
ABS-HN63-1	1	£4.14
ABS-HN63-11/4	1 1/4	£5.14
ABS-HN63-11/2	1 1/2	£7.56
ABS-HN63-2	2	£12.26

uPVC Hose Adaptor



PGC: 470	ID (")	Price
PVC-HN63-1/2	1/2	£3.29
PVC-HN63-3/4	3/4	£4.35
PVC-HN63-1	1	£4.99
PVC-HN63-11/4	1 1/4	£7.40
PVC-HN63-11/2	1 1/2	£8.83
PVC-HN63-2	2	£13.40

ABS Pipe Systems

Sockets

ABS Metric/ Imperial Socket



PGC: 471	ID 1 (")	ID 2 (")	Price
ABS-SO14-20-1/2	20	1/2	£1.79
ABS-SO14-25-3/4	25	3/4	£1.86
ABS-SO14-32-1	32	1	£2.22
ABS-SO14-40-1 1/4	40	1 1/4	£3.29
ABS-SO14-50-1 1/2	50	1 1/2	£4.85
ABS-SO14-63-2	63	2	£10.97
ABS-SO14-90-3	90	3	£20.03
ABS-SO14-110-4	110	4	£37.04

uPVC Pipe Systems

Sockets

uPVC Metric/ Imperial Socket



PGC: 470	ID 1 (")	ID 2 (")	Price
PVC-SO14-20mm-1/2	20	1/2	£1.71
PVC-SO14-25mm-3/4	25	3/4	£1.79
PVC-SO14-32mm-1	32	1	£2.15
PVC-SO14-40mm-1 1/4	40	1 1/4	£3.21
PVC-SO14-50mm-1 1/2	50	1 1/2	£4.71
PVC-SO14-63mm-2	63	2	£10.69
PVC-SO14-90mm-3	90	3	£19.23
PVC-SO14-110mm-4	110	4	£35.05

08

Plain/BSP Threaded Fittings

Plain/BSP Threaded Fittings

Elbows, Tees and Sockets

Elbows, Tees and Sockets

ABS 90° Elbow



PGC: 471	ID (")	BSP	Price
ABS-EL32-1/2	1/2	1/2	£4.56
ABS-EL32-3/4	3/4	3/4	£4.85
ABS-EL32-1	1	1	£6.28
ABS-EL32-1 1/4	1 1/4	1 1/4	£12.91
ABS-EL32-1 1/2	1 1/2	1 1/2	£14.39
ABS-EL32-2	2	2	£20.38
ABS-EL32-2 1/2	2 1/2	2 1/2	£34.05
ABS-EL32-3	3	3	£50.44
ABS-EL32-4	4	4	£76.30

uPVC 90° Elbow



PGC: 470	ID (")	BSP	Price
PVC-EL32-1/2-1/2	1/2	1/2	£4.14
PVC-EL32-3/4-3/4	3/4	3/4	£4.77
PVC-EL32-1-1	1	1	£5.92
PVC-EL32-1 1/4-1 1/4	1 1/4	1 1/4	£12.26
PVC-EL32-1 1/2-1 1/2	1 1/2	1 1/2	£13.54
PVC-EL32-2-2	2	2	£19.16
PVC-EL32-2 1/2-2 1/2	2 1/2	2 1/2	£31.92
PVC-EL32-3-3	3	3	£47.87
PVC-EL32-4-4	4	4	£63.90

ABS Pipe Systems

uPVC Pipe Systems

ABS 90° Tee


PGC: 471	ID (")	BSP	Price
ABS-TE32-1/2-1/2	1/2	1/2	£4.71
ABS-TE32-3/4-3/4	3/4	3/4	£5.35
ABS-TE32-1-1	1	1	£6.56
ABS-TE32-11/4-11/4	1 1/4	1 1/4	£13.54
ABS-TE32-11/2-11/2	1 1/2	1 1/2	£14.96
ABS-TE32-2-2	2	2	£21.16
ABS-TE32-21/2-21/2	2 1/2	2 1/2	£35.83
ABS-TE32-3-3	3	3	£53.64
ABS-TE32-4-4	4	4	£88.47

uPVC 90° Tee


PGC: 470	ID (")	BSP	Price
PVC-TE32-1/2-1/2	1/2	1/2	£4.35
PVC-TE32-3/4-3/4	3/4	3/4	£4.99
PVC-TE32-1-1	1	1	£6.13
PVC-TE32-11/4-11/4	1 1/4	1 1/4	£12.97
PVC-TE32-11/2-11/2	1 1/2	1 1/2	£14.25
PVC-TE32-2-2	2	2	£20.09
PVC-TE32-21/2-21/2	2 1/2	2 1/2	£32.33
PVC-TE32-3-3	3	3	£48.72
PVC-TE32-4-4	4	4	£79.93

ABS Socket


PGC: 471	ID (")	BSP	Price
ABS-SO32-1/2-1/2	1/2	1/2	£3.70
ABS-SO32-3/4-3/4	3/4	3/4	£4.14
ABS-SO32-1-1	1	1	£4.99
ABS-SO32-11/4-11/4	1 1/4	1 1/4	£7.91
ABS-SO32-11/2-11/2	1 1/2	1 1/2	£9.27
ABS-SO32-2-2	2	2	£12.26
ABS-SO32-21/2-21/2	2 1/2	2 1/2	£32.06
ABS-SO32-3-3	3	3	£33.34
ABS-SO32-4-4	4	4	£49.73

uPVC Socket


PGC: 470	ID (")	BSP	Price
PVC-SO32-1/2-1/2	1/2	1/2	£3.57
PVC-SO32-3/4-3/4	3/4	3/4	£3.93
PVC-SO32-1-1	1	1	£4.91
PVC-SO32-11/4-11/4	1 1/4	1 1/4	£7.63
PVC-SO32-11/2-11/2	1 1/2	1 1/2	£8.83
PVC-SO32-2-2	2	2	£11.47
PVC-SO32-21/2-21/2	2 1/2	2 1/2	£28.50
PVC-SO32-3-3	3	3	£32.42
PVC-SO32-4-4	4	4	£44.52

ABS Pipe Systems

uPVC Pipe Systems

Adaptors

ABS Female Threaded Adaptor



PGC: 471	ID (")	BSP	Price
ABS-AD42-1/2-1/2	1/2	1/2	£4.06
ABS-AD42-3/4-3/4	3/4	3/4	£4.56
ABS-AD42-1-1	1	1	£5.62
ABS-AD42-1 1/4-1 1/4	1 1/4	1 1/4	£6.77
ABS-AD42-1 1/2-1 1/2	1 1/2	1 1/2	£8.12
ABS-AD42-2-2	2	2	£14.18
ABS-AD42-2 1/2-2 1/2	2 1/2	2 1/2	£29.35
ABS-AD42-3-3	3	3	£36.62
ABS-AD42-4-4	4	4	£57.99

Adaptors

uPVC Female Threaded Adaptor



PGC: 470	ID (")	BSP	Price
PVC-AD42-1/2-1/2	1/2	1/2	£3.78
PVC-AD42-3/4-3/4	3/4	3/4	£4.20
PVC-AD42-1-1	1	1	£5.07
PVC-AD42-1 1/4-1 1/4	1 1/4	1 1/4	£5.49
PVC-AD42-1 1/2-1 1/2	1 1/2	1 1/2	£7.20
PVC-AD42-2-2	2	2	£12.54
PVC-AD42-2 1/2-2 1/2	2 1/2	2 1/2	£26.99
PVC-AD42-3-3	3	3	£33.41
PVC-AD42-4-4	4	4	£52.72

08

ABS Hose Adaptor



PGC: 471	ID (")	Price
ABS-HN64-3/4	3/4	£8.83
ABS-HN64-1	1	£9.62
ABS-HN64-1 1/4	1 1/4	£11.62
ABS-HN64-1 1/2	1 1/2	£16.11
ABS-HN64-2	2	£21.87
ABS-HN64-2 1/2	2 1/2	£29.49

uPVC Hose Adaptor



PGC: 470	ID (")	Price
PVC-HN64-3/4	3/4	£8.20
PVC-HN64-1	1	£8.27
PVC-HN64-1 1/4	1 1/4	£10.62
PVC-HN64-1 1/2	1 1/2	£14.33
PVC-HN64-2	2	£20.09
PVC-HN64-2 1/2	2 1/2	£27.35

Reducing Bushes

ABS Reducing Bush



PGC: 471	ID (")	BSP	Price
ABS-RB30-1/2-3/8	1/2	3/8	£2.63
ABS-RB30-3/4-1/2	3/4	1/2	£3.07
ABS-RB30-1-3/4	1	3/4	£4.14
ABS-RB30-1 1/4-1	1 1/4	1	£6.69
ABS-RB30-1 1/2-1 1/4	1 1/2	1 1/4	£6.92
ABS-RB30-2-1 1/2	2	1 1/2	£16.47
ABS-RB30-3-2 1/2	3	2 1/2	£26.64
ABS-RB30-4-3	4	3	£37.90

Reducing Bushes

uPVC Reducing Bush



PGC: 470	ID (")	BSP	Price
PVC-RB30-1/2-3/8	1/2	3/8	£2.42
PVC-RB30-3/4-1/2	3/4	1/2	£2.93
PVC-RB30-1-3/4	1	3/4	£3.93
PVC-RB30-1 1/4-1	1 1/4	1	£6.20
PVC-RB30-1 1/2-1 1/4	1 1/2	1 1/4	£6.69
PVC-RB30-2-1 1/2	2	1 1/2	£8.91
PVC-RB30-3-2 1/2	3	2 1/2	£24.44
PVC-RB30-4-3	4	3	£34.62

ABS Pipe Systems

uPVC Pipe Systems

Socket Unions

Socket Unions

ABS Socket Union



PGC: 471	ID (")	BSP	Price
ABS-UN72-1/2-1/2	1/2	1/2	£10.41
ABS-UN72-3/4-3/4	3/4	3/4	£11.40
ABS-UN72-1-1	1	1	£14.25
ABS-UN72-11/4-11/4	1 1/4	1 1/4	£17.31
ABS-UN72-11/2-11/2	1 1/2	1 1/2	£22.72
ABS-UN72-2-2	2	2	£32.20

uPVC Socket Union



PGC: 470	ID (")	BSP	Price
PVC-UN72-1/2-1/2	1/2	1/2	£9.48
PVC-UN72-3/4-3/4	3/4	3/4	£10.41
PVC-UN72-1-1	1	1	£13.04
PVC-UN72-11/4-11/4	1 1/4	1 1/4	£15.82
PVC-UN72-11/2-11/2	1 1/2	1 1/2	£20.80
PVC-UN72-2-2	2	2	£28.93

Tank Connectors

Tank Connectors

ABS Tank Connector



PGC: 471	ID (")	Price
ABS-TC93-1/2	1/2	£7.91
ABS-TC93-3/4	3/4	£9.18
ABS-TC93-1	1	£21.81
ABS-TC93-11/4	1 1/4	£42.47
ABS-TC93-11/2	1 1/2	£49.37
ABS-TC93-2	2	£55.35
ABS-TC93-21/2	2 1/2	£86.46
ABS-TC93-3	3	£93.60
ABS-TC93-4	4	£100.66

uPVC Tank Connector



PGC: 470	ID (")	Price
PVC-TC93-1/2	1/2	£7.91
PVC-TC93-3/4	3/4	£9.18
PVC-TC93-1	1	£21.81
PVC-TC93-11/4	1 1/4	£42.47
PVC-TC93-11/2	1 1/2	£49.37
PVC-TC93-2	2	£55.35
PVC-TC93-21/2	2 1/2	£86.46
PVC-TC93-3	3	£93.60
PVC-TC93-4	4	£100.66

Weld Nipples

Weld Nipples

ABS Weld Nipple



PGC: 471	ID (")	Price
ABS-BN12-3/8	3/8	£2.57
ABS-BN12-1/2	1/2	£2.72
ABS-BN12-3/4	3/4	£3.29
ABS-BN12-1	1	£4.41
ABS-BN12-11/4	1 1/4	£5.85
ABS-BN12-11/2	1 1/2	£6.28
ABS-BN12-2	2	£8.20
ABS-BN12-21/2	2 1/2	£19.23
ABS-BN12-3	3	£21.65
ABS-BN12-4	4	£41.75

uPVC Weld Nipple



PGC: 470	ID (")	Price
PVC-BN12-3/8	3/8	£2.36
PVC-BN12-1/2	1/2	£2.57
PVC-BN12-3/4	3/4	£3.13
PVC-BN12-1	1	£4.20
PVC-BN12-11/4	1 1/4	£5.56
PVC-BN12-11/2	1 1/2	£5.92
PVC-BN12-2	2	£7.91
PVC-BN12-21/2	2 1/2	£18.31
PVC-BN12-3	3	£20.44
PVC-BN12-4	4	£41.46

ABS Pipe Systems

BSP Threaded Fittings

Elbows

ABS 90° Elbow

Female Thread BSP



PGC: 471	BSP	Price
ABS-EL51-3/8	3/8	£4.64
ABS-EL51-1/2	1/2	£4.77
ABS-EL51-3/4	3/4	£4.85
ABS-EL51-1	1	£6.28
ABS-EL51-11/4	1 1/4	£11.26
ABS-EL51-11/2	1 1/2	£12.54
ABS-EL51-2	2	£19.02
ABS-EL51-21/2	2 1/2	£34.62
ABS-EL51-3	3	£52.15
ABS-EL51-4	4	£74.52

ABS 45° Elbow

Female Thread BSP



PGC: 471	BSP	Price
ABS-EY51-3/8	3/8	£5.71
ABS-EY51-1/2	1/2	£5.85
ABS-EY51-3/4	3/4	£6.49
ABS-EY51-1	1	£7.91
ABS-EY51-11/4	1 1/4	£10.90
ABS-EY51-11/2	1 1/2	£14.11
ABS-EY51-2	2	£20.30
ABS-EY51-21/2	2 1/2	£48.72
ABS-EY51-3	3	£61.76
ABS-EY51-4	4	£88.11

Barrel Nipples

ABS Barrel Nipple



PGC: 471	BSP	Price
ABS-BN11-3/8	3/8	£2.72
ABS-BN11-1/2	1/2	£2.78
ABS-BN11-3/4	3/4	£3.43
ABS-BN11-1	1	£4.56
ABS-BN11-11/4	1 1/4	£5.92
ABS-BN11-11/2	1 1/2	£6.85
ABS-BN11-2	2	£8.70
ABS-BN11-21/2	2 1/2	£18.52
ABS-BN11-3	3	£21.65
ABS-BN11-4	4	£43.24

uPVC Pipe Systems

BSP Threaded Fittings

Elbows

uPVC 90° Elbow

Female Thread BSP



PGC: 470	BSP	Price
PVC-EL51-3/8	3/8	£4.28
PVC-EL51-1/2	1/2	£4.50
PVC-EL51-3/4	3/4	£4.77
PVC-EL51-1	1	£5.92
PVC-EL51-11/4	1 1/4	£10.48
PVC-EL51-11/2	1 1/2	£12.26
PVC-EL51-2	2	£18.17
PVC-EL51-21/2	2 1/2	£31.27
PVC-EL51-3	3	£47.30
PVC-EL51-4	4	£67.68

uPVC 45° Elbow

Female Thread BSP



PGC: 470	BSP	Price
PVC-EY51-3/8	3/8	£5.42
PVC-EY51-1/2	1/2	£5.49
PVC-EY51-3/4	3/4	£5.92
PVC-EY51-1	1	£7.27
PVC-EY51-11/4	1 1/4	£9.98
PVC-EY51-11/2	1 1/2	£12.75
PVC-EY51-2	2	£18.45
PVC-EY51-21/2	2 1/2	£44.16
PVC-EY51-3	3	£56.14
PVC-EY51-4	4	£85.62

Barrel Nipples

uPVC Barrel Nipple



PGC: 470	BSP	Price
PVC-BN11-3/8	3/8	£2.50
PVC-BN11-1/2	1/2	£2.63
PVC-BN11-3/4	3/4	£3.13
PVC-BN11-1	1	£4.14
PVC-BN11-11/4	1 1/4	£5.56
PVC-BN11-11/2	1 1/2	£6.56
PVC-BN11-2	2	£8.41
PVC-BN11-21/2	2 1/2	£17.68
PVC-BN11-3	3	£20.23
PVC-BN11-4	4	£42.47

ABS Pipe Systems

uPVC Pipe Systems

Equal Tees

ABS Equal Tee



PGC: 471	BSP	Price
ABS-TE41-3/8	3/8	£4.64
ABS-TE41-1/2	1/2	£4.85
ABS-TE41-3/4	3/4	£5.27
ABS-TE41-1	1	£7.34
ABS-TE41-11/4	1 1/4	£12.33
ABS-TE41-11/2	1 1/2	£15.96
ABS-TE41-2	2	£27.46
ABS-TE41-21/2	2 1/2	£27.46
ABS-TE41-3	3	£70.53
ABS-TE41-4	4	£117.81

Equal Tees

uPVC Equal Tee



PGC: 470	BSP	Price
PVC-TE41-3/8	3/8	£3.29
PVC-TE41-1/2	1/2	£3.93
PVC-TE41-3/4	3/4	£4.99
PVC-TE41-1	1	£6.69
PVC-TE41-11/4	1 1/4	£11.97
PVC-TE41-11/2	1 1/2	£15.67
PVC-TE41-2	2	£26.44
PVC-TE41-21/2	2 1/2	£44.74
PVC-TE41-3	3	£64.11
PVC-TE41-4	4	£106.85

Sockets

ABS Socket



PGC: 471	BSP	Price
ABS-SO11-3/8	3/8	£4.64
ABS-SO11-1/2	1/2	£4.77
ABS-SO11-3/4	3/4	£5.49
ABS-SO11-1	1	£6.85
ABS-SO11-11/4	1 1/4	£9.34
ABS-SO11-11/2	1 1/2	£10.48
ABS-SO11-2	2	£13.11
ABS-SO11-21/2	2 1/2	£29.35
ABS-SO11-3	3	£36.26
ABS-SO11-4	4	£66.97

Sockets

uPVC Socket



PGC: 470	BSP	Price
PVC-SO11-3/8	3/8	£4.35
PVC-SO11-1/2	1/2	£4.41
PVC-SO11-3/4	3/4	£5.42
PVC-SO11-1	1	£6.34
PVC-SO11-11/4	1 1/4	£8.83
PVC-SO11-11/2	1 1/2	£10.12
PVC-SO11-2	2	£12.47
PVC-SO11-21/2	2 1/2	£26.85
PVC-SO11-3	3	£34.41
PVC-SO11-4	4	£60.83

Caps

ABS Caps



PGC: 471	BSP	Price
ABS-CA71-3/8	3/8	£3.70
ABS-CA71-1/2	1/2	£4.85
ABS-CA71-3/4	3/4	£5.56
ABS-CA71-1	1	£5.92
ABS-CA71-11/4	1 1/4	£6.34
ABS-CA71-11/2	1 1/2	£8.20
ABS-CA71-2	2	£10.41
ABS-CA71-21/2	2 1/2	£25.87
ABS-CA71-3	3	£35.98
ABS-CA71-4	4	£44.66

Caps

uPVC Caps



PGC: 470	BSP	Price
PVC-CA71-3/8	3/8	£3.64
PVC-CA71-1/2	1/2	£4.77
PVC-CA71-3/4	3/4	£5.49
PVC-CA71-1	1	£5.71
PVC-CA71-11/4	1 1/4	£5.92
PVC-CA71-11/2	1 1/2	£7.84
PVC-CA71-2	2	£9.91
PVC-CA71-21/2	2 1/2	£25.51
PVC-CA71-3	3	£33.98
PVC-CA71-4	4	£43.18

ABS Pipe Systems

uPVC Pipe Systems

Nipples

ABS Hexagon Nipple

Male Thread BSP



PGC: 471	BSP	Price
ABS-NI61-3/8	3/8	£2.22
ABS-NI61-1/2	1/2	£2.78
ABS-NI61-3/4	3/4	£3.43
ABS-NI61-1	1	£4.14
ABS-NI61-1 1/4	1 1/4	£5.92
ABS-NI61-1 1/2	1 1/2	£6.92
ABS-NI61-2	2	£7.70
ABS-NI61-2 1/2	2 1/2	£17.81
ABS-NI61-3	3	£25.21
ABS-NI61-4	4	£38.97

Nipples

uPVC Hexagon Nipple

Male Thread BSP



PGC: 470	BSP	Price
PVC-NI61-3/8	3/8	£2.15
PVC-NI61-1/2	1/2	£2.50
PVC-NI61-3/4	3/4	£2.93
PVC-NI61-1	1	£4.00
PVC-NI61-1 1/4	1 1/4	£5.42
PVC-NI61-1 1/2	1 1/2	£5.98
PVC-NI61-2	2	£7.49
PVC-NI61-2 1/2	2 1/2	£15.96
PVC-NI61-3	3	£22.94
PVC-NI61-4	4	£35.55

08

ABS Reducing Nipple

Male Thread BSP



PGC: 471	BSP 1	BSP 2	Price
ABS-NR61-1/2-3/8	1/2	3/8	£3.21
ABS-NR61-3/4-1/2	3/4	1/2	£3.70
ABS-NR61-1-3/4	1	3/4	£5.21
ABS-NR61-1 1/4-1	1 1/4	1	£5.85
ABS-NR61-1 1/2-1 1/4	1 1/2	1 1/4	£8.20
ABS-NR61-2-1 1/2	2	1 1/2	£11.26
ABS-NR61-2 1/2-2	2 1/2	2	£20.53
ABS-NR61-3-2 1/2	3	2 1/2	£25.21
ABS-NR61-4-3	4	3	£38.19

uPVC Reducing Nipple

Male Thread BSP



PGC: 470	BSP 1	BSP 2	Price
PVC-NR61-1/2-3/8	1/2	3/8	£2.93
PVC-NR61-3/4-1/2	3/4	1/2	£3.29
PVC-NR61-1-3/4	1	3/4	£4.64
PVC-NR61-1 1/4-1	1 1/4	1	£5.27
PVC-NR61-1 1/2-1 1/4	1 1/2	1 1/4	£7.49
PVC-NR61-2-1 1/2	2	1 1/2	£10.33
PVC-NR61-2 1/2-2	2 1/2	2	£18.60
PVC-NR61-3-2 1/2	3	2 1/2	£22.79
PVC-NR61-4-3	4	3	£36.77

Reducing Sockets

ABS Reducing Socket



PGC: 471	BSP 1	BSP 2	Price
ABS-RS11-1/2-3/8	1/2	3/8	£4.91
ABS-RS11-3/4-1/2	3/4	1/2	£4.91
ABS-RS11-1-3/4	1	3/4	£5.42
ABS-RS11-1 1/4-1	1 1/4	1	£6.56
ABS-RS11-2-1 1/2	2	1 1/2	£13.68
ABS-RS11-2 1/2-2	2 1/2	2	£29.21
ABS-RS11-3-2 1/2	3	2 1/2	£35.05

Reducing Sockets

uPVC Reducing Socket



PGC: 470	BSP 1	BSP 2	Price
PVC-RS11-1/2-3/8	1/2	3/8	£4.64
PVC-RS11-3/4-1/2	3/4	1/2	£4.64
PVC-RS11-1-3/4	1	3/4	£4.85
PVC-RS11-1 1/4-1	1 1/4	1	£5.98
PVC-RS11-2-1 1/2	2	1 1/2	£8.83
PVC-RS11-2 1/2-2	2 1/2	2	£12.26
PVC-RS11-3-2 1/2	3	2 1/2	£31.62

ABS Pipe Systems

uPVC Pipe Systems

Reducing Bushes

Reducing Bushes

ABS Reducing Bush Long Pattern



PGC: 471	BSP 1	BSP 2	Price
ABS-RE61-1/2-3/8	1/2	3/8	£2.86
ABS-RE61-3/4-3/8	3/4	3/8	£3.13
ABS-RE61-3/4-1/2	3/4	1/2	£3.13
ABS-RE61-1-3/8	1	3/8	£3.49
ABS-RE61-1-1/2	1	1/2	£3.49
ABS-RE61-1-3/4	1	3/4	£3.49
ABS-RE61-11/4-1/2	1 1/4	1/2	£5.56
ABS-RE61-11/4-3/4	1 1/4	3/4	£5.56
ABS-RE61-11/4-1	1 1/4	1	£5.56
ABS-RE61-11/2-3/4	1 1/2	3/4	£7.27
ABS-RE61-11/2-1	1 1/2	1	£7.27
ABS-RE61-11/2-11/4	1 1/2	1 1/4	£7.27
ABS-RE61-2-1	2	1	£11.40
ABS-RE61-2-11/4	2	1 1/4	£11.40
ABS-RE61-2-11/2	2	1 1/2	£11.40
ABS-RE61-21/2-11/4	2 1/2	1 1/4	£20.23
ABS-RE61-21/2-11/2	2 1/2	1 1/2	£20.23
ABS-RE61-21/2-2	2 1/2	2	£20.23
ABS-RE61-3-11/2	3	1 1/2	£25.07
ABS-RE61-3-2	3	2	£25.07
ABS-RE61-3-21/2	3	2 1/2	£25.07
ABS-RE61-4-2	4	2	£40.33
ABS-RE61-4-21/2	4	2 1/2	£40.33
ABS-RE61-4-3	4	3	£40.33

uPVC Reducing Bush Long Pattern



PGC: 470	BSP 1	BSP 2	Price
PVC-RE61-1/2-3/8	1/2	3/8	£2.22
PVC-RE61-3/4-3/8	3/4	3/8	£2.93
PVC-RE61-3/4-1/2	3/4	1/2	£2.93
PVC-RE61-1-3/8	1	3/8	£3.29
PVC-RE61-1-1/2	1	1/2	£3.29
PVC-RE61-1-3/4	1	3/4	£3.29
PVC-RE61-11/4-1/2	1 1/4	1/2	£5.35
PVC-RE61-11/4-3/4	1 1/4	3/4	£5.35
PVC-RE61-11/4-1	1 1/4	1	£5.35
PVC-RE61-11/2-3/4	1 1/2	3/4	£6.56
PVC-RE61-11/2-1	1 1/2	1	£6.56
PVC-RE61-11/2-11/4	1 1/2	1 1/4	£6.56
PVC-RE61-2-1	2	1	£10.33
PVC-RE61-2-11/4	2	1 1/4	£10.33
PVC-RE61-2-11/2	2	1 1/2	£10.33
PVC-RE61-21/2-11/4	2 1/2	1 1/4	£18.39
PVC-RE61-21/2-11/2	2 1/2	1 1/2	£18.39
PVC-RE61-21/2-2	2 1/2	2	£18.39
PVC-RE61-3-11/2	3	1 1/2	£22.66
PVC-RE61-3-2	3	2	£22.66
PVC-RE61-3-21/2	3	2 1/2	£22.66
PVC-RE61-4-2	4	2	£36.47
PVC-RE61-4-21/2	4	2 1/2	£36.47
PVC-RE61-4-3	4	3	£36.47

08

ABS Reducing Bush Short Pattern



PGC: 471	BSP1	BSP 2	Price
ABS-RB91-3/4-1/2	3/4	1/2	£3.21
ABS-RB91-1-3/4	1	3/4	£4.14
ABS-RB91-11/4-1	1 1/4	1	£9.18
ABS-RB91-11/2-11/4	1 1/2	1 1/4	£10.05
ABS-RB91-2-11/2	2	1 1/2	£10.05
ABS-RB91-21/2-2	2 1/2	2	£18.81
ABS-RB91-3-21/2	3	2 1/2	£26.01
ABS-RB91-4-3	4	3	£41.54

uPVC Reducing Bush Short Pattern



PGC: 470	BSP 1	BSP2	Price
PVC-RB91-3/4-1/2	3/4	1/2	£2.93
PVC-RB91-1-3/4	1	3/4	£4.00
PVC-RB91-11/4-1	1 1/4	1	£8.77
PVC-RB91-11/2-11/4	1 1/2	1 1/4	£9.54
PVC-RB91-2-11/2	2	1 1/2	£12.33
PVC-RB91-21/2-2	2 1/2	2	£17.24
PVC-RB91-3-21/2	3	2 1/2	£23.65
PVC-RB91-4-3	4	3	£37.61

ABS Pipe Systems

uPVC Pipe Systems

Reducing Pieces,

Imperial Pipes & Accessories

ABS Reducing Piece



PGC: 471	BSP1	BSP2	Price
ABS-RE21-3/8-1/2	3/8	1/2	£4.50
ABS-RE21-1/2-3/4	1/2	3/4	£4.71
ABS-RE21-3/4-1	3/4	1	£5.27
ABS-RE21-1-11/4	1	1 1/4	£7.27
ABS-RE21-11/4-11/2	1 1/4	1 1/2	£8.41
ABS-RE21-11/2-2	1 1/2	2	£10.41
ABS-RE21-2-21/2	2	2 1/2	£22.01
ABS-RE21-21/2-3	2 1/2	3	£28.57
ABS-RE21-3-4	3	4	£49.51

uPVC Reducing Piece



PGC: 470	ID 1 (")	ID 2 (")	Price
PVC-RE21-3/8-1/2	3/8	1/2	£3.93
PVC-RE21-1/2-3/4	1/2	3/4	£4.28
PVC-RE21-3/4-1	3/4	1	£5.14
PVC-RE21-1-11/4	1	1 1/4	£7.13
PVC-RE21-11/4-11/2	1 1/4	1 1/2	£8.27
PVC-RE21-11/2-2	1 1/2	2	£10.05
PVC-RE21-2-21/2	2	2 1/2	£21.51
PVC-RE21-21/2-3	2 1/2	3	£27.56
PVC-RE21-3-4	3	4	£48.58

08

ABS Plug



PGC: 471	BSP1	Price
ABS-PL71-3/8	3/8	£2.42
ABS-PL71-1/2	1/2	£2.86
ABS-PL71-3/4	3/4	£3.43
ABS-PL71-1	1	£4.14
ABS-PL71-11/4	1 1/4	£5.56
ABS-PL71-11/2	1 1/2	£6.92
ABS-PL71-2	2	£7.70
ABS-PL71-21/2	2 1/2	£21.01
ABS-PL71-3	3	£25.37
ABS-PL71-4	4	£47.02

uPVC Plug



PGC: 470	BSP2	Price
PVC-PL71-3/8	3/8	£2.28
PVC-PL71-1/2	1/2	£2.78
PVC-PL71-3/4	3/4	£3.13
PVC-PL71-1	1	£3.93
PVC-PL71-11/4	1 1/4	£5.42
PVC-PL71-11/2	1 1/2	£6.77
PVC-PL71-2	2	£7.20
PVC-PL71-21/2	2 1/2	£19.10
PVC-PL71-3	3	£23.08
PVC-PL71-4	4	£42.74

ABS Back Nut



PGC: 471	BSP 1	Price
ABS-NU91-1/2	1/2	£2.99
ABS-NU91-3/4	3/4	£3.49
ABS-NU91-1	1	£4.71
ABS-NU91-11/4	1 1/4	£8.06
ABS-NU91-11/2	1 1/2	£9.18
ABS-NU91-2	2	£11.40
ABS-NU91-21/2	2 1/2	£20.23
ABS-NU91-3	3	£28.06
ABS-NU91-4	4	£37.61

uPVC Back Nut



PGC: 470	BSP 2	Price
PVC-NU91-1/2	1/2	£2.63
PVC-NU91-3/4	3/4	£3.21
PVC-NU91-1	1	£4.35
PVC-NU91-11/4	1 1/4	£7.91
PVC-NU91-11/2	1 1/2	£8.47
PVC-NU91-2	2	£10.55
PVC-NU91-21/2	2 1/2	£18.45
PVC-NU91-3	3	£25.43
PVC-NU91-4	4	£34.12

ABS Pipe Systems

Imperial Pipes & Accessories

ABS Pressure Pipe (Class C)



PGC: 471	NB (")	Min. Wall (mm)	Price
ABS-PIPE-C-1	1	1.9	£5.59
ABS-PIPE-C-11/4	1 1/4	2.4	£9.42
ABS-PIPE-C-11/2	1 1/2	2.7	£11.97
ABS-PIPE-C-2	2	3.4	£16.09
ABS-PIPE-C-21/2	2 1/2	4.7	£27.86
ABS-PIPE-C-3	3	5.0	£33.28
ABS-PIPE-C-4	4	6.4	£54.72
ABS-PIPE-C-5	5	8.8	£106.58
ABS-PIPE-C-6	6	9.4	£108.24
ABS-PIPE-C-8	8	12.2	£194.66

ABS Pressure Pipe (Class E)



PGC: 471	NB (")	Min Wall (mm)	Price
ABS-PIPE-E-1/2	1/2	1.9	£4.28
ABS-PIPE-E-3/4	3/4	2.4	£6.60
ABS-PIPE-E-1	1	3.0	£8.67
ABS-PIPE-E-11/4	1 1/4	3.8	£12.96
ABS-PIPE-E-11/2	1 1/2	4.4	£17.07
ABS-PIPE-E-2	2	5.4	£21.42
ABS-PIPE-E-3	3	8.1	£42.96
ABS-PIPE-E-4	4	10.3	£69.18

ABS Solvent Cement



PGC: 471	Tin Size (ml)	Price
ABS-SOLVENT	500	£23.96

uPVC Pipe Systems

Imperial Pipes & Accessories

uPVC Pressure Pipe (Class C)



PGC: 470	ID 1 (")	ID 2 (")	Price
PVC-PIPE-C-2	2	2.5	£10.33
PVC-PIPE-C-3	3	3.5	£19.41
PVC-PIPE-C-4	4	4.5	£31.88
PVC-PIPE-C-5	5	5.5	£47.62
PVC-PIPE-C-6	6	6.6	£68.27
PVC-PIPE-C-8	8	7.8	£105.09

uPVC Pressure Pipe (Class E)



PGC: 470	ID 1 (")	ID 2 (")	Price
PVC-PIPE-E-1/2	1/2	1.7	£2.43
PVC-PIPE-E-3/4	3/4	1.9	£3.57
PVC-PIPE-E-1	1	2.2	£4.65
PVC-PIPE-E-11/4	1 1/4	2.7	£7.83
PVC-PIPE-E-11/2	1 1/2	3.1	£9.69
PVC-PIPE-E-2	2	3.9	£14.23
PVC-PIPE-E-3	3	5.7	£30.35
PVC-PIPE-E-4	4	7.3	£49.91
PVC-PIPE-E-6	6	10.8	£107.82

uPVC Solvent Cement



PGC: 470	Tin Size (ml)	Price
PVC-SOLVENT	500	£51.41



Steel Adaptors

Combination Nipple



PGC: 290	ID (")	Price
HT8CN	1/2	£2.08
HT12CN	3/4	£1.77
HT16CN	1"	£2.39
HT20CN	1 1/4	£2.75
HT24CN	1 1/2	£3.74
HT32CN	2"	£5.43
HT40CN	2 1/2	£7.72
HT48CN	3"	£11.08
HT64CN	4"	£16.81
HT80CN	5"	£38.80
HT96CN	6"	£42.89

Butt Weld Combination Nipple



PGC: 290	ID (")	Price
HT8W	1/2	£3.06
HT12W	3/4	£2.17
HT16W	1"	£2.40
HT20W	1 1/4	£3.25
HT24W	1 1/2	£3.72
HT32W	2"	£5.77
HT40W	2 1/2	£9.06
HT48W	3"	£12.63
HT64W	4"	£18.92
HT96W	6"	£43.78