

03

Air Preparation Equipment

Festo® FRLs and Air Preparation Units, Norgren Excelon® Modular Systems, Olympian® Plug-in Systems and Ported Filters and Regulators, PCL Air Treatment Units, Air Horns, Alarm Indicators



Filter/Regulator-Lubricators

03

- Complete combinations using pressure regulators, filter regulators, lubricators, distributor modules and many other accessories
- Value optimised polymer and rugged metal designs
- Modular units joined by a unique bolt system offering superior strength and rigidity
- High resistance to contamination in typical industrial environments
- Powder-coated for high corrosion protection
- Streamlined exterior is easy to keep clean
- Durable die-cast housing with no plastic covers to break or lose for long-life, trouble-free operation in harsh environments
- Units joined by one compression seal for simple assembly and leak-free operation
- Full range of filtration levels: 40 µm, 5 µm, 1 µm and 0.01 µm (Please ask our Sales Team for more information)
- Manual On-Off valve with lock for added safety
- Composite bowl with metal bowl guard
- Manual bowl drain or integrated, automatic bowl drain
- Removable threaded end plates on each unit
- Extremely robust tie-rod design for joining multiple units
- Optional digital indicator pressure switch with two switch outputs

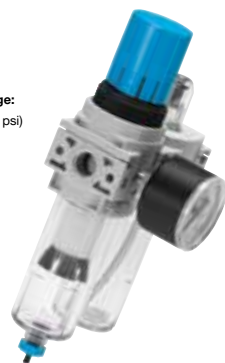
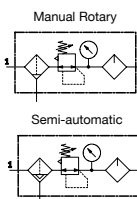
FRL Service Units, DB Series, Polymer Design

- High performance polymer with robust connection technology
- Can be combined with metal components of D Series units
- Connection sizes: G1/8, G1/4
- Flow Rate: 400 l/min to 650 l/min
- Grade of Filtration: 40 µm as standard (5 µm filters available on request)
- Basic compressed air preparation functions

Polymer Service Unit – DB Series

- **Temperature Range:**
-5°C to +50°C
- **Pressure Regulation Range:**
0.5 bar (7 psi) to 7 bar (101 psi)

Condensate Drain



PGC: 381	Festo Ref.	BSPP	Drain Type	Price
FRC-1/8-DB-7-MINI	537655	1/8	Manual	£64.58
FRC-1/4-DB-7-MINI	537654	1/4	Manual	£64.58
FRC-1/8-DB-7-MINI-H	537657	1/8	Semi-automatic	£75.01
FRC-1/4-DB-7-MINI-H	537656	1/4	Semi-automatic	£75.01
LFR-1/8-DB-7-MINI	539683	1/8	Manual	£42.43
LFR-1/4-DB-7-MINI	539685	1/4	Manual	£42.23
LFR-1/8-DB-7-MINI-H	539684	1/8	Semi-automatic	£52.56
LFR-1/4-DB-7-MINI-H	539686	1/4	Semi-automatic	£52.56
LR-1/8-DB-7-MINI	539681	1/8	-	£26.03
LR-1/4-DB-7-MINI	539682	1/4	-	£26.03
LR-1/8-DB-7-0-MINI	537642	1/8	-	£20.63
LR-1/4-DB-7-0-MINI	537643	1/4	-	£20.63

The following oils are recommended for Festo components:

Viscosity range to ISO 3448 class VG 32 32 mm²/s (cSt) at +40°C

- Festo Special Oil • ARAL Vitam GF 32 • BP Energol HLP 32
- Esso Nuto H 32 • Mobil DTE 24 • Shell Tellus Oil DO 32

FRL Service Units, D Series, Metal Design

- Sturdy and versatile metal series
- 3 body sizes: MINI, MIDI and MAXI (also available as MICRO on request)
- Connection sizes: G1/8, G1/4, G1/2, G1/2, G3/4, G1
- Flow Rate: 90 l/min to 8700 l/min
- Grade of Filtration: 40 µm as standard (5 µm filters available on request)
- Selected types in accordance with ATEX directive
- Massive range of functions

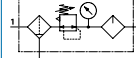
Metal Service Unit – D Series

- **Temperature Range:**
-10°C to +60°C
- **Pressure Control Range:**
0.5 bar (7 psi) to 7 bar (101 psi);
0.5 bar (7 psi) to 12 bar (174 psi)

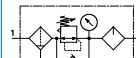


MICRO / MINI / MIDI

Manual Rotary Condensate Drain with Pressure Gauge

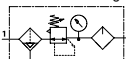


Semi-automatic Condensate Drain with Pressure Gauge

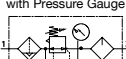


MAXI

Manual Rotary Condensate Drain with Pressure Gauge



Fully Automatic Condensate Drain with Pressure Gauge



PGC: 381	Festo Ref.	BSPP	Drain Type	Price
FRC-1/8-D-MINI	159604	1/8	Manual	£82.27
FRC-1/4-D-MINI	159605	1/4	Manual	£82.27
FRC-3/8-D-MIDI	159588	3/8	Manual	£116.28
FRC-1/2-D-MIDI	159590	1/2	Manual	£116.28
FRC-3/4-D-MAXI	159606	3/4	Manual	£264.36
FRC-1-D-MAXI	159607	1	Manual	£264.36
FRC-1/8-D-MINI-A	159608	1/8	Semi-automatic	£114.80
FRC-1/4-D-MINI-A	159609	1/4	Semi-automatic	£114.80
FRC-1/4-D-MIDI-A	186500	1/4	Semi-automatic	£148.81
FRC-3/8-D-MIDI-A	159589	3/8	Semi-automatic	£148.81
FRC-3/4-D-MAXI-A	159610	3/4	Fully Automatic	£296.89
FRC-1-D-MAXI-A	159611	1	Fully Automatic	£296.89
LFR-1/8-D-MINI	159630	1/8	Manual	£51.82
LFR-1/4-D-MINI	159631	1/4	Manual	£51.82
LFR-3/8-D-MIDI	159582	3/8	Manual	£69.37
LFR-1/2-D-MIDI	159584	1/2	Manual	£69.37
LFR-3/4-D-MAXI	159632	3/4	Manual	£168.71
LFR-1-D-MAXI	159633	1	Manual	£168.71
LFR-1/8-D-MINI-A	159634	1/8	Semi-automatic	£84.36
LFR-1/4-D-MINI-A	159635	1/4	Semi-automatic	£84.36
LFR-3/8-D-MIDI-A	159583	3/8	Semi-automatic	£101.91
LFR-1/2-D-MIDI-A	159585	1/2	Semi-automatic	£101.91
LFR-3/4-D-MAXI-A	159636	3/4	Fully Automatic	£201.25
LFR-1-D-MAXI-A	159637	1	Fully Automatic	£201.25
LR-1/8-D-MINI	159624	1/8	-	£31.80
LR-1/4-D-MINI	159625	1/4	-	£31.80
LR-1/2-D-MIDI	159581	1/2	-	£49.86
LR-3/4-D-MIDI	162581	3/4	-	£49.86
LR-3/4-D-MAXI	159626	3/4	-	£110.51
LR-1-D-MAXI	159627	1	-	£110.51

DB/D Series FRL Accessories

A range of accessories designed for use with the DB and D Series MINI, MIDI and MAXI FRL service units.

Connecting Plate Kit BSPP Thread



PGC: 381	Festo Ref.	BSPP	Price
PBL-1/8-DB-MINI	542787	1/8	£7.49
PBL-1/4-DB-MINI	542788	1/4	£7.49

Mounting Bracket



PGC: 381	Festo Ref.	Price
HFOE-D-MINI	159638	£4.00
HFOE-D-MIDI&MAXI	159593	£5.64
HRD-D-MINI	164936	£1.92
HRD-D-MIDI	162804	£2.28
HRD-D-MAXI	162805	£3.00

Lock



PGC: 381	Festo Ref.	Price
LRVS-MINI	193781	£7.86
LRVS-MIDI	193782	£9.64
LRVS-MAXI	193783	£12.89

Padlock



PGC: 381	Festo Ref.	Price
LRVS-D	193786	£7.80

Locknut



PGC: 381	Festo Ref.	Price
HMR-D-MINI	530026	£4.00
HMR-D-MIDI&MAXI	530025	£3.74

FESTO

Pre-Assembled Air Preparation Units – Boxed Sets

03

D-Series Air Preparation Unit – Boxed Set

1/4" & 1/2" Port Sizes

Proved a million times over
Ultra-robust design and maximum reliability, thanks to metal bodies, all metal bowl guards and a sturdy connection system.

Available fast, installed fast
Pre-assembled units complete isolation valves, exhaust air silencers and mounting brackets make this a quick and easy system to select and even quicker to mount.



Assists machine designers in complying with the **EUROPEAN MACHINERY DIRECTIVE**

- 1 Sturdy tied-rod connection system with robust threaded pins. Positive-locking connections for minimal leakage rates.
- 2 Coated smooth surfaces for enhanced corrosion protection & excellent ease of cleaning.
- 3 All-metal bowl guards & metal bodies for protection against mechanical impacts and chemical attack.



94/9/EC
For Gas & Dust
Zones 1, 2, 21 & 22

Maximum Temperature:
+60°C

Maximum Pressure:
16 bar (232 psi);
Pressure Gauge: to 10 bar (145 psi)

The complete solution!



Robust: All-metal bowl guard

Pre-assembled

Complete modular range

- Filter, regulator and optional air mist lubricator
- Lockable energy isolating valve
- Exhaust silencer at 77 db(A) for operator safety
- Red/green TPM pressure gauge
- Maintenance-free automatic condensate drain
- Supplied with mountings

PGC: 381	Size	Description	Port Size (")	Price
555734	MINI	LFR without Lubricator	1/4	£166.46
555733	MINI	FRC without Lubricator	1/4	£187.59
555735	MIDI	LFR without Lubricator	1/2	£185.22
555730	MIDI	FRC without Lubricator	1/2	£237.32



NORGREN

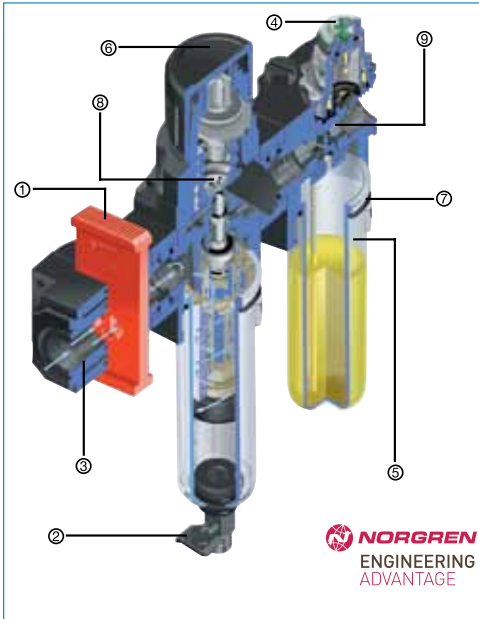
Excelon®

03

Excelon Modular System

Excelon®, the alternative modular air preparation system from Norgren. Although direct ported, thanks to a patented Quikclamp™ connection system, Excelon® can be used where both stand alone units or modular assemblies are required.

Just another example of Norgren's adaptability.



- 1 PATENTED QUIKCLAMP CONNECTION SYSTEM**
 Simple, speedy assembly of accessories and combination units.
 - 2 PATENTED QUARTER TURN MANUAL DRAIN**
 Simple 1/4 turn to operate. Features a threaded pipeway outlet.
 - 3 PATENTED SHUT-OFF VALVE**
 3/2 with a threaded exhaust and lockable blade for safe system isolation.
 - 4 LUBRICATOR SIGHT FEED DOME**
 Allows full 360° visibility and screwdriver adjustment for easy drip rate setting. Can be made tamper-resistant.
 - 5 BAYONET BOWLS**
 Easy removal for routine maintenance. Detent action prevents removal under pressure.
 - 6 PUSH TO LOCK ADJUSTING KNOB**
 Can be fitted with a tamper resistant cover.
 - 7 CAPTIVE 'O' RINGS**
 - 8 BALANCED VALVE**
 For improved regulation characteristics.
 - 9 LUBRICATOR SENSOR**
 Helps to maintain constant oil density with varying flow.
- PLUS many more design features and accessories.

Filter/Regulators & Lubricators - Boxed Sets

Boxed Sets include filter/regulator and micro-fog lubricator complete with exhausting shut-off valve, pressure gauge and mounting brackets.

The micro-fog lubricator* is suitable for most general pneumatic applications. Fitted with push to lock knob; also available as tamper-resistant cover option.

Port Size: G1/4 (Excelon 72)
G1/2 (Excelon 74)

Nominal Flow @ 6.3 bar (dm³/s): 24

Drain Type: Automatic or manual

Medium: Compressed air only

Maximum Pressure: 10 bar

Ambient Temperature: -20°C to +50°C
(Please contact our Sales Team for use below +2°C)

Materials:

Body: zinc (Excelon 72);
aluminium (Excelon 74)
Bowl: polycarbonate (72);
polycarbonate with steel guard (74)

Element: Sintered polypropylene

Lubricator Sight Feed Dome: Transparent nylon

Elastomers: Neoprene and nitrile

Outlet Pressure Adjustment Range:
0.3 bar to 10 bar

Threads: ISO G parallel

Filter Element: 40 µm

Bowl Type: Transparent (72)

Transparent guarded (74)

Lubrication: Micro-fog

Includes wall-mounting brackets and outlet pressure gauge.

* Use micro-fog models in applications containing one or more points of lubrication.

BL72 Transparent Bowl Filter/Regulator & Lubricator

BSPB Thread (ISO G)

- Polycarbonate bowl standard
- Zinc body
- Neoprene®, nitrile and Geolast™ elastomeric materials.
- Transparent nylon liquid level indicator lens for metal bowl
- True modularity with Norgren Quikclamp™ connections
- Quick release bayonet bowl
- High-efficiency water and particle removal

Filter/Regulator:

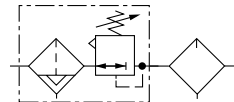
- Acetal bonnet
- Sintered polypropylene element
- Brass valve
- Regulator balanced valve minimises effect of variation in the inlet pressure on the outlet pressure

Lubricator:

- Transparent nylon sight dome
- Lubricator flow sensor provides a nearly constant oil/air ratio over a wide range of air flows
- All around (360°) visibility of the lubricator sight-feed dome simplifies installation and adjustment
- Micro-fog lubricator for the most effective lubrication

Ambient Temperature:
-20°C to +50°C

Maximum Pressure:
10 bar (145 psi)



PGC: 170	BSPB	Filter Element (µm)	Outlet Pressure Adjustment Range (bar)	Operation	Drain Type	Price
BL72-201GA	1/4	40	0.3 - 10	Relieving	Automatic	£141.48
BL72-221G	1/4	40	0.3 - 10	Relieving	Manual	£82.59

BL74 Transparent Guarded Bowl Filter/Regulator & Lubricator

BSPP Thread (ISO G)

- Aluminium body, transparent polycarbonate with steel bowl guard
- Quick release bayonet bowl
- High efficiency water and particle removal

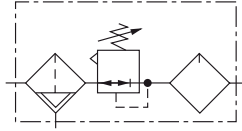
Filter/Regulator:

- Aluminium bonnet
- Sintered plastic element
- Brass valve
- Regulator balanced valve minimises effect of variation in the inlet pressure on the outlet pressure

Lubricator:

- Transparent nylon sight-feed dome, Neoprene® and nitrile elastomers
- Lubricator flow sensor provides a nearly constant oil/air ratio over a wide range of air flows
- All around (360°) visibility of the lubricator sight-feed dome simplifies installation and adjustment
- Micro-fog lubricator for the most effective lubrication

Operating Temperature*:
 -20°C to +80°C

Maximum Pressure:
 17 bar (246 psi)


PGC: 170	BSPP	Filter Element (µm)	Outlet Pressure Adjustment Range (bar)	Operation	Drain Type	Price
BL74401G	1/2	40	0.3 - 10	Relieving	Automatic	£235.06

General Purpose Filters

General purpose air filter units designed for use as a single in-line unit or as part of Norgren's Excelon® modular compressed air preparation supply system. As a modular component, the air filter can quickly be attached to regulators, lubricators, smooth start/exhaust valves, safety lockout valves and pipe adapters. With Quikclamp™ and wall bracket accessories, a complete compressed air supply system can be assembled and mounted in minutes.

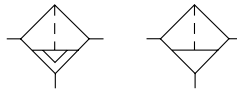
The F72G, F73G and F74G series general purpose air filters are high efficient water and particle air filters for compressed air systems. The highly visible liquid level indicators make it easy to detect water removal and the 40 µm filter element is adequate for most general pneumatic applications.

- For particle and water removal in compressed air systems
- In-line or modular installation
- High-efficiency air filters for water and particle removal
- Quick release bayonet bowl
- Highly visible, prismatic liquid level indicator lens on metal bowls
- Optional service indicator turns from green to red when filter element needs replacing
- Optional electrical service indicator also available
- Modular installations with Excelon® F72G, F73G and F74G Series can be made to suit particular applications

F72G, F73G & F74G General Purpose Compressed Air Filter

BSPP Thread (ISO G)

-
- Operating Temperature*:**
-
- Transparent Bowl: -20°C to +50°C;
-
- F72G Metal Bowl: -20°C to +65°C;
-
- F74G Metal Bowl: -20°C to +80°C
-
-
- Maximum Inlet Pressure:**
-
- Transparent Bowl: 10 bar (145 psi);
-
- Metal Bowl: 17 bar (246 psi);
-
- F72G with Metal Bowl and Auto Drain: 10 bar (145 psi)


Specifications
Medium: Compressed air only

F72G Series Materials

Body: Zinc
Transparent Bowl: Polycarbonate
Guard for Transparent Bowl: Zinc
Metal Bowl Liquid Level Indicator Lens: Transparent nylon
Element: Sintered polypropylene
Elastomers: Neoprene® and nitrile

F73G & F74G Series Materials

Body: Aluminium
Transparent Bowl: Polycarbonate
Transparent with Guard: Polycarbonate, steel guard
Metal Bowl: Aluminium
Metal Bowl Liquid Level Indicator Lens: Transparent nylon
Element: Sintered polypropylene

PGC: 170	BSPP	Filter Element (µm)	Flow** (dm ³ /s)	Bowl Type	Drain Type	Price
F72G-2GN-AL3	1/4	40	30	Transparent	Automatic	£46.83
F72G-2GN-QT3	1/4	40	30	Transparent	Manual	£23.59
F72G-3GN-QT3	3/8	40	30	Transparent	Manual	£23.59
F73G-3GN-AD3	3/8	40	35	Metal with Level Indicator	Automatic	£86.73
F74G-4GN-AP3	1/2	40	83	Guarded Transparent	Automatic	£59.69
F74G-4GN-QP3	1/2	40	83	Guarded Transparent	Manual	£37.58

* Air supply must be dry enough to avoid ice formation at temperatures below +2°C.

** Typical flow with a 40 µm element at 6.3 bar (90 psi) inlet pressure and 0.35 bar (5 psi) pressure drop.

Filter/Regulators

The B72G Series airline filter/pressure regulators are designed for use as a single in-line unit or as part of a Norgren's Excelon® modular compressed air preparation supply system. As a modular component, this air filter/regulator can quickly be attached to lubricators, smooth start/exhaust valves, safety lockout valves and pipe adapters. With Quikclamp™ and wall bracket accessories, a complete compressed air supply system can be assembled and mounted in minutes. This air filter/regulator is designed for high efficiency water and particle removal, and come with a push to lock adjusting knob.

- Balanced valve design for optimum pressure control
- Full flow gauge ports
- High-efficiency water and particle removal
- Quick release bayonet bowl
- Highly-visible, prismatic liquid level indicator lens on metal bowls
- Push-to-lock adjusting knob with tamper resistant accessory
- Optional patented quarter turn manual drain
- Excelon® design allows in-line or modular installation with other Excelon® products

B72G, B73G & B74G Filter/Regulator

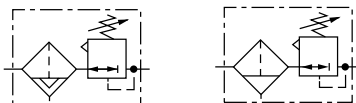
BSPP Thread (ISO G)



Ambient Temperature*:
 Transparent Bowl: -20°C to +50°C;
 B72G Metal Bowl: -20°C to +65°C;
 B74G Metal Bowl: -20°C to +80°C



Maximum Inlet Pressure:
 Transparent Bowl: 10 bar (145 psi);
 Metal Bowl: 17 bar (246 psi);
 B72G with Metal Bowl and Auto Drain: 10 bar (145 psi)



Specifications

Medium: Compressed air only

B72G Series Materials

Body: Zinc
Bonnet: Acetal
Valve: Brass
Transparent Bowl: Polycarbonate
Element: Sintered polypropylene
Elastomers: Neoprene® and nitrile

B73G & B74G Series Materials

Body: Aluminium
Bonnet: Aluminium
Valve: Brass
Transparent Bowl: Polycarbonate
Guarded Transparent Bowl: Polycarbonate with steel
Element: Sintered polypropylene
Elastomers: Neoprene® and nitrile

PGC: 170	BSPP	Filter Element (µm)	Flow** (dm ³ /s)	Bowl Type	Operation	Lubrication	Price
B72G-2GK-AL3-RMN	1/4	40	38	Transparent	Relieving	Automatic	£61.46
B72G-2GK-QT3-RMN	1/4	40	38	Transparent	Relieving	Manual	£35.13
B73G-3GK-AT3-RMN	3/8	40	50	Transparent	Relieving	Automatic	£102.06
B73G-3GK-AP3-RMN	3/8	40	50	Transparent	Relieving	Automatic	£114.89
B74G-4GK-AP3-RMN	1/2	40	100	Guarded Transparent	Relieving	Automatic	£94.48
B74G-4GK-QP3-RMN	1/2	40	100	Guarded Transparent	Relieving	Manual	£65.78

* Air supply must be dry enough to avoid ice formation at temperatures below +2°C.

** Typical flow with a 40 µm element at 10 bar (150 psi) inlet pressure and 1 bar (15 psi) pressure drop from set of 6.3 bar.

Pressure Regulators

The R72G Series air line pressure regulators are designed for use as a single in-line unit or as part of a Norgren's Excelon® modular compressed air preparation supply system. As a modular component, this air regulator can quickly be attached to filters, lubricators, smooth start/exhaust valves, safety lockout valves and pipe adapters. With Quikclamp™ and wall bracket accessories, a complete compressed air supply system can be assembled and mounted in minutes.

- Balanced valve design minimises pressure variations
- Push-to-lock adjusting knob with tamper resistant accessory
- Design allows in-line or modular installation with other Excelon® products
- Relieving models allow reduction of downstream pressure when the system is dead-ended
- Manifold regulators can be banked together to provide numerous regulated pressures from a common primary pressure

R72G, R73G & R74G Regulator

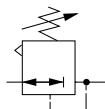
BSPP Thread (ISO G)



Ambient Temperature*:
 R72G: -20°C to +65°C;
 R73G, R74G: -20°C to +80°C



Maximum Inlet Pressure:
 20 bar (290 psi)



Specifications

Medium: Compressed air only

R72G Series Materials

Body: Zinc
Bonnet: Acetal
Valve: Brass
Bottom Plug: Acetal
Elastomers: Nitrile

R73G & R74G Series Materials

Body: Aluminium
Bonnet: Aluminium
Valve: Brass
Bottom Plug: Acetal
Elastomers: Nitrile

PGC: 170	BSPP	Flow** (dm ³ /s)	Outlet Pressure Adjustment Range (bar)	Operation	Price
R72G-2GK-RMN	1/4	33	0.3 - 10	Relieving	£29.02
R72G-3GK-RMN	3/8	64	0.3 - 10	Relieving	£29.46
R74G-4GK-RMN	1/2	105	0.3 - 10	Relieving	£45.43

* Air supply must be dry enough to avoid ice formation at temperatures below +2°C.

** Typical flow with a 40 µm element at 10 bar (150 psi) inlet pressure and 1 bar (15 psi) pressure drop from set of 6.3 bar.



Micro-Fog Lubricators

The L72M Series air line lubricators are designed for use as a single in-line unit or as part of Norgren's Excelon® modular compressed air preparation supply system. As a modular component, this pneumatic lubricator can quickly be attached to air regulators, filters, smooth start/exhaust valves, safety lockout valves and pipe adapters. With Quikclamp™ and wall bracket accessories, a complete compressed air supply system can be assembled and mounted in minutes.

The L72M lubricators come in micro-fog models for pneumatic applications containing one or more points of lubrication. Uses include lubrication of cylinders and air driven devices like air line tools or pneumatic screwdrivers.

- In-Line or modular installation
- Quick release bayonet bowl
- Micro-fog and oil-fog
- Flow sensor provides a nearly constant oil/air ratio over a wide range of flows
- Highly visible, prismatic liquid level indicator lens on metal bowls
- All round (360°) visibility of sight-feed dome for ease of drip rate setting

L72M, L73M & L74M Lubricator

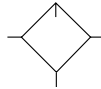
BSPP Thread (ISO G)



Ambient Temperature*:
Transparent Bowl: -20°C to +50°C;
L72M Metal Bowl: -20°C to +65°C;
L74M Metal Bowl: -20°C to +80°C



Maximum Operating Pressure:
Transparent Bowl: 10 bar (145 psi);
Metal Bowl: 17 bar (246 psi)



Specifications

Medium: Compressed air only

L72M Series Materials

Body: Zinc
Metal Bowl: Zinc
Liquid Level Indicator Lens (Metal Bowl): Transparent nylon
Transparent Bowl: Polycarbonate
Sight-feed Dome: Transparent nylon
Elastomers: Neoprene®, nitrile and Geolast® (thermoplastic rubber)

L73M & L74M Series Materials

Body: Aluminium
Metal Bowl: Aluminium
Guarded Transparent Bowl: Polycarbonate with steel guard
Liquid Level Indicator Lens (Metal Bowl, 0,1 & 0,2 litre): Transparent nylon, Pyrex® optional
Elastomers: Neoprene® and nitrile

PGC: 170	BSPP	Flow** (dm3/s)	Bowl Type	Bowl Capacity (litres)	Price
L72M-2GP-ETN	1/4	24	Transparent	0.04	£32.57
L72M-3GP-ETN	3/8	24	Transparent	0.04	£33.08
L73M-3GP-ETN	3/8	64	Transparent	0.1	£53.58
L74M-4GP-EPN	1/2	70	Guarded Transparent	0.2	£50.82

* Air supply must be dry enough to avoid ice formation at temperatures below +2°C.
** Typical flow with 6.3 bar (90 psi) inlet pressure and 0.35 bar (5 psi) pressure drop.

Soft Start/Dump Valves

The P72F Series soft start/dump valves are designed for use as a single in-line unit or as part of Norgren's Excelon® modular compressed air preparation supply system. As a modular component, the valve can quickly be attached to filters, lubricators, safety lockout valves and pipe adapters. With Quikclamp™ and wall bracket accessories, a complete compressed air supply system can be assembled and mounted in minutes. The soft start valve controls the start up and shut down of pneumatic air supply by quickly controlling the air pressure to eliminate the hammering effect of sudden air pressure to pneumatic equipment. The dump valve blocks the inlet air supply and exhausts the downstream air when the pilot signal is removed.

- Excelon® design allows in-line or modular installation
- Solenoid pilot or air pilot operation
- Designed primarily for equipment start-up and shutdown
- Optional manual slide can be padlocked in closed position
- Blocks inlet air and exhausts downstream air when pilot signal is removed or when the optional manual lockout slide is closed
- Controls increase of downstream pressure on start up. Cylinders and other air operated devices are eased into normal operating positions, reducing the possibility of equipment damage and hazards to the user

Air Pilot Port: M5 (P72F); Rc1/4 (1/4" BSPT) (P74F)
Exhaust Port: Rc1/4 (1/4" BSPT) (P72F); G1/2 (P74F)
Forward Flow (Cv): 1.59 (P72F); P74F (4.4)

Snap Pressure: Full flow when downstream pressure reaches 50-80% of inlet pressure



P72F & P74F Solenoid Operated

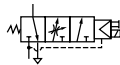
Soft Start/Dump Valve
BSPP Thread (ISO G)



Component Temperature: +5°C to +50°C



Operating Pressure: 3 bar (43 psi) to 10 bar (145 psi)



Specifications

Medium: Compressed air

Materials

Body: (72) Zinc alloy (74) Aluminium
Top Plate & Exhaust Plate: Zinc
Elastomers: Synthetic materials
Filter Discs: Sintered plastic
Internal Components: Brass/steel

Supplied with 22 mm, 24 V DC, 2 W solenoids

PGC: 170	BSPP	Flow** (dm3/s)	Price
P72F-2GC-PFN	1/4	21	£162.97
P74F-4GC-PFN	1/2	57	£229.51

P72F & P74F Air Pilot Operated

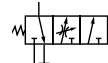
Soft Start/Dump Valve
BSPP Thread (ISO G)



Ambient Temperature*: -20°C to +50°C (72); -20°C to +80°C (74)



Operating Pressure: 3 bar (43 psi) to 10 bar (145 psi)



Specifications

Medium: Compressed air

Materials

Body: (72) Zinc alloy (74) Aluminium
Top Plate & Exhaust Plate: Zinc
Elastomers: Synthetic materials
Filter Discs: Sintered plastic
Internal Components: Brass/steel

Part No.	BSPP	Flow** (dm3/s)	Price
P74F-4GA-NNN	1/2	57	£235.96

3-Port 2-Position Shut Off Valves

- Ideal for isolating sub-systems not in use
- Easy to operate
- Lockable in closed position

3/2 Shut Off Valve

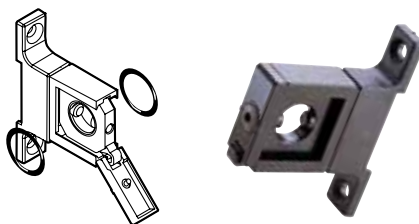
72 & 74 Series
BSPP Thread (ISO G)



PGC: 170	BSPP	Series	Price
T72T-2GA-P1N	1/4	72	£25.68
T74T-4GA-P1N	1/2	74	£54.82

Quickclamp™ & Wall Bracket

72, 73 & 74 Series



- One piece — no loose parts
- Uniquely, connected products can be rotated in 90° increments
- Secure mounting to a wall, panel or machine surface

PGC: 170	Series	Price
4214-52	72	£8.52
4314-52	73 & 74	£15.88

Quickclamp™ and Wall Mounting Brackets

- Allows easy connection of one Excelon® unit to another
- One piece — no loose parts
- Uniquely designed products can be rotated in 90° increments



Maximum Temperature:
+65°C (72); +80°C (73, 74)

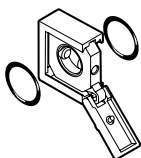


Maximum Pressure:
17 bar (246 psi)

- Use with all Excelon® products to provide modular installation capability
- Flanges on the products slide into V-grooves in the Quickclamp™
- Two face-sealing O-rings in the Quickclamp™ provide a positive seal when the clamp is closed and the captive screw is tightened
- Tighten screw with a 3 mm hex wrench or a T15 torx wrench

Quickclamp™

72, 73 & 74 Series



- One-piece modular connection system for Excelon® 72, 73 & 74 Series
- Wall mounting unit provides secure fixing

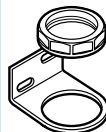
PGC: 170	Series	Price
4214-51	72	£6.68
4314-51	73 & 74	£10.67

Neck Mounting Brackets and Panel Nuts

- Secure mounting for pressure regulators, filter/regulators and pressure relief valves

Neck Mounting Bracket

72, 73 & 74 Series

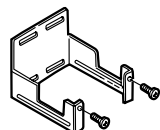


- For mounting Excelon® 72, 73 & 74 Series units by the neck
- Includes zinc panel nut

PGC: 170	Series	Price
74316-50	72	£4.68
4461-50	73	£8.23
4368-51	74	£13.64

Wall Mounting Bracket

72 & 74 Series



- Provides secure wall mounting for all individual Excelon® products*

* Except P72, P74, T73 and T74 units

PGC: 170	Series	Price
4224-50	72	£6.06
4424-50	73	£8.67
4324-50	74	£9.39

Panel Nut

72, 73 & 74 Series



- Zinc panel nut
- Used to panel mount Excelon® 72, 73 & 74 Series pressure regulators, filter-regulators and pressure relief valves

PGC: 170	Series	Price
4248-89	72	£2.05
5191-88	73	£4.35
4348-89	74	£6.16

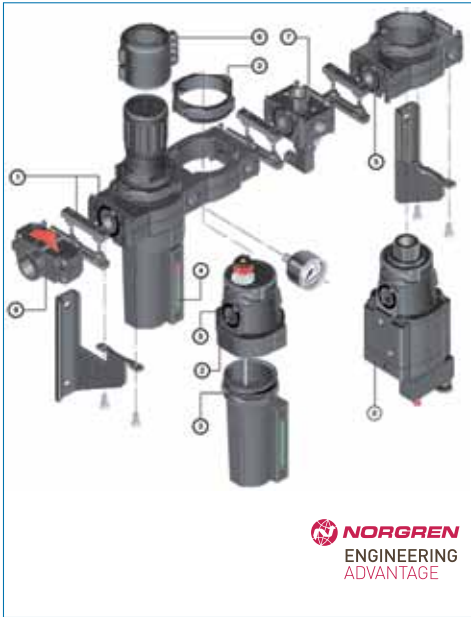


NORGREN

Olympian Plus Plug-in System

03

Olympian® Plus is the new generation FRL system from Norgren, world leaders in airline equipment. The unique Olympian® plug-in design has been updated to set new standards for ease of use and system flexibility. The Olympian® Plus range is a modular FRL system covering the range of BSP filters, filter/regulators, lubricators, regulators and associated accessories.



NORGREN
ENGINEERING
ADVANTAGE

- ① **PLUG IN UNITS**
Detented quarter turn clamp prevents removal under pressure and interchangeability with old 13 Series units
- ② **QUICK CONNECT YOKE SYSTEM**
Simple speedy assembly
- ③ **BAYONET BOWLS**
Easily removed for maintenance and detent action prevents removal under pressure
- ④ **UNIQUE PRISMATIC SITE GLASS**
High visibility of liquid level and colour change indicates service requirement
- ⑤ **CAPTIVE 'O' RINGS**
Easily assembled with no awkward loose parts
- ⑥ **SOFT START DUMP VALVES**
Provide controlled increased in pressure on system start up and high exhaust flow capacity
- ⑦ **3/2 SHUT OFF VALVE**
Easy to operate exhausting slide valve
- ⑧ **TAMPER PROOF CAP**
Simple accessory prevents unauthorised adjustment of pressure
- ⑨ **PORTING BLOCK MOUNTED PRESSURE SWITCH**
Adjustable pressure switch for providing feedback to monitoring systems

Filter/Regulators & Lubricators - Boxed Sets

Complete air processing units pre-assembled, ready to install. Boxed sets include filter/regulator and micro-fog* lubricator complete with exhausting shut-off valve, gauge and mounting brackets. Filter/regulator and micro-fog lubricator combinations. Filter and micro-fog lubricator combinations.

Port Size: 1/2"
Nominal Flow @ 6.3 bar (dm³/s): 72
Drain Type: Automatic
Medium: Compressed air only
Inlet Maximum Pressure: 17 bar (246 psi)
Ambient Temperature: -20°C to +80°C
(Please contact our Sales Team for use below +2°C)

Materials:
Body and Yoke: zinc alloy (Olympian BL & FL64);
Bowls: aluminium (BL & FL64)

Element: Sintered plastic
Lubricator Sight Feed Dome: Polycarbonate

Elastomers: Synthetic rubber
Outlet Pressure Adjustment Range: 0.3 bar (4.3 psi) to 10 bar (145 psi)

Threads: ISO G parallel
Filter Element: 40 µm
Bowl Type: Aluminium
Lubricator: Micro-fog

* Use micro-fog models in applications containing one or more points of lubrication.

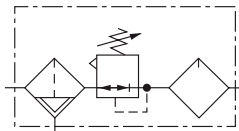
BL64 Aluminium Bowl Filter/Regulator & Lubricator

BSP Thread (ISO G)

Ambient Temperature*:
-20°C to +80°C

Inlet Maximum Pressure:
17 bar (246 psi)

- Olympian® Plus plug-in design
- Lockable regulator knob
- Quarter-turn graphite impregnated clamp rings
- Push-to-lock adjusting knob with tamper resistant option
- High-visibility Grilamid® prismatic sight glass*
- Quick release bayonet bowls
- High-efficiency water and particle removal
- Constant oil density output with varying flow
- Micro-fog lubricator
- Units assembled for left to right flow
- Safety detent action prevents removal under pressure



Filter/Regulator:
• Aluminium bonnet
• Sintered plastic elements

Lubricator:
• Polycarbonate sight dome

* UK and other patents pending

PGC: 170	Port Size (BSPP)	Bowl Type	Filter Element (µm)	Outlet Pressure Adjustment Range (bar)	Operation	Filter Drain	Price
BL64-401	1/2	Aluminium	40	0.3 - 10	Relieving	Automatic	£266.89
BL64-421	1/2	Aluminium	40	0.3 - 10	Relieving	Manual	£237.42

Filter & Lubricator Combinations

- Olympian® Plus plug-in design
- High-efficiency water and particle removal
- Quick release bayonet bowls
- High-visibility prismatic sight glass††
- Constant oil density output with varying flow

i Units assembled for left to right flow.

FL64 Filter & Lubricator Combination

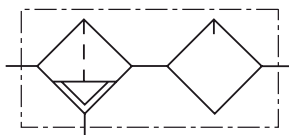
BSPB Thread (ISO G)



Operating Temperature*:
-20°C to +80°C



Maximum Inlet Pressure:
17 bar (246 psi)



Specifications

Medium: Compressed air only

Gauge Ports: Rc 1/8

Lubricator: Start point at 6.3 bar (91.3 psi); 1.5 dm³/s
Nominal bowl capacity: 0.2 litres standard

FL64 Series Materials

Body: Zinc alloy

Bonnet: Aluminium

Bowl: Aluminium

Sight Dome: Grilamid® transparent nylon

Liquid Level Indicator: Transparent nylon

Element: Sintered plastic

Elastomers: Synthetic rubber

†† UK and other patents pending

PGC: 170	Port Size (BSPP)	Filter Element (µm)	Flow** (dm ³ /s)	Bowl Type	Drain Type	Price
FL64-608	3/4	40	49	Metal	Automatic	£180.87
FL64-628	3/4	40	49	Metal	Manual	£139.50

* Air supply must be dry enough to avoid ice formation at temperatures below +2°C.

** Maximum flow with a 40 µm element at 10 bar (145 psi) inlet pressure and 0.5 bar (7 psi) pressure drop.

Filter/Regulator & Lubricator Combinations

- Olympian® Plus plug-in design
- High-efficiency water and particle removal
- Quick release bayonet bowls
- High-visibility prismatic sight glass††
- Push-to-lock adjusting knob with tamper resistant option
- Constant oil density output with varying flow

BL64 Filter/Regulator & Lubricator Combination

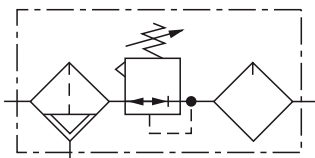
BSPB Thread (ISO G)



Operating Temperature*:
-20°C to +80°C



Maximum Inlet Pressure:
17 bar (246 psi)



Specifications

Medium: Compressed air only

Gauge Ports: Rc 1/8

Lubricator: Start point at 6.3 bar (91.3 psi); 1.5 dm³/s
Nominal bowl capacity: 0.2 litres standard

Recommended Regulating Pressure†: 0.3 bar (4.3 psi)
to 10 bar (145 psi)

† Can be adjusted to zero bar outlet and, generally, to pressures in excess of those specified.

BL64 Series Materials

Body: Zinc alloy

Bonnet: Aluminium

Bowl: Aluminium (guarded polycarbonate optional)

Sight Dome: Grilamid® transparent nylon

Liquid Level Indicator: Transparent nylon

Element: Sintered plastic

Elastomers: Synthetic rubber

†† UK and other patents pending

PGC: 170	Port Size (BSPP)	Filter Element (µm)	Flow** (dm ³ /s)	Outlet Pressure Adjustment Range (bar)	Bowl Type	Drain Type	Lubricator	Operation	Price
BL64-408	1/2	40	37	0.3 - 10	Metal	Automatic	Oil-Fog	Relieving	£203.97
BL64-428	1/2	40	37	0.3 - 10	Metal	Manual	Micro-Fog	Relieving	£162.59
BL64-608	3/4	40	37	0.3 - 10	Metal	Automatic	Oil-Fog	Relieving	£220.28

General Purpose Filters

- Olympian® design allows quick, easy modular installation with other Olympian® products
- Effective liquid removal and positive solid filtration
- Large filter element area for minimum pressure drop
- Standard options include element service indicator, manual drains and alternative filter elements

- Ported design is excellent for single unit 'stand alone' applications
- Optional visual service indicator turns from green to red when the filter element needs to be replaced
- Optional electrical service life indicator provides electrical output when the filter element needs to be replaced (F68G)

i This unit is to be used in conjunction with a ported yoke.

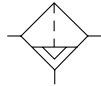
F64G & F68G General Purpose Filter



Ambient Temperature*:
-20°C to +80°C



Operating Pressure:
0 bar (0 psi) to 17 bar (246 psi)



Automatic Drain



Manual Drain



Yoke included

Specifications

Medium: Compressed air only

F64G Series Materials

Body: Zinc alloy
Bowl: Aluminium
Liquid Level Indicator: Grilamid® transparent nylon
Element: Sintered plastic
Elastomers: Synthetic rubber

F68G Series Materials

Body: Zinc alloy
Bowl: Aluminium
Liquid Level Indicator: Pyrex®
Element: Polypropylene
Elastomers: Synthetic rubber

PGC: 170	Port Size (BSPP)	Filter Element (µm)	Flow** (dm ³ /s)	Bowl Type	Drain Type	Price
F64G-4GN-AD3	1/2	40	75	Metal	Automatic	£105.88
F64G-4GN-MD3	1/2	40	75	Metal	Manual	£63.26
F68G-6GN-AR3	3/4	40	160	Metal	Automatic	£200.16
F68G-6GN-MR3	3/4	40	160	Metal	Manual	£201.70

* Air supply must be dry enough to avoid ice formation at temperatures below +2°C.

** Typical flow with a 40 µm element at 6.3 bar (90 psi) inlet pressure and 0.35 bar (5 psi) pressure drop.

- Olympian® plug-in design
- High flow general purpose regulator
- Mount in any direction
- Robust and compact
- Large valve and diaphragm

- Diaphragm and balanced valve design ensure excellent regulation characteristics
- Non-rising adjusting knob has snap-action lock
- Optional tamper resistant lock
- Standard options include non-relieving models and alternative pressure ranges

i This unit is to be used in conjunction with a ported yoke.

R64G & R68G General Purpose Regulator

*** Air supply must be dry enough to avoid ice formation at temperatures below +2°C.

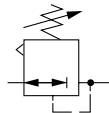
**** Typical flow with 10 bar (150 psig) from set of 6.3 bar (90 psig) and 1 bar (15 psig) pressure drop.



Ambient Temperature**:**
-20°C to +80°C



Maximum Inlet Pressure:
17 bar (246 psi) (R64G);
21 bar (304 psi) (R68G)



Yoke not included

Specifications

Medium: Compressed air only

Gauge Ports: G 1/8

R64G Series Materials

Body: Zinc alloy
Bonnet: Aluminium
Valve: Brass
Elastomers: Synthetic rubber

R68G Series Materials

Body: Aluminium
Bonnet: Aluminium
Adjusting Knob: Acetal resin
Optional T-bar Adjusting Screw: Steel
Elastomers: Synthetic rubber

PGC: 170	Port Size (BSPP)	Outlet Pressure Adjustment Range (bar)	Flow**** (dm ³ /s)	Operation	Price
R64G-NNK-RMN	1/4 - 3/4	0.3 - 10	120	Relieving	£49.32
R68G-NNK-RLN	3/4 - 1 1/2	0.4 - 8	150	Relieving	£95.79

Filter/Regulators

- Olympian® design allows quick, easy modular installation with other Olympian® products
- High-efficiency water removal
- Excellent regulation characteristics
- Non-rising adjusting knob has snap-action lock
- Tamper resistant option for adjusting knob
- Quick release bayonet
- High-visibility prismatic sight glass

03

ⓘ This unit is to be used in conjunction with a ported yoke.

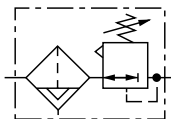
B64G & B68G Filter/Regulator



Operating Temperature:
Guarded Transparent Bowl: -20°C to +50°C;
Metal Bowl: -20°C to +80°C;



Maximum Pressure:
Guarded Transparent Bowl: 10 bar (145 psi);
Metal Bowl: 17 bar (246 psi)



Yoke included

Specifications

Port Size: 1/4" to 3/4" (B64G); 3/4" to 1 1/2" (B68G)
Medium: Compressed air only

B64G Series Materials

Body: Zinc
Bonnet: Aluminium
Bowl: Aluminium
Valve: Brass
Liquid Level Indicator: Transparent nylon
Element: Sintered plastic
Elastomers: Synthetic rubber

B68G Series Materials

Body: Aluminium
Bonnet: Aluminium
Adjusting Knob: Acetal resin
Sight Glass: Pyrex®
Element: Sintered bronze
Elastomers: Synthetic rubber

PGC: 170	Port Size (BSPP)	Filter Element (µm)	Flow** (dm ³ /s)	Bowl Type	Outlet Pressure Adjustment Range (bar)	Drain Type	Operation	Price
B64G-4GK-AD3-RMN	1/2	40	106	Metal	0.3 - 10	Automatic	Relieving	£146.53
B64G-4GK-MD3-RMN	1/2	40	106	Metal	0.3 - 10	Manual	Relieving	£103.88
B68G-6GK-AR3-RLN	3/4	40	230	Metal	0.4 - 8	Automatic	Relieving	£281.63

* Air supply must be dry enough to avoid ice formation at temperatures below +2°C.

** Typical flow with a 40 µm element at 10 bar (150 psi) inlet pressure and 1 bar (15 psi) pressure drop from set of 6.3 bar (90 psi).

High Efficiency Oil Removal Filters

- Olympian® plug-in design
- High-efficiency oil and particle removal
- Quick release bayonet
- High-visibility prismatic sight glass*
- Coalescing element
- Service life indicator
- Diaphragm and balanced valve design ensure excellent regulation characteristics
- Non-rising adjusting knob has snap-action lock
- Optional tamper resistant lock
- Standard options include non-relieving models and alternative pressure ranges

ⓘ This unit is to be used in conjunction with a ported yoke.

F64H & F68H 'Puraire'® High Efficiency Oil Removal Filter

* Air supply must be dry enough to avoid ice formation at temperatures below +2°C.

** To maintain oil content 0.01 mg/m³ at 6.3 bar (90 psi).



Ambient Temperature*:
-20°C to +65°C



Maximum Inlet Pressure:
17 bar (246 psi)



Yoke included

Specifications

Medium: Compressed air only
Remaining Oil Content: 0.01 mg/m³ at 6.3 bar (90 psi)

F64H Series Materials

Body: Zinc
Bowl: Aluminium with liquid level indicator
Sight Glass: Transparent nylon
Element: Composite materials
Elastomers: Synthetic rubber

F68H Series Materials

Body: Aluminium
Bowl: Aluminium
Sight Glass: Pyrex®
Element: Composite materials
Elastomers: Synthetic rubber

* UK and other patents pending

PGC: 170	Port Size (BSPP)	Flow** (dm ³ /s)	Bowl Type	Drain Type	Price
F64H-3GD-AD0	3/8	28	Metal	Automatic	£238.70
F64H-4GD-AD0	1/2	28	Metal	Automatic	£238.70
F68H-8GD-AD0	1	60	Metal	Automatic	£435.06

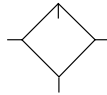
Lubricators

- Olympian® design allows quick, easy modular installation with other Olympian® products
- Constant oil density output with varying flow
- Easy fill with quick release bayonet bowl
- High visibility prismatic sight glass
- Use micro-fog models in applications with one or more points of lubrication
- Use oil-fog models to lubricate a single tool, cylinder or other air driven device

ⓘ This unit is to be used in conjunction with a ported yoke.

L64M Lubricator

- Operating Temperature*:** -20°C to +80°C
- Maximum Pressure:** 17 bar (246 psi)



Yoke included

Specifications

Medium: Compressed air only
Micro-Fog: 3.2 scfm (1.5 dm³/s)

L64M Series Materials

Body: Zinc
Yoke: Zinc
Bowl: Aluminium
Liquid Level Indicator: Transparent nylon
Sight Feed Dome: Grilamid® (Nylon 12)
Elastomers: Synthetic rubber

PGC: 170	Port Size (")	Bowl Type	Price
L64M-2GP-EDN	1/4	Metal	£73.56
L64M-3GP-EDN	3/8	Metal	£75.36
L64M-4GP-EDN	1/2	Metal	£73.56
L64M-6GP-EDN	3/4	Metal	£90.20

* Air supply must be dry enough to avoid ice formation at temperatures below +2°C.

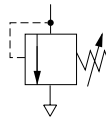
Pressure Relief Valves

- Olympian® Plus plug-in design
- Olympian® relief valves protect compressed air systems from over-pressurisation by retarding excessive pressure build up
- High relief capacity
- Threaded relief port for silencer or piped exhaust
- Integral pilot design provides superior sensitivity, accuracy, and quick response to over-pressure conditions
- Yoke must be ordered separately

ⓘ This unit is to be used in conjunction with a ported yoke.

V64H & V68H Relief Valve

- Temperature Range*:** -20°C to +80°C
- Maximum Operating Pressure:** 10 bar (145 psi)



Yoke not included

Specifications

Medium: Compressed air only
Gauge Port: G1/8
Relief Port:
 V64 Series: G1/2
 V68 Series: G1

V64H Series Materials

Body & Bonnet: Zinc alloy
Bottom Plug: Aluminium
Adjusting Screw: Steel
Valve: Brass
Elastomers: Synthetic rubber

V68H Series Materials

Intermediate Body & Bonnet: Aluminium
Bottom Plug: Aluminium
Adjusting Screw: Steel
Valve: Brass
Elastomers: Synthetic rubber

PGC: 170	Port Size (")	Operation	Price
V64H-NND-RMN	1/4 - 3/4	Relieving	£124.34
V68H-NND-RMN	3/4 - 1 1/2	Relieving	£244.15

* Air supply must be dry enough to avoid ice formation at temperatures below +2°C.

Soft Start/Dump Valves

Soft start valves allow a controlled increase of pressure onto downstream cylinder/machines offering protection to personnel and equipment. The dump feature can be activated by removing power to the solenoid, the pilot operator or by activating the optional manual shut-off.

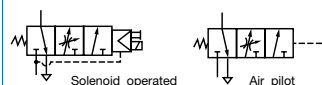
Assists machine designers in complying with the **EUROPEAN MACHINERY DIRECTIVE**

Can help existing machinery to comply with **PUWER** (Provision and Use of Work Equipment Regulations)

- Olympian® plug-in design
- Controlled increase of downstream pressure on start up
- Solenoid, air pilot or manual operator
- High forward flow and dump capacity
- Snap Pressure: Full flow when downstream pressure reaches 50% - 80% of inlet pressure

ⓘ This unit is to be used in conjunction with a ported yoke.

P64F Soft Start/Dump Valve



Operating Temperature*:
-20°C to +80°C

Maximum Pressure:
17 bar (246 psi)

Specifications

Medium: Compressed air

Gauge Ports: G 1/8

Air Pilot Port: G 1/4

Cv (forward): 4.2



Yoke not included

Supplied with 22 mm, 24 V DC, 2 W solenoids

P64F Series Materials

Body: Zinc alloy

Intermediate Body & Top Plate: Aluminium

Filter Discs: Sintered Plastic

Internal Components: Brass/steel

Elastomers: Synthetic

PGC: 170	Port Size (BSPP)	Flow (dm ³ /s)	Operating Pressure (bar)	Price
P64F-NNC-PFN	1/2 - 3/4	57	3 - 10	£380.23

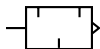
* Air supply must be dry enough to avoid ice formation at temperatures below +2°C.

Coalescing Exhaust Silencers

- Reduces noise from multi-valve and cylinder circuits
- Removes oil mist and sub-micron particles from exhausting air
- Flow in either direction
- Helps to meet the EU Noise at Work Directive (2003/10/EC)

Coalescing Exhaust Silencer

Exhaust Silencer

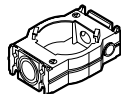


PGC: 170	BSPP	Price
CS13-264-10GG	1/4	£131.05
CS13-464-10GG	1/2	£131.05

Yokes

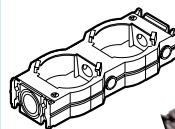
- When installed, enables Olympian® basic units to be 'plugged in' or removed without disturbing connecting pipework

Single Unit Yoke



PGC: 170	BSPP	Price
Y64A-2GA-N1N	1/4	£15.21
Y64A-3GA-N1N	3/8	£15.21
Y64A-4GA-N1N	1/2	£14.96
Y68A-6GN-N1N	3/4	£40.47
Y68A-8GN-N1N	1	£41.34

Double Unit Yoke



PGC: 170	BSPP	Price
Y64A-4GA-N2N	1/2	£21.14
Y68A-6GN-N2N	3/4	£83.65

3 Port 2 Position Shut Off Valves

- Easy to operate Olympian® plug-in design
- 3-port / 2-position shut-off valves
- Valves can be locked in open or closed position
- Use upstream or downstream of air processing units
- T68C ball valve design provides low pressure drop

3/2 Shut Off Valve

Operating Temperature*:
-20°C to +80°C

Maximum Pressure:
17 bar (246 psi)

Specifications

Medium: Compressed air

T64T Series Materials

Body: Zinc

Slide: Acetal plastic

Elastomers: Nitrile

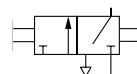
T68C Series Materials

Body: Aluminium

Handle: Zinc

Ball: Brass

Seals: Nitrile



PGC: 170	BSPP	Price
T64T-4GB-P1N	1/2	£47.12
T68C-6GB-B2N	3/4	£110.84



NORGREN

Stainless Steel Regulators & Filter/Regulators

03

General Purpose Regulators & Filter/Regulators

- Designed to filter and regulate compressed air in corrosive environments
- Metallic parts meet NACE† MR-01-75 recommendations
- Miniature high corrosion-resistant design
- Adjustable knob has snap-action lock
- Particularly suitable for marine, petrochemical, food processing, medical, dental and similar applications
- Panel mounting facility
- Allows reduction of outlet pressure even when the system is dead-ended
- Can be disassembled without the use of tools or removal from the air line

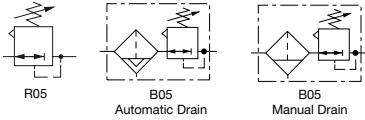
Precision Integral Regulators

- Designed to filter and regulate compressed air in corrosive environments
- Metallic parts meet NACE† MR-01-75 recommendations
- Lloyd's Register Type Approved
- Compact high corrosion-resistant design
- Adjustable knob has snap-action lock
- Suitable for marine, offshore, food processing and dental applications
- 1/4" model is for precision regulation and high flow rates

† National Association of Corrosion Engineers - recognised oil-field recommendation for resistance to sulphide stress cracking common in well-head and other corrosive environments

R05 & B05 General Purpose

Miniature Stainless Steel Regulator & Filter-Regulator Relieving



R05 Regulator



B05 Filter-Regulator



Operating Temperature*:
-20°C to +66°C (R05);
-34°C to +66°C (B05)

Maximum Inlet Pressure:
0 bar (0 psi) to 17 bar (246 psi)

Specifications

Medium: Compressed air only

R05 & B05 Series Materials

Gauge Ports: 1/8" NPTF (R05); 1/8" PTF (B05)

Body and Bowl: 316 stainless steel

Bonnet: Acetal with stainless steel adjusting screw

Outlet Pressure Adjustment Range: 0.3 bar to 8.5 bar

Valve: Stainless steel with fluorocarbon elastomer

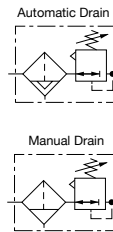
Element: Sintered polypropylene 5 µm

Elastomers: Fluorocarbon

PGC: 170	Port Size	Flow** (dm ³ /s)	Operation	Price
R05-200-RNLA	1/4 NPTF	3	—	£535.13
B05-233-A1LA	1/4 PTF	5	Automatic	£654.33
B05-233-M1LA	1/4 PTF	5	Manual	£540.12

B38 Precision Integral

Stainless Steel Regulator Relieving



Operating Temperature*:
-40°C to +80°C

Maximum Inlet Pressure:
Automatic Drain: 17 bar (246 psi);
Manual Drain: 31 bar (450 psi)

Specifications

Medium: Compressed air only

B38 Series Materials

Gauge Ports: 1/4" PTF

Bowl, Bonnet & Adjusting Screw: 316 stainless steel

Element: High density polyethylene 25 µm

Elastomers: Synthetic rubber

PGC: 170	Port Size (PTF)	Flow** (dm ³ /s)	Operation	Price
B38-244-A2MA	1/4	7	Automatic	£405.65
B38-444-A2LA	1/2	50	Automatic	£478.82
B38-244-B2MA	1/4	7	Manual	£313.81
B38-444-M2LA	1/2	50	Manual	£412.35

* Air supply must be dry enough to avoid ice formation at temperatures below +2°C.

** Typical flow at 6.3 bar (90 psi) inlet pressure and 0.35 bar (5 psi) pressure drop.



Ported Filters & Regulators

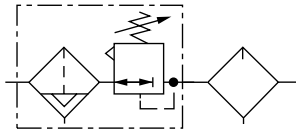
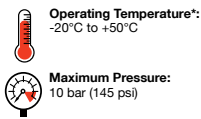
03

Filter-Regulator & Lubricator Combinations

- Compact design
- Filter removes liquids and solid particles down to 40 µm
- Push-to-lock adjusting knob with tamper resistant option
- Micro-fog lubricator provides air line lubrication to one or more air-driven tools or other devices
- Nearly constant oil density output with varying air flow
- Can be disassembled without the use of tools or removal from the air line
- Combinations of filter-regulators/filters and lubricators can be ordered as pre-assembled units
- Complete control of filtration, regulation and lubrication at a single point

P1H Combination Unit Filter/Regulator & Lubricator –

Miniature Series 07
BSPP Thread (ISO G)



Specifications

Medium: Compressed air only
Gauge Ports: 1/8" ISO Rc

P1H Series Materials

Body: Zinc alloy
Bowls: Polycarbonate
Element: Polypropylene
Elastomers: Nitrile

PGC: 170	Port Size (BSPP)	Filter Element (µm)	Outlet Pressure Adjustment Range (bar)	Bowl Type	Drain Type	Price
P1H-100-A3QG	1/8	40	0.3 - 7	Transparent	Automatic	£115.63
P1H-100-M3QG	1/8	40	0.3 - 7	Transparent	Manual	£105.66

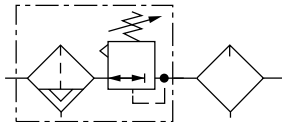
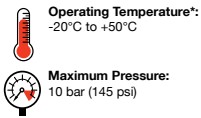
* Air supply must be dry enough to avoid ice formation at temperatures below +2°C.

** Typical flow with a 40 µm element at 6.3 bar (90 psi) inlet pressure and 0.35 bar (5 psi) pressure drop.

- Miniature FRL boxed sets offer rapid set up and installation
- Boxed sets are pre-assembled and ready to install
- Set consists of a filter/regulator, lubricator, shut-off valve, mounting bracket and pressure gauge
- Protects compressed air systems from over-pressurisation
- Lightweight and compact – ideal for lower flow, portable or single device applications
- Low-torque push-to-lock adjustment knob

BL07 Filter/Regulator-Lubricator – Miniature Series 07 Box Set

BSPP Thread (ISO G)



Specifications

Medium: Compressed air only

BL07 Series Materials

Body: Zinc alloy
Bowl: Polycarbonate
Element: Polypropylene
Elastomers: Nitrile

PGC: 170	Port Size (BSPP)	Filter Element (µm)	Typical Flow** (dm ³ /s)	Output Pressure Range (bar)	Bowl Type	Drain Type	Price
BL07-201	1/4	40	6.5	0.3 - 7	Transparent	Automatic	£65.34



Ported 'Puraire'® Oil Removal Filters

- High-efficiency coalescing oil-removal filters
- Compact design
- Screw-on bowl reduces maintenance time
- Can be disassembled without the use of tools or removal from the air line
- Air quality to ISO 8573-1: Class 1.7.2.
- Maximum remaining oil content 0.01 ppm, particle removal to 0.01 µm
- Automatic drains fitted as standard

F39 Ported 'Puraire'® Oil Removal Filter

BSPP Thread (ISO G)



Operating Temperature*: -20°C to +50°C



Maximum Pressure: 10 bar (145 psi)



Specifications

Medium: Compressed air only

Remaining Oil at +21°C: 0.01 ppm maximum

Particle Removal: 0.01 µm

P39 Series Materials

Body: Zinc alloy

Bowl: Polycarbonate

Element: Synthetic fibre and polypropylene foam

Elastomers: Neoprene® and nitrile

PGC: 170	Port Size (BSPP)	Bowl Type	Drain Type	Price
F39-100-A0TG	1/8	Transparent	Automatic	£82.85
F39-200-M0TG	1/4	Transparent	Manual	£72.67

* Air supply must be dry enough to avoid ice formation at temperatures below +2°C.

** Typical flow with a 40 µm element at 6.3 bar (90 psi) inlet pressure and 0.35 bar (5 psi) pressure drop.

- High-efficiency coalescing oil-removal filters
- Highly visible, prismatic liquid level indicator lens
- G 1 1/2 and G 2 models have mechanical storage indicator
- Can be disassembled without removal from the air line
- Automatic drains fitted as standard
- Maximum remaining oil content 0.01 ppm, particle removal to 0.01 µm
- Automatic drains fitted as standard
- Optional electrical service indicator also available
- Standard service indicator turns from green to red when the filter element needs to be replaced

F47 Ported 'Puraire'® Oil Removal Filter

BSPP Thread (ISO G)



Operating Temperature*: -20°C to +65°C



Maximum Pressure: 17 bar (246 psi)



Specifications

Medium: Compressed air only

Remaining Oil at +21°C: 0.01 ppm maximum

Particle Removal: 0.01 µm

F47 Series Materials

Intermediate Body & Bowl: Aluminium

Element: Synthetic fibre and polyurethane foam

Elastomers: Neoprene® and nitrile

PGC: 170	Port Size (BSPP)	Flow** (dm ³ /s)	Bowl Type	Drain Type	Price
F47-B01-A0DD	1 1/2	118	Metal	Automatic	£873.82
F47-C01-A0DD	2	156	Metal	Automatic	£780.72
F47-C21-A0DD	2	284	Metal (Long)	Automatic	£1677.11

Ported General Purpose Filters

- Compact design
- Directed ported filters with high water efficiency removal
- High flow with minimal pressure drop
- Automatic drains supplied as standard
- Protects air operated devices by removing liquid and solid contaminants
- Screw-on bowl reduces maintenance time
- Can be disassembled without the use of tools or removal from the air line

03

F07 Ported General Purpose Filter – Miniature Series 07

BSPF Thread (ISO G)



Operating Temperature*:
-20°C to +50°C



Maximum Pressure:
10 bar (145 psi)



Specifications

Medium: Compressed air only

F07 Series Materials

Body: Zinc alloy

Bowl: Polycarbonate

Element: Polypropylene

Elastomers: Neoprene® and nitrile

PGC: 170	Port Size (BSPF)	Filter Element (µm)	Flow** (dm ³ /s)	Drain Type	Price
F07-100-A3TG	1/8	40	9	Automatic	£35.77

* Air supply must be dry enough to avoid ice formation at temperatures below +2°C.

** Typical flow with a 40 µm element at 6.3 bar (90 psi) inlet pressure and 0.35 bar (5 psi) pressure drop.

- Effective liquid removal and positive solid filtration
- Ported design is excellent for single unit 'stand alone' applications
- Screw-on bowl reduces maintenance time
- Can be disassembled without removal from the air line
- Optional visual service indicator turns from green to red when the filter element needs to be cleaned or replaced
- Optional electrical service indicator also available

F17 & F18 Ported General Purpose Filter – 17 Series

BSPF Thread (ISO G)



Ambient Temperature*:
-20°C to +80°C



Maximum Pressure:
17 bar (246 psi)



Specifications

Medium: Compressed air only

F17 & F18 Series Materials

Body: Aluminium

Bowl: Aluminium

Element: Sintered plastic (F17); Sintered bronze (F18)

Elastomers: Neoprene® and nitrile

PGC: 170	Port Size (BSPF)	Filter Element (µm)	Flow** (dm ³ /s)	Drain Type	Price
F17-600-A3HD	3/4	40	183	Automatic	£283.41
F17-600-M3HD	3/4	40	183	Manual	£232.53
F17-800-A3HD	1	40	236	Automatic	£283.41
F17-800-M3HD	1	40	236	Manual	£232.53
F18-B00-A3DD	1 1/2	40	765	Automatic	£901.30
F18-C00-A3DD	2	40	765	Automatic	£901.30





Ported Filter Regulators

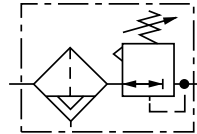
- For all general purpose pneumatic applications
- Compact design
- Low torque, non-rising adjusting knob
- Non-rising adjusting knob has snap-lock action
- Full flow gauge ports
- Screw-on bowl reduces maintenance time
- Standard relieving models allow reduction of outlet pressure even when the system is dead-ended
- Standard options include non-relieving models, metal bowls and alternative pressure ranges

B07 Ported Filter Regulator – Miniature Series 07

BSPB Thread (ISO G)

 **Operating Temperature*:**
-20°C to +65°C

 **Maximum Pressure:**
10 bar (145 psi)



Specifications

Medium: Compressed air only
Gauge Ports: Rc 1/8

B07 Series Materials

Body: Zinc
Bonnet: Acetal
Valve: Brass/nitrile
Valve Seat: Acetal
Transparent Bowl: Polycarbonate
Element: Sintered polypropylene
Elastomers: Nitrile

PGC: 170	Port Size (BSPB)	Filter Element (µm)	Operating Pressure (bar)	Flow** (dm ³ /s)	Bowl Type	Drain Type	Price
B07-101-A3KG	1/8	40	0.3 - 7	6.2	Transparent	Automatic	£55.46
B07-201-A3KG	1/4	40	0.3 - 7	6.5	Transparent	Automatic	£55.46


* Air supply must be dry enough to avoid ice formation at temperatures below +2°C.
** Typical flow with a 40 µm element at 6.3 bar (90 psi) inlet pressure and 0.35 bar (5 psi) pressure drop.

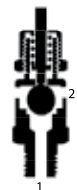
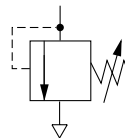
Ported Pressure Relief Valves

- Protect compressed air systems from over-pressurisation
- Simple, low-cost units
- 'POP' type operation
- Suitable for direct connection to pressure vessels and associated components
- Pre-set and tamper resistant relief valves protected from ingress
- Plunger rod for testing valve (1002 models only)
- Alternative models include:
Pre-set relief pressure
Ring-pull (1002 only)

'POP' Type Ported Pressure Relief Valve

R 1/4 Connection

 **Ambient Temperature:**
-40°C to +230°C



Specifications

Medium: Compressed air only

1000 & 1002 Series Materials

Body & Adjusting Cap: Brass
Ball Seat: Stainless steel

PGC: 170	Operating Pressure (bar)	Price
1000/BM000	0 - 1.6	£60.02
1002/BP000	1.6 - 2.5	£60.02
1002/BR000	6.3 - 14	£60.02

Ported Pressure Regulators

- Ported Regulators for general pneumatic applications
- Compact design for optimum performance — minimum space
- Incorporates a low torque push-to-lock adjustment knob
- Relieving operation as standard

- Standard relieving models allow reduction of outlet pressure even when the system is dead-ended
- Panel or bracket mounted
- Can be disassembled without the use of tools or removal from the air line

03

R07 Ported Pressure Regulator — Miniature Series 07

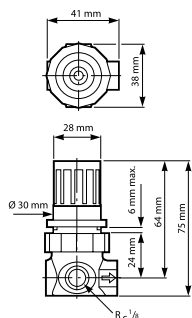
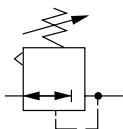
BSPB Thread (ISO G)



Ambient Temperature*:
-34°C to +65°C



Maximum Inlet Pressure:
20 bar (290 psi)



Panel mounting hole diameter 30mm
Maximum panel thickness 6mm



Specifications

Medium: Compressed air only

Gauge Ports: Rc 1/8

B07 Series Materials

Body: Zinc

Bonnet: Acetal

Valve: Brass/nitrile

Valve Seat: Acetal

Elastomers: Nitrile

PGC: 170	Port Size (BSPB)	Flow** (dm ³ /s)	Operating Pressure (bar)	Operation	Price
R07-100-RNKG	1/8	7.5	0.3 - 7	Relieving	£23.32
R07-200-RNKG	1/4	7	0.3 - 7	Relieving	£23.32

* Air supply must be dry enough to avoid ice formation at temperatures below +2°C.

** Typical flow with a 40 µm element at 6.3 bar (90 psi) inlet pressure and 0.35 bar (5 psi) pressure drop.

- Designed for systems that require high flow or pressure regulation at an inaccessible location
- Can be installed at any point in the compressed air system without regard to accessibility — pilot regulator can be installed in the most convenient location
- Accurate pressure regulation over a wide range of flows
- Exceptionally high relief flow

- Relieving operation as standard
- Feedback pilot regulator senses downstream pressure and automatically adjusts pilot operated regulator outlet pressure
- Can be used with conventional or feedback pilot regulators

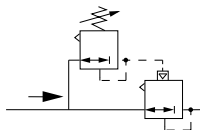


Warning - Feedback Pilot Regulators

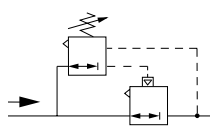
The feedback line must sense the pilot operated regulator outlet pressure and must be connected before turning on the air supply. If it is not connected, the pilot operated regulator outlet pressure will rapidly increase to the inlet pressure when the adjusting knob on the pilot operator is turned clockwise.

R18 Ported Pilot Operated Pressure Regulator — 18 Series

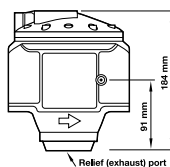
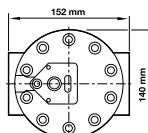
BSPB Thread (ISO G)



R18 with Conventional Pilot Regulator



R18 with Feedback Pilot Regulator



Ambient Temperature*:
-20°C to +80°C



Maximum Inlet Pressure:
31 bar (450 psi)

Specifications

Medium: Compressed air only

Gauge Ports: G 1/4

Exhaust Port: G 3/4

R18 Series Materials

Body, Bonnet, Bottom Plug & Valve: Aluminium alloy

Elastomers: Nitrile

PGC: 170	Port Size (BSPB)	Flow** (dm ³ /s)	Operation	Price
R18-B00-RNXD	1 1/2	1000	Relieving	£844.66
R18-C00-RNXD	2	1000	Relieving	£869.16



- Can be installed at any point in the compressed air system without regard to accessibility — pilot regulator can be installed in the most convenient location
- Accurate pressure regulation over a wide range of flows
- Can be used with conventional or feedback pilot regulator

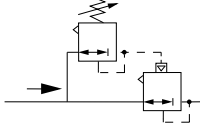
- Feedback pilot regulator senses downstream pressure and automatically adjusts pilot operated regulator outlet pressure
- Regulator and pilots are constant bleed for fast response
- Relieving units

**Warning - Feedback Pilot Regulators**

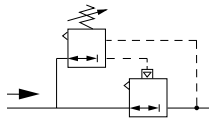
The feedback line must sense the pilot operated regulator outlet pressure and must be connected before turning on the air supply. If it is not connected, the pilot operated regulator outlet pressure will rapidly increase to the inlet pressure when the adjusting knob on the pilot operator is turned clockwise.

11-808 & 11-204 Ported Pilot Operated Pressure Regulator

BSPP Thread (ISO G)



R18 with Conventional Pilot Regulator



R18 with Feedback Pilot Regulator



Ambient Temperature*:
-20°C to +80°C



Maximum Inlet Pressure:
20 bar (290 psi)

Specifications

Medium: Compressed air only

Gauge Ports: Rc 1/8

11-808 Series Materials

Body: Zinc alloy

Bonnet: Aluminium alloy

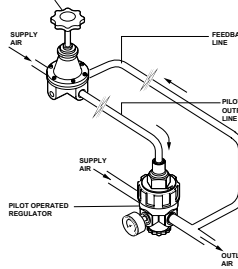
Elastomers: Nitrile

11-204 Series Materials

Body: Zinc alloy

Bonnet: Zinc alloy

Elastomers: Synthetic rubber

11-808 Feedback Pilot & Pilot Operated Regulator

PGC: 170	Port Size (BSPP)	Flow** (dm ³ /s)	Operation	Price
11-808-960	3/4	180	Relieving	£291.17
11-204-004	1/4	N/A	Relieving	£166.10
11-204-006	1/4	N/A	Relieving	£166.10
11-808-980	1	180	Relieving	£325.24

* Air supply must be dry enough to avoid ice formation at temperatures below +2°C.

** Typical flow with a 40 µm element at 6.3 bar (90 psi) inlet pressure and 0.35 bar (5 psi) pressure drop.

The 20AG Series of pressure regulators are designed for general application in compressed air service where reliable, accurate pressure regulation and large flow capacity is required. Gauge port is not full flow and cannot be used as an outlet port.

- Floating valve pin for more positive seating and greater dependability
- Large effective diaphragm area for more stable regulated pressure over a wide range of conditions
- Balanced valve construction for accurate and rapid response to flow demand and line pressure changes
- Baffle and syphon tube construction for increased sensitivity and better performance
- Easy disassembling for service without removal from the air line
- Relieving type to automatically prevent excessive pressure build-up

20AG Ported Pressure Regulator

BSPP Thread (ISO G)



Ambient Temperature*:
-20°C to +80°C



Maximum Inlet Pressure:
28 bar (406 psi)

Specifications

Medium: Compressed air only

Gauge Ports: G 1/8

20AG Series Materials

Body & Bonnet: Zinc alloy

Bottom Plug: Brass

Adjusting Screw: Steel plated

Elastomers: Synthetic rubber



PGC: 170	Port Size (BSPP)	Flow** (dm ³ /s)	Operating Pressure (bar)	Operation	Price
20AG-X4G/PH100	1/2	60	0.2 - 8	Relieving	£169.14
20AG-X4G/PJ100	1/2	60	7 - 16	Relieving	£169.14
20AG-X8G/PH100	1	100	0.2 - 8	Relieving	£362.32

Drip Leg Drains

- Fully automatic operation — drains liquid from low points in compressed air systems
- Vent valve allows pressure to be vented prior to carrying out routine maintenance
- Collected liquids can be piped away
- Polycarbonate bowl to BS 6005 as standard

ⓘ It is recommended that a ball type Shut-Off Valve be fitted prior to a Drip Leg Drain Unit to facilitate on-site servicing.

17-816 Drip Leg Drain

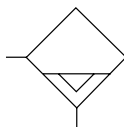
BSPP Thread (ISO G)



Operating Temperature*:
-20°C to +50°C



Maximum Pressure:
Transparent Bowl: 10 bar (145 psi);
Metal Bowl: 16 bar (232 psi)



Specifications

Medium: Compressed air only

17-816 Series Materials

Body: Zinc alloy

Transparent Bowl: Polycarbonate

Metal Bowl: Zinc alloy

Elastomers: Synthetic rubber

PGC: 170	Port Size (BSPP)	Bowl Type	Price
17-816-999	1/2	Transparent	£89.81
17-816-998	1/2	Metal	£100.24

* Air supply must be dry enough to avoid ice formation at temperatures below +2°C.

** Typical flow with a 40 µm element at 6.3 bar (90 psi) inlet pressure and 0.35 bar (5 psi) pressure drop.

Ported Lubricators

- Compact design
- Generate fine mist for multi-valve circuits giving the best even lubrication
- Constant oil density for changing flow conditions

L07 Ported Lubricator — Miniature Series 07

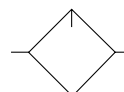
BSPP Thread (ISO G)



Operating Temperature*:
-20°C to +50°C



Maximum Inlet Pressure:
10 bar (145 psi)



Specifications

Medium: Compressed air only

L07 Series Materials

Body: Zinc alloy

Bowl: Polycarbonate

Sight Dome: Transparent nylon

Elastomers: Neoprene® and nitrile

PGC: 170	Port Size (BSPP)	Flow** (dm ³ /s)	Start Point (dm ³ /s)	Price
L07-100-MPQG	1/8	5	0.24	£39.97
L07-200-MPQG	1/4	5	0.24	£39.35



Miniature Pre-Set Regulators

- Neat and compact
- Regulator pressure set and sealed at factory — tamper resistant

- Particularly suitable for use as a safety regulator in conjunction with low-guns
- For different pre-set models please consult with our Sales Team

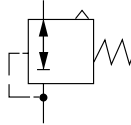
ⓘ The selected pressure is pre-set at the factory and the unit permanently sealed. The regulators are non-repairable items.

R16 Miniature Pre-Set Regulator

BSPP Thread (ISO G)

Operating Temperature*:
-20°C to +50°C

Maximum Inlet Pressure:
28 bar (406 psi)



Specifications

Medium: Compressed air only

Gauge Ports: Rc 1/8

Pre-Set Pressure Range: 0.5 bar to 6.3 bar†

Typical Setting Accuracy of Regulator with 7 bar Inlet Pressure & Zero Flow:
2 bar (+0.07 bar, -0.2 bar)



R16 Series Materials

Body: Zinc alloy

Bonnet: Aluminium alloy

Elastomers: Synthetic rubber

PGC: 170	Port Size (BSPP)	Pre-Set Operating Pressure (bar)	Operation	Price
R16-200-R30D	1/4	2	Relieving	£30.36

† Please specify pre-set regulated pressure required when ordering. Units are pre-set with 7 bar inlet pressure unless otherwise specified.

* Air supply must be dry enough to avoid ice formation at temperatures below +2°C.

Potable Water Regulators

- United Kingdom Water Byelaws Scheme Approved Product, Reference 8911040
- Suitable for use on potable and general duty water systems
- High flow, low pressure drop units
- Panel mounting facility
- Brass body — corrosion-resistant construction
- Can be disassembled without the use of tools or removal from the air or water line

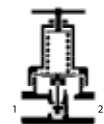
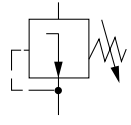
- Balanced valve design ensures smooth quick response to sudden flow demands
- Full flow gauge ports can be used as auxiliary outlets
- T-bar adjustment standard, non-rising knob adjustment optional
- Port Sizes: G1/4, G3/8, G1/2 to ISO 1179. Accepts ISO 228 (BS 2779) parallel or ISO 7 (BS 21) taper connectors

R43 Potable Water Pressure Regulator

BSPP Thread (ISO G)

Operating Temperature:
+2°C to +100°C

Maximum Inlet Pressure:
31.5 bar (456 psi)



Specifications

Medium: Water and compressed air

Gauge Ports: G 1/8

R43 Series Materials

Body: Brass

Bonnet: Zinc alloy

Adjusting Screw: Steel

Elastomers: Synthetic rubber

PGC: 170	Port Size (BSPP)	Operating Pressure (bar)	Operation	Price
R43-201-NNLD	1/4	0.7 - 8	Non-Relieving	£149.75
R43-401-NNLD	1/2	0.3 - 8	Non-Relieving	£190.74

Ported Pressure Relief Valves

- Compact design
- Low torque, non-rising adjusting knob
- Helps protect compressed air systems from excessive air pressure build up by venting air when pressure exceeds setting of the relief valve
- Snap action knob locks pressure setting when pushed in
- Can be factory preset
- Can be disassembled without the use of tools or removal from the airline

03

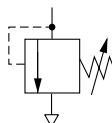
V07 Ported Pressure Relief Valve (Diaphragm Type) – Miniature Series 07 BSPP Thread (ISO G)



Operating Temperature*:
-20°C to +50°C



Maximum Inlet Pressure:
Transparent Bowl: 10 bar (145 psi)



Specifications

Medium: Compressed air only

Operating Temperature*: -34°C to +65°C

17-816 Series Materials

Body: Zinc alloy

Bonnet: Acetal

Elastomers: Synthetic rubber

PGC: 170	Port Size (BSPP)	Operating Pressure (bar)	Price
V07-200-NNLG	1/4	0.3 - 9	£30.32

* Air supply must be dry enough to avoid ice formation at temperatures below +2°C.

** Typical flow with a 40 µm element at 6.3 bar (90 psi) inlet pressure and 0.35 bar (5 psi) pressure drop.

Ported Precision Pressure Regulators

- Precision instruments with integral pilot to ensure very close pressure control in a compact form
- Integral relief valve automatically vents excess outlet pressure build-up
- Unit double filters air before reaching pilot valve to help prevent leakage and malfunction
- Panel mounting facility



Not recommended for dead end use
Please contact our Sales Team for details.

11-818 Ported Precision Pressure Regulator

BSPP Thread (ISO G)

Specifications

Medium: Dry, oil-free compressed air only

Gauge Ports: G 1/8

Maximum Inlet Pressure:

0-8 bar (0-116 psi) (11-818-999)

0-10 bar (0-145 psi) (11-818-100)

0-14 bar (0-203 psi) (11-818-110)

Recommended Regulated Pressure ††:

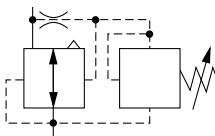
0.02-0.5 bar (0.29-7.25 psi) low pressure unit

0.07-4 bar (10.15-58 psi) standard unit

0.4-10 bar (5.8-145 psi) high pressure unit

Ambient Temperature*: 0°C to +70°C

Adjustment Method: Handwheel



11-818 Series Materials

Body & Bonnet: Zinc alloy

Adjusting Knob: Acetal resin

Elastomers: Nitrile

PGC: 170	Port Size (BSPP)	Accuracy (bar)	Operating Pressure (bar)	Price
11-818-999	1/4	0.01	0.02 - 0.5	£116.59
11-818-100	1/4	0.03	0.07 - 4	£104.29
11-818-110	1/4	0.05	0.4 - 10	£116.59

Air Treatment

- The PCL Air Treatment series is a range of FRLs, including combination units with 1/4" and 1/2" inlet ports
- Products feature polycarbonate bowls with protective metal surrounds, and 1/2" units have a maximum inlet pressure of 16 bar (232 psi)
- All filters are manual/semi-automatic drains, and units are supplied complete with wall brackets and pressure gauges

Filter-Regulator and Lubricator



- Manual/semi automatic drain
- 10 µm filter
- Locking device
- Complete with wall bracket and pressure gauge

PGC: 158	Port Size (BSPP)	Adjustment (bar)	Maximum Inlet Pressure (bar)	Flow @ 6 bar (l/min)	Price
ATCFRL6	1/4	0 - 12	12	1800	£76.96
ATCFRL12	1/2	0 - 16	16	5000	£105.29

Regulator



- Locking device
- Complete with wall bracket and pressure gauge

PGC: 170	Port Size (BSPP)	Adjustment (bar)	Maximum Inlet Pressure (bar)	Flow @ 6 bar (l/min)	Price
ATR6	1/4	0 - 12	12	1700	£26.31
ATR12	1/2	0 - 16	16	6000	£40.93

Filter-Regulator



- Manual/semi automatic drain
- 10 µm filter
- Locking device
- Complete with wall bracket and pressure gauge

PGC: 170	Port Size (BSPP)	Adjustment (bar)	Maximum Inlet Pressure (bar)	Flow @ 6 bar (l/min)	Price
ATC6	1/4	0 - 12	12	1800	£43.90
ATC12	1/2	0 - 16	16	5000	£62.41

Filter



- Manual/semi automatic drain
- 10 µm filter
- Complete with wall bracket

PGC: 170	Port Size (BSPP)	Adjustment (bar)	Maximum Inlet Pressure (bar)	Flow @ 6 bar (l/min)	Price
ATF6	1/4	—	12	2100	£32.13
ATF12	1/2	—	16	6000	£44.82

Lubricator



- Complete with wall bracket

PGC: 170	Port Size (BSPP)	Adjustment (bar)	Maximum Inlet Pressure (bar)	Flow @ 6 bar (l/min)	Price
ATL6	1/4	—	12	2200	£33.15
ATL12	1/2	—	16	6000	£44.82

Pneumatic Audible Alarm Horns

- Thermoplastic or die-cast aluminium alloy trumpet
- Vibrating brass diaphragm
- Supplied with fittings for use with 1/4" or 6 mm OD plastic, nylon or metal tubing
- For operation above 1.5 bar a restrictor must be inserted into the fitting
- Designed and manufactured in accordance with BS EN ISO 9001:2000



The sound output of the air horns is high so care should be taken to prevent possible aural damage of operators and other personnel.

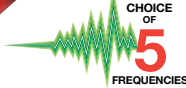
Air Horn – Series 842



Temperature Range:
-20°C to +70°C



Working Pressure:
0.5 bar (7 psi) to 15 bar (218 bar)
(1.5 bar (22 psi) to 10 bar (145 psi) with restrictor)



118 dB(A) OUTPUT

Specifications

Output: 118 dB(A) at 1 metre

Consumption: 15 NI/min to 30 NI/min @ 0.5 bar (7 psi) to 1.5 bar (22 psi)

Mounting:

- M6 x 12 stud fitted with nut and washer (842-1 to 842-2)
- M8 x 12 stud fitted with nut and washer (842-5)

Materials

Trumpet:

- ABS plastic (842-1 to 842-4)
- Die-cast aluminium alloy (842-5)

Paint Finish:

- N/A (842-1 to 842-4)
- Epoxy-hardened stoved enamel (842-5)

Diaphragm:

Brass

Rear Cover:

Polyethylene

Pneumatic Connection:

Brass

PGC: 301	Frequency (Hz)	Length (mm)	Diameter (mm)	Price
842-1-IC	784	160	80	£86.24
842-2-IC	622	210	80	£89.21
842-3-IC	533	280	80	£119.63
842-4-IC	440	310	80	£140.35
842-5-IC	392	335	90	£150.08

Restrictors



A restrictor should be fitted in the supply of each horn to ensure that in the event of one horn being damaged the supply pressure to the other(s) will not be affected.

Restrictor



PGC: 301	Size (mm)	Operating Pressure (bar)	Price
2096-0266	2	1.5-4	£10.23
2096-0274	1	4-10	£10.23

High Visibility Pneumatic Alarm Indicators

- Pneumatically operated flag with full 360° visibility moving in aluminium and acrylic housing
- Normally the flag becomes visible on removal of the pneumatic signal. However, by changing the mask within the acrylic housing this can be reversed to make the flag visible on application of the pneumatic signal

Indicator

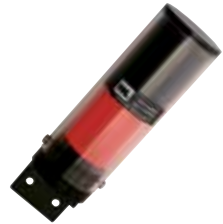
BSPT Connection



Temperature Range:
-10°C to +70°C



Working Pressure:
1.4 bar (20 psi) to 105 bar (1522 psi)



Specifications

Size: 200 mm high x 56 mm diameter

Mounting: 2 off 6 mm diameter holes on 28 centres

Flag: 50 mm x 40 mm diameter with full 360° visibility

Materials

Housing: Anodised aluminium/acrylic

Seals: Nitrile

PGC: 301	BSPT	Length (mm)	Diameter (mm)	Price
847-10	1/8	200	56	£311.54

Precision Pneumatic Flow Regulators

- For use with dip tube level measurement and purging applications
- Maintains constant flow rate independent of inlet and outlet pressures
- Flow rate is adjustable using the integral needle valve
- Available with variable area flow rate or without flow indication
- Designed and manufactured in accordance with BS EN ISO 9001:2000

Flow Regulator – Series 1713-15,

1721 & 1735

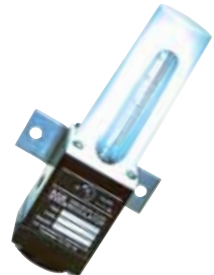
NPT Connection



Temperature Range:
-20°C to +80°C



Working Pressure:
8 bar (116 psi) (1713-15 & 1721);
16 bar (231 psi) (1735)



Specifications

Flow Indication:

- Variable area flow (1713-15)
- Bubbler (1721)
- None (1735)

Materials

Blocks: Anodised aluminium

Diaphragm: Nitrile

Seals: Nitrile and Viton®

Internals: Anodised aluminium and stainless steel

PGC: 301	NPT	Flow Rate (N/hr)	Size (mm)	Price
1713-1103	1/8	1-30	50 x 181	£368.37
1714-1103	1/8	10-100	50 x 181	£368.37
1715-1103	1/8	30-300	50 x 181	£368.37
1721-1103	1/8	0.5-3	50 x 181	£284.84
1717-1103	1/8	0.5-300	50 x 84	£284.84